

**APPENDIX A– CITY OF CHICAGO SPECIAL GUIDELINES
Standard Construction Details**

Table of Contents

Description	SHEET
Section 1: Typical Right of Way	
1) Standard Street Section	A-1-1
2) Standard Alley Section	A-1-2
3) Intersection Crosswalk Layout	A-1-3
Section 2: Pavement Details	
1) Street Cuts and Asphalt Restoration Requirement	A-2-1A thru A-2-1D
2) Street Pavement Restoration detail	A-2-2A thru A-2-2C
3) Typical Joint Layout for P. C. Concrete Pavements	A-2-3A thru A-2-3C
4) Pavement Widening Adjacent to New Construction	A-2-4
5) Street Widening for diagonal Parking	A-2-5
6) P. C. Concrete Curb and Gutter	A-2-6
7) Driveway Construction Detail (See Appendix B. ADA Standards)	A-2-7
8) Alley Pavement Restoration	A-2-8
9) P.C.C. Alley Pavement Restoration, Pipe or Conduit Trench Detail, Concrete Alley	A-2-9
10) Alley pavement Restoration, Pipe or Conduit Trench Detail, Asphalt Alley	A-2-10
11) Portland Cement Concrete Alley	A-2-11
12) Detail of Structure Casting Isolation Box	A-2-12A and A-12-12B
13) Chicago Standard Cast Iron Manhole Frame and Lid	A-2-13
14) Catch Basin Adjustment in Existing Pavement	A-2-14
15) Frame Adjustment in Pavement	A-2-15
Section 3: Sidewalk Details	
1) ADA Compliant Sidewalk Construction Details (See Appendix B, ADA Standards)	A-3-1
2) P. C. Concrete Sidewalk Joint Details	A-3-2
3) Elimination of Vaulted Sidewalk Adjacent to Building	A-3-3 and A-3-3A
Section 4: Department of Water Management Details	
1) Catch Basin, Type A, 4' Diameter	A-4-1
2) Special Provision for Inlet Control System	A-4-2
3) Type 'A' Manhole for Sewers 21" and Smaller	A-4-3
4) Type 'B' Manhole	A-4-4
5) Type 'B' Manhole for Sewers 24" and Smaller	A-4-5
6) Drop Manhole Type C	A-4-6
7) Detail of Storm Sewer Connections to Sewer	A-4-7

Table of Content

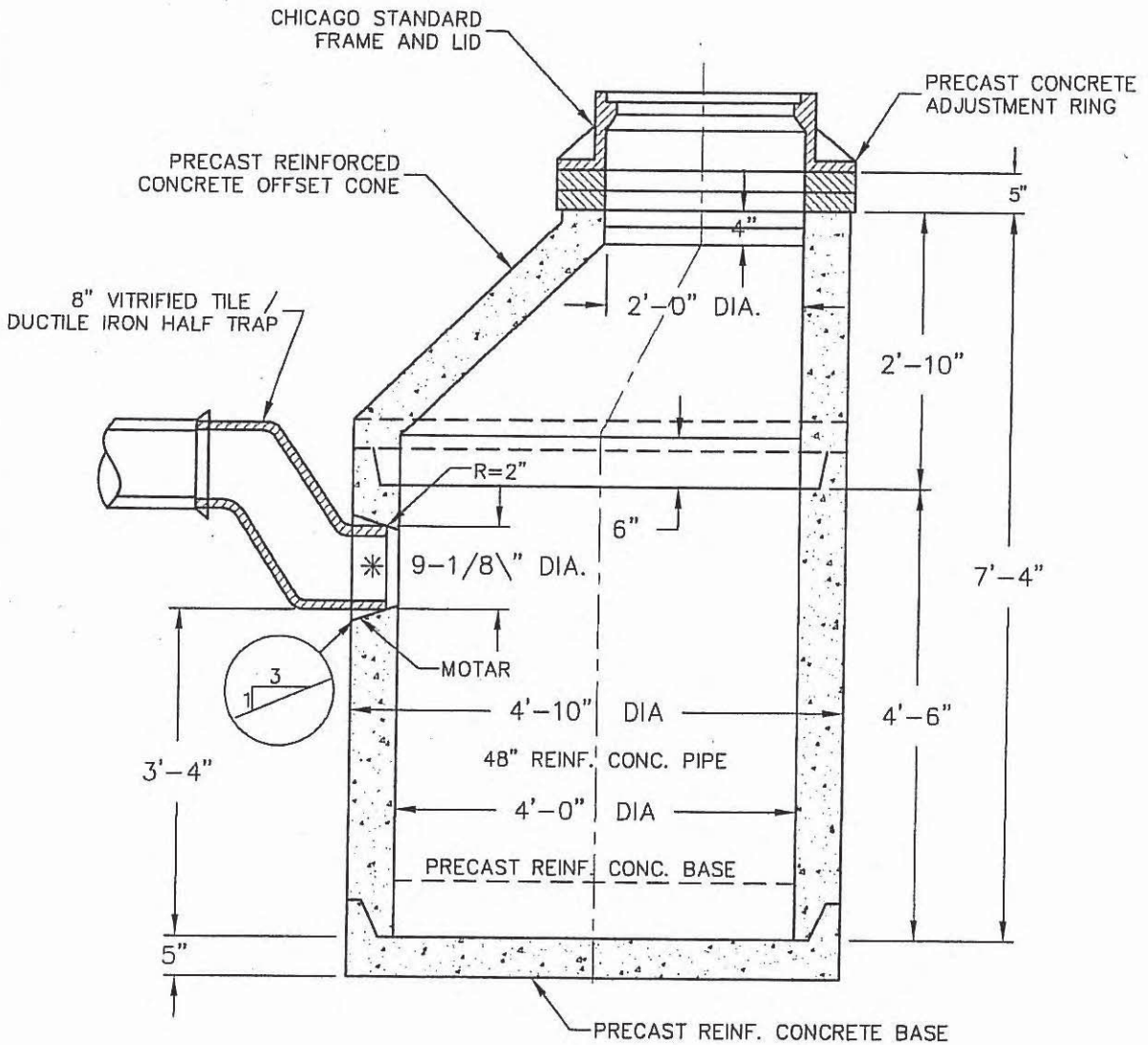
Description	SHEET
Section 5: Miscellaneous Details	
1) Tree Planting Detail in Parkway	A-5-1
2) Tree Planting Detail in Sidewalk (Tree Pit Detail)	A-5-2 and A-5-2A
3) Trenching Guideline Adjacent to Trees	A-5-3
4) Bus Shelter	A-5-4A thru A-5-4D
Section 6: Traffic Control Detail	
1) Area in traffic Control Zone	A-6-1
2) Lane Closure, 2L, 2W, Short Time Operations	A-6-2
3) Lane Closure, 2L, 2W Moving Operations – Day Only	A-6-3
4) Urban Lane Closure, 2L, 2W, Undivided	A-6-4
5) Urban Lane Closure, 2L, 2W, with Bidirectional Left Turn Lane	A-6-5A and A-5-5B
6) Urban Lane Closure, 1W or 2W with non-traversable Median	A-6-6A and A-6-6B
7) Urban Lane Closure, Multilane, 2W, with Bidirectional Left Turn Lane	A-6-7A thru A-6-7D
8) Urban Lane Closure, Multilane, 2W with Mountable Median	A-6-8A and A-6-8B
9) Urban Lane Closure, Multilane, Intersection	A-6-9
10) Traffic Control Devices	A-6-10A thru A-6-10C
11) Crosswalk and Sidewalk Closure	A-6-11
Section 7: Pavement Markings	
12) Crosswalk Marking Details	A-7-1
13) 6' Bike Symbol	A-7-2
14) 8' Bike Symbol	A-7-3
15) Bike Arrow	A-7-4
16) Bike Turn Arrow	A-7-5
17) Bike Chevron	A-7-6

Section 4

DWM Details

DEPARTMENT OF WATER MANAGEMENT DETAILS

CATCH BASIN, TYPE A, 4' DIAMETER



NOTE:

HALF-TRAP SHALL BE ENCLOSED WITH 6" CONCRETE SLEEVE AS DIRECTED BY THE COMMISSIONER.

*PLASTIC RESTRUCTURE OF THE SIZE AND TYPE APPROVED BY DEPARTMENT OF WATER MANAGEMENT.

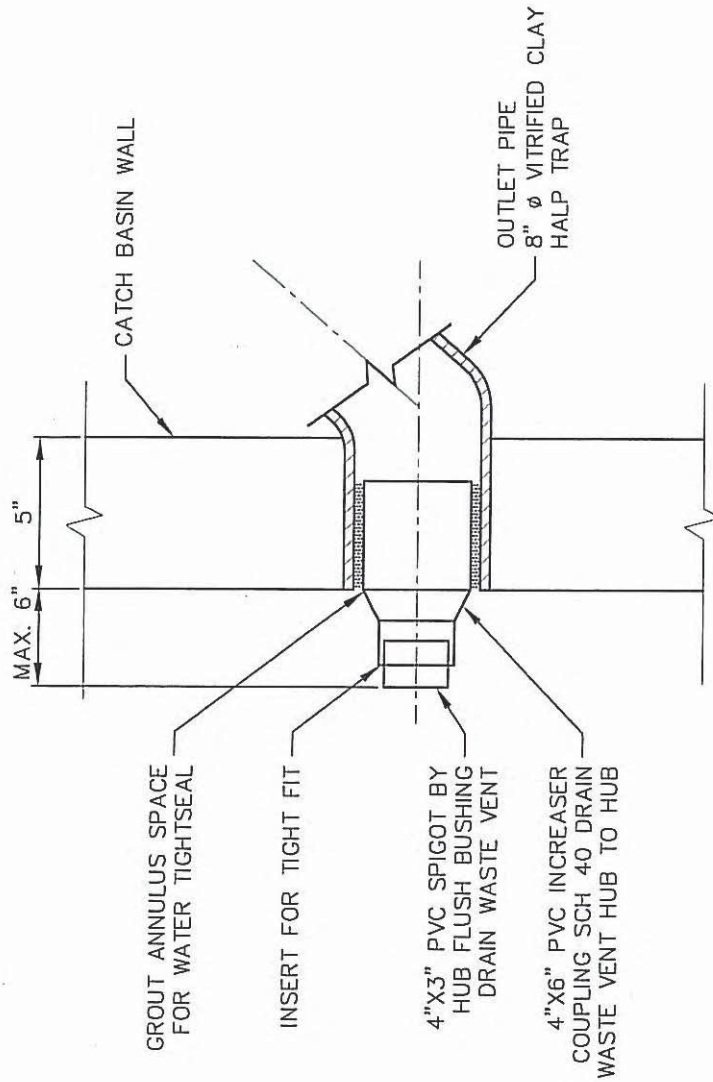
FURNISHING AND INSTALLING THE HALF TRAP AND SAND BACKFILL SHALL BE THE INSTALLER'S RESPONSIBILITY.

**RESTRICTORS ARE NOT REQUIRED ON ARTERIAL STREETS (DEPT. OF WATER MANAGEMENT).



DATE	REVISION	CITY OF CHICAGO		
—	—	CATCH BASIN, TYPE A, 4' DIAMETER		
		DATE	SHEET	DRAWN BY
		12/28/06	A-4-1	CDOT

SPECIAL PROVISIONS FOR INLET CONTROL SYSTEM

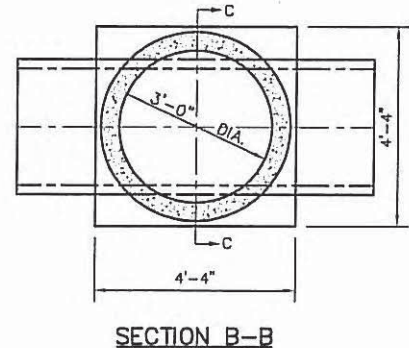
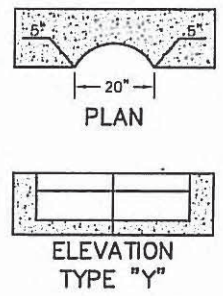
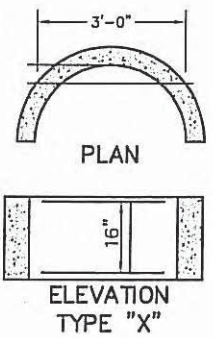
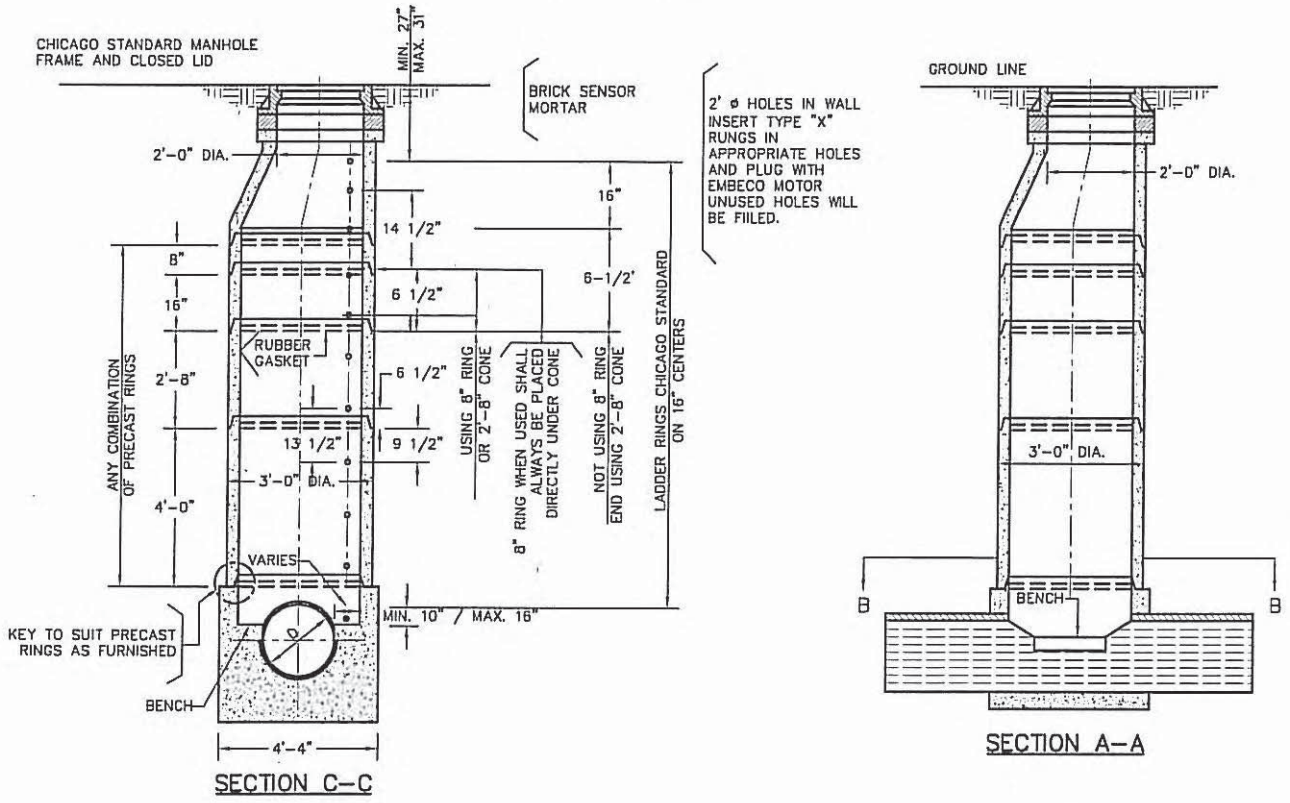


*PLASTIC RESTRICTOR OF THE SIZE AND TYPE APPROVED BY DEPARTMENT OF WATER MANAGEMENT.
 **RESTRICTORS ARE NOT REQUIRED ON ARTERIAL STREETS (DEPT. OF WATER MANAGEMENT).



DATE	REVISION	CITY OF CHICAGO		
-	-	SPECIAL PROVISIONS FOR INLET CONTROL SYSTEM		
		DATE	SHEET	DRAWN BY
		12/28/06	A-4-2	CDOT

TYPE 'A' MANHOLE FOR SEWERS 21" AND SMALLER



NOTE: FIRST LADDER RUNGS SHOULD BE MAXIMUM OF 31 INCHES DOWN FROM TOP OF MANHOLE FRAME.

ALL LADDER RUNGS SHALL BE ALUMINUM, GALVANIZED WROUGHT IRON OR DUCTILE IRON, 1 INCH DIAMETER.

ALUMINUM LADDER RUNGS SHALL BE COATED WITH ASPHALT PAINT APPLIED BY DIPPING OR BRUSHING ON THE PORTION OF THE RUNGS TO BE IMBEDDED IN CONCRETE. THE COATING SHALL EXTEND BEYOND THE EMBEDMENT AT LEAST TWO INCHES.

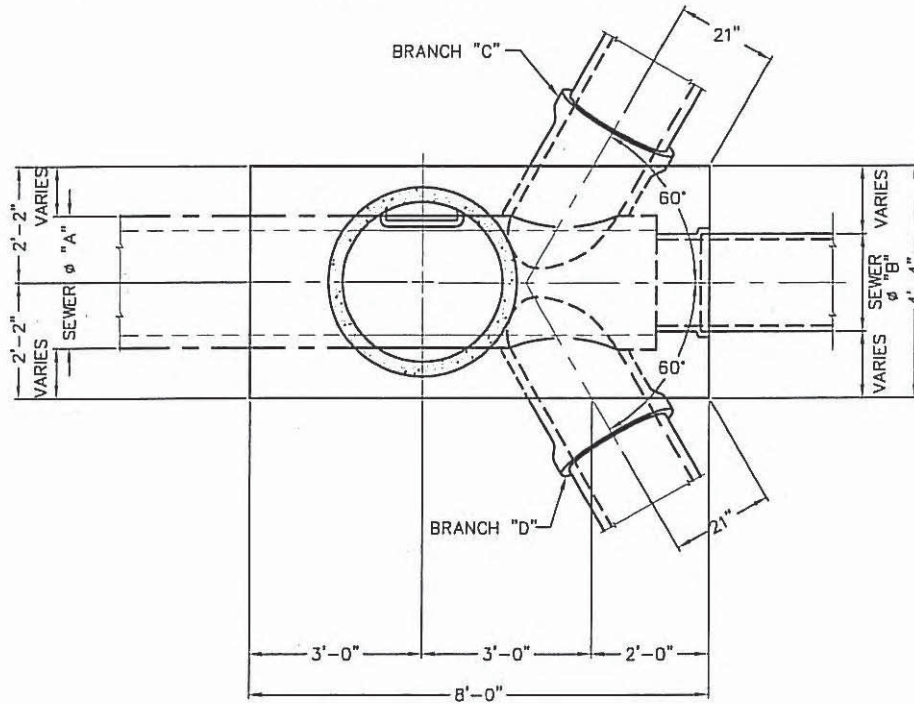
FURNISHING AND INSTALLING TYPE X & TYPE Y LADDER RUNGS SHALL BE INCLUDED IN THE CONTRACT UNIT PRICE FOR MANHOLES.

LADDER RUNGS

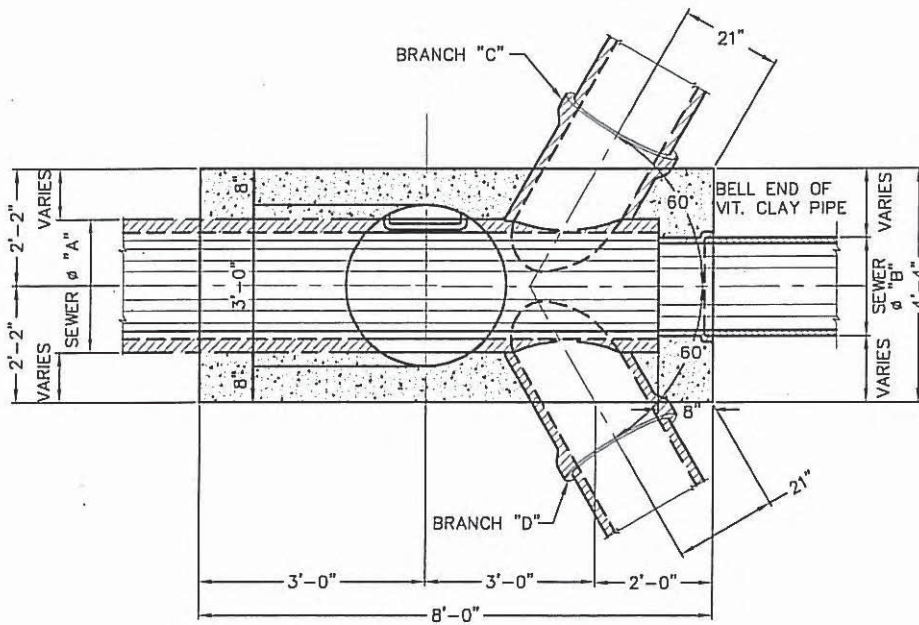
NOTE:
FURNISHING AND INSTALLING FRAMES AND LIDS SHALL BE INCLUDED IN THE CONTRACT UNIT PRICE FOR MANHOLES

	DATE	REVISION	CITY OF CHICAGO		
	—	—	TYPE 'A' MANHOLE FOR SEWERS 21" AND SMALLER		
			DATE	SHEET	DRAWN BY
			12/28/06	A-4-3	CDOT

TYPE "B" MANHOLE - PLAN

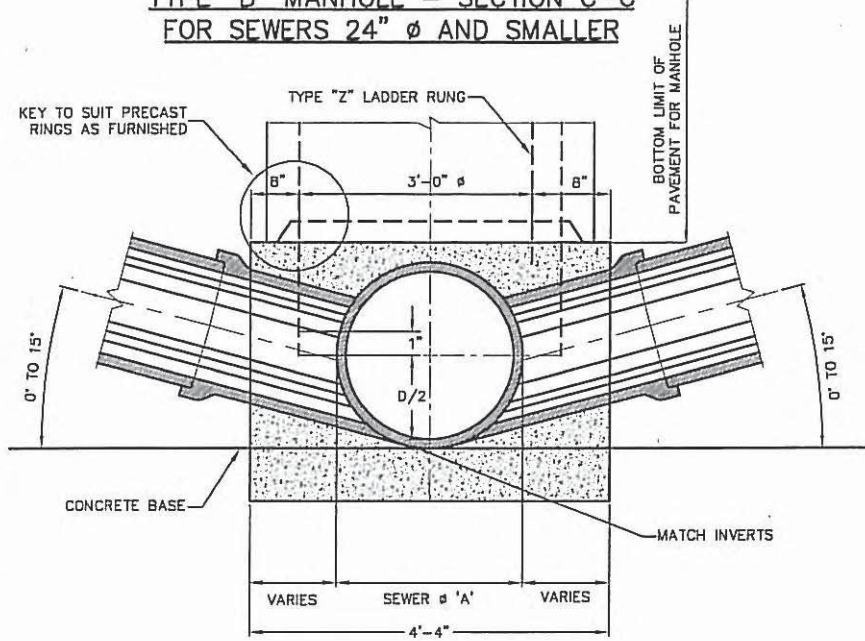


TYPE "B" MANHOLE - SECTIONAL PLAN

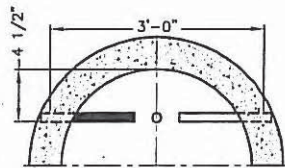


	DATE	REVISION	CITY OF CHICAGO		
	—	—	TYPE 'B' MANHOLE		
			DATE	SHEET	DRAWN BY
			12/29/06	A-4-4	CDOT

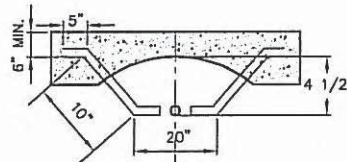
**TYPE "B" MANHOLE – SECTION C-C
FOR SEWERS 24" Ø AND SMALLER**



STANDARD LADDER RUNGS



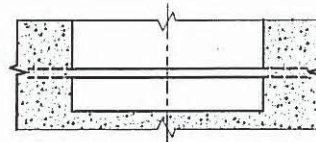
PLAN



PLAN

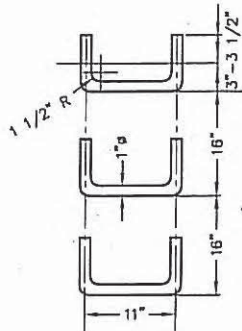


ELEVATION
TYPE "X"

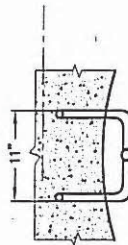


ELEVATION
TYPE "Y"

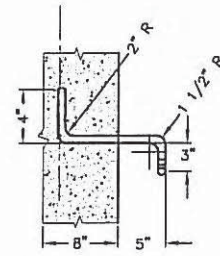
HAND HOLD TYPE "Z" RUNGS



SPACING



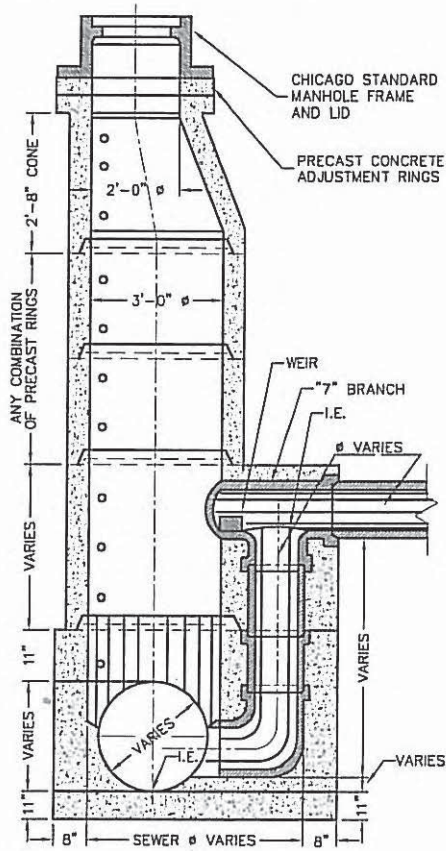
PLAN



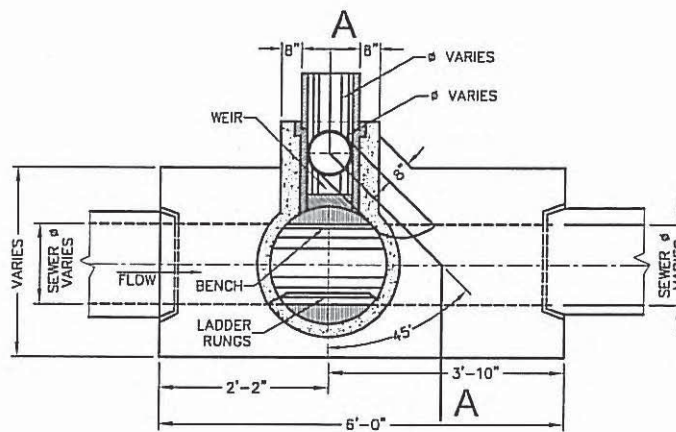
ELEVATION

	DATE	REVISION	CITY OF CHICAGO		
	—	—	TYPE 'B' MANHOLE FOR SEWERS 24" AND SMALLER		
			DATE	SHEET	DRAWN BY
			01-11-2007	A-4-5	CDOT

DROP MANHOLE TYPE "C" SECTION A - A

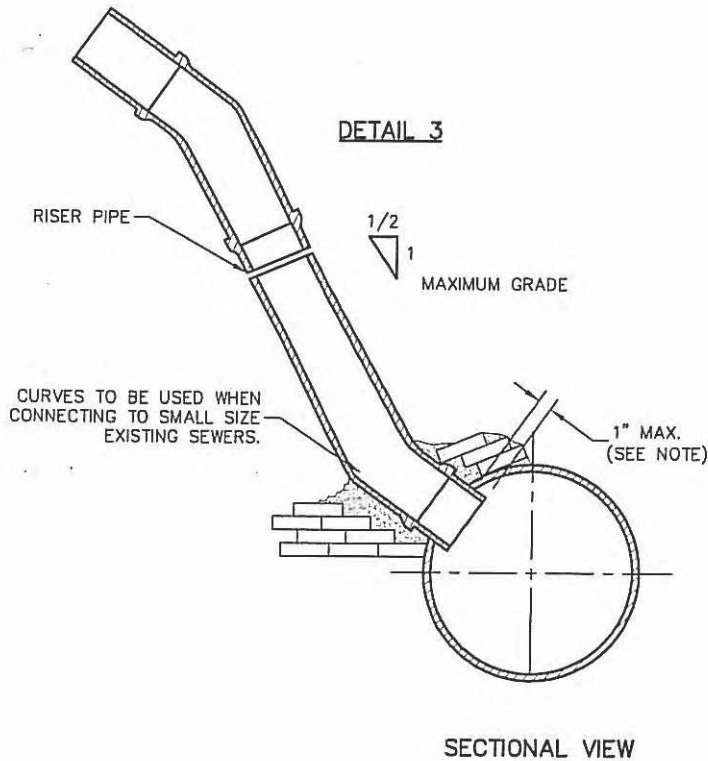
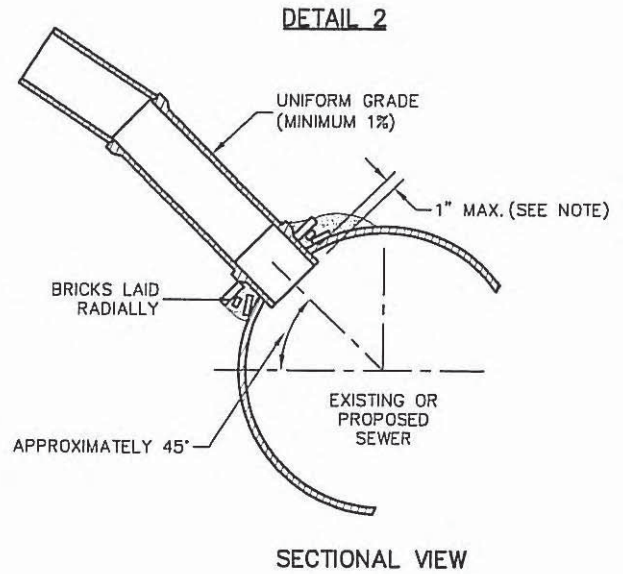
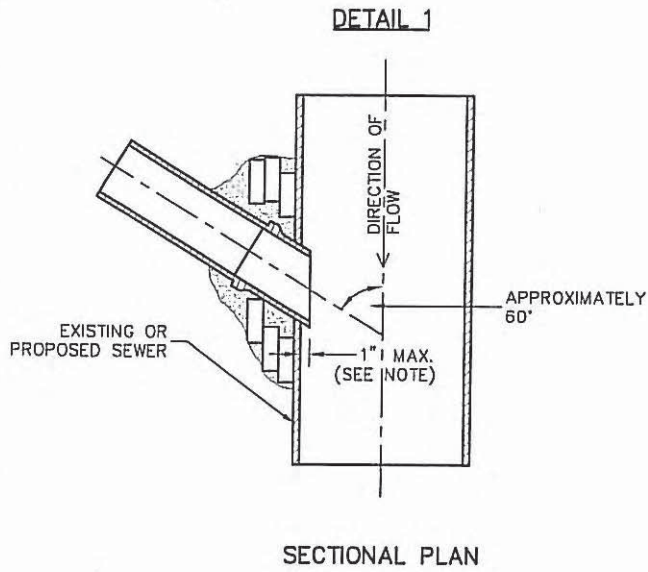


SECTIONAL PLAN



	DATE	REVISION	CITY OF CHICAGO		
	—	—	DROP MANHOLE TUPE 'C'		
			DATE	SHEET	DRAWN BY
			01/03/07	A-4-6	CDOT

DETAIL OF STORM SEWER CONNECTIONS TO SEWER



NOTE:

FOR CLAY PIPE SEWER, USE A 'Y' BRANCH FOR ALL CONNECTIONS TO PROPOSED SEWERS.

USE A 'T' OR 'Y' SADDLE FOR ALL CONNECTIONS TO EXISTING SEWERS.

USE OF A 'T' OR 'Y' CONNECTION SHALL BE INCIDENTAL TO THE STORM SEWER ITEMS.

OPENINGS IN ALL EXISTING CLAY AND CONCRETE SEWERS ARE TO BE DRILLED THE SAME SIZE AS THE EXTERNAL DIAMETER OF THE PROPOSED PIPE.

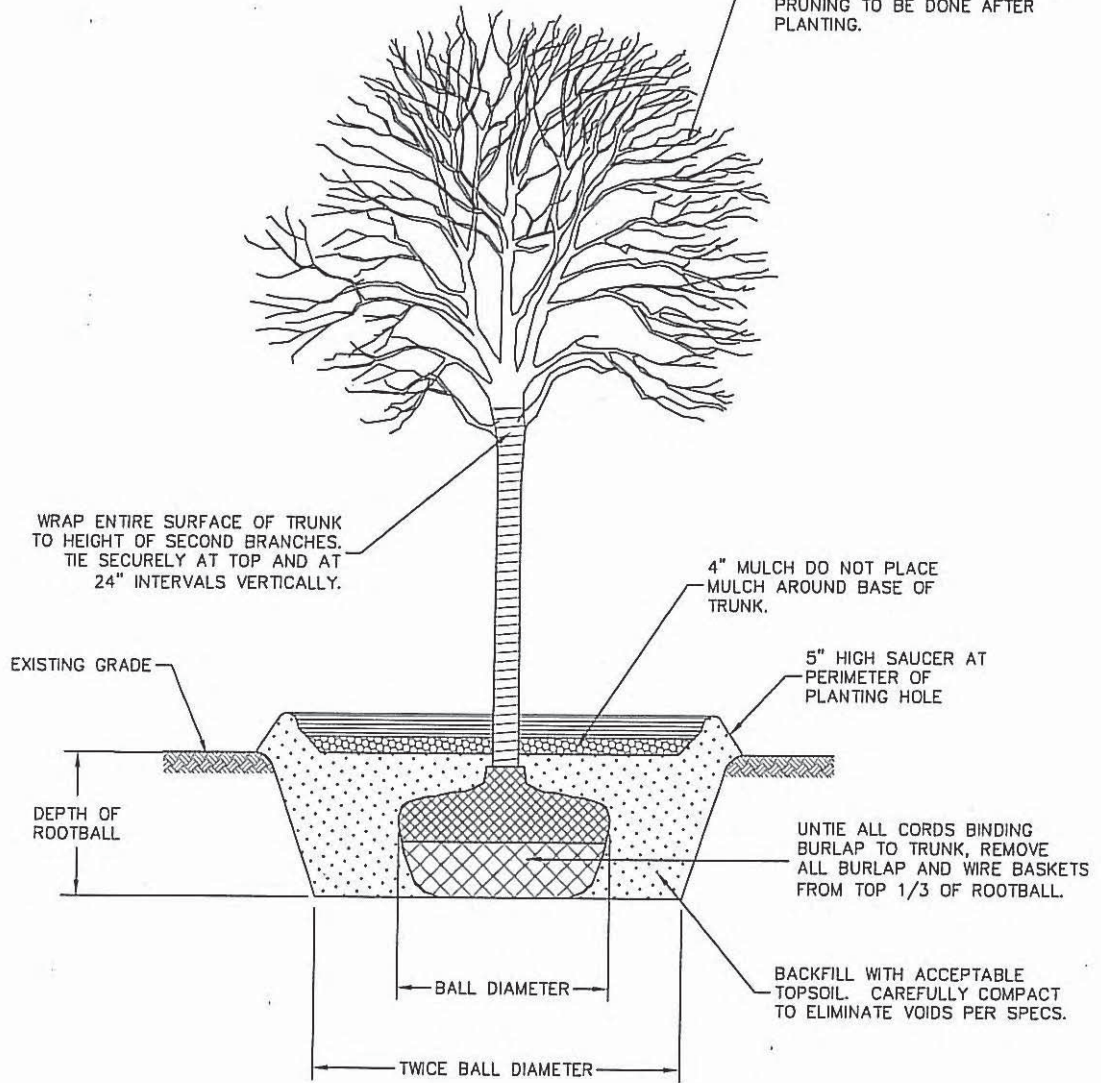


	DATE	REVISION	CITY OF CHICAGO		
	—	—	DETAIL OF STORM SEWER CONNECTIONS TO SEWER		
			DATE	SHEET	DRAWN BY
	01/02/07		A-4-7	CDOT	

Section 5

Miscellaneous Details

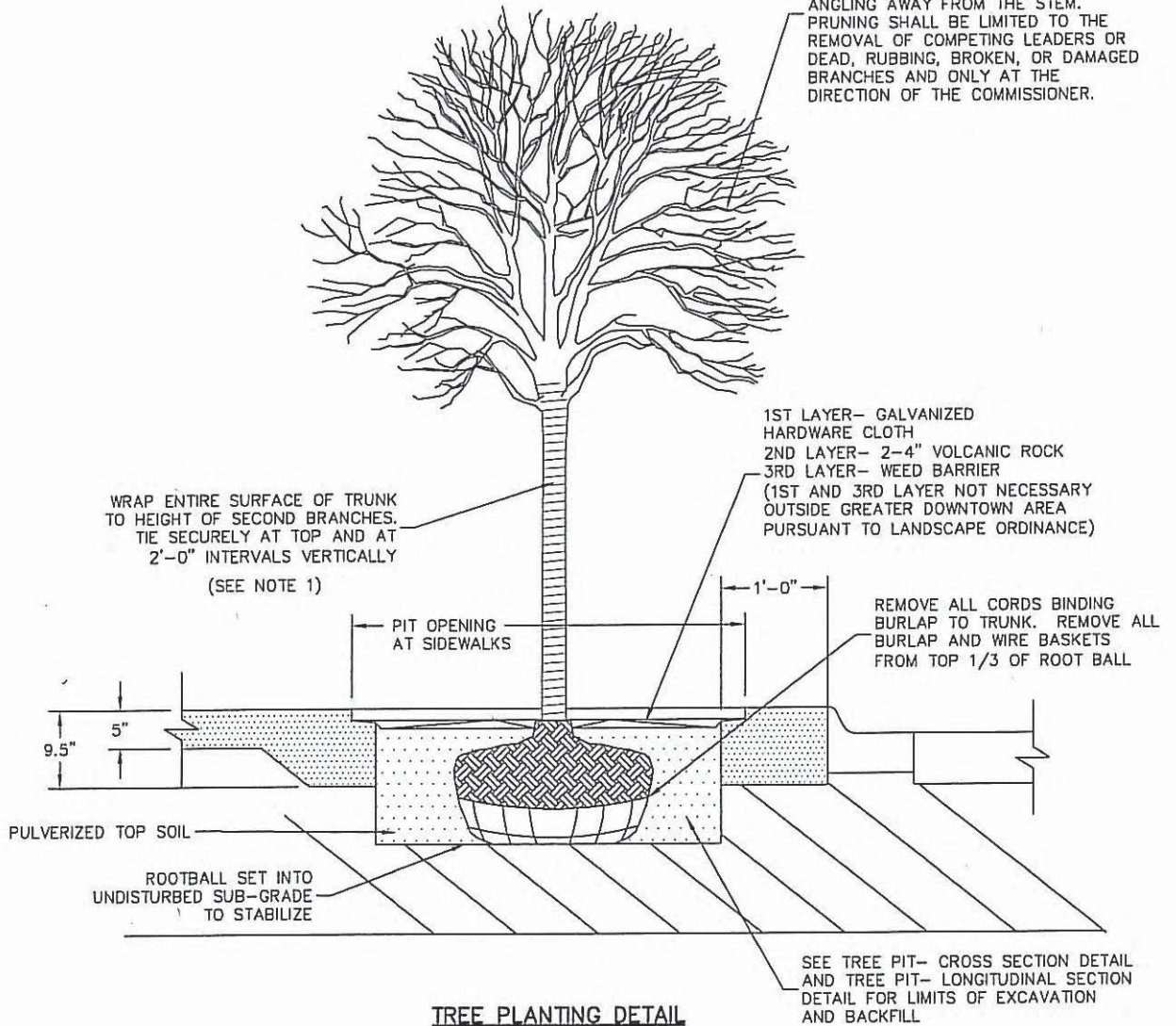
PRUNING SHALL NOT CHANGE THE HABIT OF THE TREE. ALL CUTS SHALL BE MADE FLUSH. PRUNING SHALL BE LIMITED TO REMOVAL OF COMPETING LEADERS, DEAD, RUBBING, BROKEN, OR DAMAGED BRANCHES AND TO COMPENSATE FOR THE LOSS OF ROOTS. ALL PRUNING TO BE DONE AFTER PLANTING.



DATE	REVISION	CITY OF CHICAGO		
—	—	TREE PLANTING DETAIL IN PARKWAY		
		DATE	SHEET	DRAWN BY
		01/11/2007	A-5-1	CDOT

TREE PIT OPENING 5'-0" X 5'-0"

PRUNING SHALL NOT CHANGE THE HABIT OF THE TREE. ALL CUTS SHALL BE MADE JUST OUTSIDE THE BRANCH BARK RIDGE AND COLLAR, ANGLING AWAY FROM THE STEM. PRUNING SHALL BE LIMITED TO THE REMOVAL OF COMPETING LEADERS OR DEAD, RUBBING, BROKEN, OR DAMAGED BRANCHES AND ONLY AT THE DIRECTION OF THE COMMISSIONER.

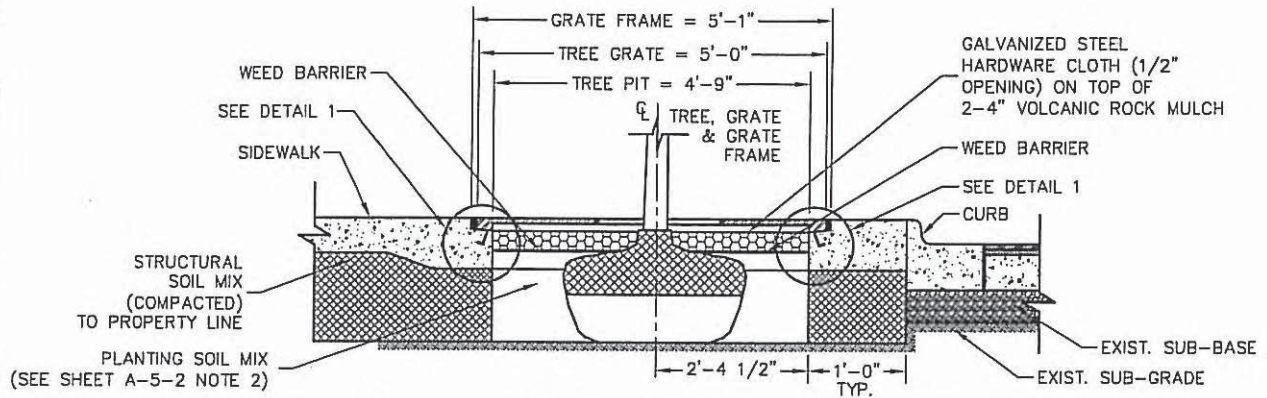


NOTES:

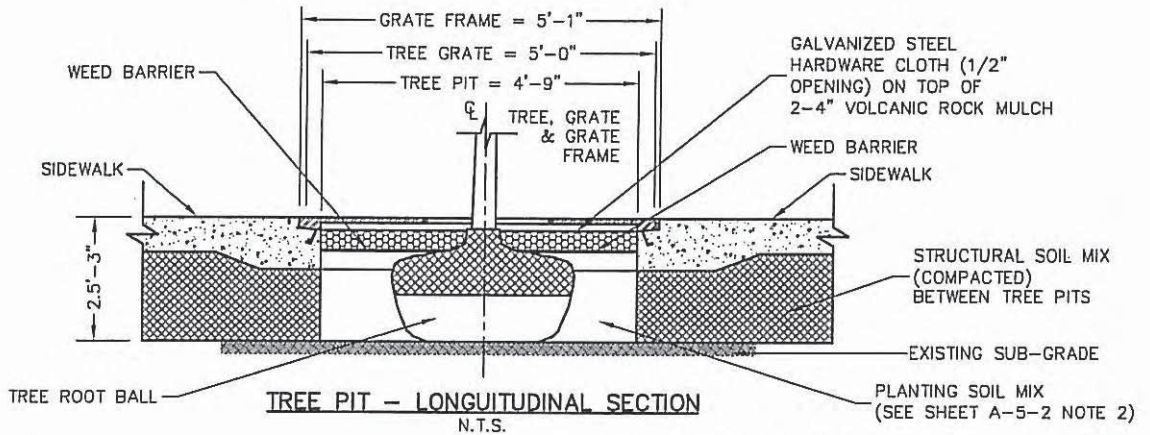
1. TREE WRAP SHOULD ONLY BE INSTALLED DURING THE FALL PLANTING SEASON. ON SPECIES SUSCEPTIBLE TO FROST, CRACKING OR SUN SCALD SUCH AS, BUT NOT LIMITED TO, THE FOLLOWING: ACER, POPULAS, TILIA, LIRIODENDRON AND FRAXINUS AMERICANA.
2. SEE PLANTING DETAIL SPECIFICATION FOR BACKFILL MATERIAL.
3. CONTRACTOR SHALL NOT LIFT TREE BY WIRE BASKET OR TRUNK.



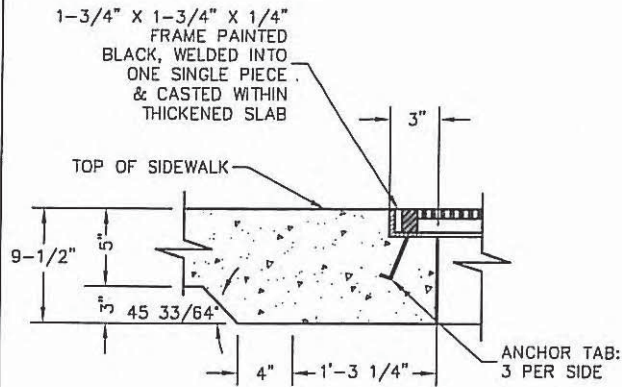
CDOT CHICAGO DEPARTMENT OF TRANSPORTATION	DATE	REVISION	CITY OF CHICAGO		
	—	—	TREE PIT DETAIL		
			DATE	SHEET	DRAWN BY
			01/11/2007	A-5-2	CDOT



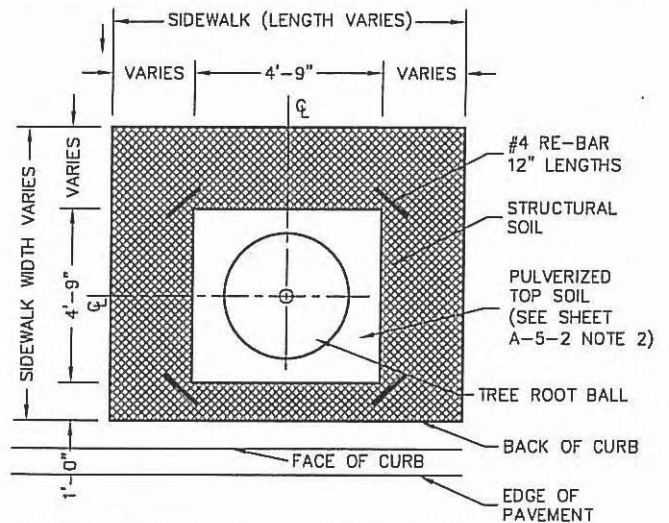
TREE PIT - CROSS SECTION (WITH STEEL TREE GRATE FRAME)
N.T.S.



TREE PIT - LONGITUDINAL SECTION
N.T.S.



DETAIL 1
GRATE FRAME AT THICKENED SLAB
N.T.S.



TREE PIT - PLAN VIEW STRUCTURAL SOIL
N.T.S.

NOTE:
HAND EXCAVATION IS REQUIRED AT LEAST 18 INCHES ON EITHER SIDE OF A MARKED FACILITY. CONTRACTOR/EXCAVATOR IS EXPECTED TO HONOR ALL TIME/MARKING REQUIREMENTS AND DIG IN A REASONABLE AND PRUDENT MANNER. TAKING ALL REASONABLE AND REQUIRED PRECAUTIONS TO AVOID DAMAGING UNDERGROUND FACILITIES. IF DAMAGE TO AN UNDERGROUND FACILITY SHOULD OCCUR, IMMEDIATELY CALL CUAN AT (312) 744-7000 TO REPORT THE DAMAGE. THEY MUST ALSO IMMEDIATELY NOTIFY THE OWNER OF THE DAMAGED FACILITY.



DATE	REVISION	CITY OF CHICAGO		
-	-	TREE PIT DETAIL		
DATE	SHEET	DRAWN BY		
01/11/2007	A-5-2A	CDOT		

SPECIFICATIONS FOR TUNNELING OR TRENCHING NEAR TREES FOR THE
INSTALLATION OF UNDERGROUND UTILITY SERVICES

<u>TREE DIAMETER</u>	<u>DISTANCE OF TUNNEL FROM TREE TRUNK</u>	<u>DISTANCE OF OPEN BYPASS TRENCH FROM TREE TRUNK</u>
INCHES	FEET	FEET
2	2	3
3	3	6
6	5*	10
12	6*	12
18	7*	14
24+	8*	16

* DEPENDENT ON PARKWAY WIDTH

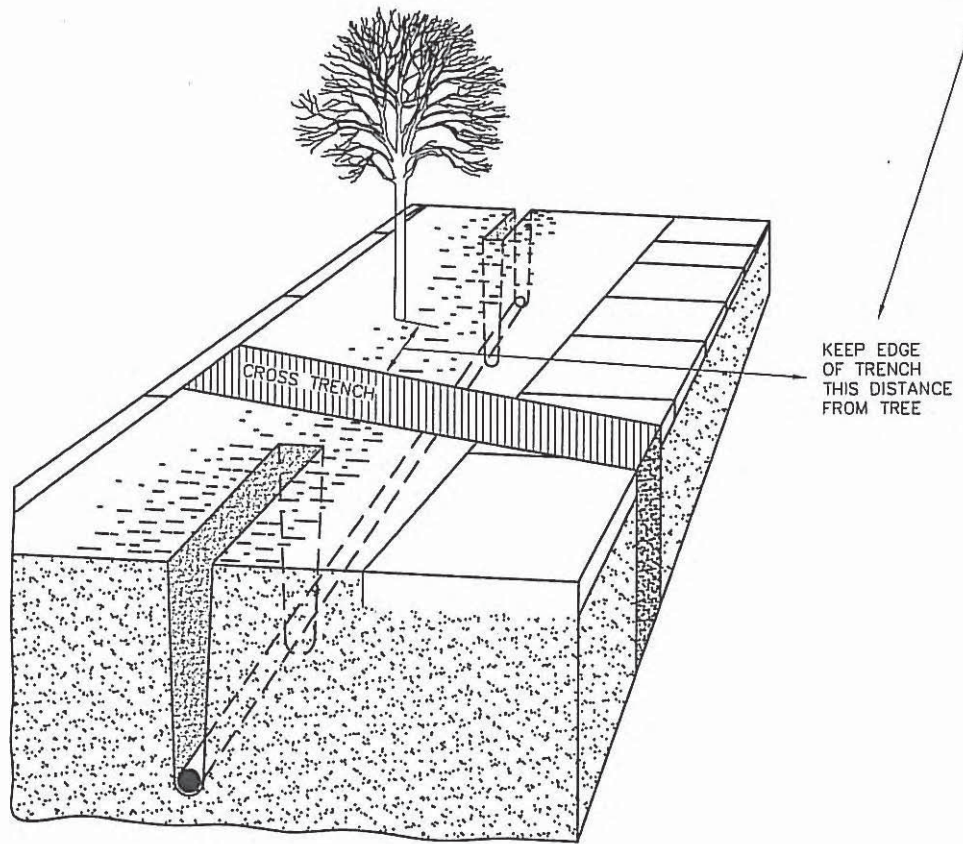
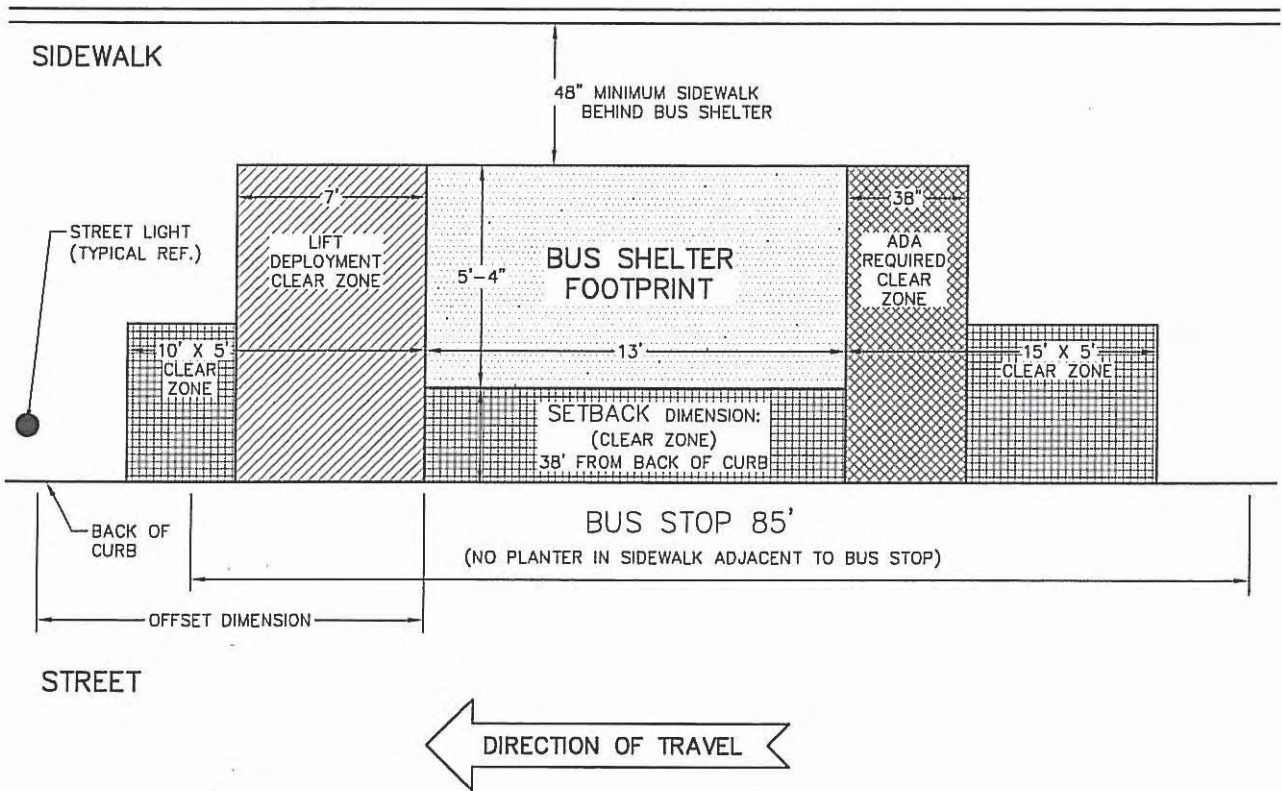


DIAGRAM ILLUSTRATING THE USE OF SOIL AUGERS IN THE PRESENCE OF TREES.

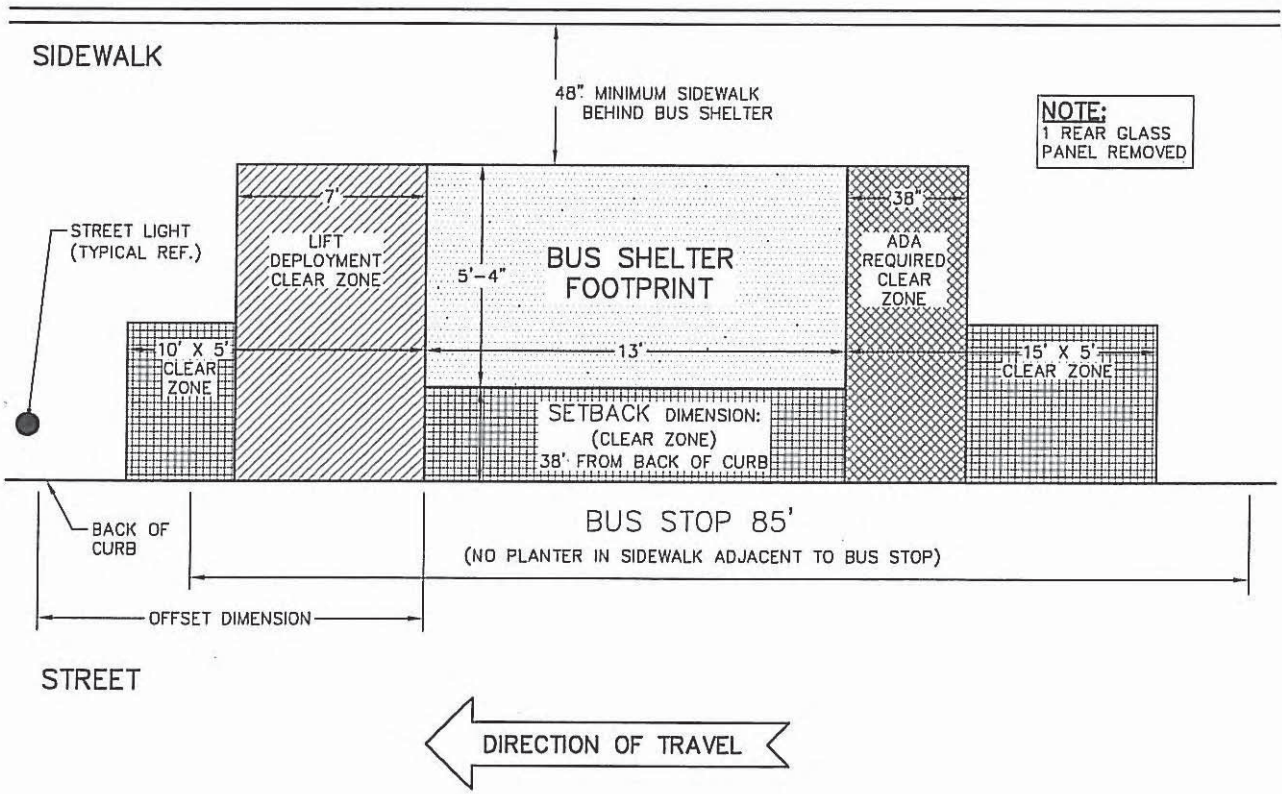
	DATE	REVISION	CITY OF CHICAGO		
	—	—	TRENCH GUIDELINES ADJACENT TO TREES		
			DATE	SHEET	DRAWN BY
			01/11/2007	A-5-3	CDOT.

**JCDECAUX BUS SHELTER
3 SECTION-FULL SIZE
NEW INSTALLATION**



	DATE	REVISION	CITY OF CHICAGO		
	-	-	BUS SHELTER		
			DATE	SHEET	DRAWN BY
			01/02/2007	A-5-4A	CDOT

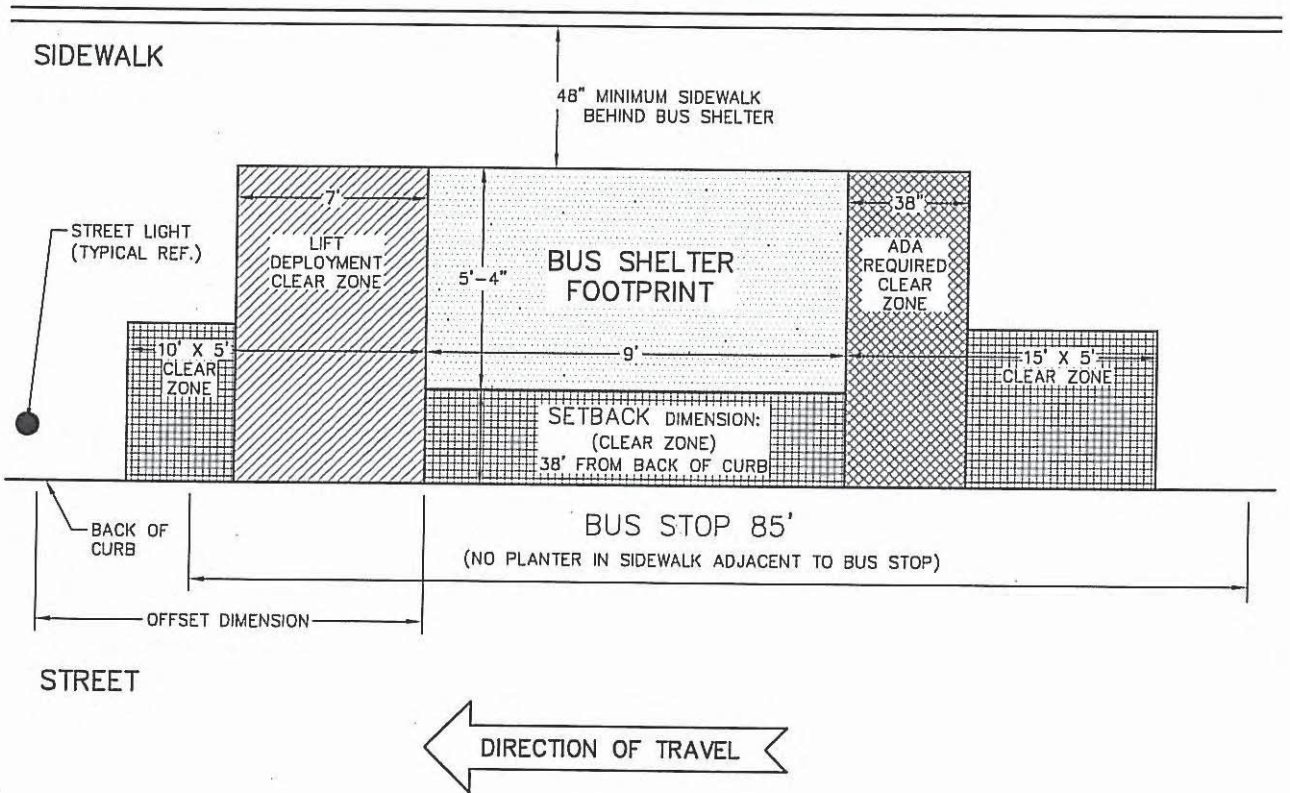
**JCDECAUX BUS SHELTER
3 SECTION-1 GLASS PANEL REMOVED
NEW INSTALLATION**



NOTE:
1 REAR GLASS
PANEL REMOVED

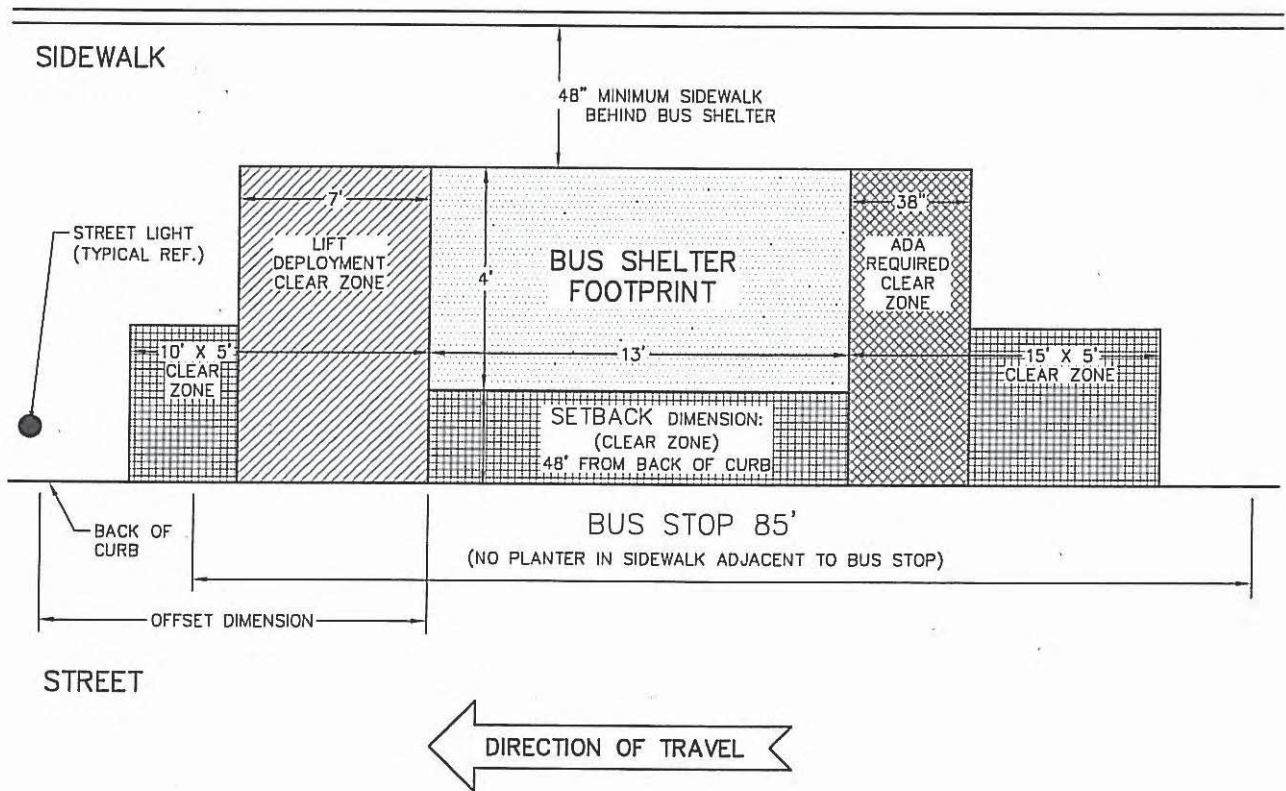
	DATE	REVISION	CITY OF CHICAGO		
	—	—	BUS SHELTER		
			DATE	SHEET	DRAWN BY
			01/02/2007	A-5-4B	CDOT

JCDECAUX BUS SHELTER
2 SECTION-FULL SIZE
NEW INSTALLATION



	DATE	REVISION	CITY OF CHICAGO		
	-	-	BUS SHELTER		
			DATE	SHEET	DRAWN BY
			01/02/2007	A-5-4C	CDOT

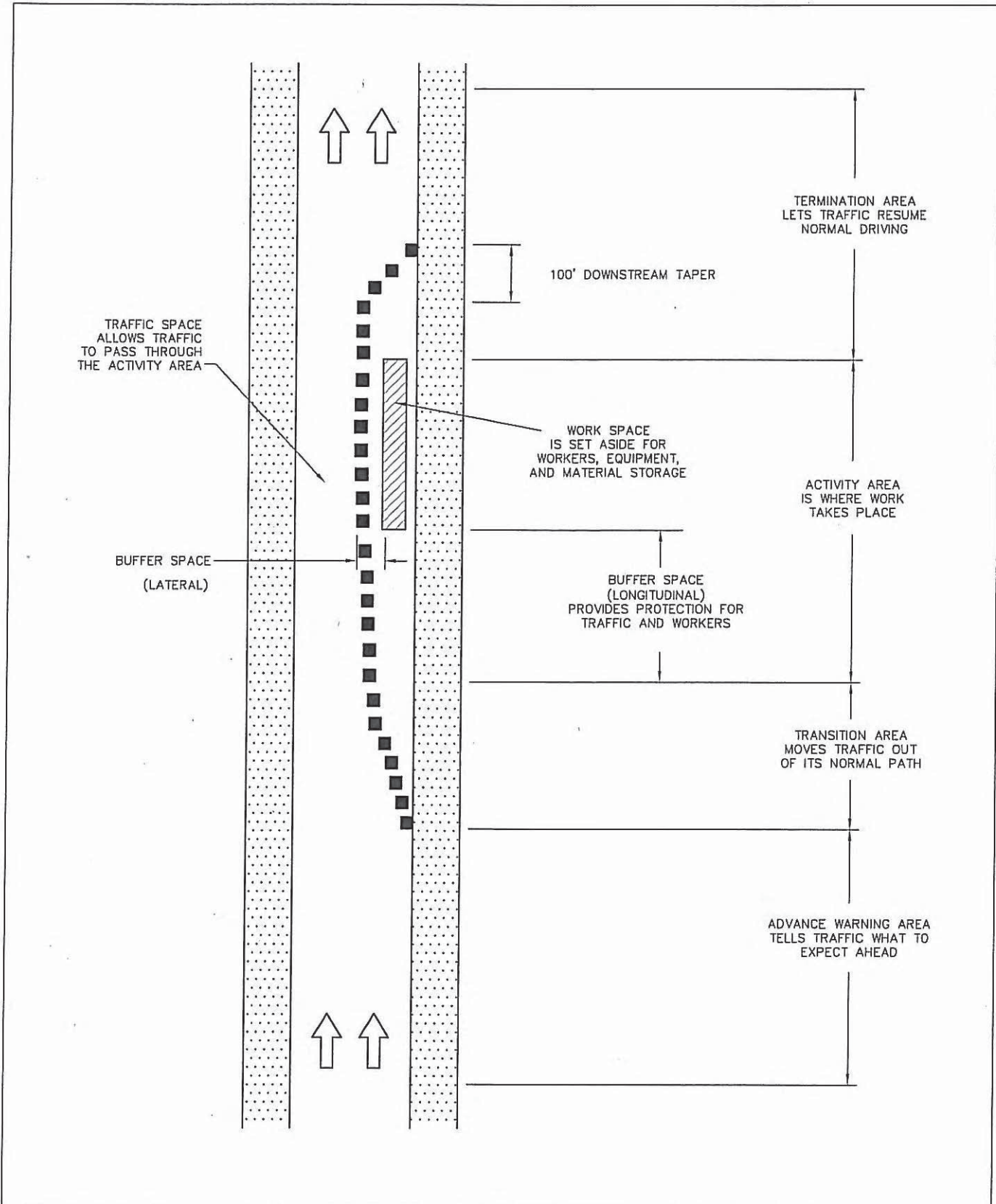
**JCDECAUX BUS SHELTER
3 SECTION-NARROW SIZE
NEW INSTALLATION**



DATE	REVISION	CITY OF CHICAGO		
—	—	BUS SHELTER		
		DATE	SHEET	DRAWN BY
		01/02/2007	A-5-4D	CDOT

Section 6

TRAFFIC CONTROL DETAILS

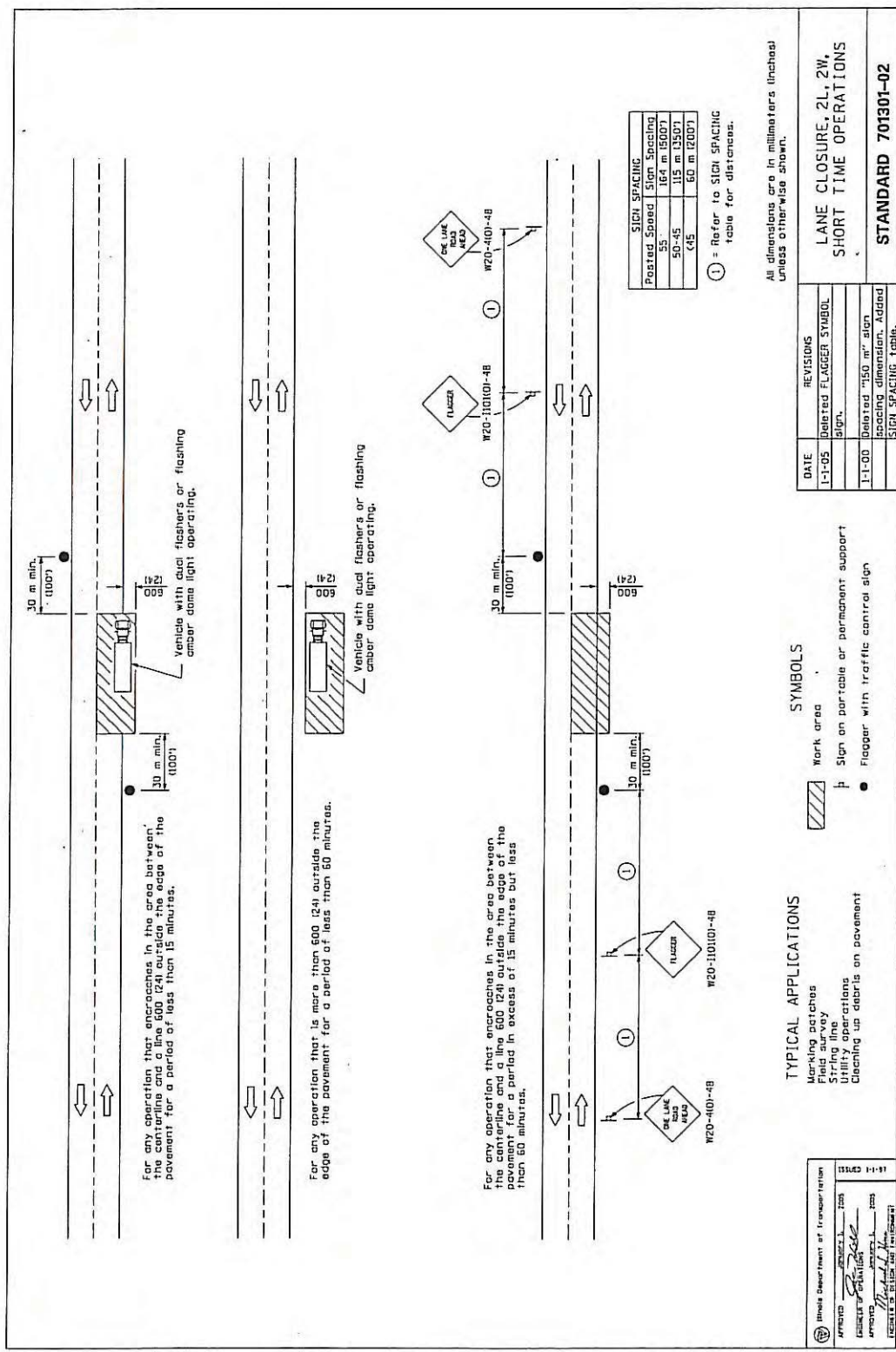


	DATE	REVISION	CITY OF CHICAGO		
	—	—	AREA IN TRAFFIC CONTROL ZONE		
			DATE	SHEET	DRAWN BY
			01/11/2007	A-6-1	CDOT



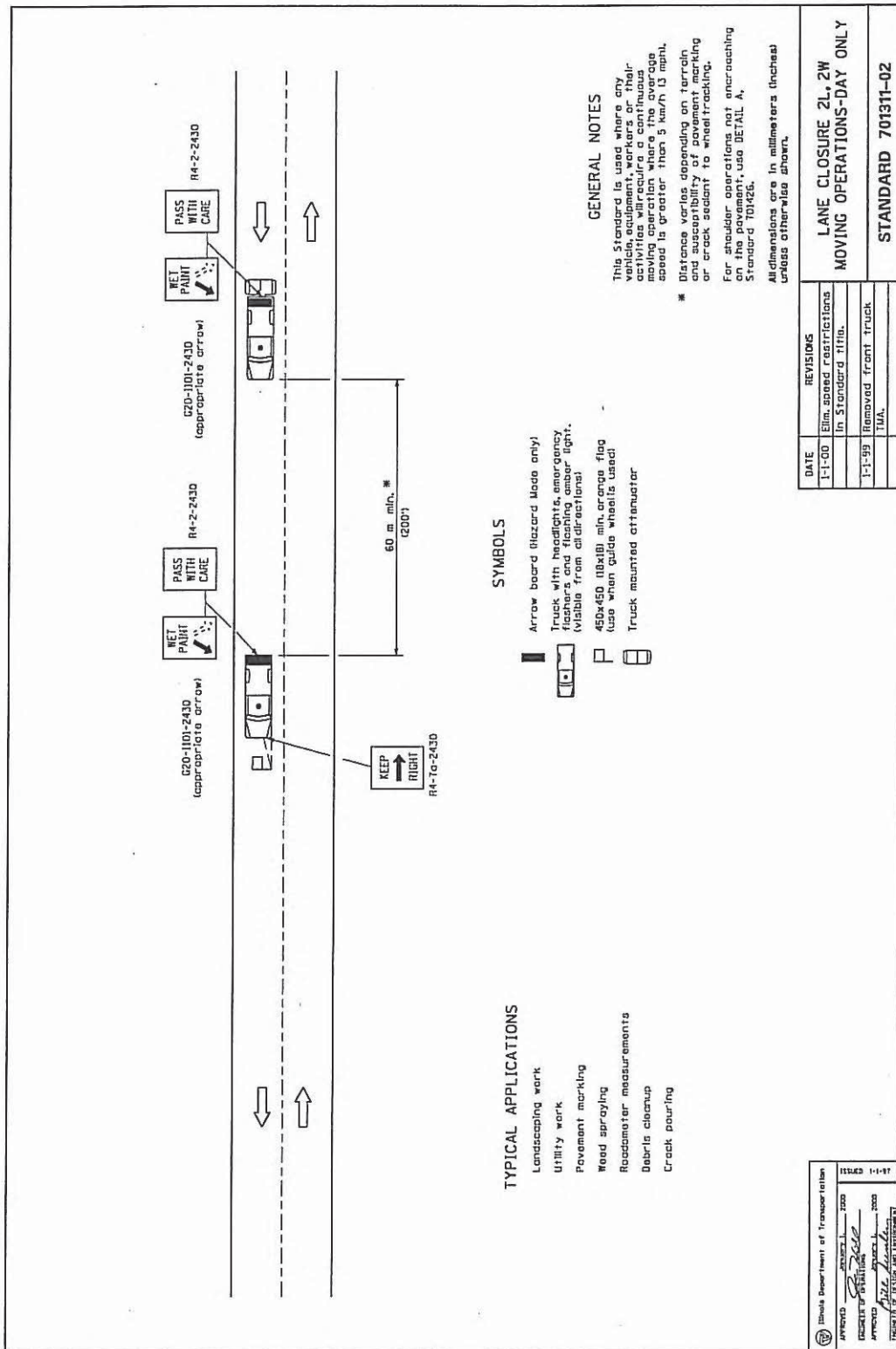
DATE	REVISION
—	—

CITY OF CHICAGO		
LANE CLOSURE, 2L, 2W, SHORT TIME OPERATIONS		
DATE	SHEET	DRAWN BY
01/12/07	A-6-2	CDOT





DATE	REVISION	CITY OF CHICAGO		
-	-	LANE CLOSURE 2L, 2W, MOVING OPERATIONS - DAY ONLY		
		DATE	SHEET	DRAWN BY
		01/12/07	A-6-3	CDOT



ISSUED 1-1-97

APPROVED [Signature] 2000

DESIGNED [Signature] 2000

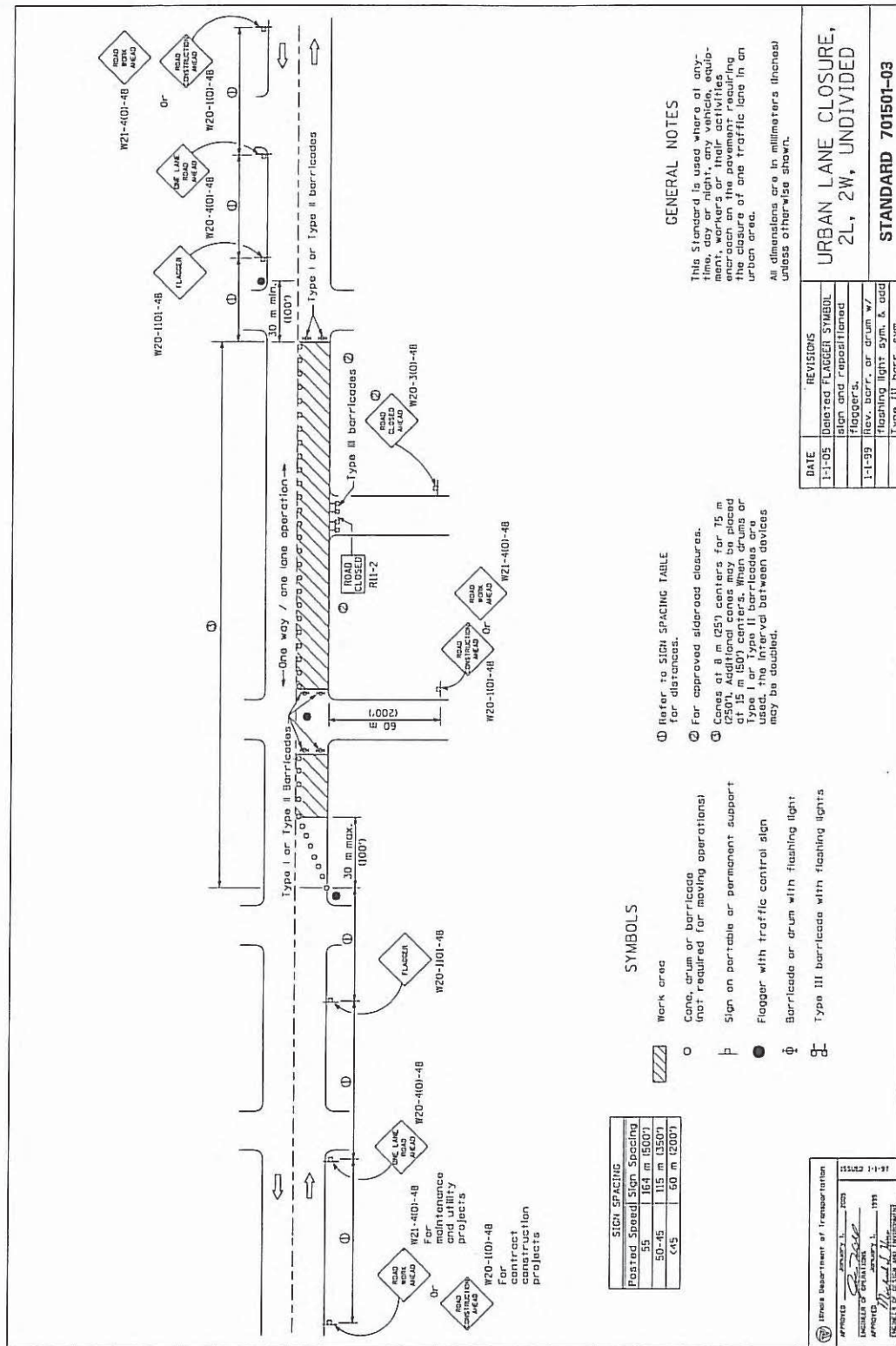
CHECKED [Signature] 2000

PROJECT FILE NUMBER [Number]

ISSUED BY [Signature]



DATE	REVISION	CITY OF CHICAGO		
—	—	URBAN LANE CLOSURE, 2L, 2W, UNDIVIDED		
DATE	SHEET	DRAWN BY		
01/12/07	A-6-4	CDOT		



Posted Speed	Sign Spacing
35	164 m (500')
50-65	115 m (350')
≥ 65	60 m (200')

APPROVED	DESIGNED	DATE
<i>[Signature]</i>	<i>[Signature]</i>	11/12/07
CHIEF ENGINEER	DESIGNER	
<i>[Signature]</i>	<i>[Signature]</i>	11/12/07
APPROVED	DATE	
<i>[Signature]</i>	11/12/07	
RESULTS OF FIELD AND LABORATORY		

DATE	REVISIONS
1-1-05	Deleted FLAGGER SYMBOL sign and repositioned flaggers.
1-1-99	Rev. barr. or drum w/ flashing light sym. & add Type III barr. sym.

URBAN LANE CLOSURE, 2L, 2W, UNDIVIDED

STANDARD 701501-03



DATE		REVISION		CITY OF CHICAGO	
-		-		URBAN LANE CLOSURE, 2L, 2W, WITH BIDIRECTIONAL TURN LANE	
DATE	SHEET	DRAWN BY			
01/12/07	A-6-5A	CDOT			

GENERAL NOTES

This Standard is used to close one lane of an urban, two lane, two way roadway with a bidirectional turn lane.

Case I applies when no workers are present. When workers are present, two lanes shall be closed and traffic control shall be according to Standard 701501.

Calculate L as follows:

SPEED LIMIT	Metric	(English)
70 km/h (40 mph) or less:	$L = WS^2$	$L = \frac{WS^2}{150}$
80 km/h (45 mph) or greater:	$L = 0.65W(S+15)$	$L = (W+5)S$

W = Width of offset, in meters (feet).
S = Normal posted speed, in meters (feet).

All dimensions are in millimeters (inches) unless otherwise shown.

CASE I
Signs required for both directions

REFER TO SIGN SPACING TABLE

- Refer to sign spacing table for distances.
- Required for speeds > 70 km/h (40 mph).
- Required if work exceeds 164 m (500') or 1 block.
- For speeds exceeding 80 km/h (45 mph) contact the District Operations Office for approval of sign spacing.
- Cones at 8 m (25 ft) centers for 75 m (250') or 150 m (500') centers. When drums or Type I or II barricades are used, the interval between devices may be doubled.
- For approved sidewalk closures.

SYMBOLS

- ↑ Arrow board
- ▨ Mark area
- ⊕ Barricade or drum with steady burning mandirectional light
- ⊖ Barricade or drum without flashing light
- Flagger with traffic control sign
- Cone, drum or barricade (Cones for daytime use only)
- ⊥ Sign on portable or permanent support

POSTED SPEED	Sign Spacing
55 (45)	150 m (500')
50-45 (40)	115 m (350')
45	60 m (200')

DATE	REVISIONS
1-1-05	Revised notes and deleted PLACER SYMBOL sign.
1-1-01	New Standard

ISSUED 1-1-01

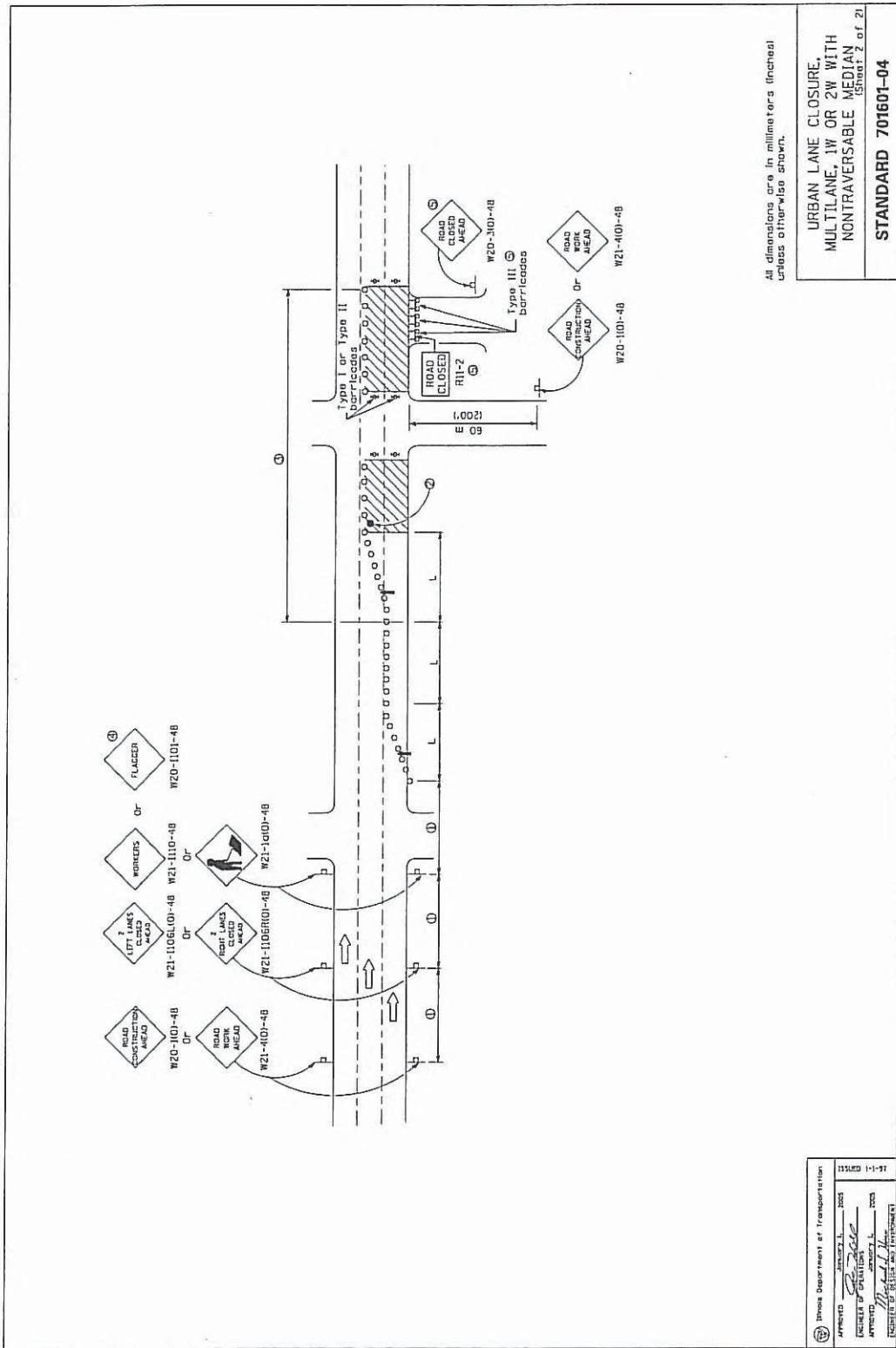
APPROVED: [Signature] 2002

DESIGNED: [Signature] 2002

APPROVED: [Signature] 2005

DESIGNED: [Signature] 2005

CHICAGO DEPARTMENT OF TRANSPORTATION



All dimensions are in millimeters (inches) unless otherwise shown.

URBAN LANE CLOSURE,
MULTILANE, 1W OR 2W WITH
NONTRAVERSABLE MEDIAN
(Sheet 2 of 2)
STANDARD 701601-04

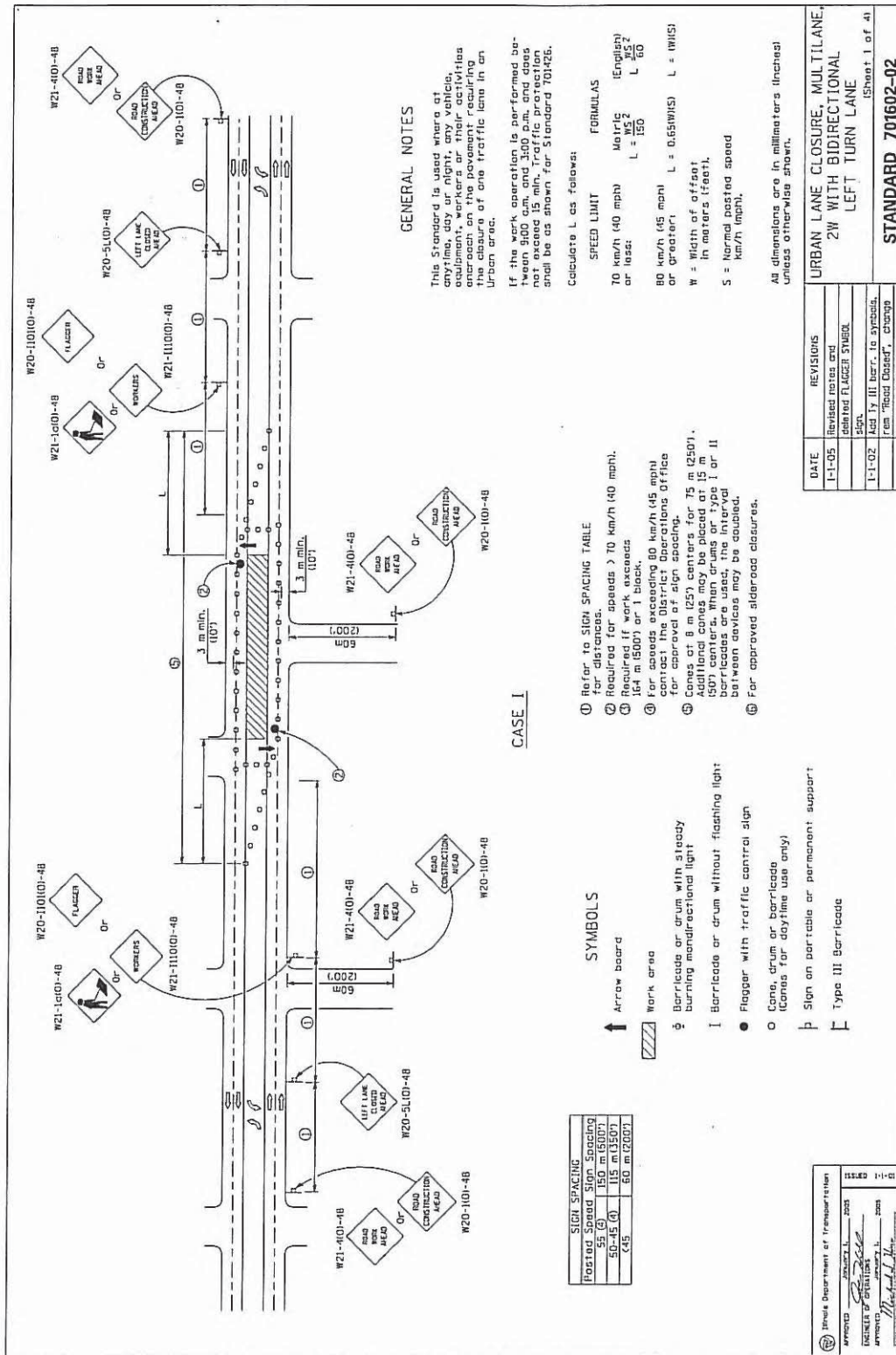
Chicago Department of Transportation
APPROVED: [Signature] JANUARY 1, 2005
EXEMPTED BY: [Signature]
APPROVED: [Signature] JANUARY 1, 2005
DESIGNED BY: [Signature]
ISSUED 1-1-97



DATE	REVISION
-	-

CITY OF CHICAGO		
URBAN LANE CLOSURE, 1W, 2W, WITH NON-TRAVERSABLE MEDIAN		
DATE	SHEET	DRAWN BY
01/12/07	A-6-6B	CDOT

DATE	REVISION	CITY OF CHICAGO		
-	-	URBAN LANE CLOSURE, WITH MULTILANE, 2W, WITH BIDIRECTIONAL LEFT TURN LANE		
DATE	SHEET	DRAWN BY		
01/12/07	A-6-7A	CDOT		



GENERAL NOTES

This Standard is used where at anytime, day or night, any vehicle, equipment, workers or their activities are on the pavement recurring in the course of one traffic lane in an Urban area.

If the work operation is performed between 3000 hrs and 3000 hrs, and does not meet the criteria for Standard 701426, shall be as shown for Standard 701426.

Calculate L as follows:

SPEED LIMIT	FORMULAS
70 km/h (40 mph) or less:	$M = 0.52$ $L = 150$
80 km/h (45 mph) or greater:	$M = 0.65$ $L = 175$

W = Width of offset in meters (feet).
S = Normal posted speed km/h (mph).

All dimensions are in millimeters (inches) unless otherwise shown.

- REF TO SIGN SPACING TABLE**
- ① Refer to sign spacing table for distances.
 - ② Required for speeds > 70 km/h (40 mph).
 - ③ Required if work exceeds 164 m (530') or 1 block.
 - ④ For speeds exceeding 80 km/h (45 mph) or approved by Illinois Office for approved sign spacing.
 - ⑤ Cones of 8 m (25') centers for 75 m (250'). Additional cones may be placed at 15 m (50') centers. When drums or type I or II barricades are used, the interval between devices may be doubled.
 - ⑥ For approved alderoad closures.

SYMBOLS

- ↑ Arrow board
- ▨ Work area
- ⊕ Barricade or drum with steady burning nonreflective light
- ⊖ Barricade or drum without flashing light
- Flagger with traffic control sign
- Cone, drum or barricade (cones for daytime use only)
- ⊥ Sign on portable or permanent support
- ⊢ Type III Barricade

POSTED SPEED	SPACING
55 (4)	150 m (500')
50-45 (4)	115 m (350')
45	60 m (200')

APPROVED	ISSUED
01/12/07	1-12
APPROVED BY	ISSUED BY
APPROVED BY	ISSUED BY

DATE	REVISIONS
1-1-05	Revised notes and added FLAGGER SYMBOL
1-1-02	Rev. by III Barr. to comply with "Road Closed" change

URBAN LANE CLOSURE, MULTILANE, 2W WITH BIDIRECTIONAL LEFT TURN LANE (Sheet 1 of 4)
STANDARD 701602-02



DATE	REVISION
—	—

CITY OF CHICAGO		
URBAN LANE CLOSURE, MULTILANE, 2W, WITH MOUNTABLE MEDIAN		
DATE	SHEET	DRAWN BY
01/12/07	A-6-8A	CDOT

Posted Speed	Sign Spacing
55	164 m (500')
50-45	115 m (350')
45	60 m (200')

GENERAL NOTES

This Standard is used, where, at any time, day or night any vehicle, equipment, workers or their activities encroach on the pavement requiring the closure of one or more traffic lanes in an urban area.

Calculate L as follows:

SPEED LIMIT
 70 km/h (40 mph) or less: $L = \frac{WS^2}{150}$
 80 km/h (45 mph) or greater: $L = 0.55(WMS)$ L = (WMS)

FORMULAS
 Message (English): $L = \frac{WS^2}{150}$
 Message (Metric): $L = \frac{WS^2}{150}$

W = Width of offset in meters (feet).
 S = Normal posted speed km/h (mph).

All dimensions are in millimeters (inches) unless otherwise shown.

SYMBOLS

- ↑ Arrow board
- Cone, drum or barricade
- ⊥ Sign on portable or permanent support
- ▨ Work area
- ⊕ Barricade or drum with flashing light
- ⊙ Type III barricade with flashing lights
- Flagger with traffic control sign.

REFER TO SIGN SPACING TABLE FOR DISTANCES.

① Required for speeds > 40 MPH

② Use flagger sign only when flagger is present.

③ For approved advance closures.

④ Cones or 8 m (25') centers for 75 m (250'). Additional cones may be placed at 15 m (50') centers. When drums or Type I or Type II barricades are used, the interval between devices may be doubled.

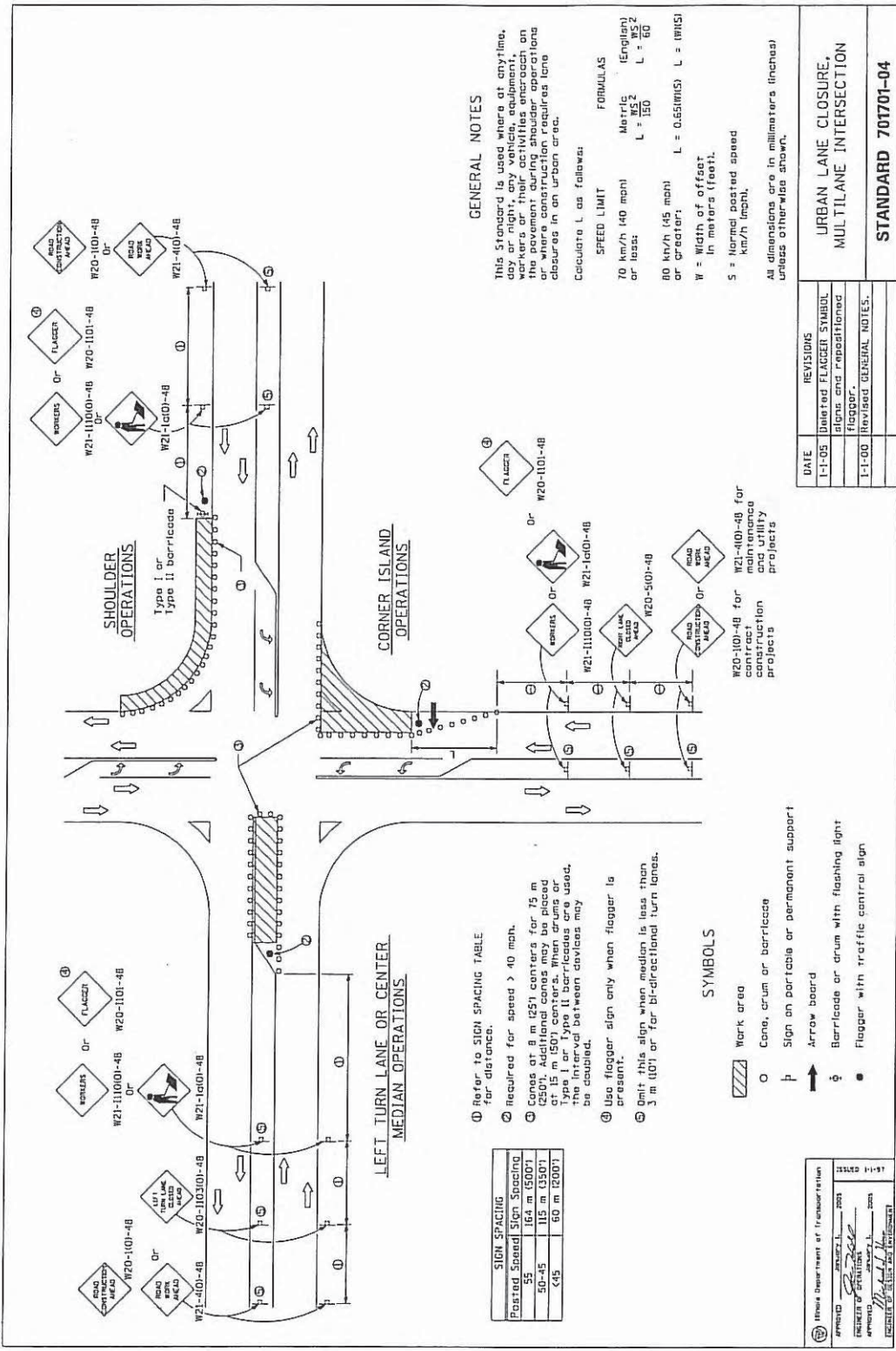
REVISIONS

DATE	REVISIONS
1-1-05	Added tangent distance to 2 lane closure taper.
1-1-00	Rev. GENERAL NOTES and INT. LINES CLOSED AHEAD Sign number.

URBAN LANE CLOSURE, MULTILANE, 2W WITH MOUNTABLE MEDIAN
 STANDARD 701606-04
 (Sheet 1 of 2)

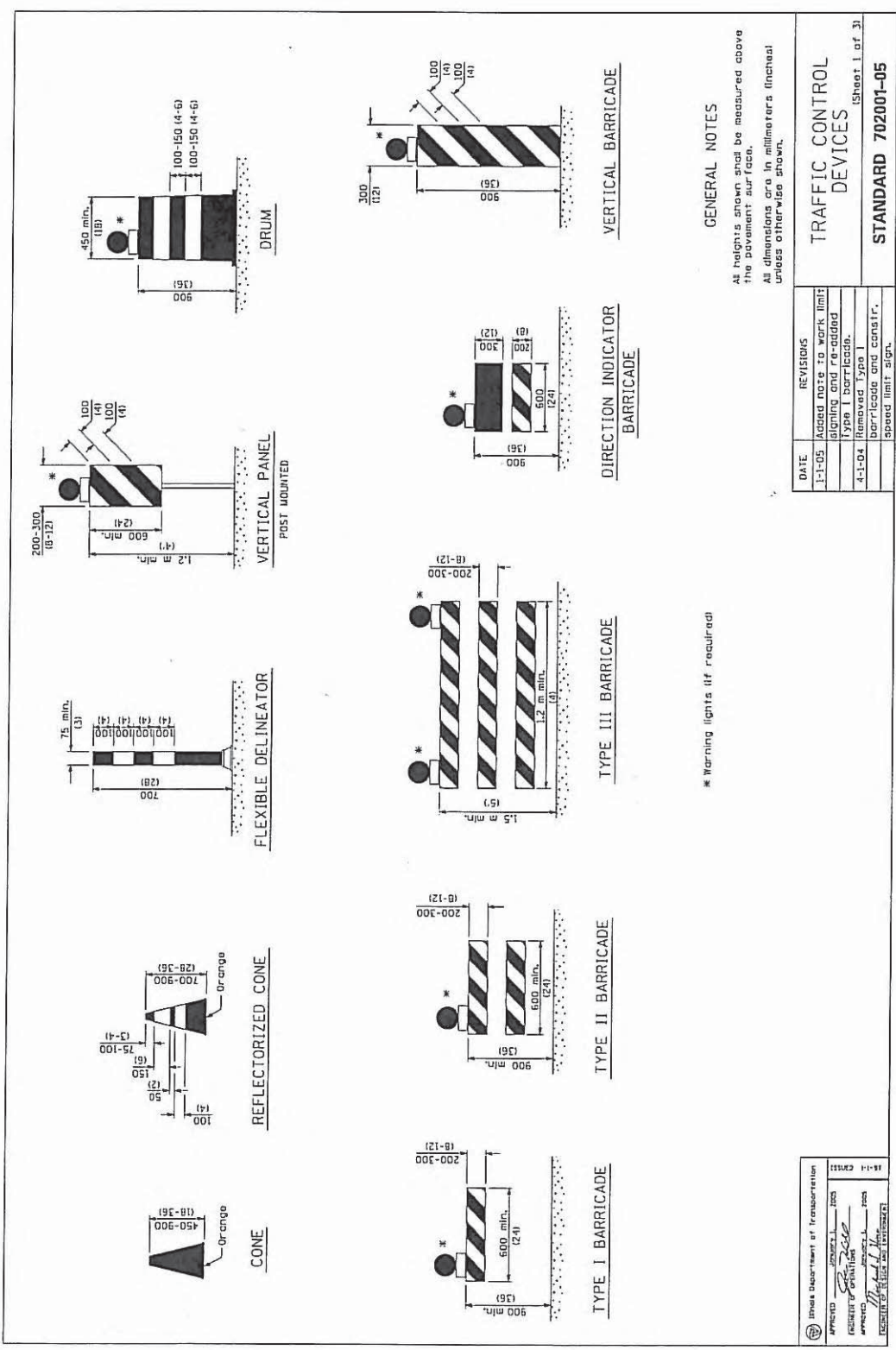


DATE	REVISION	CITY OF CHICAGO	
-	-	URBAN LANE CLOSURE, MULTILANE INTERSECTION	
DATE	SHEET	DRAWN BY	
01/12/07	A-6-9	CDOT	





DATE	REVISION	CITY OF CHICAGO	
-	-	TRAFFIC CONTROL DEVICES	
DATE	SHEET	DRAWN BY	
01/12/07	A-6-10A	CDOT	



* Warning lights if required

GENERAL NOTES

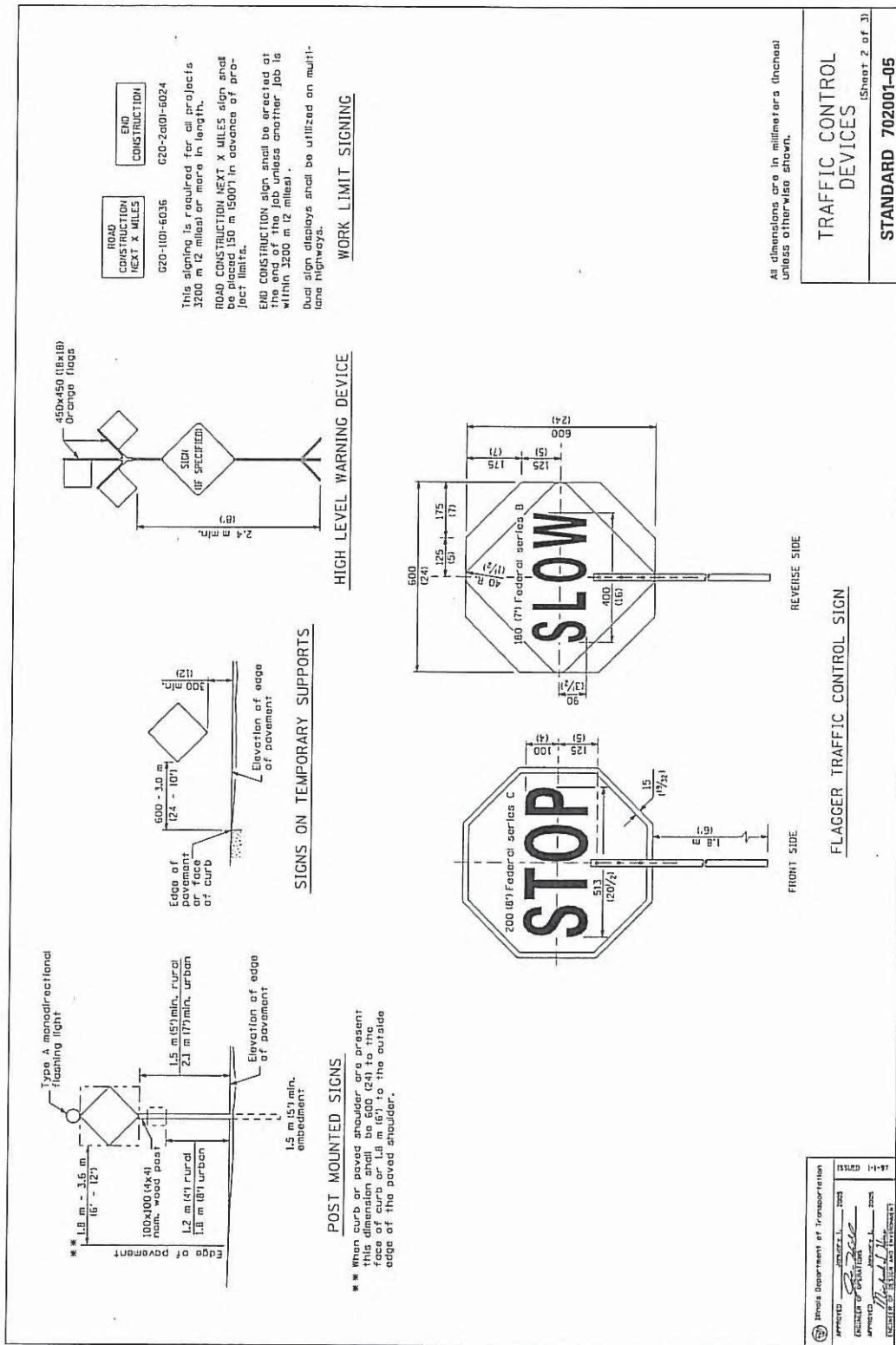
All heights shown shall be measured above the pavement surface.
 All dimensions are in millimeters (inches) unless otherwise shown.

APPROVED	DESIGNED	DATE
<i>[Signature]</i>	<i>[Signature]</i>	01/12/07
ILLINOIS DEPARTMENT OF TRANSPORTATION		
DIVISION OF SAFETY		
DESIGNER: [Signature]		

DATE	REVISIONS
1-1-05	Added note to work limit signing and re-added Type I barricade.
4-1-04	Renamed Type I barricade and constri. Speed limit sign.

TRAFFIC CONTROL DEVICES
 STANDARD 702001-05
 (Sheet 1 of 3)

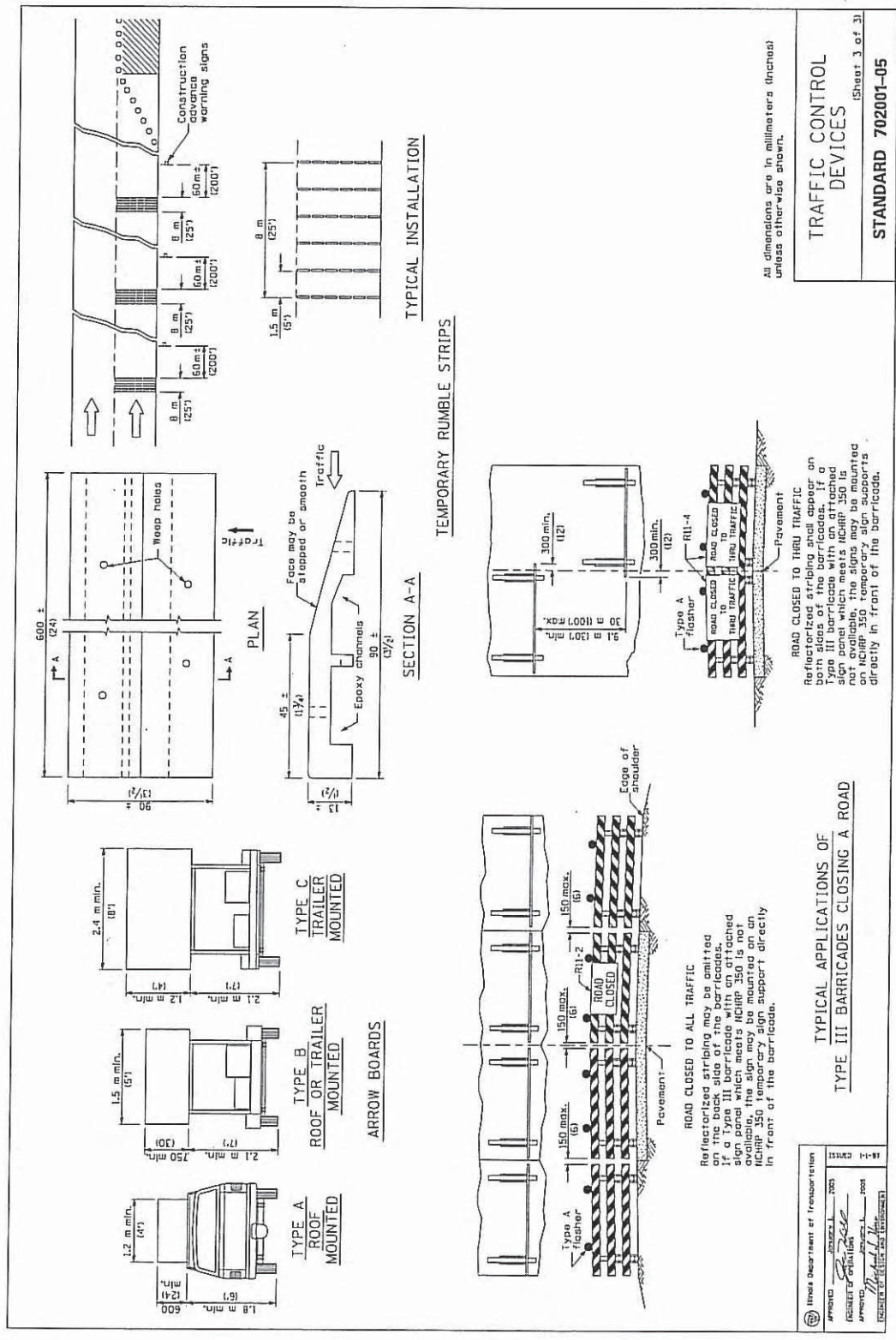
DATE		REVISION		CITY OF CHICAGO		
-		-		TRAFFIC CONTROL DEVICES		
DATE		SHEET		DRAWN BY		
01/12/07		A-6-10B		CDOT		



APPROVED: [Signature] 1/12/07
 CHIEF OF BUREAU
 DIVISION OF TRAFFIC CONTROL
 ILLINOIS DEPARTMENT OF TRANSPORTATION

ISSUED: 1-97

DATE	REVISION	CITY OF CHICAGO		
—	—	TRAFFIC CONTROL DEVICES		
DATE	SHEET	DRAWN BY		
01/12/07	A-6-10C	CDOT		



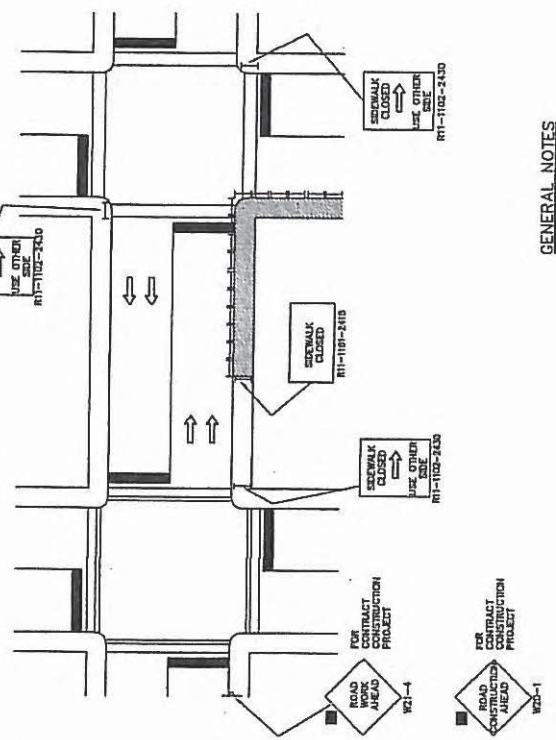
Illinois Department of Transportation
 APPROVED: [Signature] JUNE 1, 2005
 PROJECT: CHICAGO
 DRAWN BY: [Signature]
 CHECKED BY: [Signature]

TRAFFIC CONTROL DEVICES
 STANDARD 702001-05
 (Sheet 3 of 3)
 All dimensions are in millimeters (inches) unless otherwise shown.

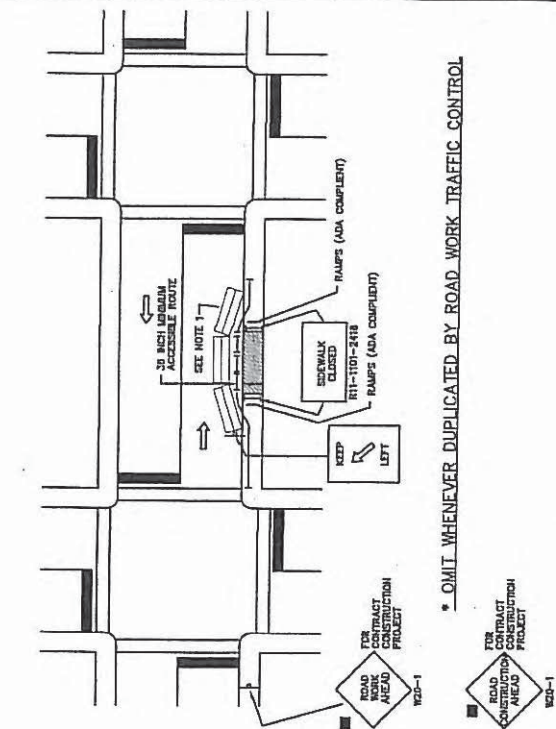
DATE	REVISION
-	-

CITY OF CHICAGO		
CROSSWALK AND SIDEWALK CLOSURE		
DATE	SHEET	DRAWN BY
01/23/07	A-6-11	CDOT

CORNER CLOSURE



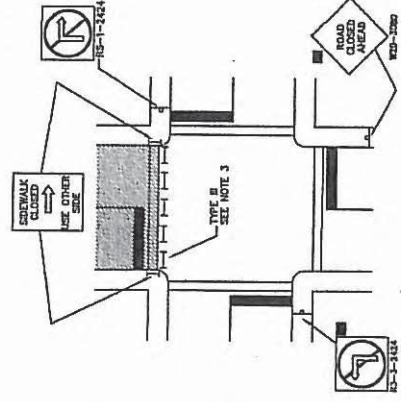
MID-CLOCK CLOSURE



GENERAL NOTES

- A TEMPORARY WALKWAY MAY ENCRDACH ON AN EXISTING PARKING LANE. IF THE TEMPORARY WALKWAY ENCRDACHES ON A TRAVEL LANE, THE LANE SHALL BE CLOSED IN ACCORDANCE WITH APPROPRIATE LANE CLOSURE DETAILS.
- THE SIDEWALK CLOSED / USE OTHER SIDE SIGN SHALL BE PLACED AT THE NEAREST CROSSWALK OR INTERSECTION TO EACH END OF THE CLOSURE. WHERE THE CLOSURE OCCURS AT A CORNER, THE SIGNS SHALL BE ERECTED ON THE CORNERS ACROSS THE STREET FROM THE CLOSURE. THE SIDEWALK CLOSED SIGNS SHALL BE USED AT THE ENDS OF THE ACTUAL CLOSURES.
- ALL WALKWAYS SHALL BE CLEARLY IDENTIFIED, PROTECTED FROM MOTOR VEHICLE TRAFFIC, AND FREE OF ANY OBSTRUCTIONS AND HAZARDS SUCH AS HOLES, DEBRIS, MUD, CONSTRUCTION EQUIPMENT, STORED MATERIALS, ETC.
- ALL HAZARDS (DITCHES, TRENCHES, EXCAVATIONS, ETC.) NEAR OR ADJACENT TO WALKWAYS SHALL BE ALREADY DELINEATED.
- TYPE III BARRILOADS AND R11-2-4830 SIGNS SHALL BE POSITIONED AS SHOWN IN 'ROAD CLOSED TO ALL TRAFFIC' DETAIL ON HIGHWAY STANDARD 2239B.
- WHEN THE POSTED SPEED LIMIT IS 35 M.P.H. OR MORE, ALL WARNING SIGNS SHALL HAVE A MINIMUM DIMENSION OF 48 IN. OR, WITH THE APPROVAL OF THE ENGINEER, 36 IN. BY 36 IN. IF THE POSTED SPEED LIMITS IS 30 M.P.H. OR LESS, ALL WARNING SIGNS SHALL HAVE A MINIMUM DIMENSION OF 36 IN. BY 36 IN.
- WHEN THE EXISTING PEDESTRIAN ACCESS ROUTE IS BLOCKED BY CONSTRUCTION, ALTERATION, MAINTENANCE, OR OTHER TEMPORARY CONDITIONS, AN ALTERNATE PEDESTRIAN ACCESS ROUTE COMPLYING TO THE MAXIMUM EXTENT FEASIBLE WITH APPENDIX B, ADA STANDARDS SHALL BE PROVIDED.
- BARRILOADS WITHIN THE PEDESTRIAN ACCESS ROUTE SHALL HAVE A SOLID CONTINUOUS BOTTOM RAIL BETWEEN 4" AND 12" IN HEIGHT.

CROSSWALK CLOSURE

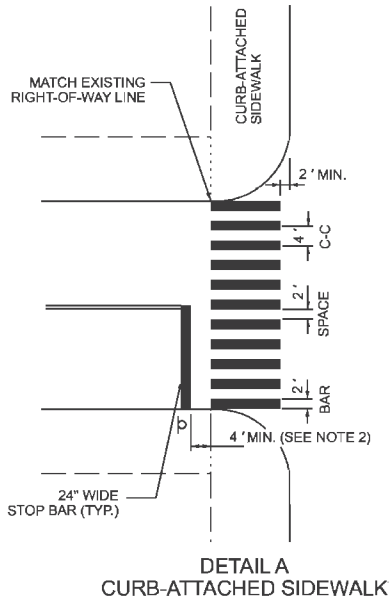


SYMBOLS

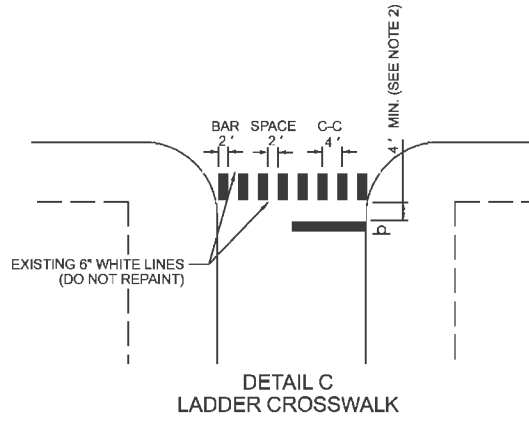
- WORK AREA
- CONCRETE BARRIER WALL MUST BE INSTALLED WITH TERMINAL SECTION.
- SIGN ON PORTABLE OR PERMANENT SUPPORT.
- BARRICADE OR DRUM WITH FLASHING LIGHT.

* OMIT WHENEVER DUPLICATED BY ROAD WORK TRAFFIC CONTROL

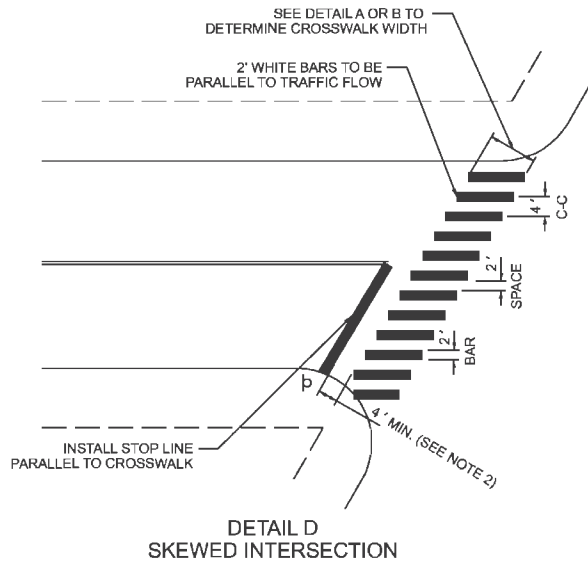
SECTION 7: PAVEMENT MARKINGS



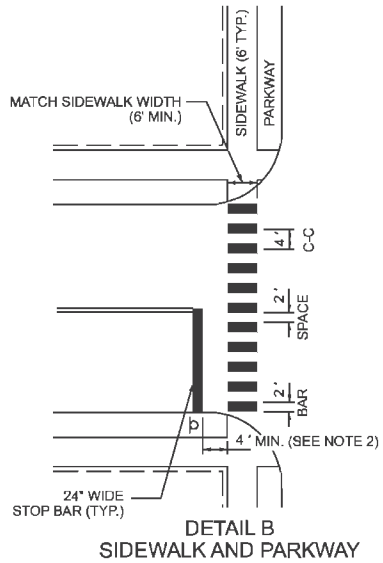
DETAIL A
CURB-ATTACHED SIDEWALK



DETAIL C
LADDER CROSSWALK



DETAIL D
SKEWED INTERSECTION



DETAIL B
SIDEWALK AND PARKWAY

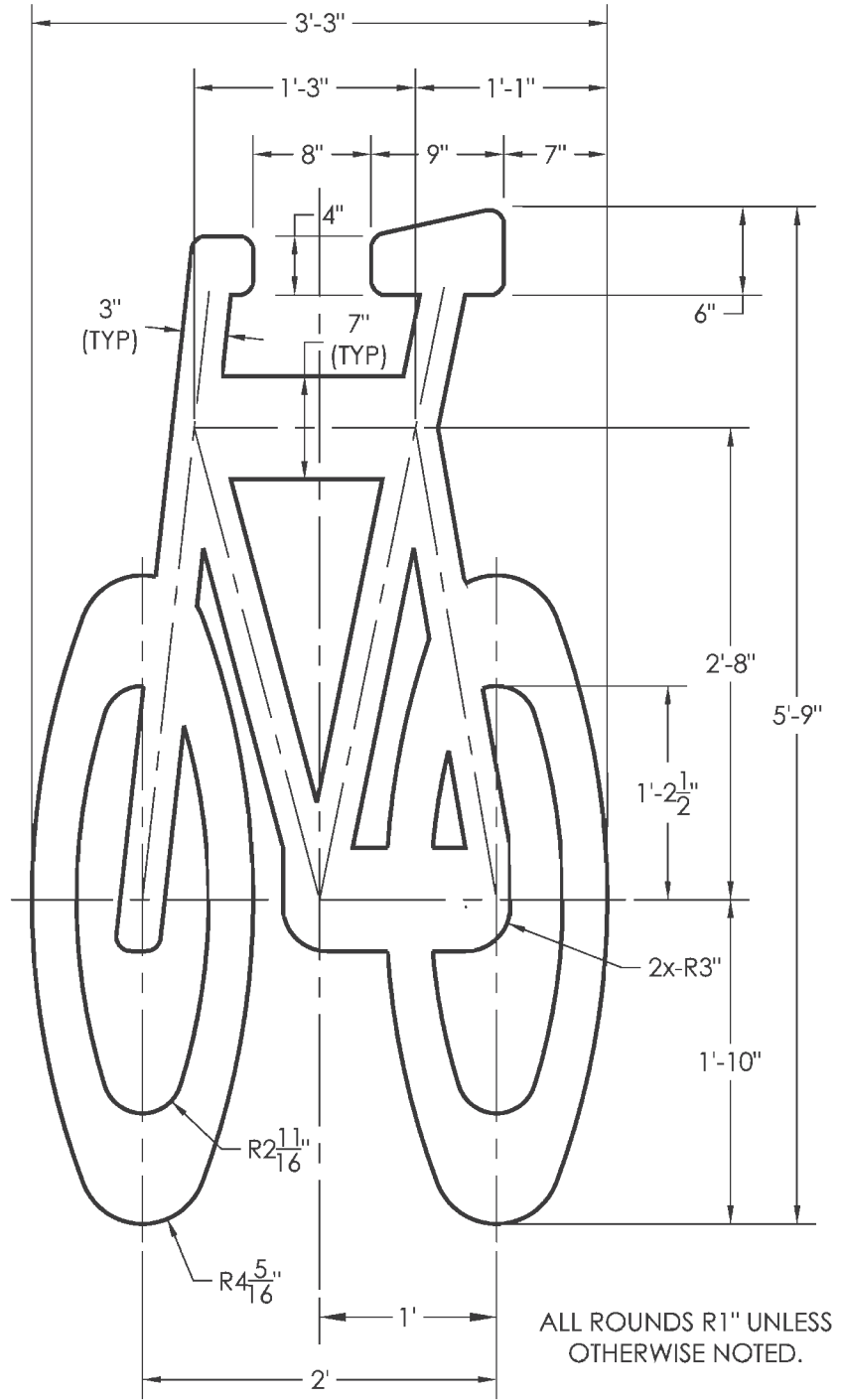
GENERAL NOTES:

- DO NOT INSTALL NEW OR REPLACE EXISTING CROSSWALKS ACROSS STREETS WITH 4 OR MORE LANES AT UNCONTROLLED (NO TRAFFIC SIGNAL OR ALL-WAY STOP) LOCATIONS WITHOUT COORDINATING WITH CDOT TRAFFIC ENGINEERS.
- STOP LINE SHOULD BE PLACED A MINIMUM OF 4' IN ADVANCE OF A CROSSWALK. AT THE ENGINEER'S DISCRETION, THE STOP BAR MAY BE MORE THAN 4' FROM THE CROSSWALK TO AVOID ENCROACHMENT BY TURNING VEHICLES.



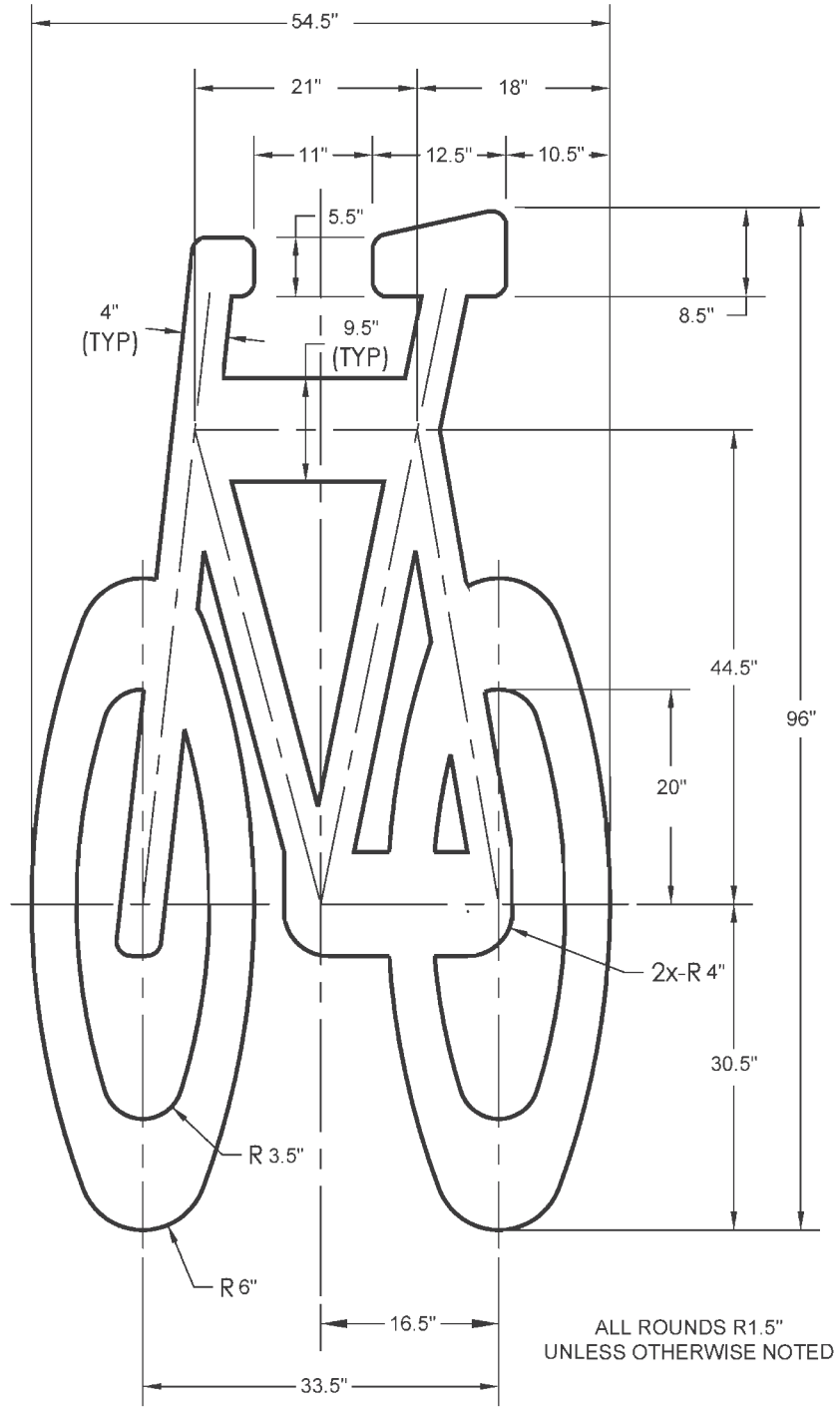
DATE	REVISION	CITY OF CHICAGO		
		CROSSWALK MARKING DETAIL		
		DATE	SHEET A-7-1	DRAWN BY
		06/25/12		CDOT

AREA = 8.36 ft²



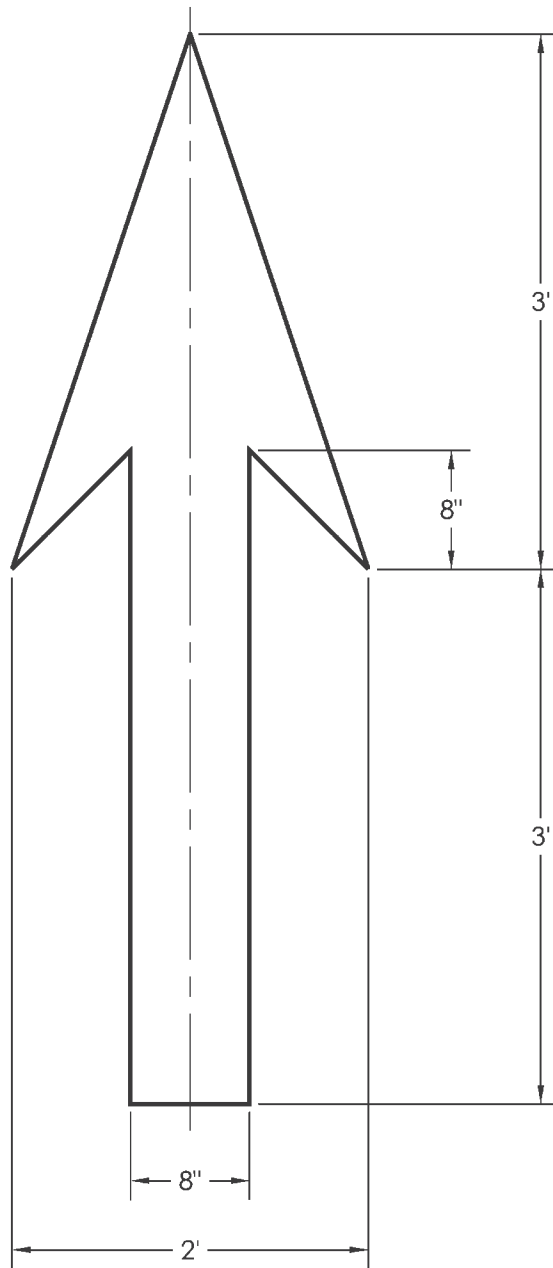
DATE	REVISION	CITY OF CHICAGO		
		6' BIKE SYMBOL		
		DATE	SHEET A-7-2	DRAWN BY
		06/25/12		CDOT

AREA = 16.2 ft²

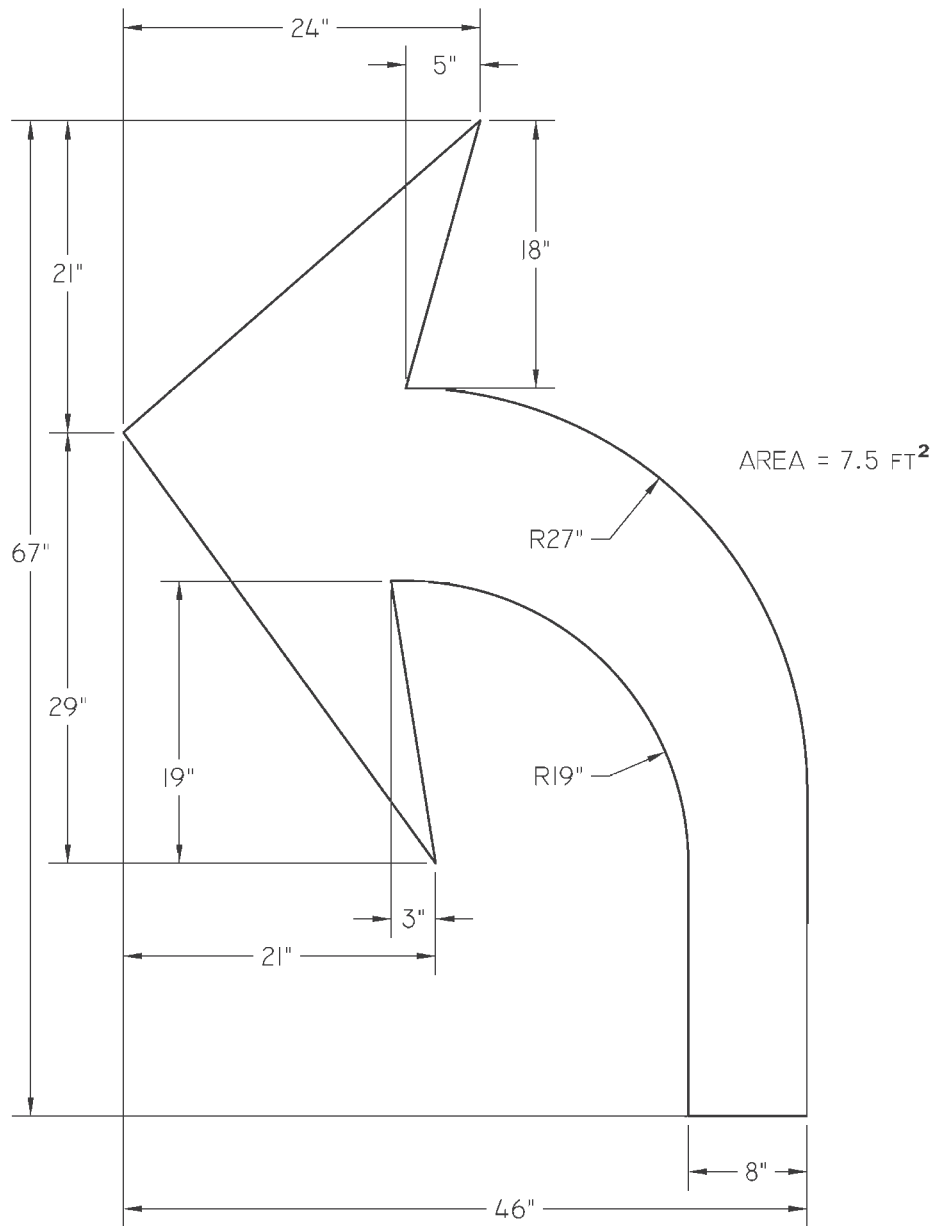


DATE	REVISION	CITY OF CHICAGO		
		8' BIKE SYMBOL		
		DATE	SHEET A-7-3	DRAWN BY
		06/25/12		CDOT


AREA = 4.56 ft²



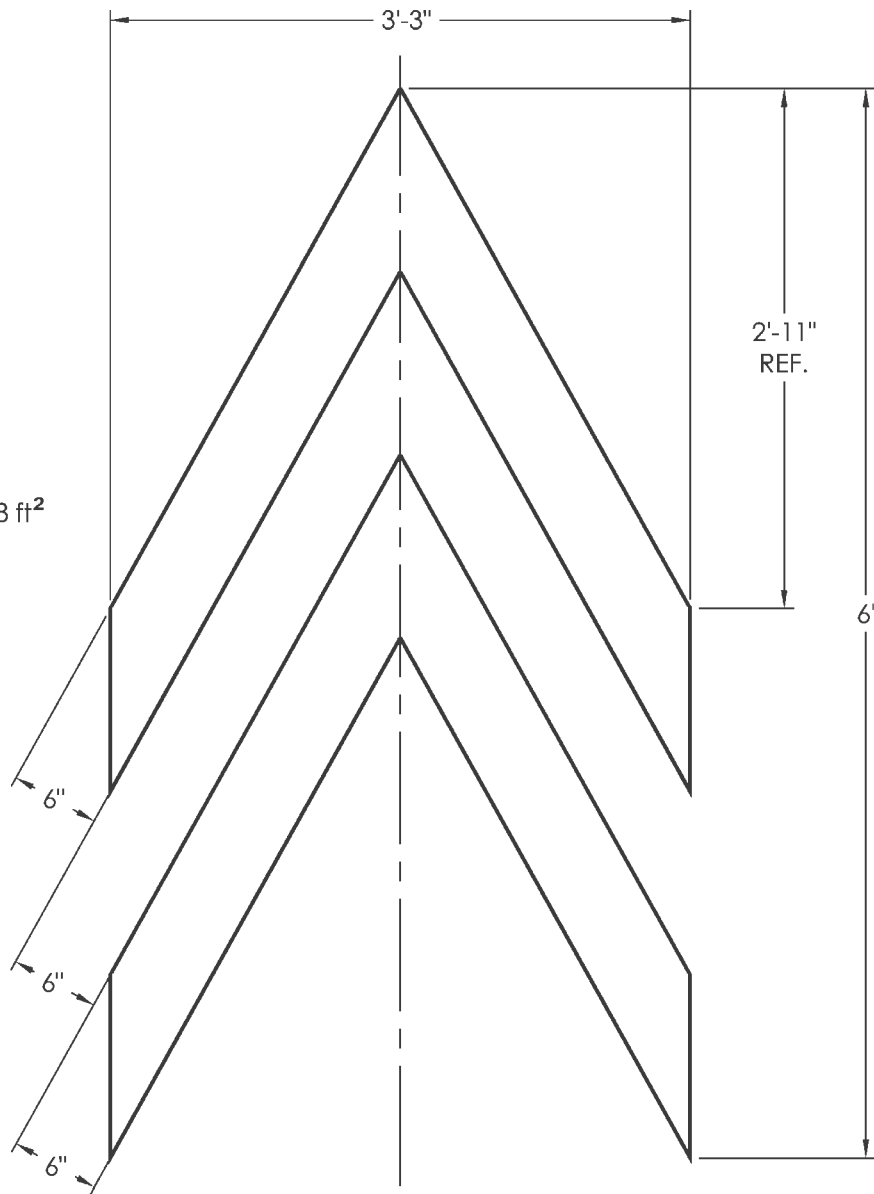
DATE	REVISION	CITY OF CHICAGO		
		BIKE ARROW		
		DATE	SHEET A-7-4	DRAWN BY
		06/25/12		CDOT



NOTE:
 THIS SPECIFICATION REPRESENTS THE BIKE LEFT
 TURN ARROW. FOR A BIKE RIGHT TURN ARROW,
 USE A MIRROR IMAGE.

	DATE	REVISION	CITY OF CHICAGO	
			BIKE TURN ARROW	
			DATE	DRAWN BY
			06/25/12	SHEET A-7-5 CDOT

AREA = 6.68 ft²



DATE	REVISION	CITY OF CHICAGO		
		BIKE CHEVRON		
		DATE	SHEET A-7-6	DRAWN BY
		06/25/12		CDOT