



New Arrivals Community Briefing
April 17th, 2024

The Chicago region has welcomed nearly 39,000 asylum seekers and other migrants from the southern border



602 buses have arrived since August 2022
285 buses arrived at suburban communities (*275 on 4/12*)



4,737 individuals arrived at O'Hare & Midway



18 shelters in operation across the city



9,044 current shelter residents (*9,344 on 4/12*)





An estimated 39,388+ asylum seekers have arrived in Chicago since 31 AUG 2022



Total
863

Resettlement
336

Outmigration
209

Other Exits
318

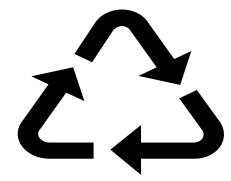
Onward Movement
101

people exiting our system in the last 7 days.



60 Day Exits
137

people that have exited since 16 MAR 2024



60 Day Returns to LZ

137 / 88

Total # exits vs. Total # people returning to Shelter

The Resurrection Project and the State – in collaboration with City and Federal governments, and others – are coordinating efforts to **centralize and expedite application** preparation via large-scale workshops for new arrivals who are eligible for Temporary Protected Status (TPS) and/or Employment Authorization Documents (EAD).

<i>Phase 1</i>	<i>Phase 2</i>	<i>Phase 3</i>
Focus: City-run shelters. Began on Nov 9th, 2023.	Focus: Other shelters and those in ASERAP housing. Beginning Feb 20th, 2024.	Focus: New arrivals not in shelters or ASERAP housing.

5,925 (373+) Applications Submitted to USCIS (Apr 1)	
EAD: 2,146	TPS: 3,779

Approved Documents Received (Apr 1)	
Work Permits received: 2,404 (+0)	Social Security Cards received: 2,421

TPS documents could take upwards of 6 months to be adjudicated.

Measles Dashboard

Data last updated 4/15/2024

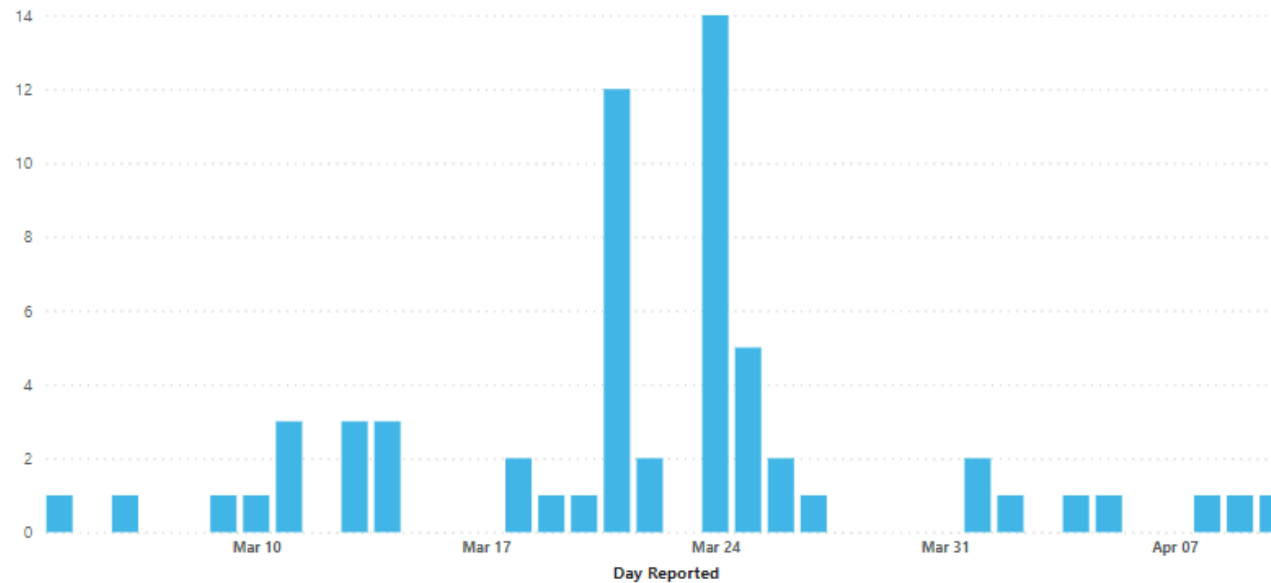
Data are updated daily at 1 p.m. All data are provisional and subject to change.

Chicago Measles Outbreak 2024

Cases This Year
61

Cases This Week: 04/14 - 04/20
0

Cases by Date Reported



Cases by Age Group

Age Group	Count	%
0 - 4 years	33	54%
5 - 17 years	7	11%
18 - 49 years	19	31%
50+ years	2	3%

- **No new Chicago cases** reported over the weekend.
- **Over 13,600 MMR vaccines** administered since the first case of measles was identified in Chicago in March.
- CDPH has hosted over **100 MMR vaccine events** at new arrival shelters since the beginning of March and continues to provide MMR vaccinations at the LZ.
- As of 4/15/24 at 10 am there are 57 Halsted-associated cases
 - 39 children and 18 adults
- 4 cases not associated with Halsted.

Measles Vaccination Dashboard

The most effective way to prevent measles is through vaccination. There have been ongoing efforts to increase vaccination coverage in Chicago residents since the outbreak was detected.

Data last updated 4/11/2024. Counts include vaccinations administered through 4/8/2024 to account for reporting lags. Data are updated Tuesdays and Thursdays at 1 p.m. All data are provisional and subject to change.

Measles-Containing Vaccines Administered to Chicago Residents

[Click here to view vaccines administered in 2023 compared to 2024](#)

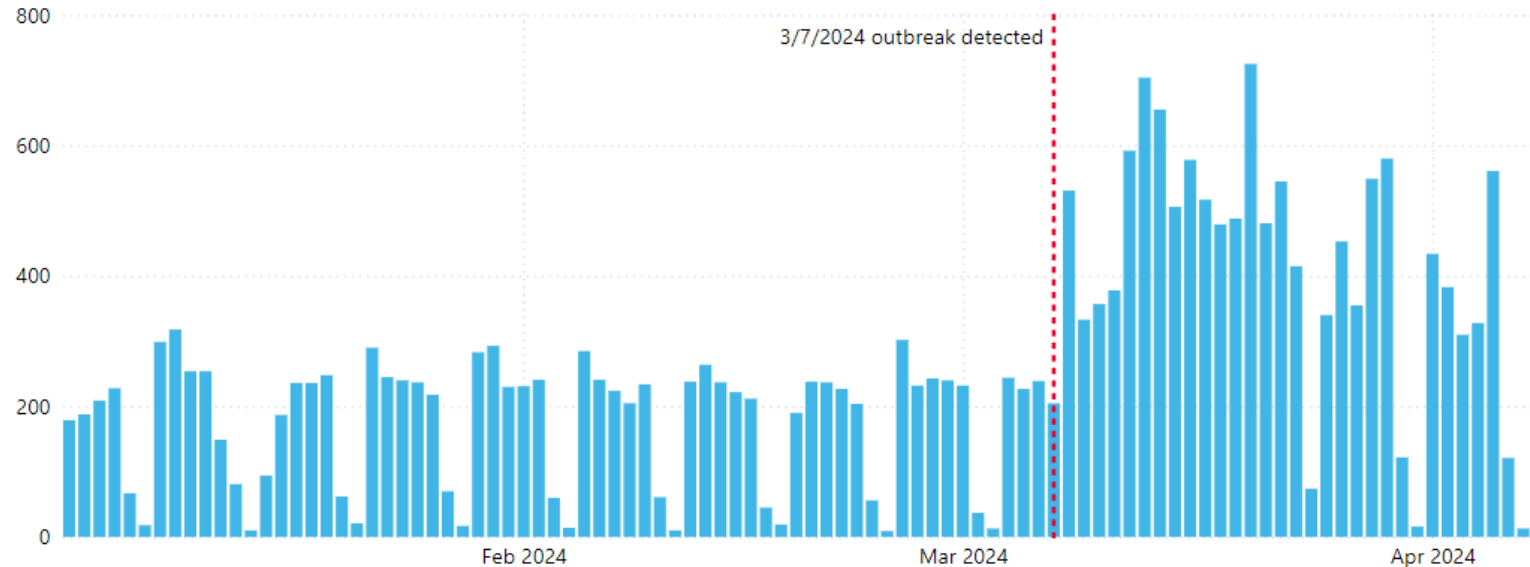
Doses Administered since 3/7/2024

13,622

Doses Administered Last Week (3/31/2024 - 4/6/2024)

2,153

Vaccinations Administered by Day



- Cook County Health (CHH) will **perform urgent medical care screening and MMR/VZV vaccinations** at Landing Zone.
- CCH to **transport** new arrivals from **Landing Zone to Belmont Cragin for their comprehensive medical evaluation** and additional vaccines.
- CCH to provide healthcare teams for all city run new arrivals shelter system.
- CDPH will coordinate coverage gaps at landing zone and shelters for other public health services as needed



- All Park Districts have been decompressed.
 - Leone Park Boathouse
 - Piotrowski Park
 - Broadway Armory
 - Gage Park
 - Brands Park
- Shelter residents transported to new shelter locations, prioritizing relocation to the shelters closest to them.
- Children are expected to remain in the same school during and after the transition. CPS will provide support.
- Park facilities will be restored so that park programming and other park operations can resume in time for summer.



- DFSS seeks applications for the operation of emergency shelters for new arrivals.
- This **RFP is an update to the initial RFP #9335 issued in August 2023**, and includes sites for which DFSS either made no award under #9335 or which have been newly added to the New Arrivals shelter system since the prior RFP release.
- Operate shelters at any of the **six specific** City-owned or City-leased facilities.
- Respondents may apply to operate more than one shelter facility.
- Applications are **due on Tuesday, May 14th, 2024 at 12:00pm, Noon CST**.
- A Pre-Proposal Webinar will be held on **Friday, April 19th, 2024 at 1:00pm – 3:00pm**.

- The Committee on Budget and Government Operations **voted 20-8 Monday in favor of the appropriation to move the \$70 million ask to City Council for a vote.**
 - City Council votes **TODAY**
- This is a new funding request, **will come from the City's reserve funds. This funding is part of the larger City, County, and State strategic plan**
 - The State is pledging \$182 million as part of Governor's proposed budget for FY 2025
 - Cook County is pledging \$70 million for FY 2025
- Funding request is based on arrival patterns over the past two years, to support City shelter operations should there be an increase in New Arrivals sent by Texas Governor Greg Abbott.





**CITYWIDE
CAREER FAIR**

Thursday, April 25, 2024
10:00 AM-2:00 PM

Malcolm X College Gymnasium

Employers will be available to share employment opportunities

Open Registration

Doors open at 10:00 AM

Bring updated resumes and be prepared to complete online applications

For assistance with resumes and interviewing skills, visit your neighborhood American Job Center, levelupajc.org

- **Open to all residents** including new arrivals
- Hosted by Clerk's Office, Cook County, COPA, CTA, CCC, The Partnership, Skills for Chicagoland's Future, and the Chicago Is With You Taskforce
- Complete List of Employers in Attendance: <https://www.chicityclerk.com/citywidecareerfair24>



OFFICE OF THE CITY CLERK
ANNA M. VALENCIA
CITY OF CHICAGO



CITY COLLEGES
OF CHICAGO



CHICAGO COOK
WORKFORCE PARTNERSHIP
A proud partner of the levelupajc.org network



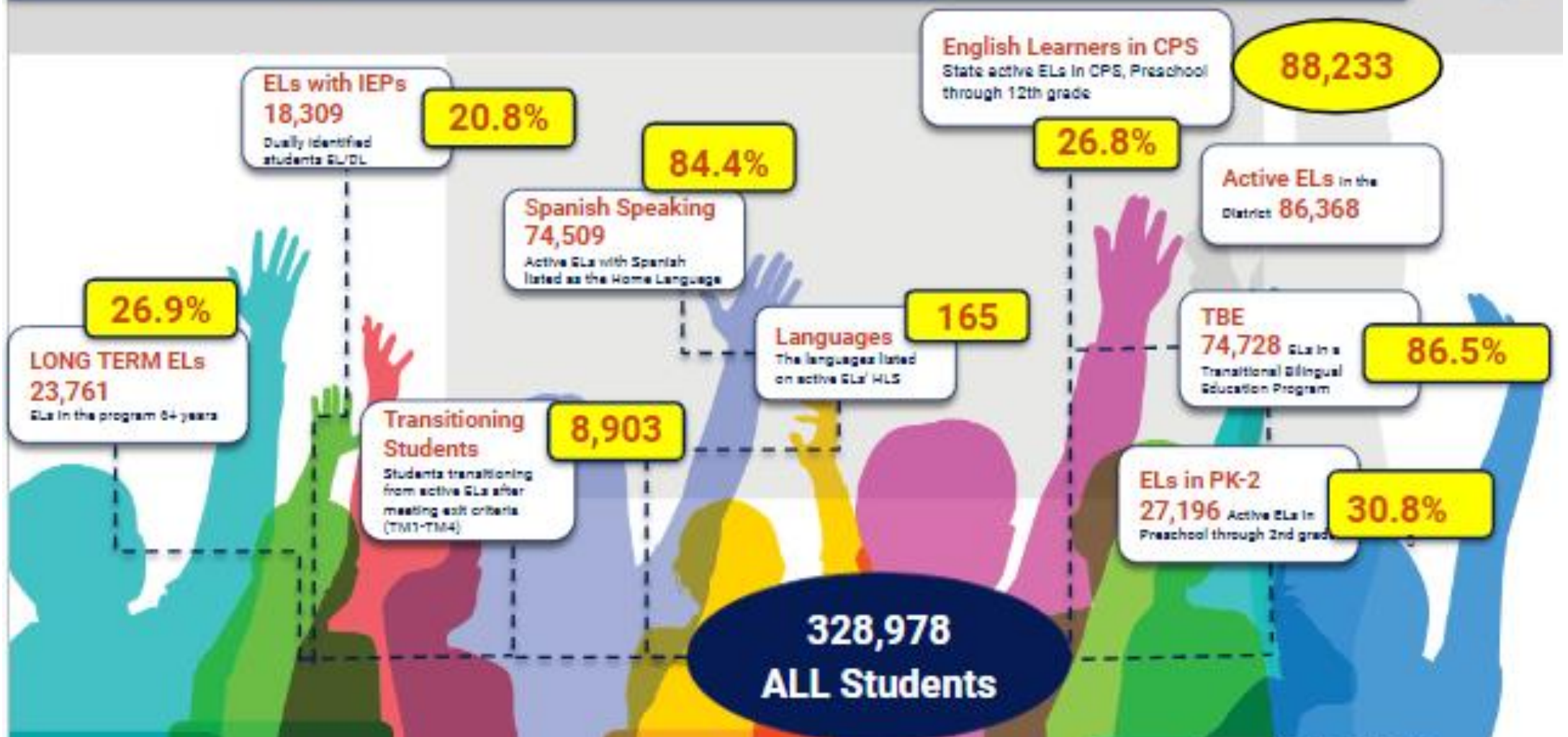


Chicago
Public
Schools

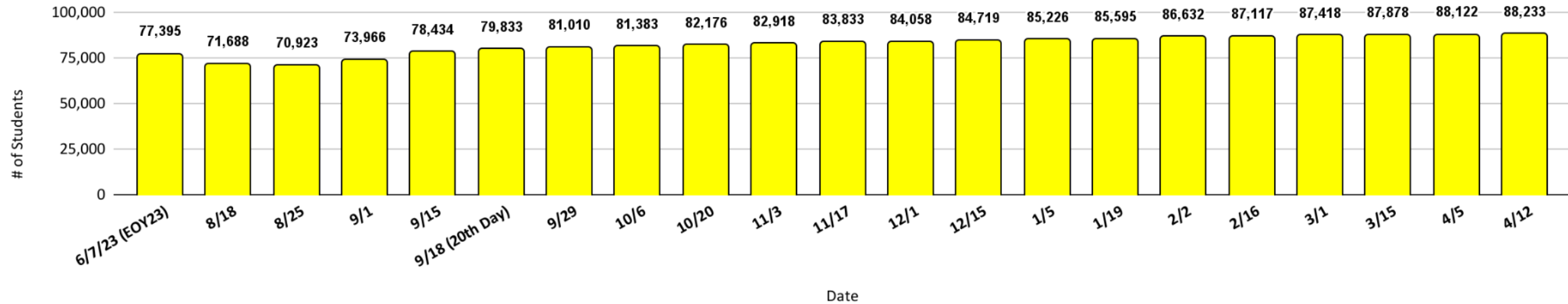
Newcomer Enrollment Data

Updated: April 17, 2024

Multilingual Learners in CPS

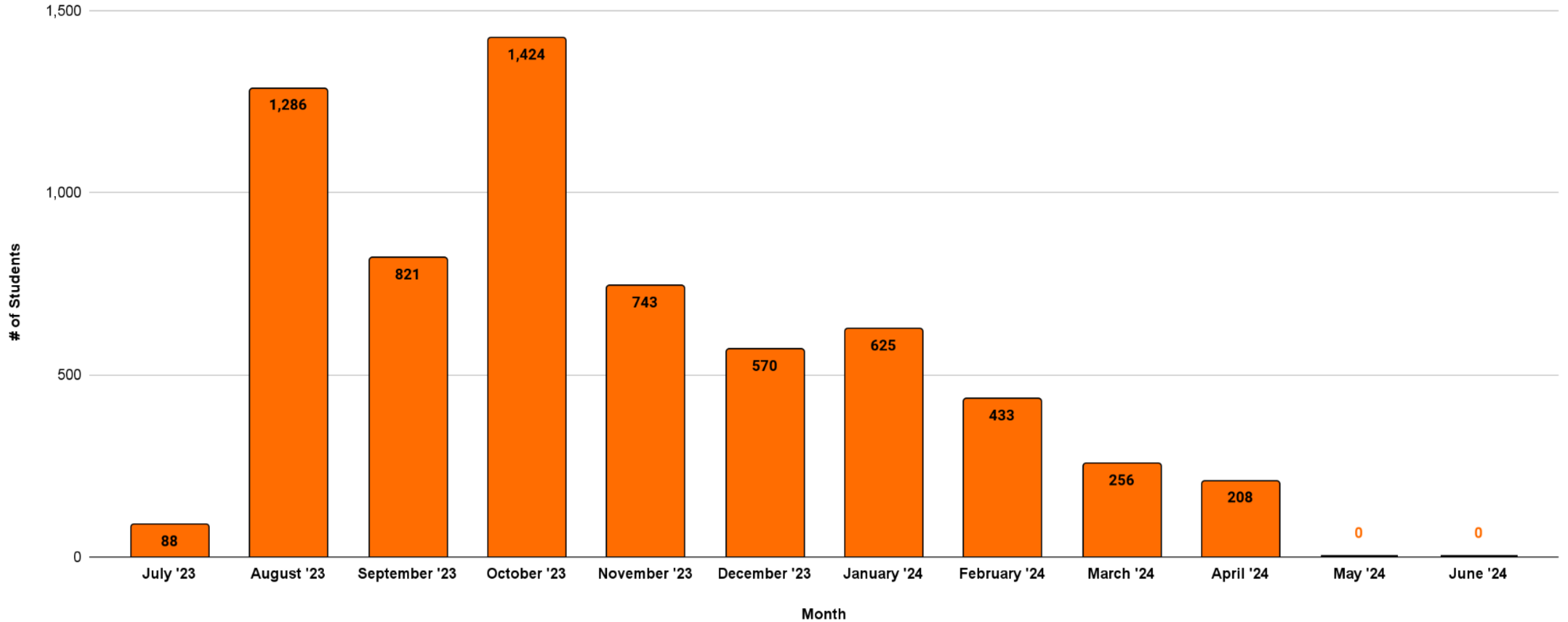


SY24 Rolling Count of State Active ELs Over Time

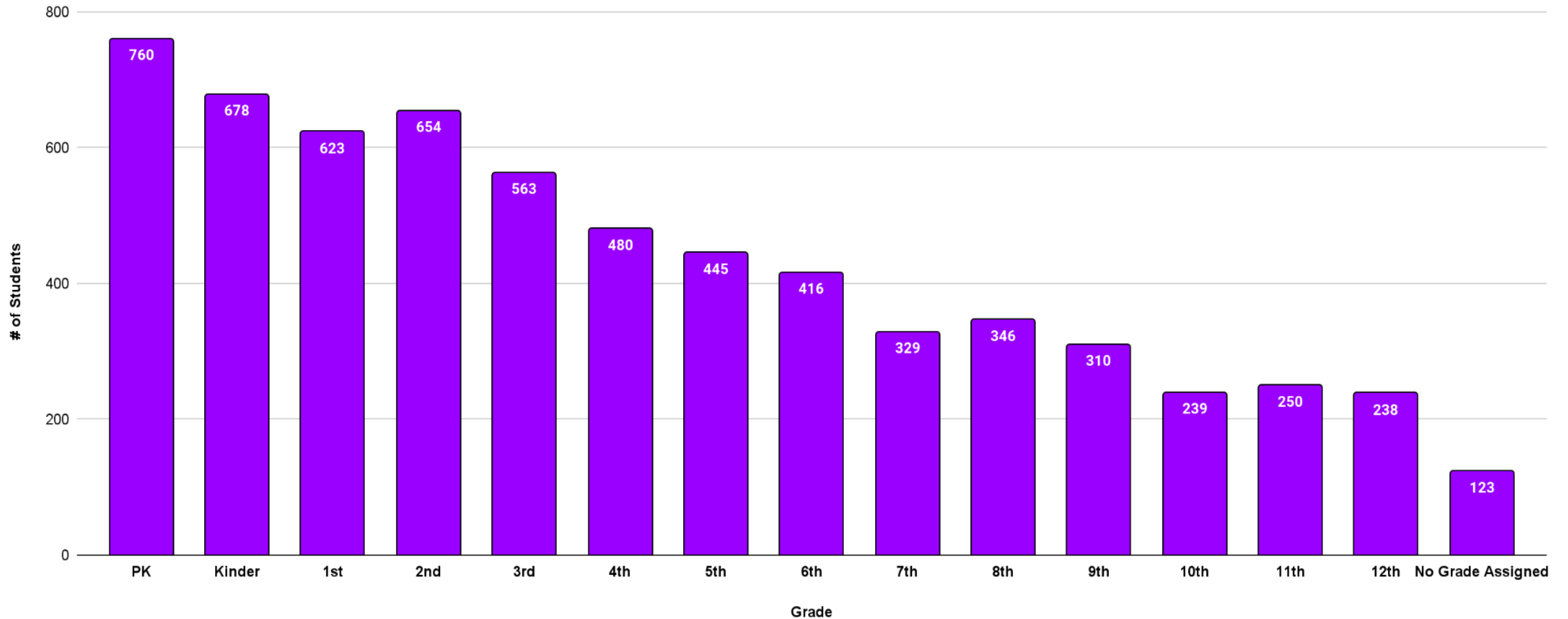


The number of students who meet the 3 newcomer criteria (STLS status, entered after Aug 2022, home language is not English) is **17,435** as of 4-15-2024.

Newcomers Seeking Enrollment: Arrivals per Month in SY24



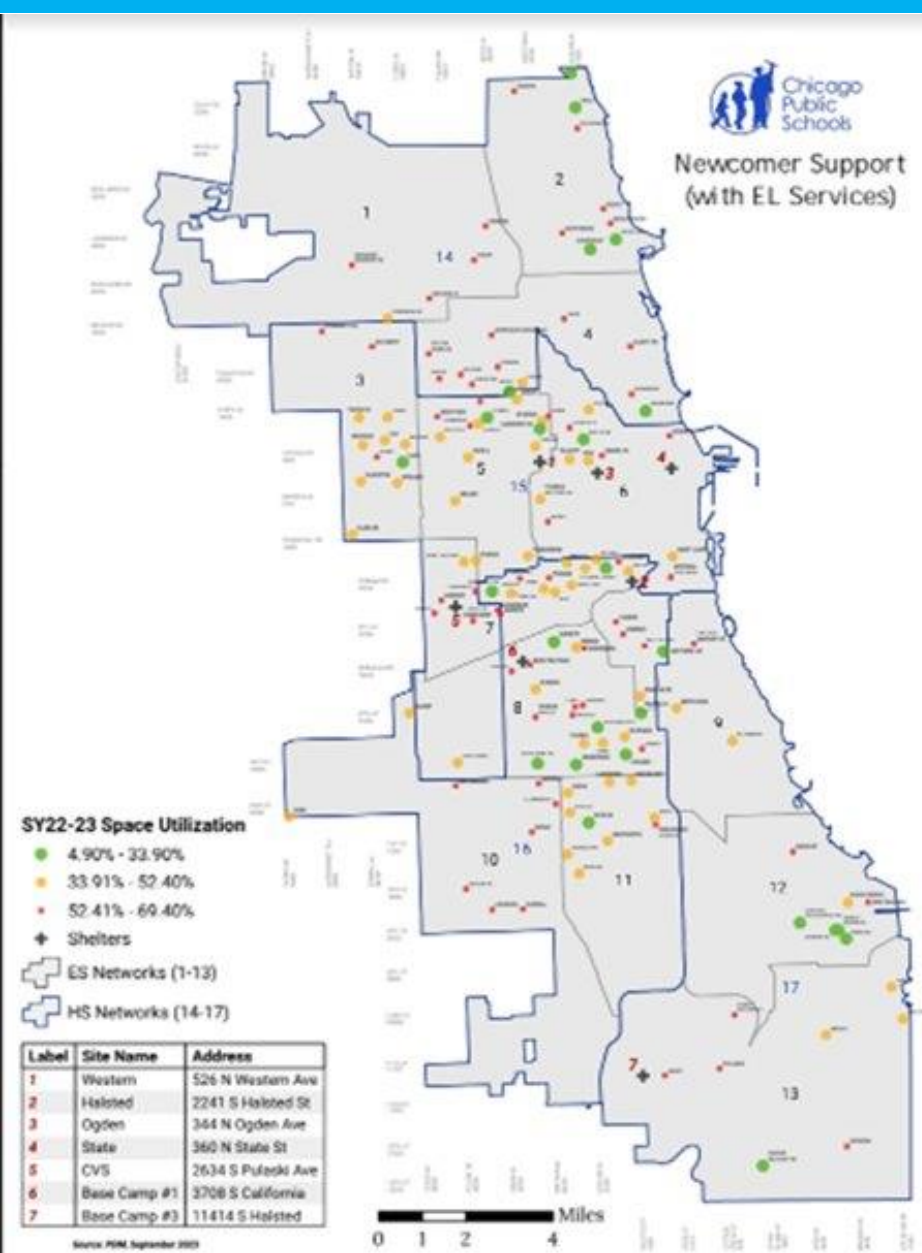
SY24 Newcomers Seeking Enrollment Count by Grade Level



Since July 1, 2023, CPS has received names of 6,454 school aged children residing in shelters. DFSS/OLCE/CTU in coordination with 226 schools, have worked to enroll these students.

Newcomer #s by School	Total # of Schools	# of Elem Schools	# of High Schools
0-10	100	73	27
11-20	45	37	8
21-30	27	20	7
31-40	19	15	4
41-50	4	4	0
51+	31	26	5
TOTAL	226	175	51

Available Seats with EL Support



ES Seats WITH EL Supports										
Network	K	1	2	3	4	5	6	7	8	Total
Network 1	208	220	163	184	258	249	216	248	236	1,982
Network 2	8	33	15	6	25	10	18	28	18	161
Network 3	200	154	182	213	248	231	204	253	224	1,909
Network 4	77	89	74	61	114	76	78	69	43	681
Network 5	7	14	19	27	16	20	8	21	9	141
Network 6	32	12	29	15	10	6	11	22	0	137
Network 7	22	41	8	41	46	47	41	32	3	281
Network 8	71	81	81	63	85	47	46	61	32	567
Network 9	36	42	41	45	33	44	57	33	40	371
Network 10	119	96	90	75	62	103	76	57	47	725
Network 11	23	29	33	15	29	8	29	20	39	225
Network 12	2	9	11	3	9	13	7	11	11	76
Network 13	46	35	53	61	44	60	57	46	26	428
ISP	92	106	91	70	75	60	90	79	66	729
Total	943	961	890	879	1,054	974	938	980	794	8,413

Available Seats across the district with EL Support 8,413

- 1. CPS looking for certified bilingual instructors on the north side of Chicago?** We are constantly seeking to attract ESL/Bilingual certified educators for all our schools the district.
- 2. What ESL curriculum has CPS adopted?** CPS does not adopt a specific ESL curriculum because research-based best practices suggest that *ESL instruction should be integrated into the content schools are already using*. This approach allows students to learn language in the context of what they are studying, which is considered more effective than a separate ESL curriculum. Professional development is available to teachers to help them effectively integrate ESL instruction across content areas. This includes support through planning tools and ESL Resource Frameworks aligned to common core standards.
- 3. What curricula has it adopted for subject matter instruction in Spanish for students for whom that is being provided?** The district's Skyline curriculum offers a Spanish version for Social Studies, Math, and Science. Many schools that have not adopted Skyline may have purchased Spanish math, science, and social studies curriculums. OLCE does not mandate a specific curriculum. Please check with your local school.

