

Oakwood LakePark 6

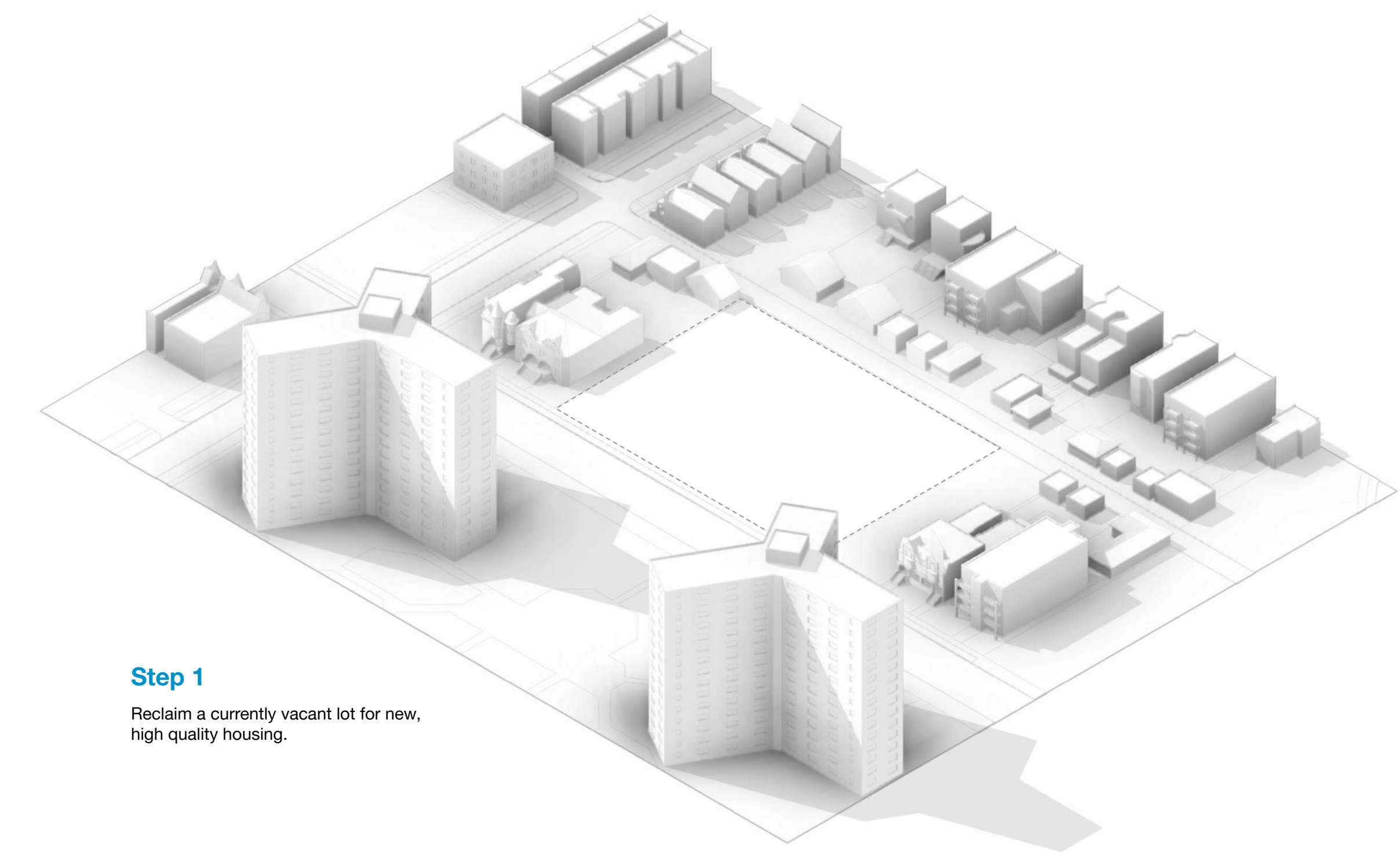
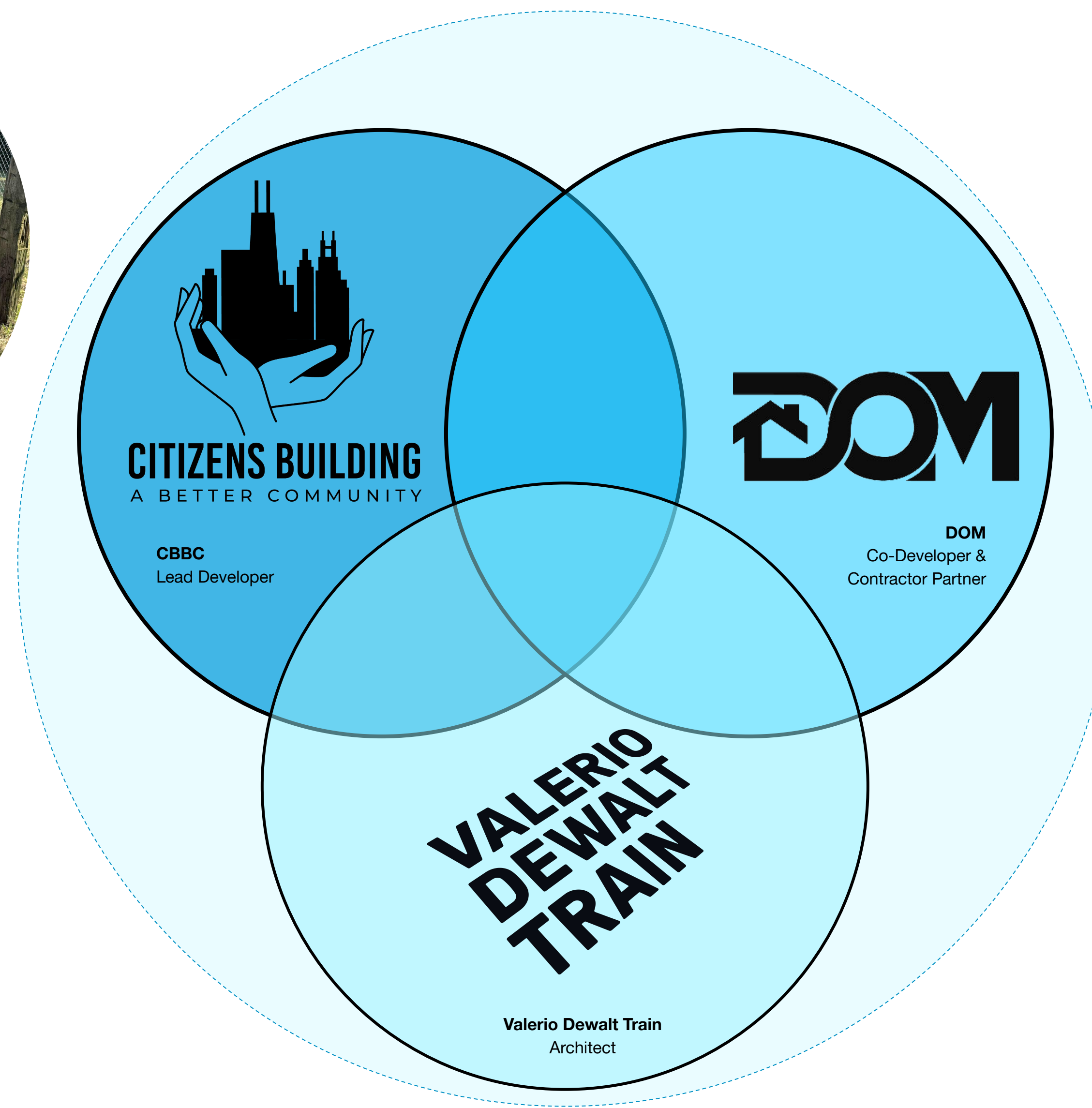
site number 6

Our team is rooted in community development

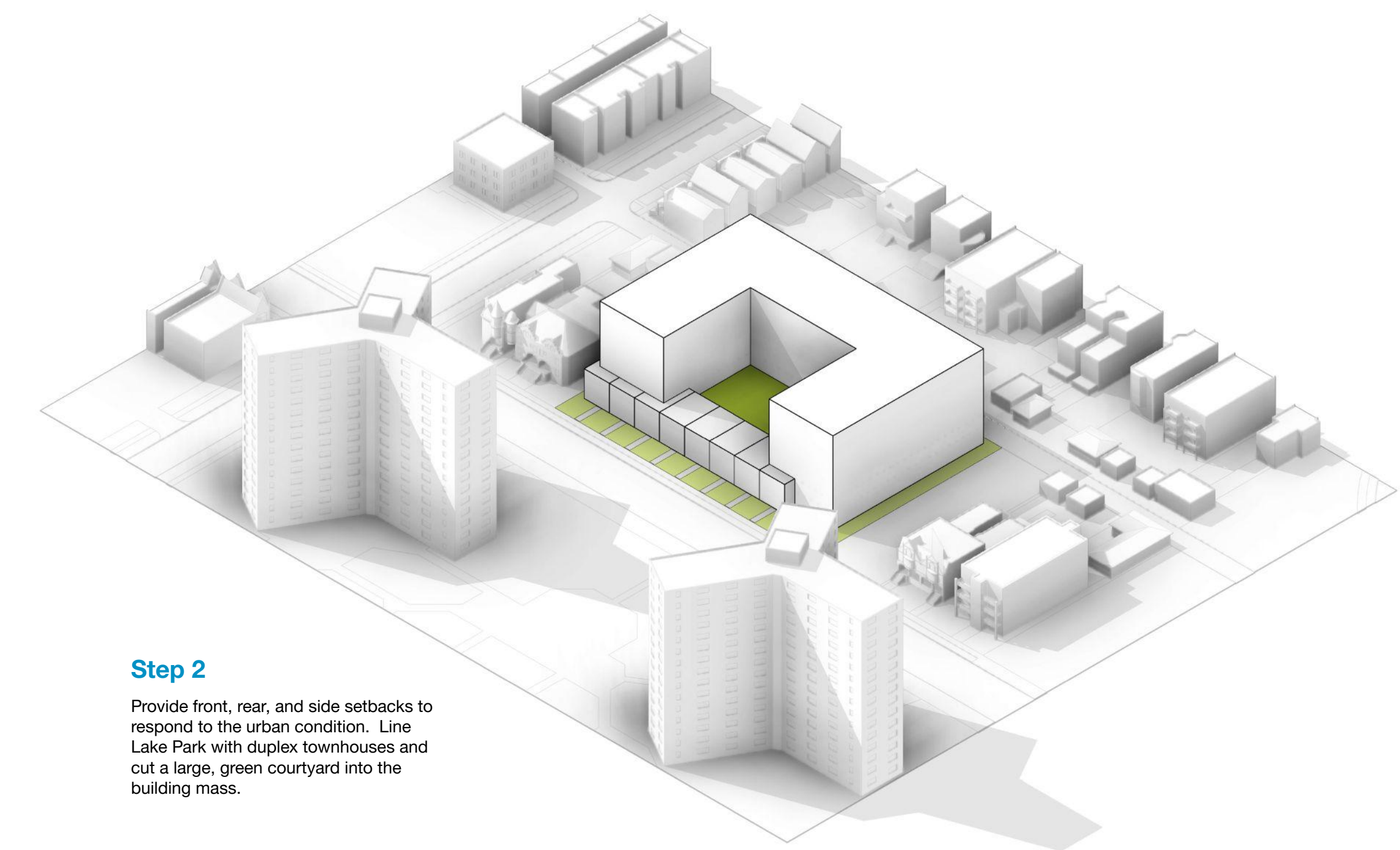
Our mission is to build better communities by galvanizing community resources, residents, contractors, and developers. Our vision is to provide affordable housing to working folks in Chicago's neighborhoods, including Bronzeville. We understand first-hand the issues and disparities faced by residents in this neighborhood.

What unites us as a team is both a willingness to listen to the many residents we have engaged with, and a shared passion for the positive impacts that good design and thoughtful development can bring. We approach this work out of respect for the people of Bronzeville, recognizing that the best way forward is through collaboration with those who call it home.

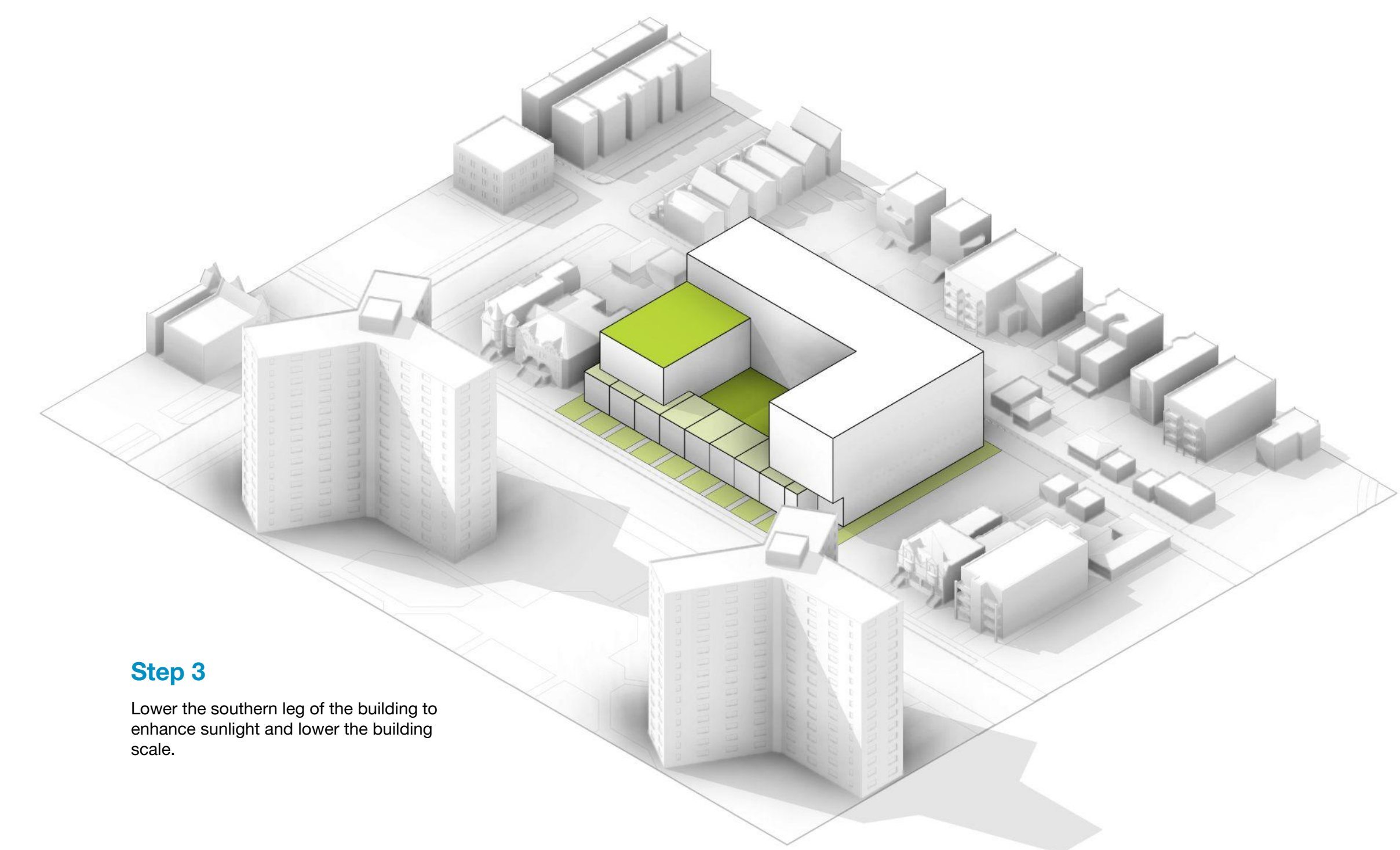
And we believe that the greatest impact, inspiration, and transformation, will come from a team like ours, **building—literally—from the ground-up.**



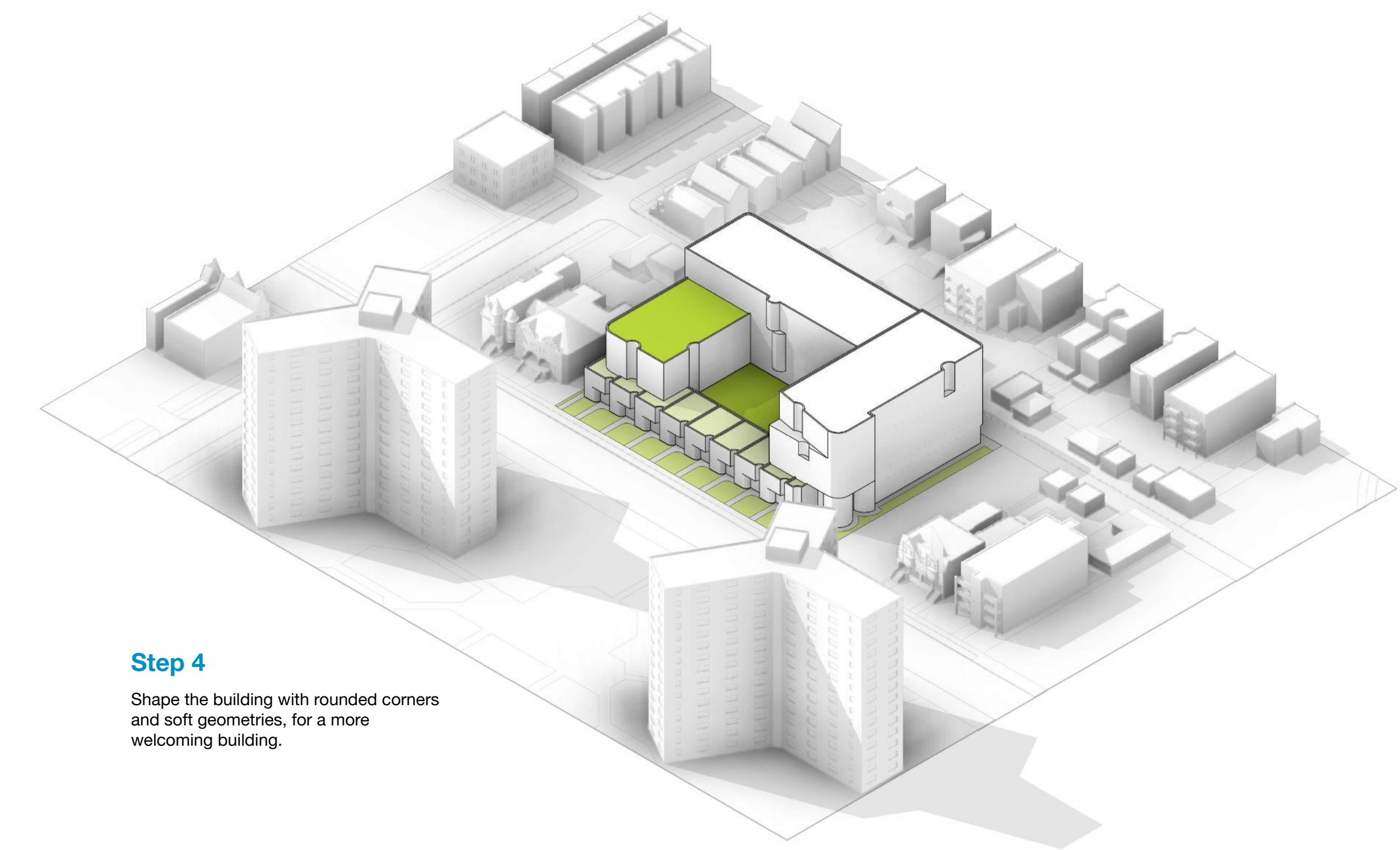
Step 1
Reclaim a currently vacant lot for new, high quality housing.



Step 2
Provide front, rear, and side setbacks to respond to the urban condition. Line Lake Park with duplex townhouses and cut a large, green courtyard into the building mass.



Step 3
Lower the southern leg of the building to enhance sunlight and lower the building scale.



Step 4
Shape the building with rounded corners and soft geometries, for a more welcoming building.



Inspired by the Community

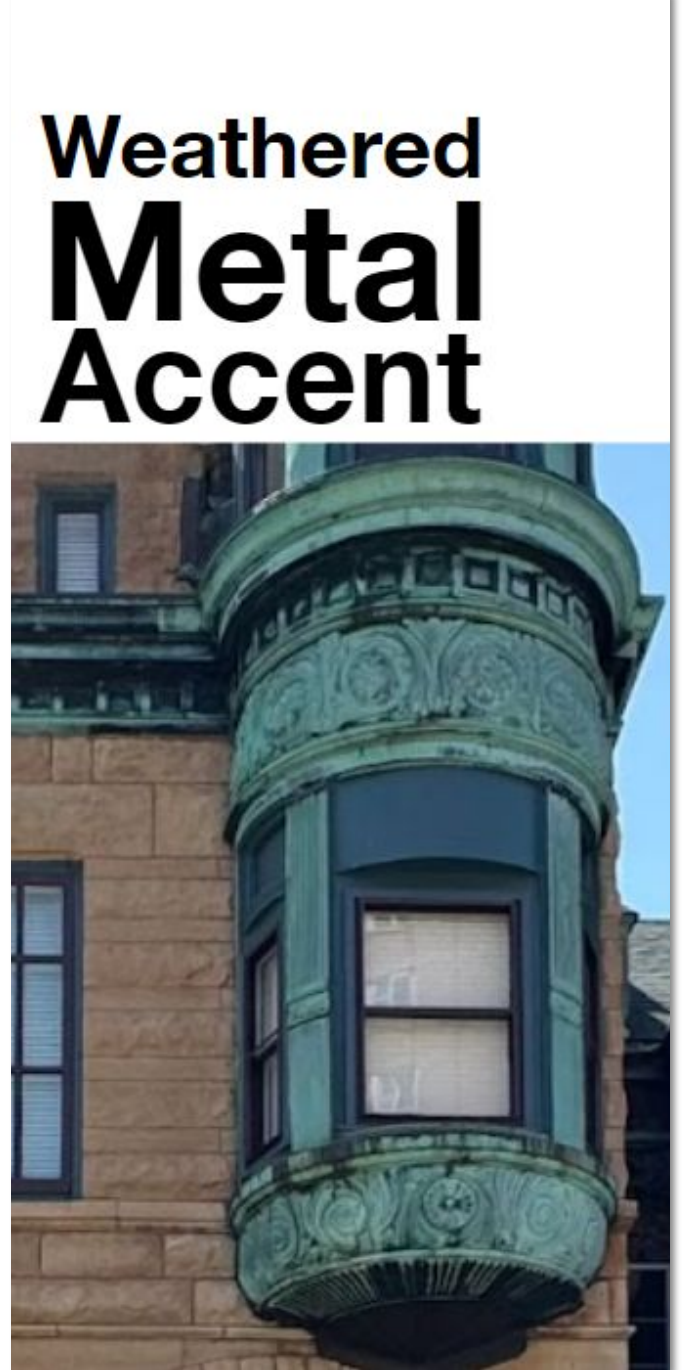


Rounded Corners

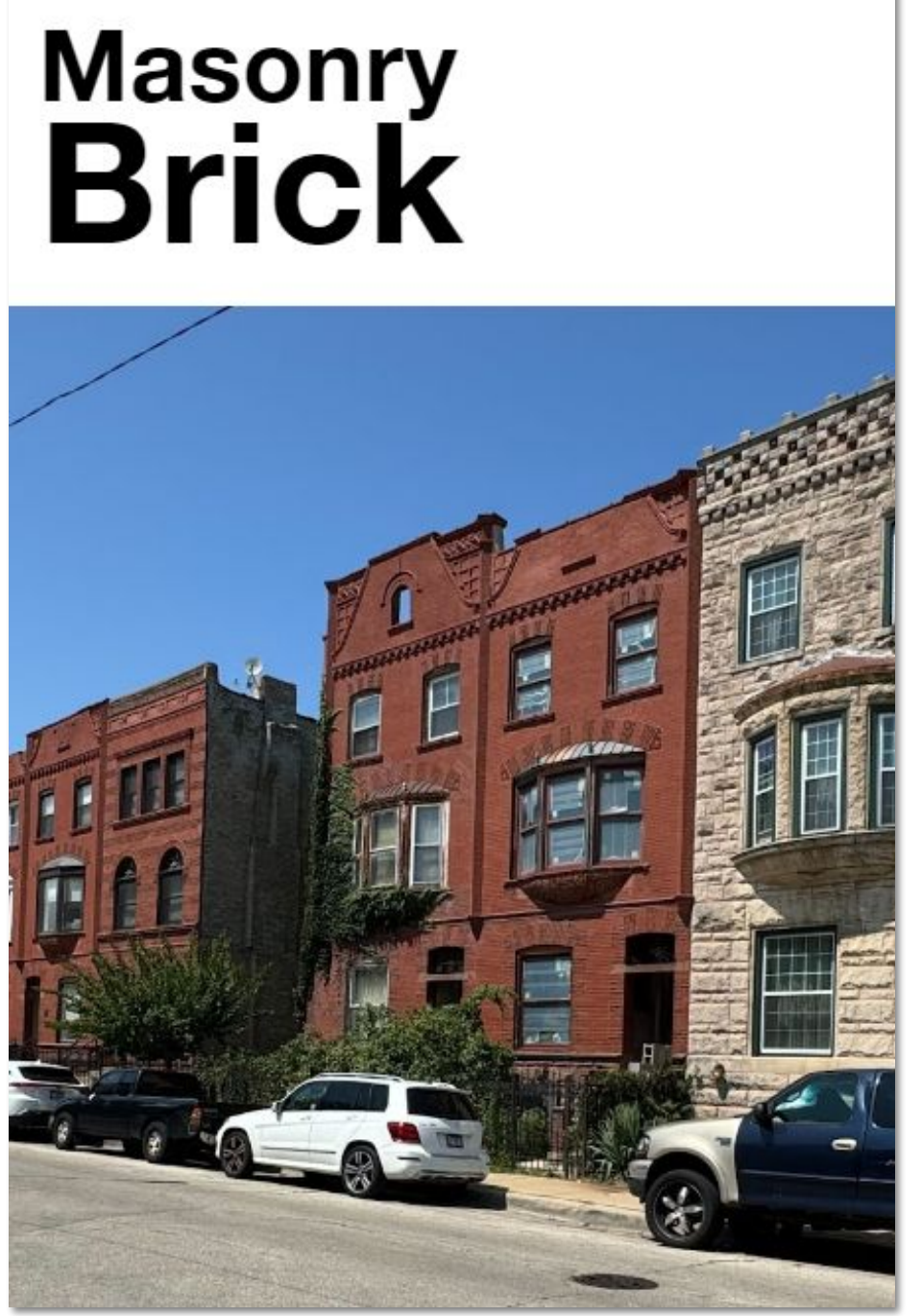


Upper Lower

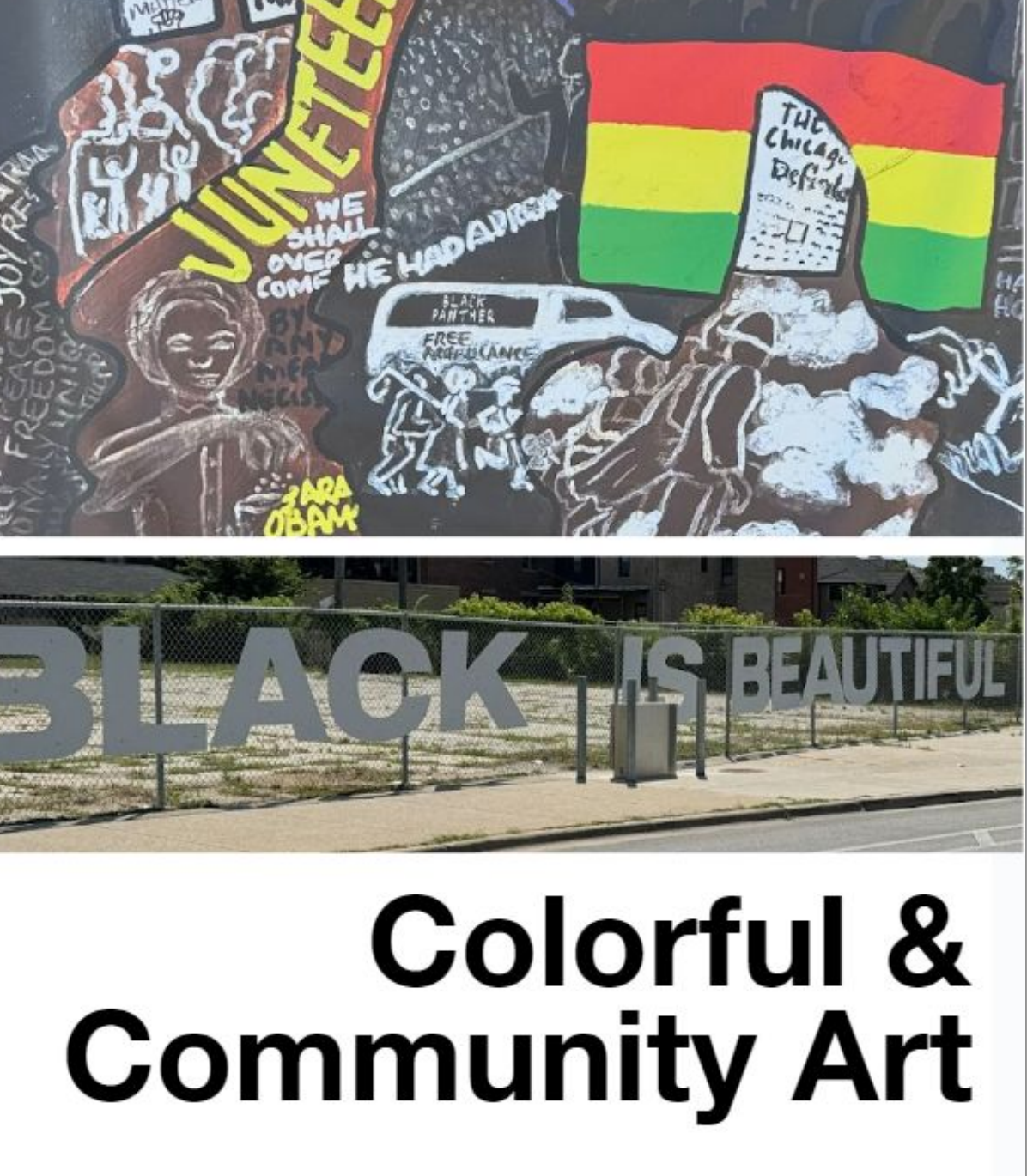
Rhythm of Front Stoops



Weathered Metal Accent



Masonry Brick



Colorful & Community Art



Level 6-7



Level 3-5



Level 2



Level 1

- Key**
- Lobby/Amenity
 - Parking
 - Mech / BOH
 - 1 BR Unit
 - 2 BR Unit
 - 3 BR Duplex
 - Green

Welcoming, Affordable, Authentic, & Green

A design concept that is inspired by the unique architectural patterns of Bronzeville.



A design that is **dynamic & varied**

with masonry on the bottom, a lighter metal skin above, and accents of weathered copper connect the design to its context.



A design where **lush, green, and biophilic plantings are integrated.**



An architecture inspired by the community, with rounded corners, a rhythm of front stoops, and authentic materials.

A development that is **curved & welcoming**

The curved corner and the entry lobby includes a corrugated and perforated metal screen that invite ivy to grow up the building. It's a soft, green building that is very welcoming.

With a 10-ft set back beginning at level 3, the 2-story duplex townhouses dominate the street edge and align with the historic properties north and south.



welcome home.

Our vision for Oakwood and Lake Park is rooted in the belief that "Health = Wealth." This is more than just housing - it's an opportunity to transform and uplift a community. Wealth isn't only measured in dollars but in the quality of life, in the ability to breathe clean air, in the security of having a place to live that protects its inhabitants. This development is a step toward building a healthier, more prosperous future for the people of Oakland.

1. **Healthy Homes for All**
2. **Economic Empowerment Through Affordability**
3. **Employment Opportunities and Local Partnerships**
4. **Investment in Local Services and Resources**
5. **Safety as a Pillar of Community Wealth**
6. **Supporting Healthy Lifestyles**