



Pullman/Roseland/West Pullman Neighborhood Roundtable

September 28, 2021



Agenda

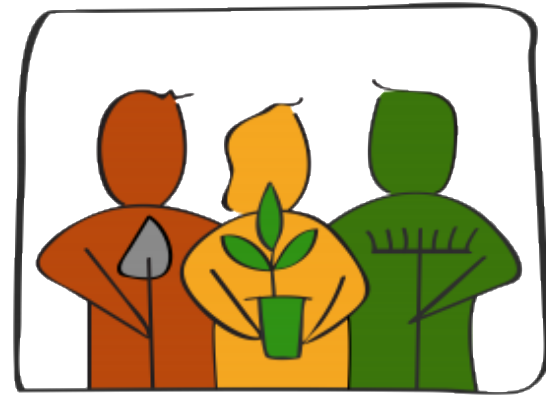
- 01 Welcome**
- 02 Mayor's Visit**
- 03 Clean + Green**
- 04 North Pullman Rehabs**
- 05 Pullman National Monument Opening**
- 06 Plan Updates**
- 07 Open Discussion & Next Steps**

Mayor's Visit



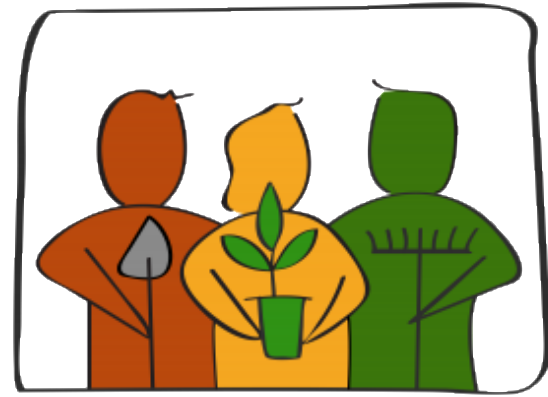


Clean + Green

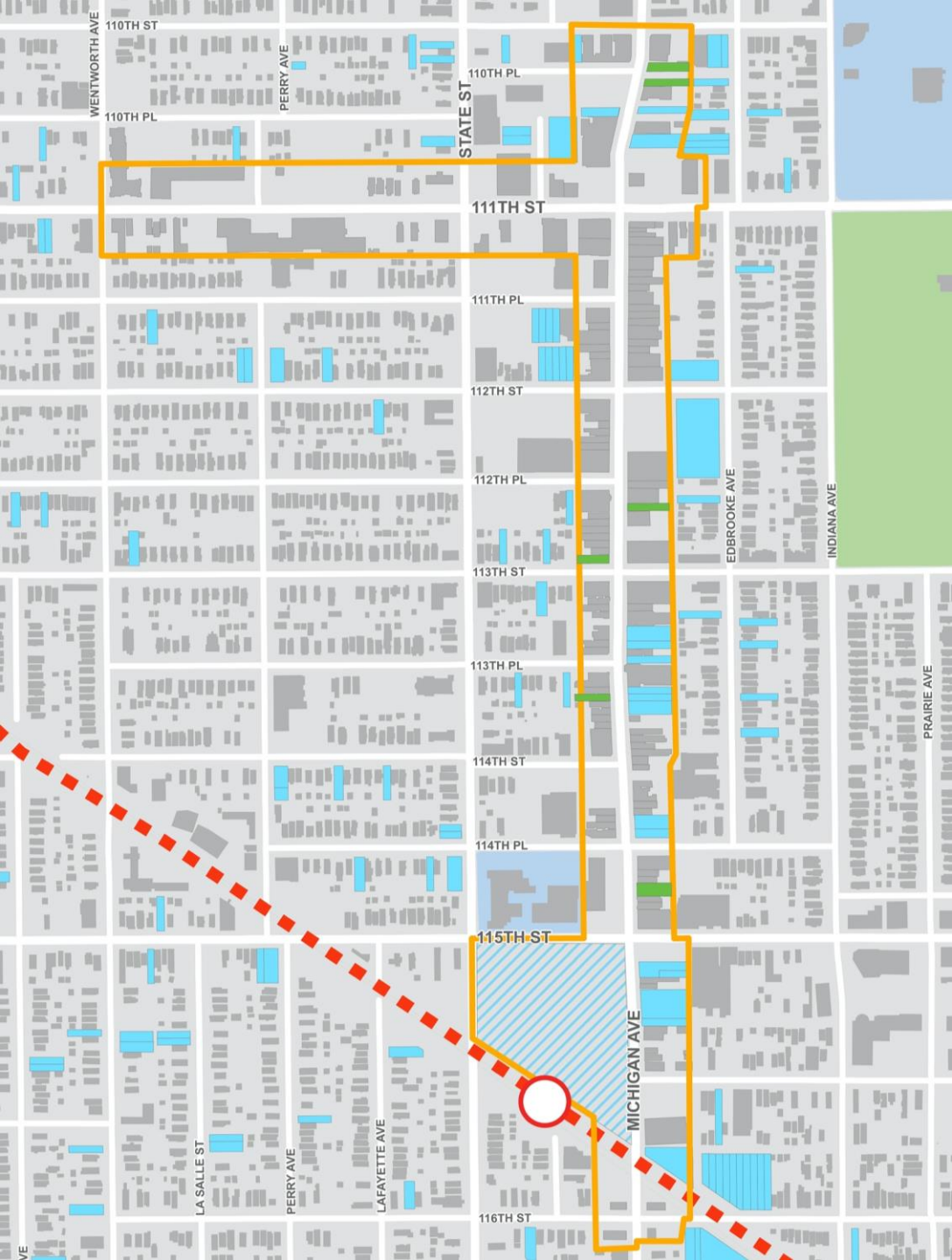


GREENCORPS
CHICAGO


- Greencorps Chicago is the City of Chicago's green job training program for individuals with barriers to employment, focused on horticulture, landscaping, ecological restoration, and tree care.
- Greencorps Chicago is a public/private partnership between the Chicago Department of Transportation and WRD Environmental, and is a 501(c)(3) organization as of December 2019.



GREENCORPS
CHICAGO



 City-owned Property

 Clean + Green Sites

North Pullman Properties

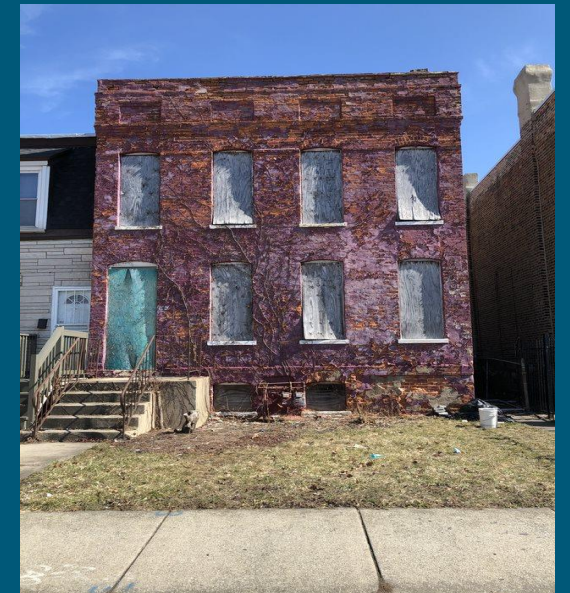
North Pullman Properties

- The acquisition, transfer and start of restoration and development of 30 affordable single-family homes demonstrates what can be accomplished when public and private partners encouraged by a shared commitment to producing quality housing and strengthening families and communities, work together.
- Showcase how \$400 million of investment in new developments and the creation of 1,500 jobs has strengthened the community and catalyzed new affordable housing and other opportunities that are making Pullman a community where people are choosing to go to live and work.
- Demonstrate Pullman is a model for community renewal.

10601 S. Champlain



10643 S. Champlain



Pullman National Monument Grand Opening



GRAND OPENING

LABOR DAY 2021





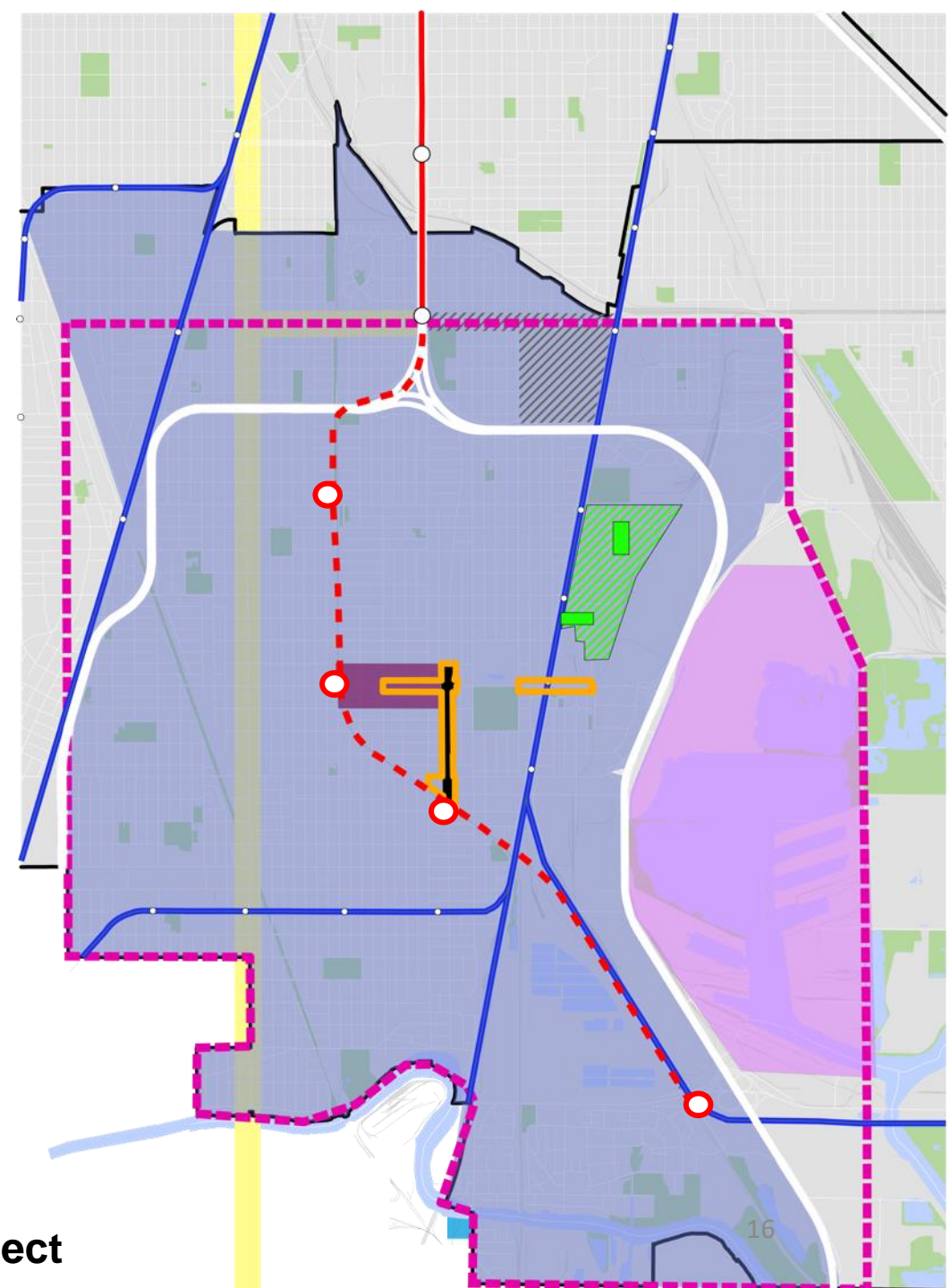
PULLMAN

National Monument & State Historic Site

Area Planning Updates

Current/Upcoming Plans

-  Far South Boundary
-  INVEST S/W Corridors
-  Red Line Extension (RLE)
-  RLE Transit-Supported Development Plan
-  Roseland Medical District Planning
-  Historic Preservation Study (Michigan Ave)
-  Chicago State University / 95th Street
-  Far South Chicago Coalition Quality of Life Plan
-  South Halsted Bus Corridor Enhancement Project
-  Illinois Port District Master Plan
-  Modern Metra Electric (Station Updates)
-  Community Economic Development Empowerment Project



Pullman Streetscape

ISW Pullman

- 111th St, Cottage Grove to Doty, Cottage Grove to MLK and Cottage Grove, 108th Street to 111th Street

Alderman Beale, Ward 9

Scope

- Roadway geometry and intersection improvements
- Full width resurfacing
- Drainage improvements
- Bike lanes
- Ped refuge islands
- Sidewalk, curb, and gutter
- Curb extensions
- ADA ramps and crosswalks
- Street lighting
- Traffic signal upgrades
- Improved pavement markings and signage
- Site furniture and potential seating areas
- Tree planting and potential landscaping

Funding

Source: State, State Rebuild, TIF & CIP Bond

Phase I/II Design and Construction

- \$10,850,000

Status

Design in progress

- Civiltech

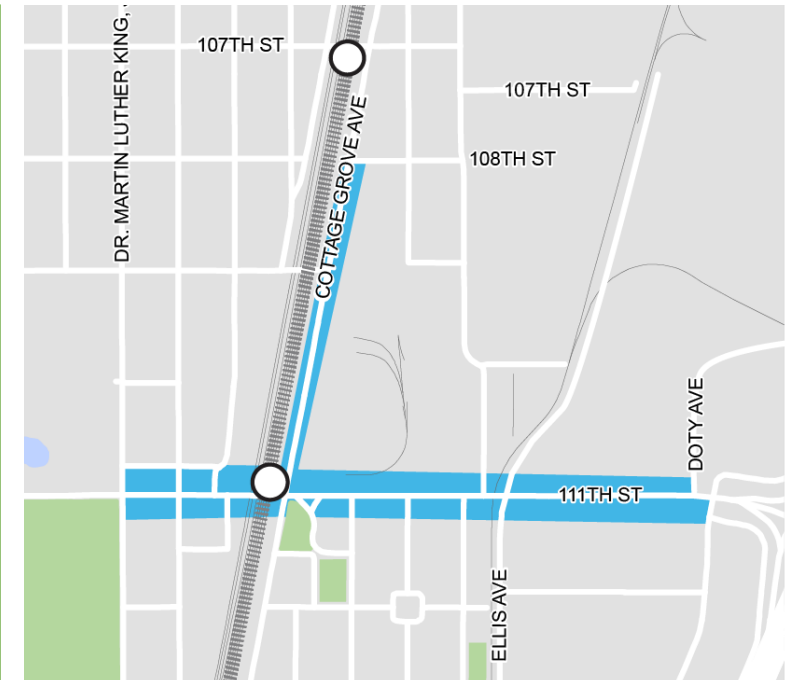
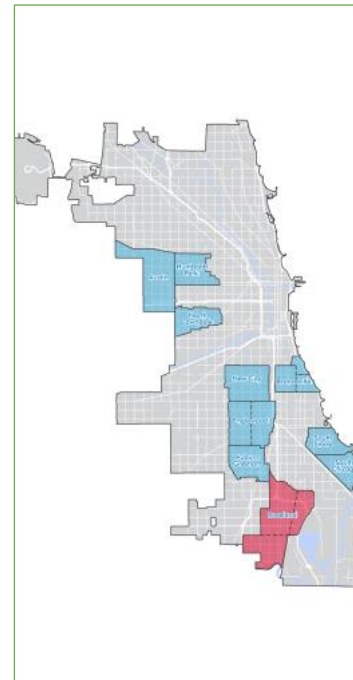
Schedule

Design Start

- In progress – Cottage Grove to Doty
- April 2021 – Cottage Grove to MLK and CG

Construction Start

- Est.Q4 2022 to 2024; 2 to 3 sections of construction



Roseland Streetscape

ISW Roseland

- Michigan, 110th Street to 116th Street and 111th Street, Edbrooke to Stewart

Alderman Beale, Ward 9 / Alderman Austin, Ward 34

Scope

- Roadway geometry and intersection improvements
- Full width resurfacing
- Drainage improvements
- Sidewalk, curb, and gutter
- Curb extensions
- ADA ramps and crosswalks
- Street lighting
- Traffic signal upgrades
- Improved pavement markings and signage
- Side street improvements to the alleys as needed
- Site furniture and potential seating areas
- Light pole identifiers
- Gateway identifier
- Tree planting and potential landscaping
- Two pocket parks/plazas

Funding

- Source: State Rebuild & CIP Bond Phase II Design and Construction
- Est. \$19,550,000

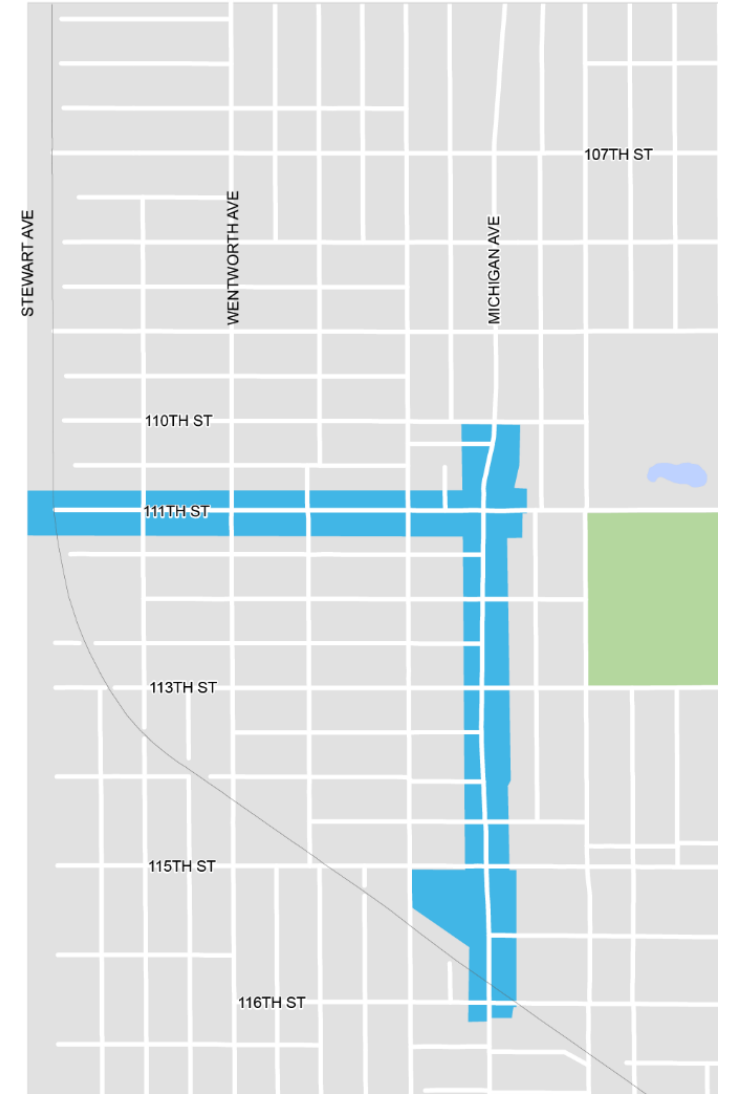
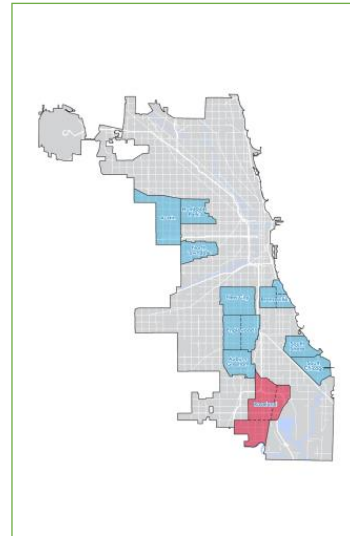
Schedule

Design Start

- July 2021

Construction Start

- 2023 – 2025, 2 to 3 sections of construction



Combined Schedule

