

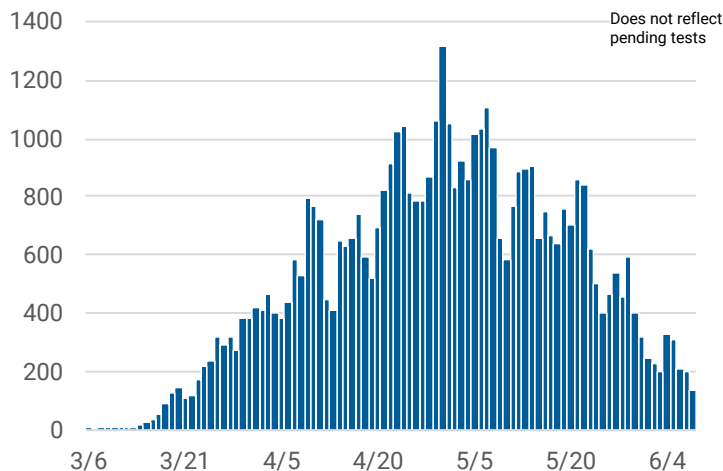


CHICAGO COVID-19 UPDATE

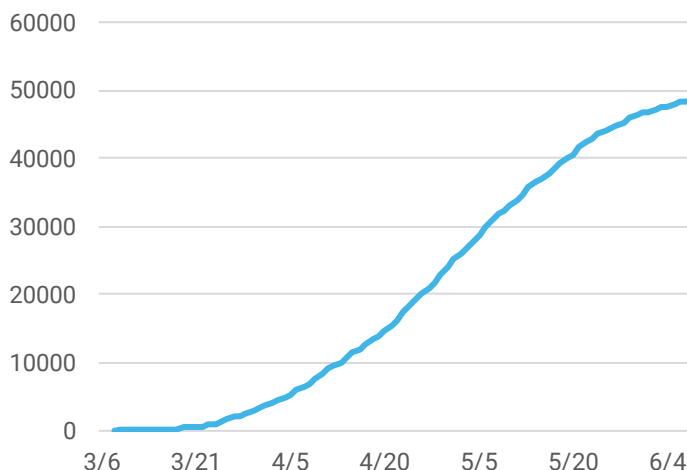
June 9, 2020

There are 48,585 cases of COVID-19 and 2,306 deaths among Chicago residents as of June 9, 2020. This is an increase of 234 cases and 21 deaths since yesterday.

Confirmed daily COVID-19 cases



Confirmed cumulative COVID-19 cases



Daily and cumulative coronavirus 2019 (COVID-19) cases reported for Chicago residents with known laboratory report date. Results for several previous days are updated each day. Note, there was one case of COVID-19 reported in January 2020 that is not included in the daily counts.

COVID-19 Morbidity and mortality by geography

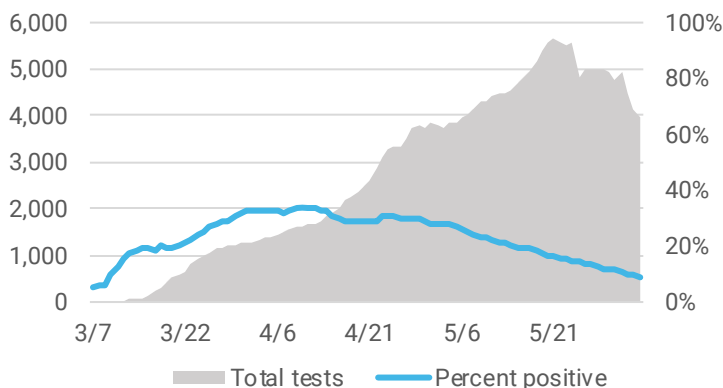
GEOGRAPHY	CASES ¹	DEATHS
Chicago	48,585	2,306
Illinois (IDPH link)	129,212	6,018
U.S. (CDC link)	1,956,421	110,925
World (WHO link)	7,039,918	404,396

¹Does not include persons with pending COVID-19 tests or persons with COVID-19 related illness who have not been tested.

As of June 9, 2020, there have been 264,825 tests performed. The 7-day average is 3,942 tests per day, with a percent positivity of 9.1%.

Average daily COVID-19 testing

Number of tests performed and percentage of tests that were positive averaged over 7 days.



Molecular tests performed at state and private laboratories with known specimen collection date. Percent positivity is based on individuals tested. Tests performed between Jan 21 and Feb 29, 2020 are not included in graph. CDPH may not receive all non-positive results.

COVID-19 Case characteristics for Chicago residents

CHARACTERISTIC	NUMBER	% TOTAL CASES ¹	RATE PER 100,000
Chicago	48,585	100%	1,795.5
Age			
0-17	2,160	4.4%	393.4
18-29	8,724	18.0%	1,577.8
30-39	8,609	17.7%	1,886.6
40-49	8,909	18.3%	2,647.9
50-59	8,366	17.2%	2,673.1
60-69	5,958	12.3%	2,265.5
70+	5,838	12.0%	2,480.9
Under investigation	21	0.1%	-
Gender			
Female	23,944	49.3%	1,727.4
Male	23,622	48.6%	1,789.7
Under investigation	1,019	2.1%	-
Race-ethnicity²			
Latinx	17,867	47.9%	2,300.5
Black, non-Latinx	11,136	29.9%	1,419.9
White, non-Latinx	5,390	14.4%	598.9
Asian, non-Latinx	1,059	2.8%	588.9
Other, non-Latinx	1,854	5.0%	1,551.9
Under investigation	11,279	23.2%	-

²Race-ethnicity percentage is calculated among those with known race-ethnicity as reported by the medical provider.

COVID-19 Death characteristics for Chicago residents

CHARACTERISTIC	DEATHS	% TOTAL DEATHS	% DEATHS WITHIN GROUP	RATE PER 100,000 POP
Chicago	2,306	100%	4.7%	85.2
Age				
0-17	1	0.0%	0.0%	0.2
18-29	15	0.7%	0.2%	2.7
30-39	56	2.4%	0.7%	12.3
40-49	120	5.2%	1.3%	35.7
50-59	246	10.7%	2.9%	78.6
60-69	500	21.7%	8.4%	190.1
70+	1,368	59.3%	23.4%	581.3
Gender				
Female	926	40.2%	3.9%	66.8
Male	1,379	59.8%	5.8%	104.5
Under investigation	1	0.0%	0.0%	-
Race-ethnicity²				
Latinx	698	30.5%	3.9%	89.9
Black, non-Latinx	1,024	44.7%	9.2%	130.6
White, non-Latinx	439	19.2%	8.1%	48.8
Asian, non-Latinx	109	4.8%	10.3%	60.6
Other, non-Latinx	20	0.8%	1.1%	16.7
Under investigation	16	0.7%	0.1%	-

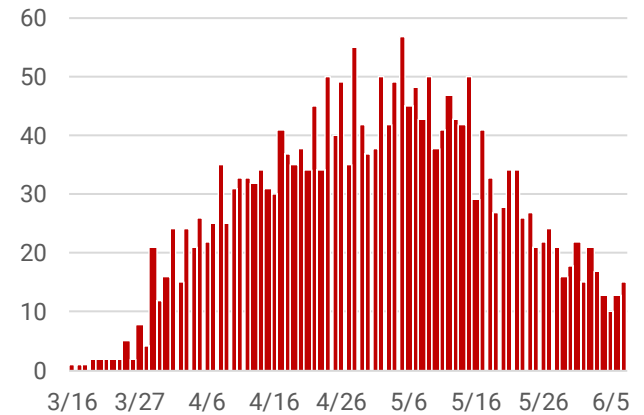
²Race-ethnicity percentage is calculated among those with known race-ethnicity as reported by the medical provider.

Underlying chronic conditions among Chicago residents who died from COVID-19

CHARACTERISTIC	NUMBER	% OF KNOWN
Known medical history	2,251	-
Underlying chronic conditions ³	2,075	92.2%
No underlying chronic conditions	176	7.8%
Under investigation	55	-

³Cases with at least one underlying chronic condition. Most common underlying conditions include diabetes, hypertension, and lung disease.

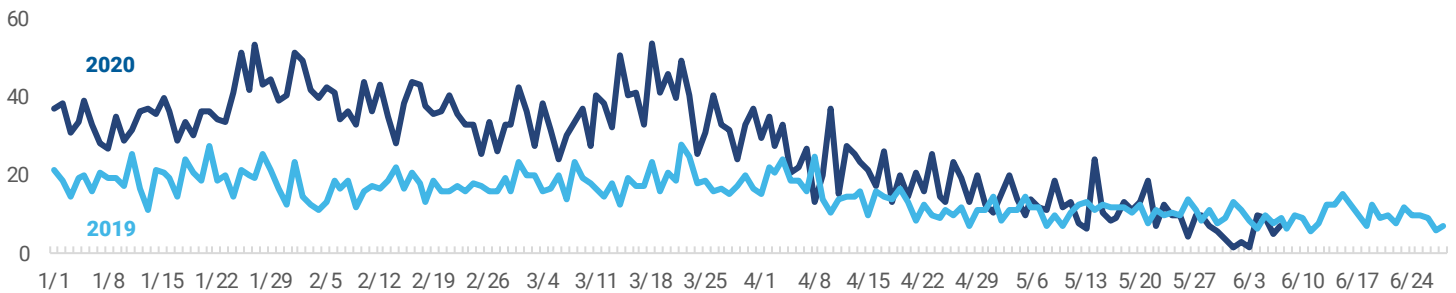
Daily COVID-19 deaths



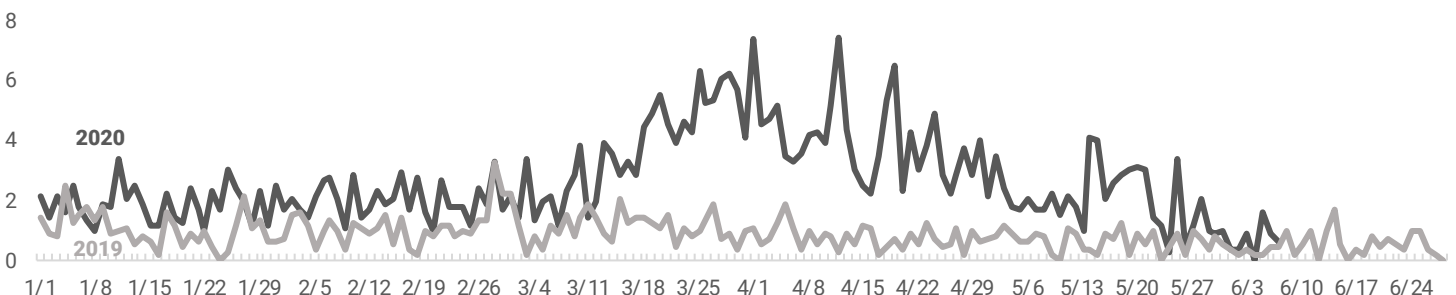
Chicago resident coronavirus 2019 (COVID-19) cases who have died, by date of death. Results for several previous days are updated each day.

COVID-19 symptoms are similar to those of influenza, so monitoring influenza-like illness (ILI) may also help identify COVID-19. ILI activity in 2020 that is higher than what was experienced in 2019 could indicate the presence of COVID-19 in the community.

Percent of daily emergency department (ED) visits due to influenza-like illness in Chicago among all age groups, 2020 vs. 2019



Percent of daily emergency department (ED) visits due to influenza-like illness in Chicago among persons aged 65+, 2020 vs. 2019



Percent of daily emergency department visits attributed to influenza-like illness for Chicago zip codes based on chief complaint submitted to ESSENCE.