



Ask Dr. Arwady

12/9/2021

Guest: Nik Prachand, Director of Epidemiology, CDPH

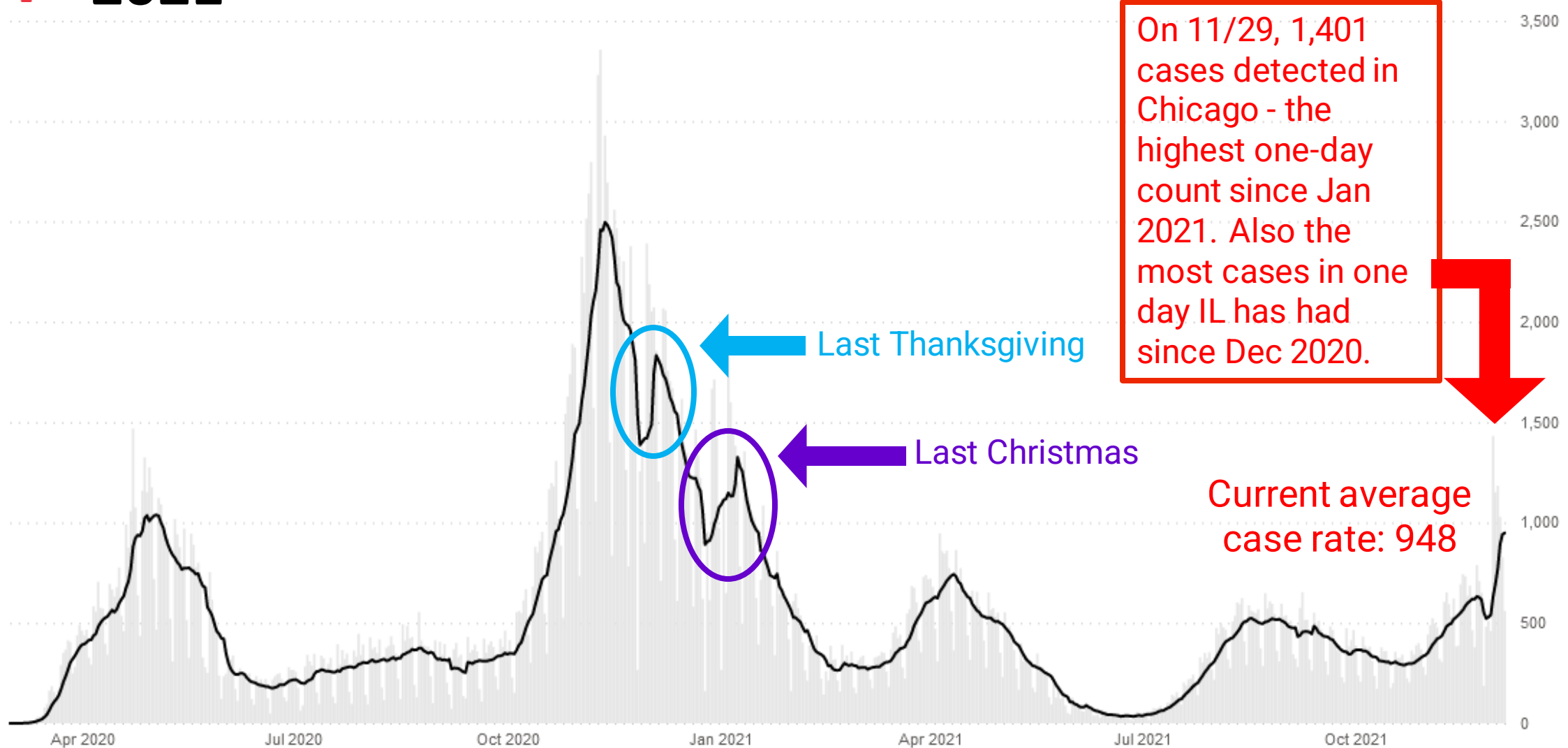


Chicago COVID-19 Community Transmission and Risk Matrix

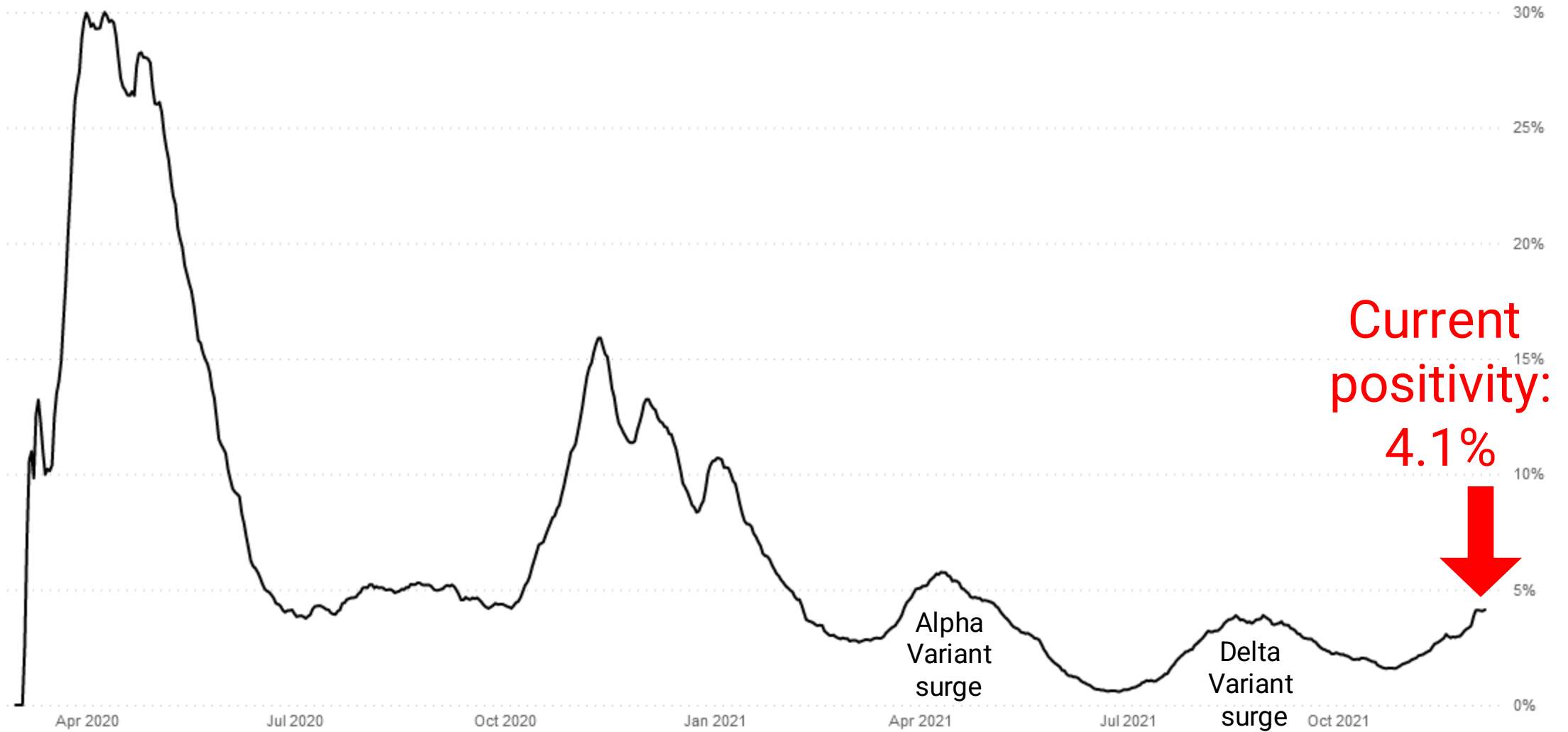
	VERY HIGH TRANSMISSION	HIGH TRANSMISSION	SUBSTANTIAL TRANSMISSION	LOWER TRANSMISSION	LOW TRANSMISSION
COVID-19 CASES DIAGNOSED PER DAY Chicago residents - 7-day rolling daily average	800+ Current: 948 Increasing	400 - 799	200 - 399	20 - 199	<20
COVID-19 TEST POSITIVITY Chicago residents - 7-day rolling daily average	10%+	6.6 - 9.9%	5.0 - 6.5%	2 - 4.9% Current: 4.1% Increasing	<2%
HOSPITAL BEDS (NON-ICU) OCCUPIED BY COVID PATIENTS Chicago hospitals - 7-day rolling daily average	1250+	750 - 1249	250 - 749 Current: 379 Increasing	100 - 249	<100
ICU BEDS OCCUPIED BY COVID PATIENTS Chicago hospitals - 7-day rolling daily average	400+	300 - 399	100 - 299 Current: 114 Increasing	20 - 99	<20

Source: Chicago Department of Public Health, data current as of December 9, 2021. These metrics represent general community COVID transmission and should not be applied to individual settings that have mitigation practices in place.

Chicago: Highest average COVID case rate since January 2021



Chicago: COVID test positivity continues to increase; still adequate testing overall

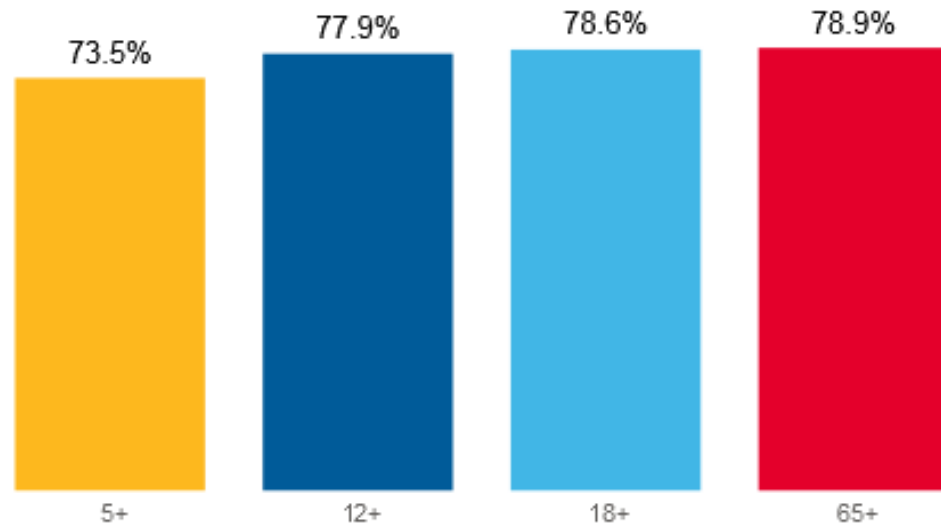


Current positivity: 4.1%

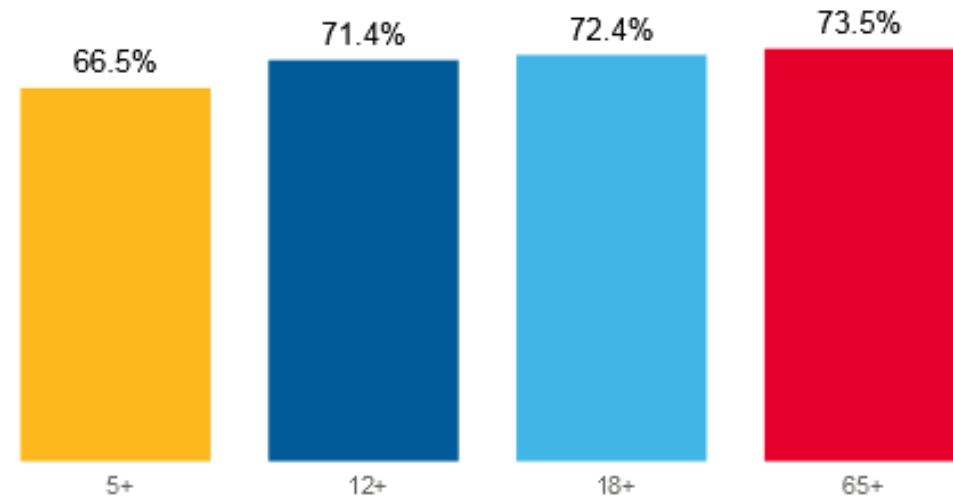


Citywide Vaccination Rate

At least one dose (% vaccinated as of 12/7/2021)



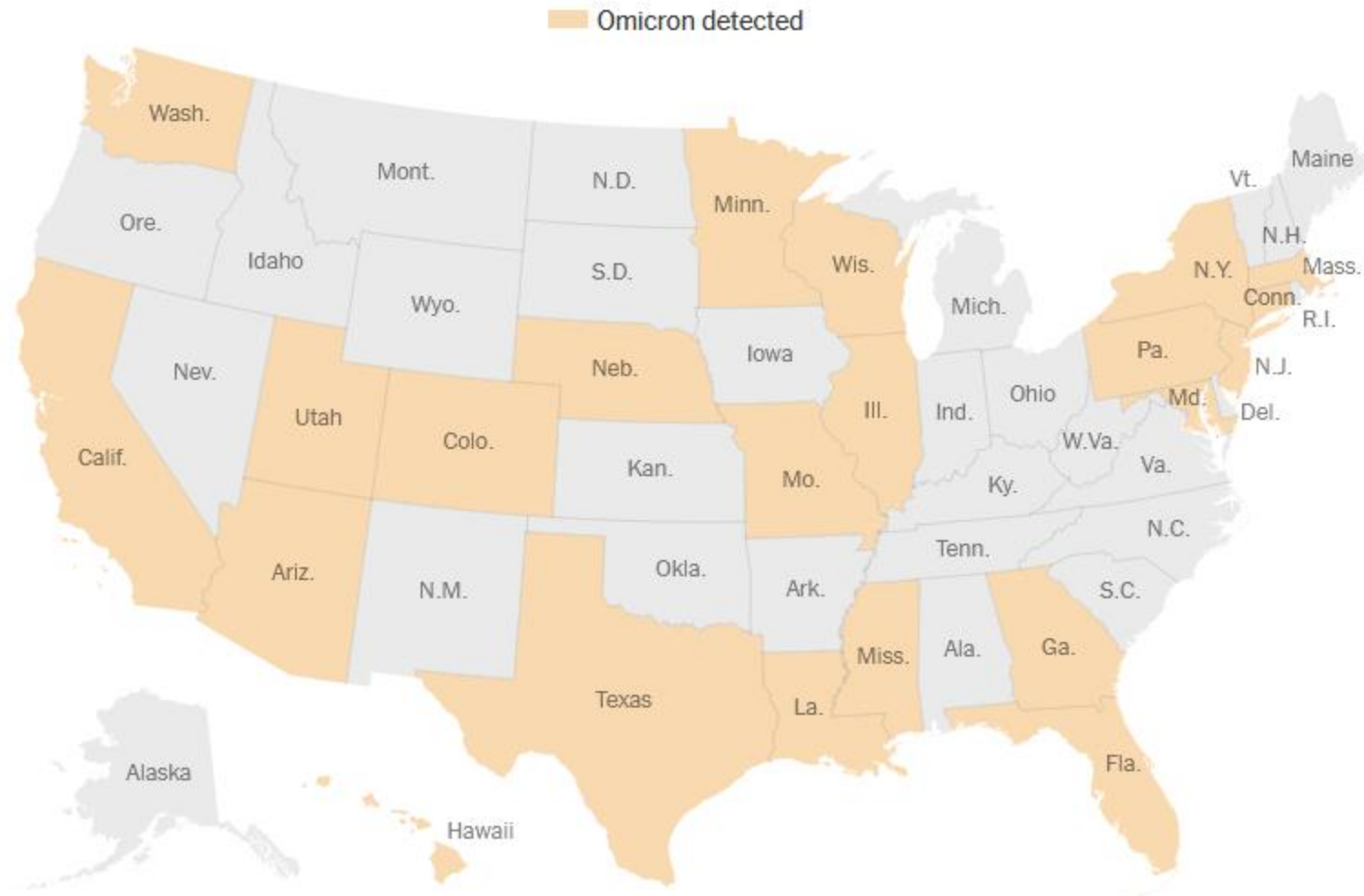
Completed vaccine series (% vaccinated as of 12/7/2021)



built by
slalom

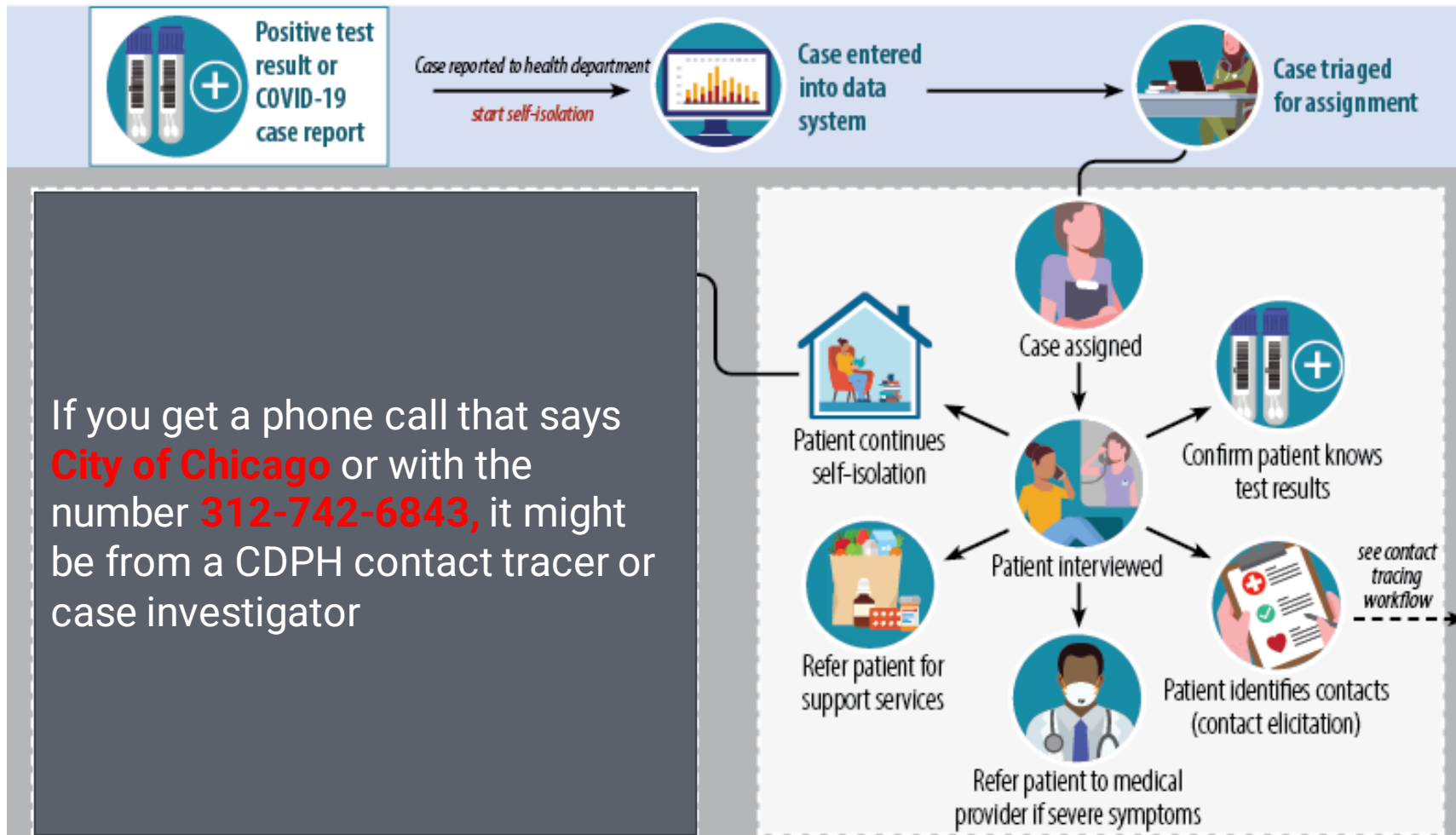


Omicron detected in the U.S.



- In the United States, the Omicron variant has been detected in 22 states
- On Dec 7, we announced the first case of the Omicron Variant in Illinois was found in a vaccinated Chicagoan

REMINDER: How does case investigation work?



If you get a phone call that says **City of Chicago** or with the number **312-742-6843**, it might be from a CDPH contact tracer or case investigator

In **case investigation**, public health staff work with a patient to recall everyone with whom they have had close contact during the timeframe while they may have been infectious.

REMINDER: How does contact tracing work?



Contact tracing includes warning exposed individuals (contacts) of their potential exposure as rapidly and sensitively as possible.



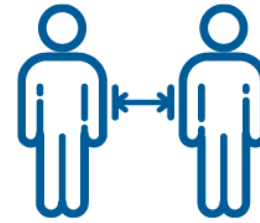
So, what should we do to protect ourselves and community from COVID and its variants?



VAX UP



MASK UP



BACK UP



WASH UP



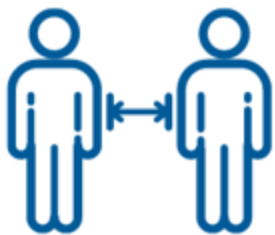
TEST UP



- The vaccine makes you less likely to die or be hospitalized if you do catch COVID
- **All** Chicagoans 18+ should get a booster **NOW**
 - 6 months after Pfizer/Moderna, 2 months after J/J
- Preliminary laboratory studies demonstrate 3 doses of Pfizer COVID-19 Vaccine help neutralize the Omicron variant
- Family Vaccine Clinics at City Colleges happening this weekend (9am-2pm; walk ins welcome, registration encouraged)
 - Saturday, December 11 – Kennedy King College
 - Sunday, December 12 – Olive Harvey College
- Walgreens is hosting pediatric clinics at select locations throughout the city
 - Saturdays through Jan 15 (9:30am-4pm; appointment only)
- Visit chi.gov/covidvax or call 312-746-4835



MASK UP



BACK UP



WASH UP

- Masks continue to be required in all public indoor settings, regardless of vaccination status.
 - Do choose masks that:
 - Have two or more layers of washable, breathable fabric
 - Completely cover your nose and mouth
 - Fit snugly against the sides of your face and don't have gaps
 - Have a nose wire to prevent air from leaking out of the top of the mask
- Stay home if you're sick and/or waiting on results from a COVID-19 test



- Low or no-cost testing is available at local health centers and select pharmacies:
 - [COVID-19 Testing Sites – Map](#)
- CDPH distribution
 - What are we doing?
- Biden Administration to invest \$650 million in rapid diagnostic testing
 - Funding will expand and sustain testing capacity for hospitals, urgent care, pharmacies and other community health care settings



Get Covered Illinois! **Enroll by December 15th** to have your coverage start on January 1, 2022

- Open Enrollment goes through January 15, 2022 – however if you enroll after December 15, coverage will not start until February 1
- Sign up for a free visit with a patient navigator to help you understand how to pick a plan!
 - Widget.GetCoveredAmerica.org

**YOUR HEALTH
COVERAGE
STARTS HERE**



GetCoveredIllinois.gov
The Official Health Marketplace

*Insurance is not required
for COVID-19 vaccination

Need a vaccine or a booster? Have questions?

visit **CHI.GOV/COVIDVAX**

or call **312-746-4835**

