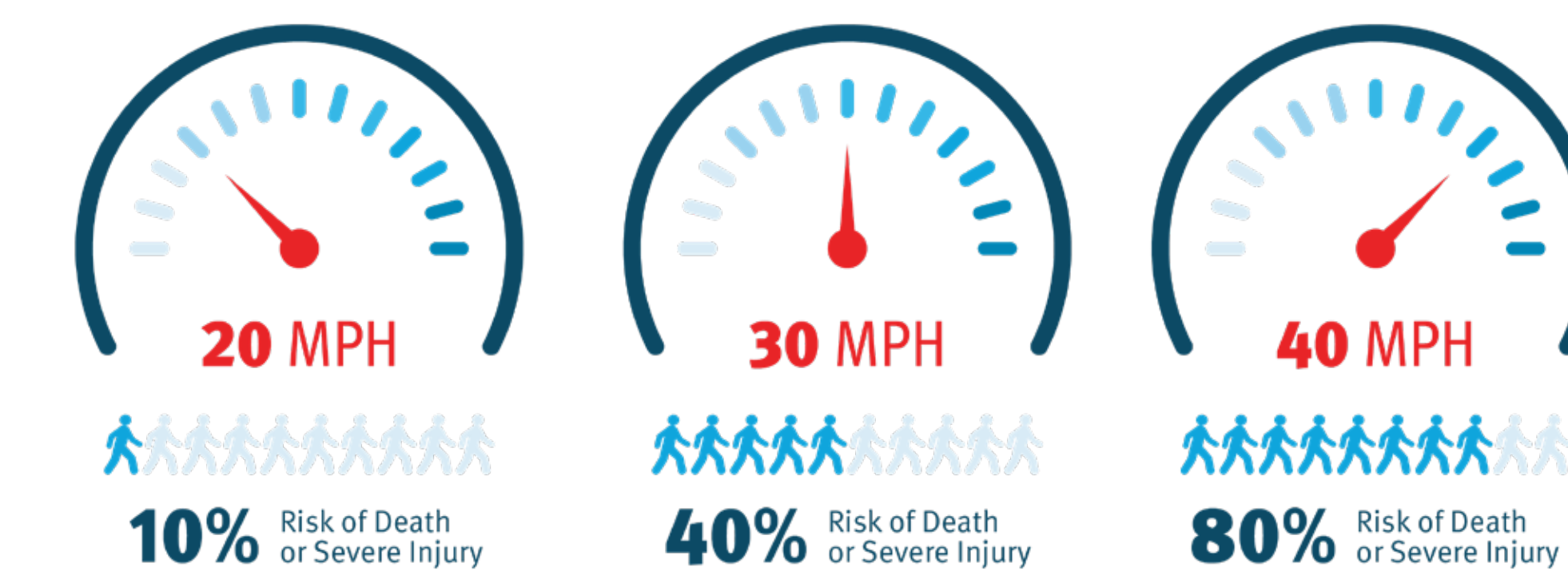


# SAFETY IMPROVEMENTS: ARCHER: 47TH TO WESTERN



## SAFETY ELEMENTS ON THIS PAGE:



SLIP LANE CLOSURE

- Simplifies the intersection
- Reduces conflicts between cars and people walking
- Provides more space for people walking
- Safer turning speeds

PROTECTED BIKE LANE

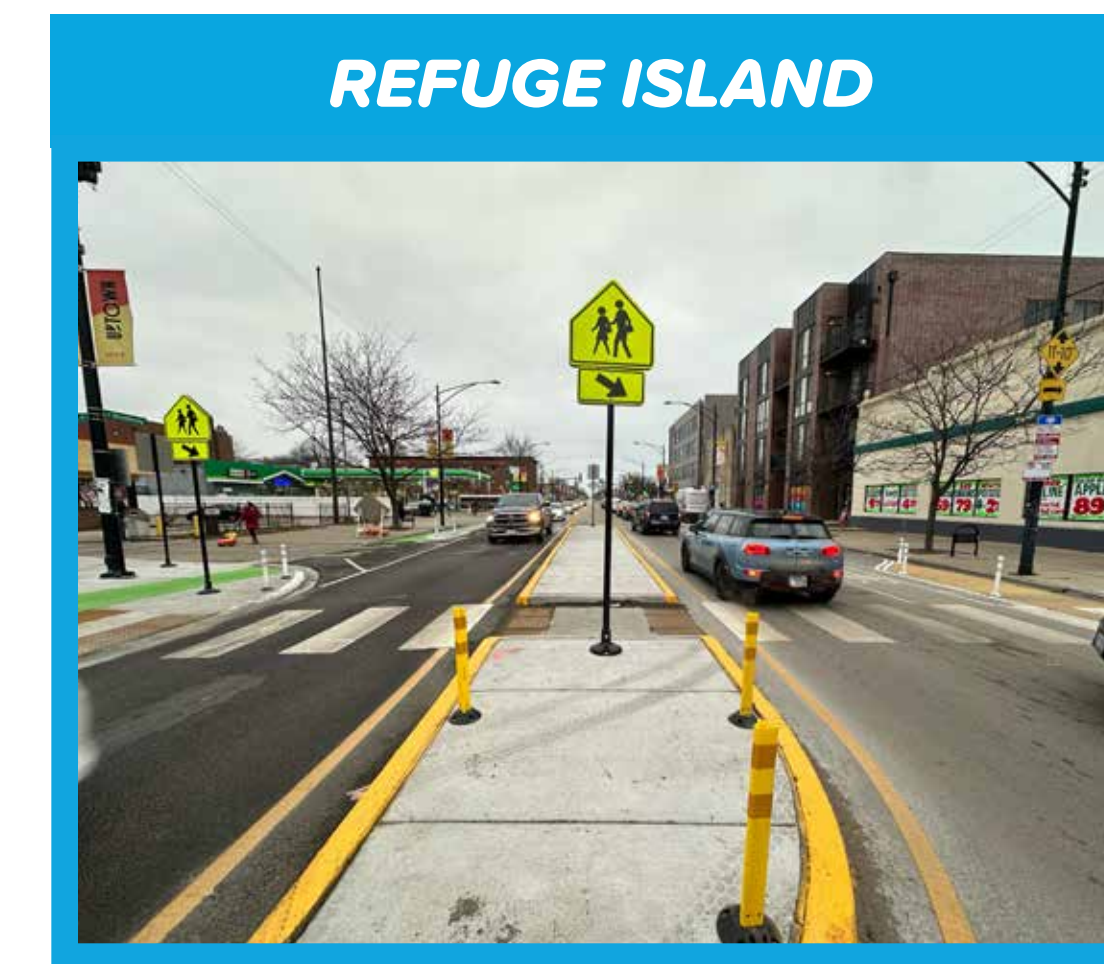


- Reduces the number of people riding bikes and scooters on the sidewalk
- Promotes a safer, calmer, and better organized street by providing more space between people walking and driving
- Provides a low-stress route for people biking
- Reduce parking and loading in the bike lane



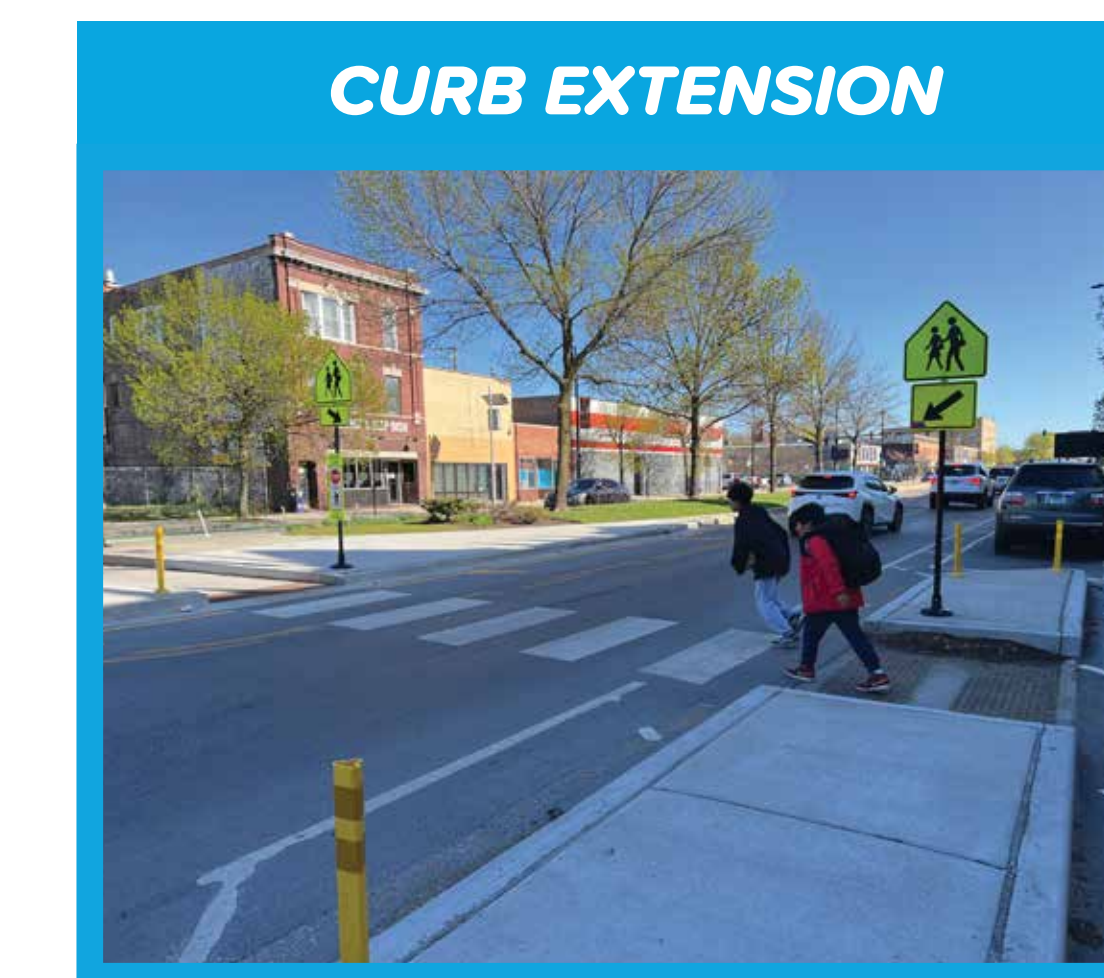
LEFT TURN LANE

- Dedicated turn lanes to improve safety and organization
- Reduced number of lanes having to turn across
- Provides a dedicated lane for through traffic
- Reduces cars weaving in and out of lanes
- Creates consistent and predictable travel lanes that will eliminate disruptions from turning cars



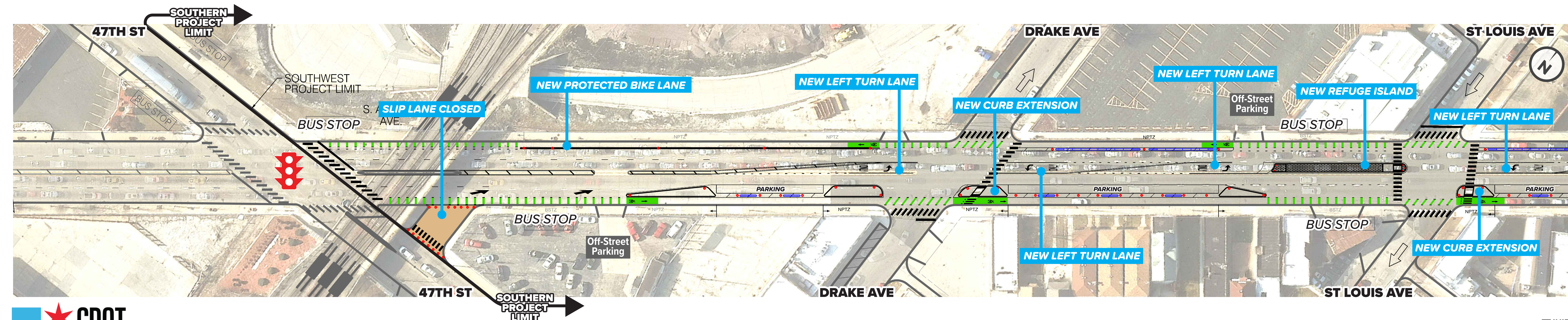
REFUGE ISLAND

- Provides a shorter distance for people walking across Archer
- Allows people walking to navigate one direction of traffic at a time
- Improved visibility of people walking
- Encourages safer, more consistent vehicle travel speeds



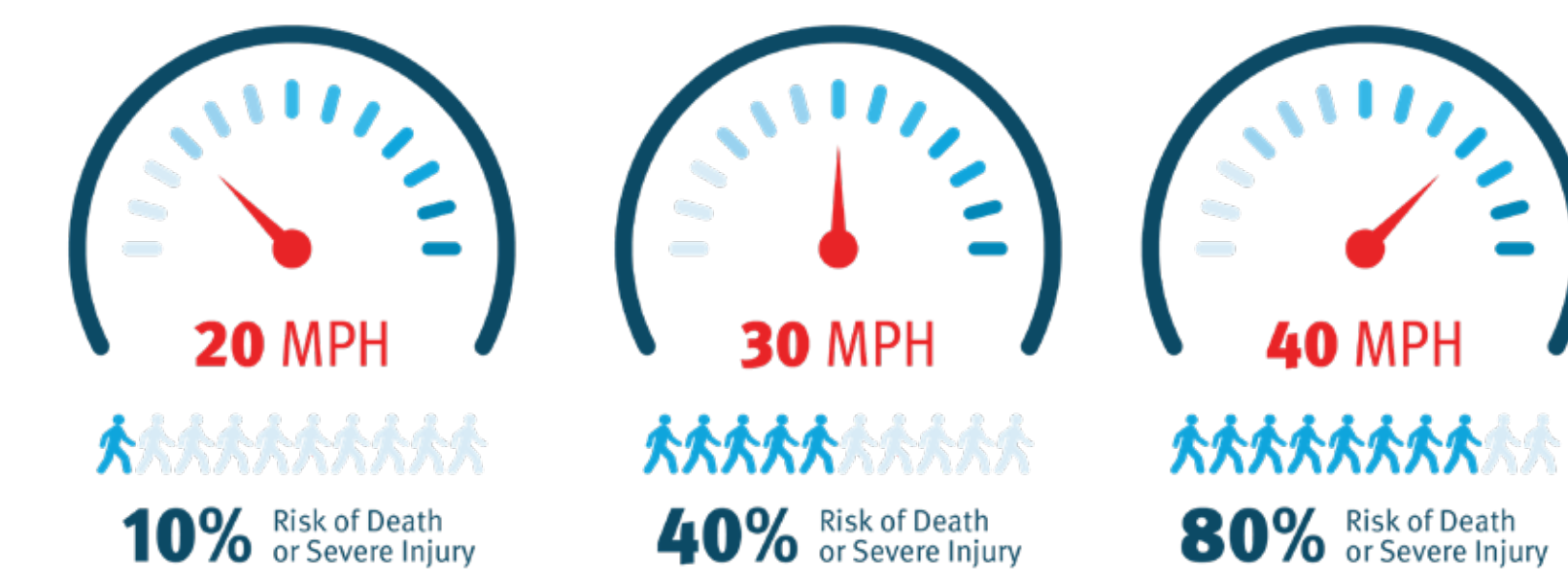
CURB EXTENSION

- Widens the sidewalk with more space for people walking
- Reduces the distance for people walking across Archer
- Improved visibility between people walking and cars & trucks
- Reduces turning car speeds

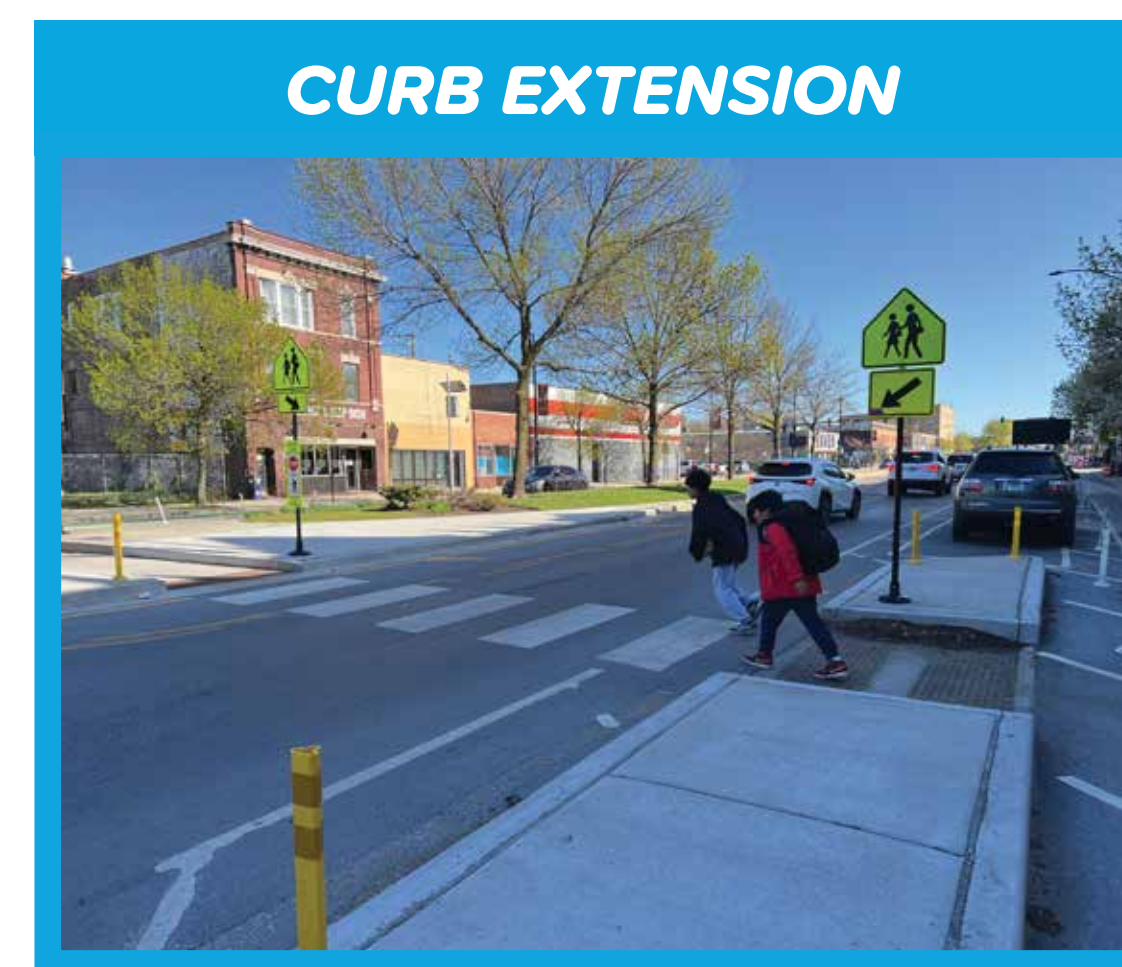




# SAFETY IMPROVEMENTS: ARCHER: 47TH TO WESTERN



## SAFETY ELEMENTS ON THIS PAGE:



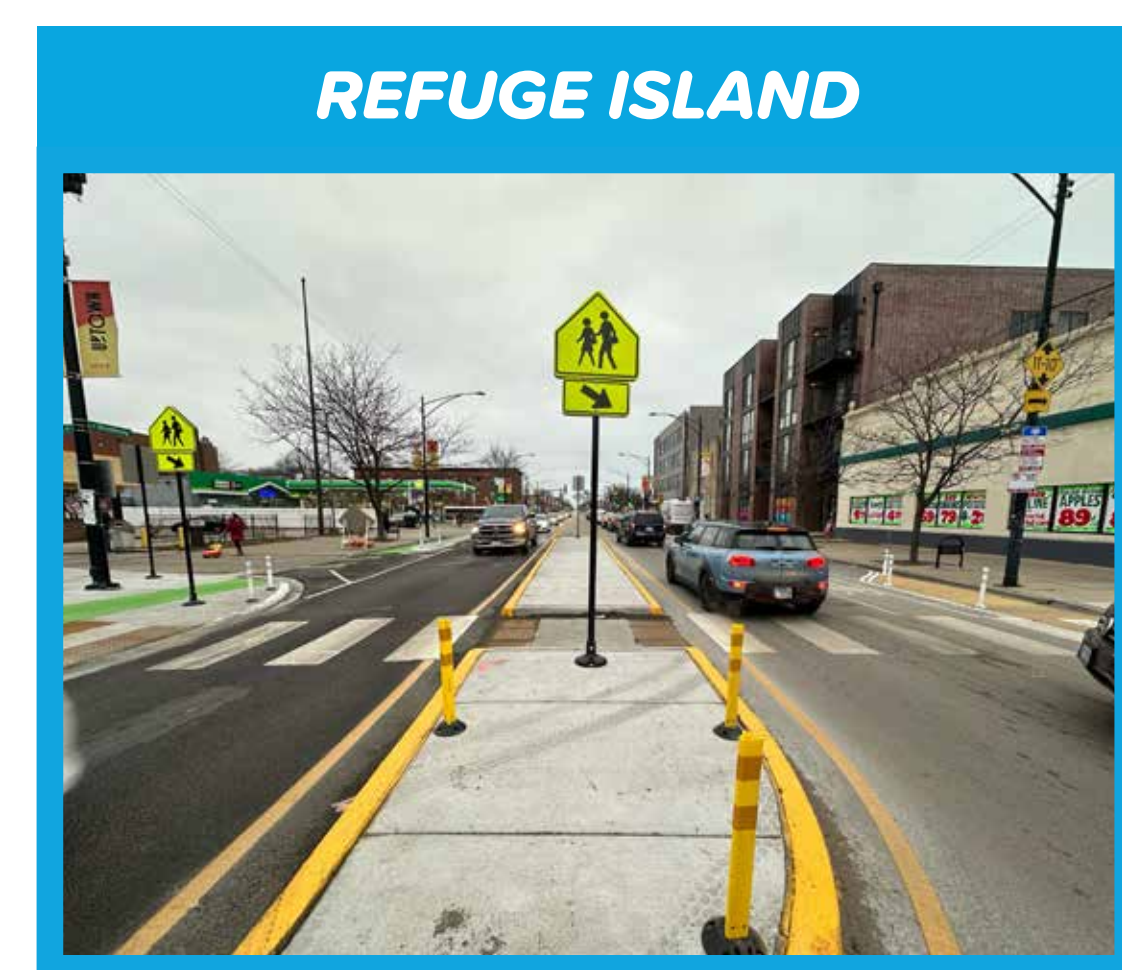
**CURB EXTENSION**

- Widens the sidewalk with more space for people walking
- Reduces the distance for people walking across Archer
- Improved visibility between people walking and cars & trucks
- Reduces turning car speeds



**PROTECTED BIKE LANE**

- Reduces the number of people riding bikes and scooters on the sidewalk
- Promotes a safer, calmer, and better organized street by providing more space between people walking and driving
- Provides a low-stress route for people biking
- Reduce parking and loading in the bike lane



**REFUGE ISLAND**

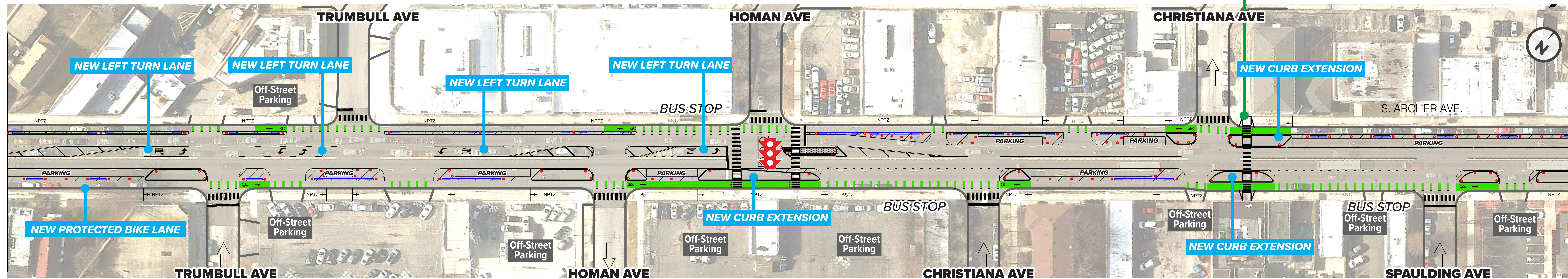
- Provides a shorter distance for people walking across Archer
- Allows people walking to navigate one direction of traffic at a time
- Improved visibility of people walking
- Encourages safer, more consistent vehicle travel speeds



**LEFT TURN LANE**

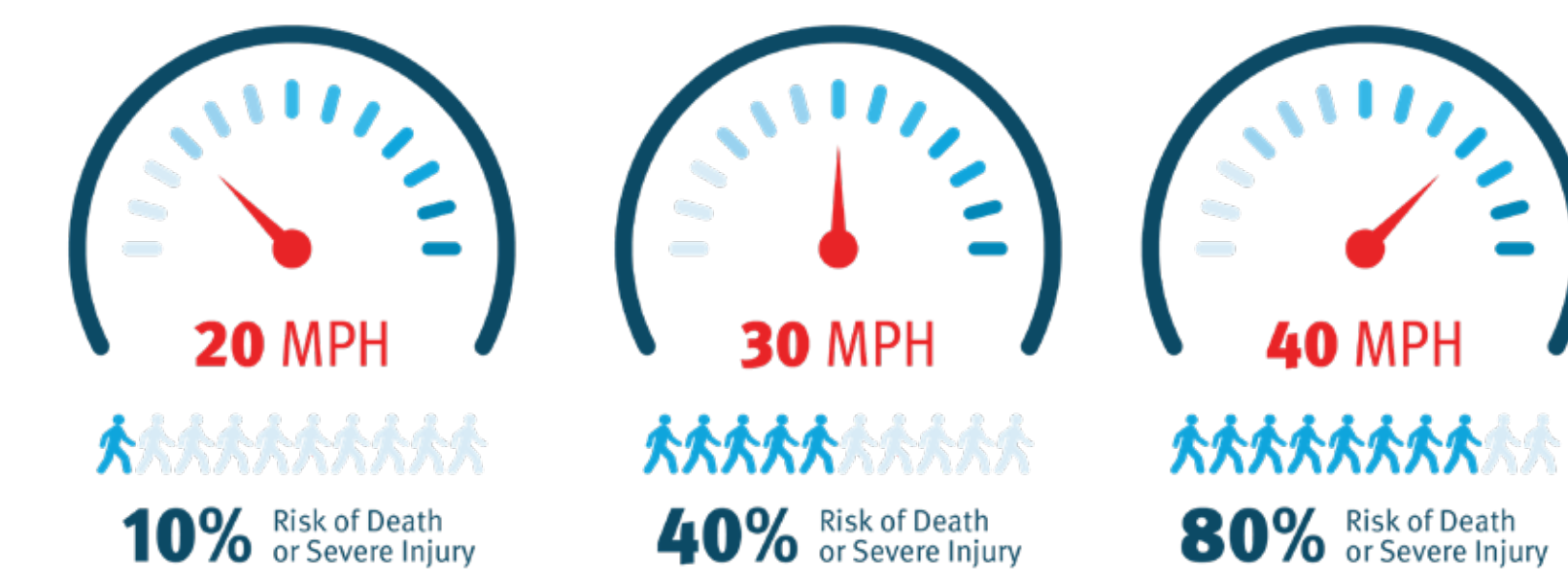
- Dedicated turn lanes to improve safety and organization
- Reduced number of lanes having to turn across
- Provides a dedicated lane for through traffic
- Reduces cars weaving in and out of lanes
- Creates consistent and predictable travel lanes that will eliminate disruptions from turning cars

## NEW PEDESTRIAN CROSSING





# SAFETY IMPROVEMENTS: ARCHER: 47TH TO WESTERN



## SAFETY ELEMENTS ON THIS PAGE:



- Widens the sidewalk with more space for people walking
- Reduces the distance for people walking across Archer
- Improved visibility between people walking and cars & trucks
- Reduces turning car speeds

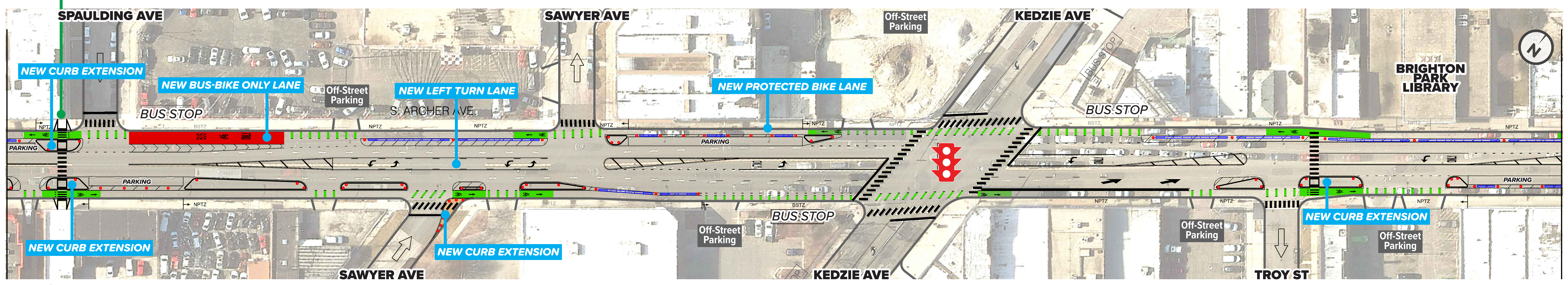


- Dedicated turn lanes to improve safety and organization
- Reduced number of lanes having to turn across
- Provides a dedicated lane for through traffic
- Reduces cars weaving in and out of lanes
- Creates consistent and predictable travel lanes that will eliminate disruptions from turning cars



- Reduces the number of people riding bikes and scooters on the sidewalk
- Promotes a safer, calmer, and better organized street by providing more space between people walking and driving
- Provides a low-stress route for people biking
- Reduce parking and loading in the bike lane

## NEW PEDESTRIAN CROSSING



Contact us at: [completestreets@cityofchicago.org](mailto:completestreets@cityofchicago.org)

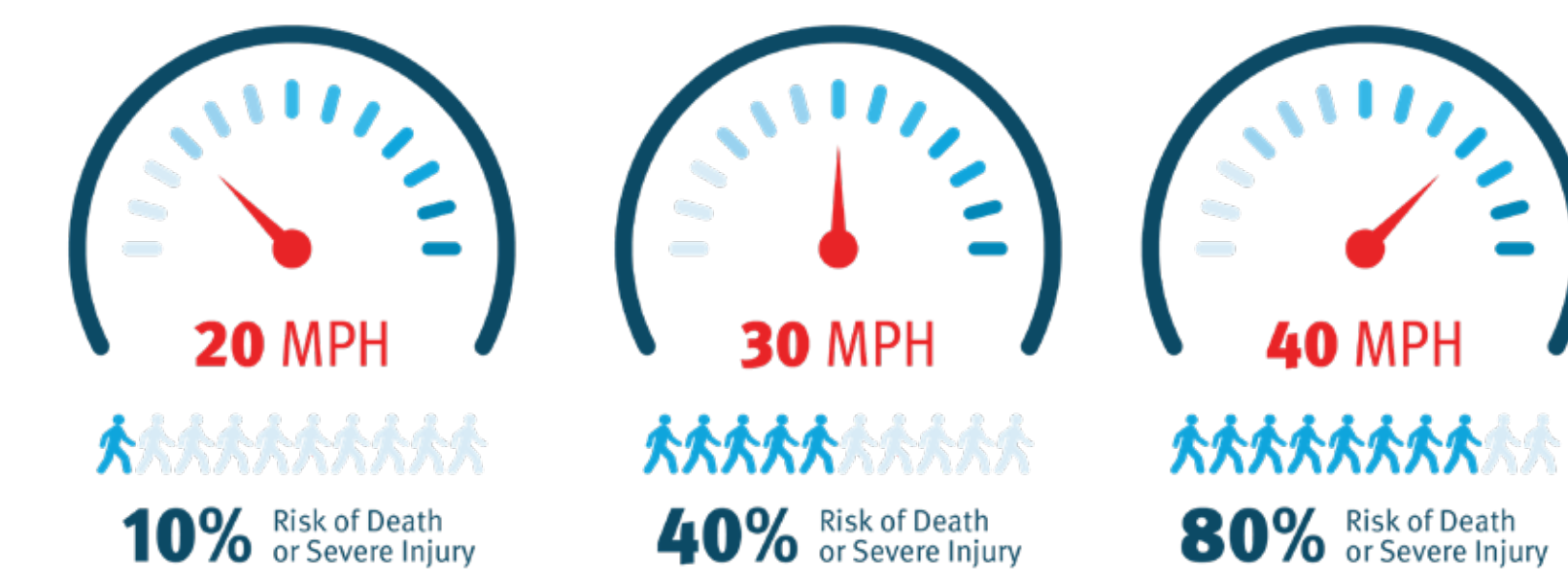
Write down your comments:

To find more information about projects, visit or scan: [chicago.gov/CompleteStreets](http://chicago.gov/CompleteStreets)





# SAFETY IMPROVEMENTS: ARCHER: 47TH TO WESTERN



## SAFETY ELEMENTS ON THIS PAGE:



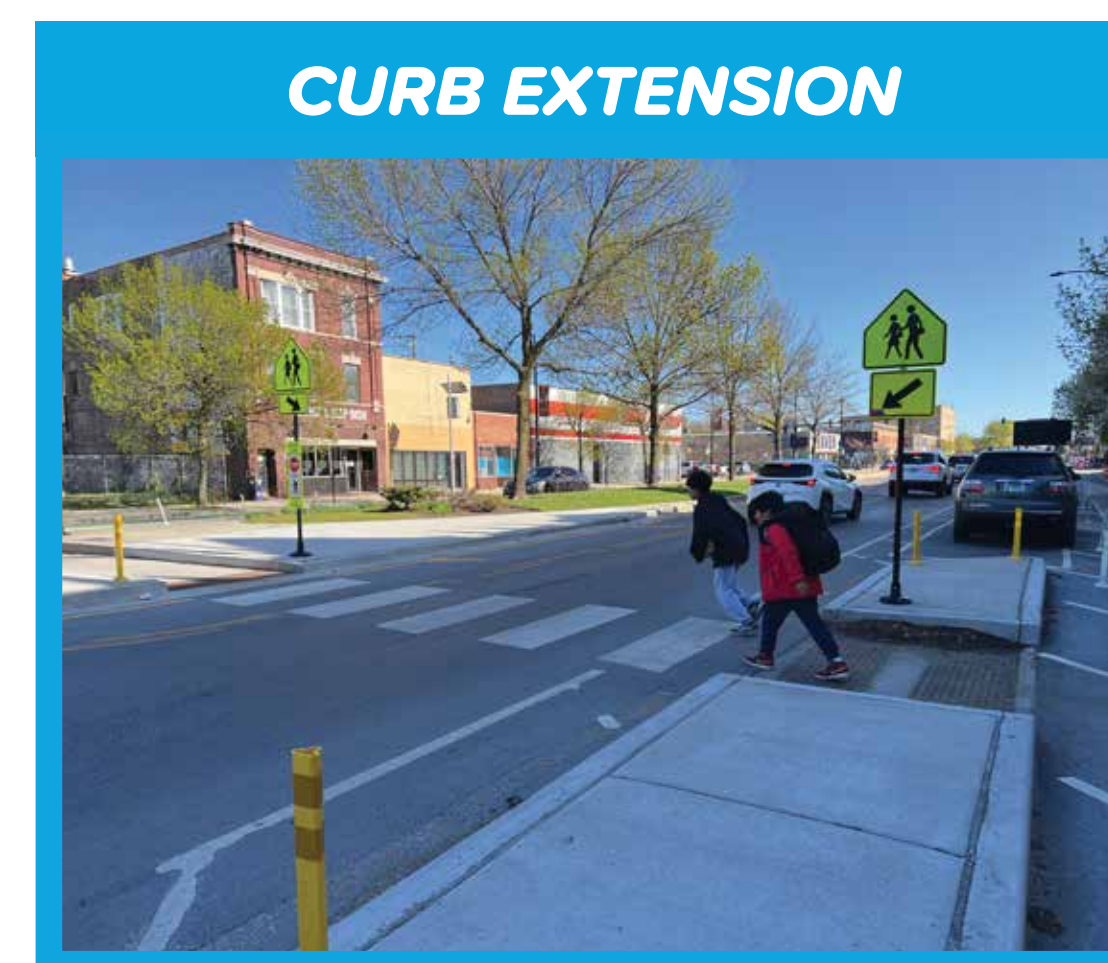
REFUGE ISLAND

- Provides a shorter distance for people walking across Archer
- Allows people walking to navigate one direction of traffic at a time
- Improved visibility of people walking
- Encourages safer, more consistent vehicle travel speeds



PROTECTED BIKE LANE

- Reduces the number of people riding bikes and scooters on the sidewalk
- Promotes a safer, calmer, and better organized street by providing more space between people walking and driving
- Provides a low-stress route for people biking
- Reduce parking and loading in the bike lane



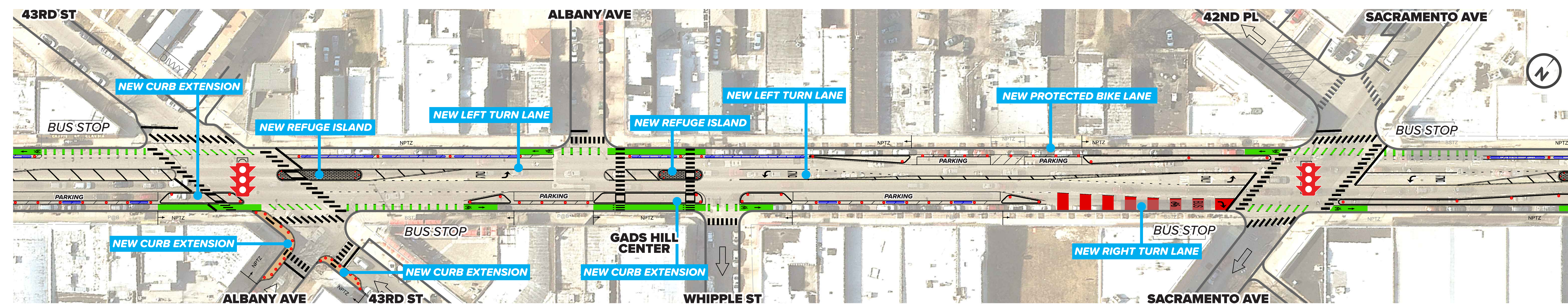
CURB EXTENSION

- Widens the sidewalk with more space for people walking
- Reduces the distance for people walking across Archer
- Improved visibility between people walking and cars & trucks
- Reduces turning car speeds



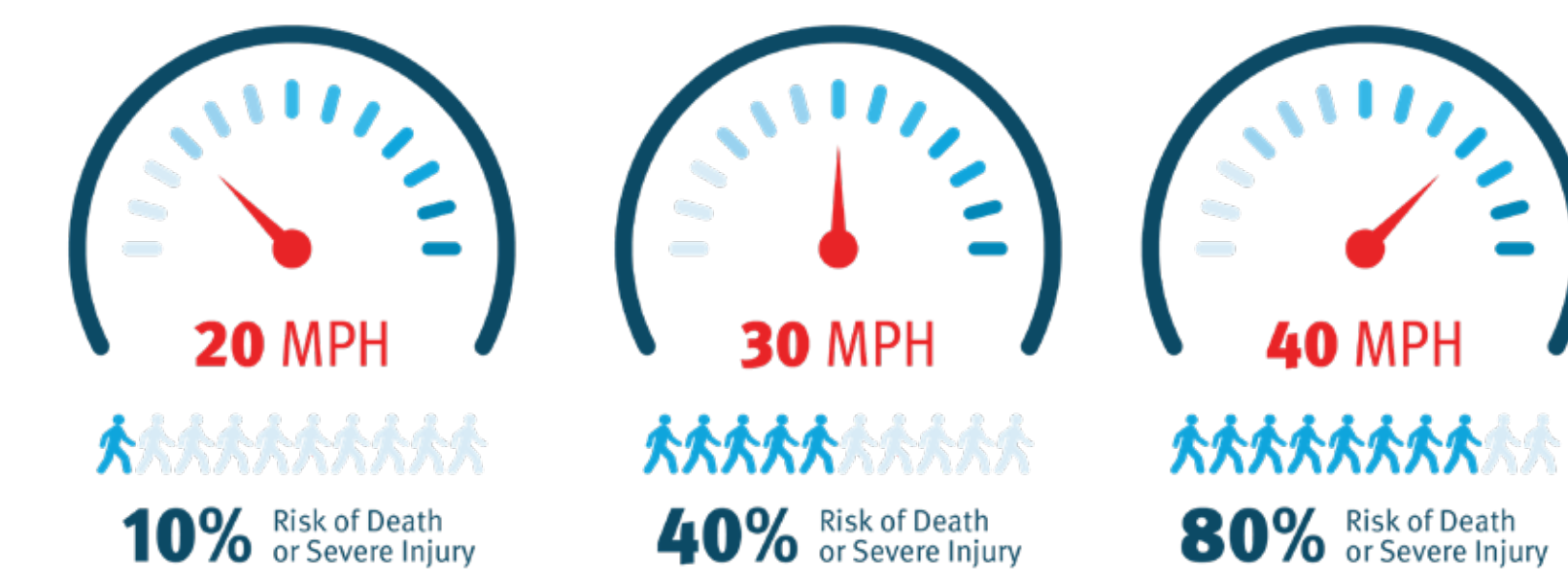
LEFT TURN LANE

- Dedicated turn lanes to improve safety and organization
- Reduced number of lanes having to turn across
- Provides a dedicated lane for through traffic
- Reduces cars weaving in and out of lanes
- Creates consistent and predictable travel lanes that will eliminate disruptions from turning cars





# SAFETY IMPROVEMENTS: ARCHER: 47TH TO WESTERN



## SAFETY ELEMENTS ON THIS PAGE:



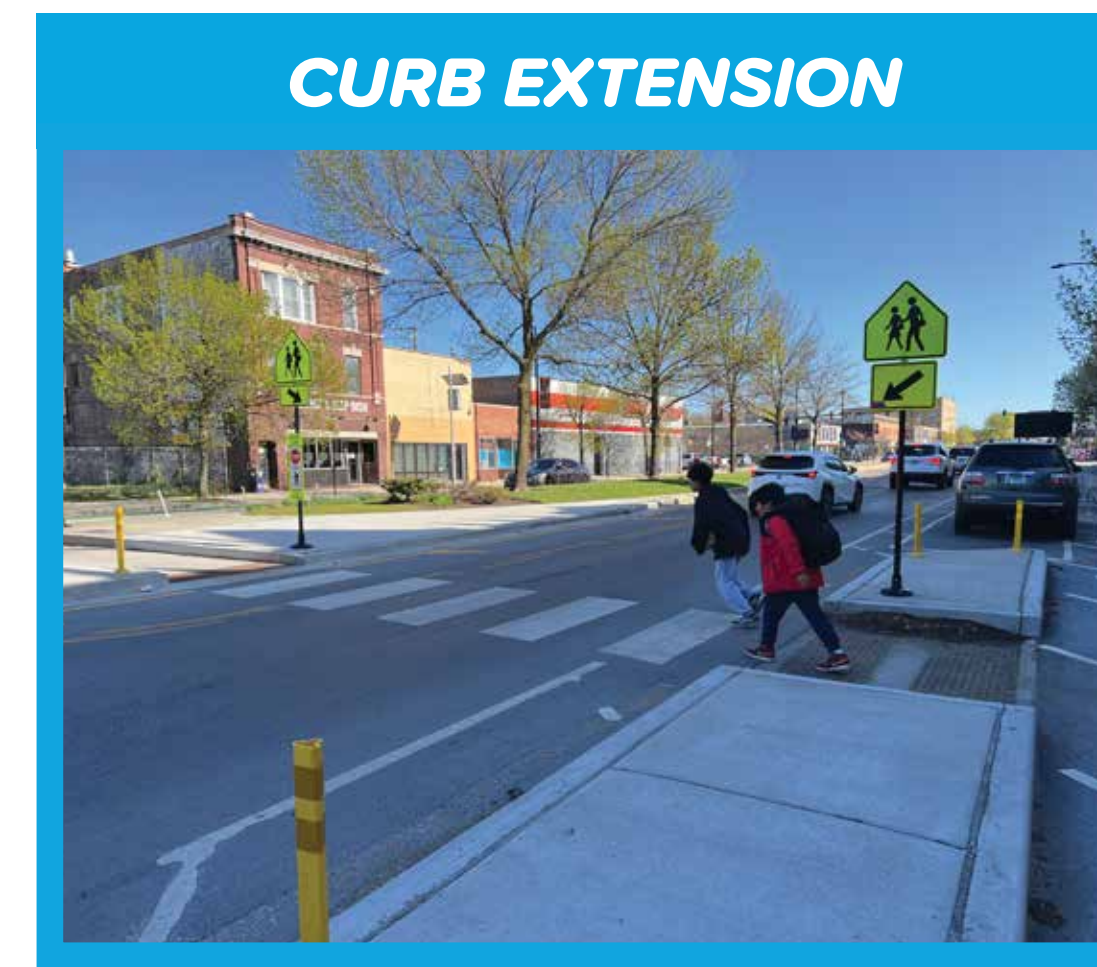
REFUGE ISLAND

- Provides a shorter distance for people walking across Archer
- Allows people walking to navigate one direction of traffic at a time
- Improved visibility of people walking
- Encourages safer, more consistent vehicle travel speeds



PROTECTED BIKE LANE

- Reduces the number of people riding bikes and scooters on the sidewalk
- Promotes a safer, calmer, and better organized street by providing more space between people walking and driving
- Provides a low-stress route for people biking
- Reduce parking and loading in the bike lane



CURB EXTENSION

- Widens the sidewalk with more space for people walking
- Reduces the distance for people walking across Archer
- Improved visibility between people walking and cars & trucks
- Reduces turning car speeds



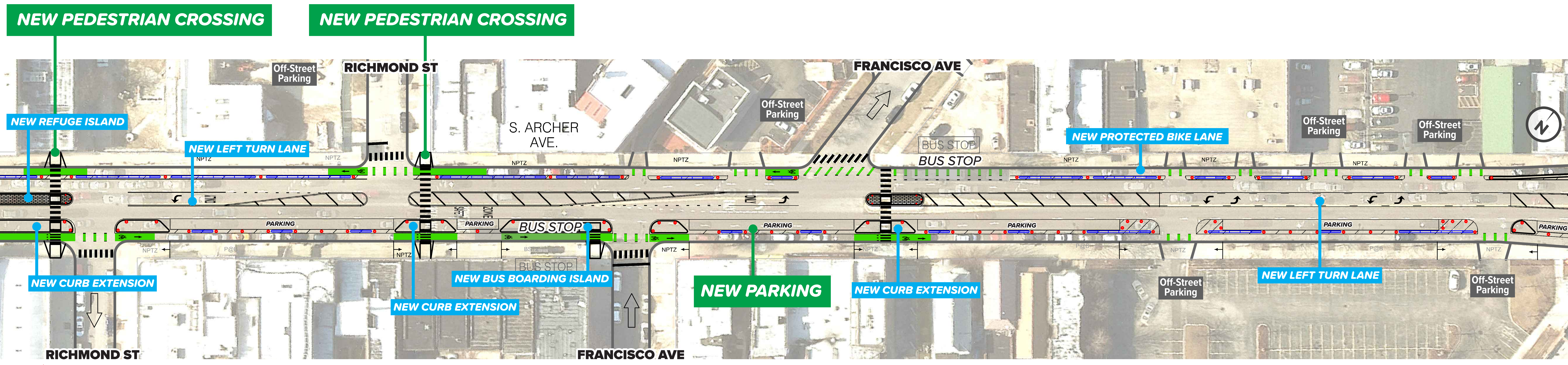
LEFT TURN LANE

- Dedicated turn lanes to improve safety and organization
- Reduced number of lanes having to turn across
- Provides a dedicated lane for through traffic
- Reduces cars weaving in and out of lanes
- Creates consistent and predictable travel lanes that will eliminate disruptions from turning cars



BUS BOARDING ISLAND

- Reduces bus travel time by minimizing boarding time
- Provides dedicated space to wait, away from busy sidewalks
- Improved bus operations
- Improved visibility between people walking and cars & trucks



Contact us at: [completestreets@cityofchicago.org](mailto:completestreets@cityofchicago.org)

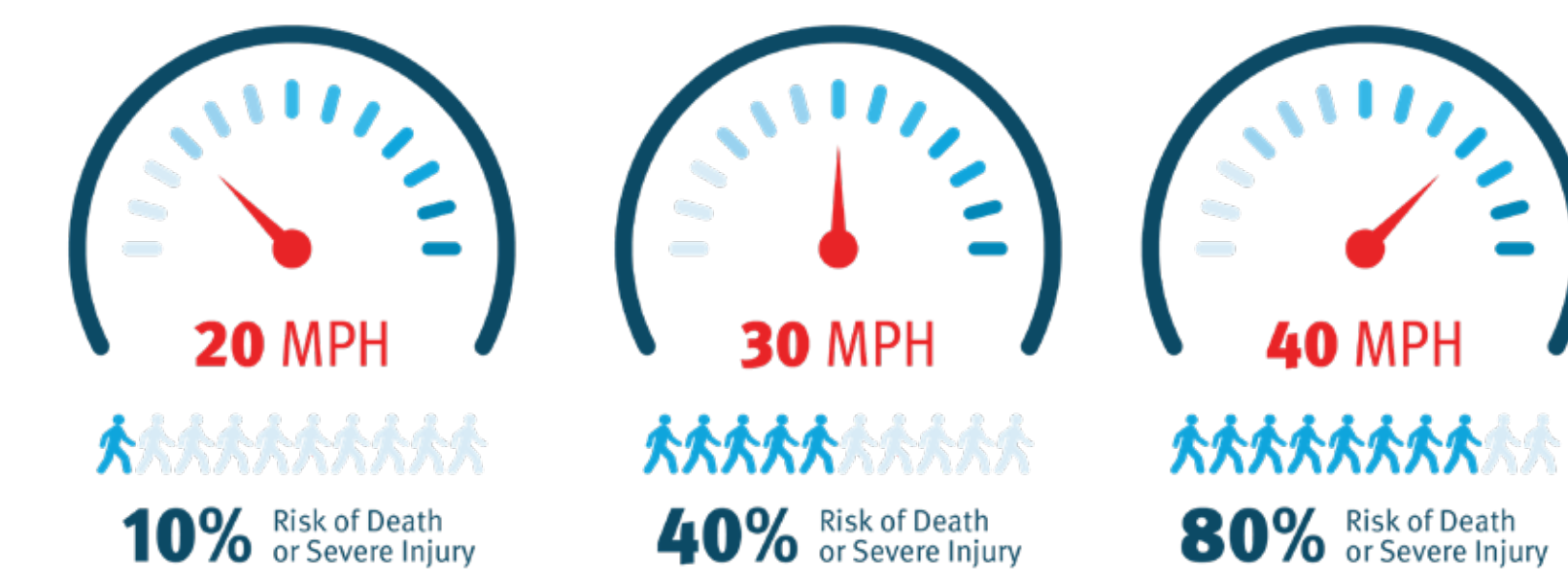
Write down your comments:

To find more information about projects, visit or scan: [chicago.gov/CompleteStreets](http://chicago.gov/CompleteStreets)

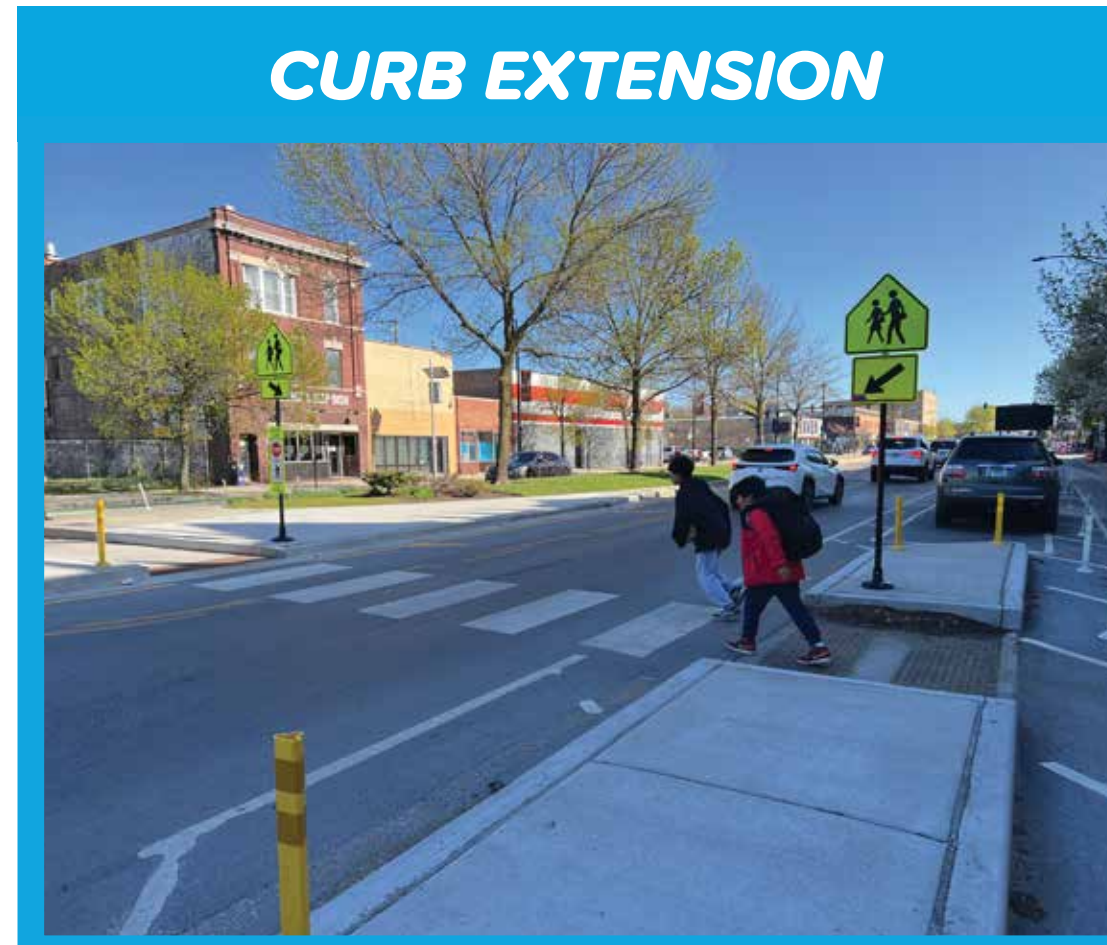




# SAFETY IMPROVEMENTS: ARCHER: 47TH TO WESTERN



## SAFETY ELEMENTS ON THIS PAGE:



- Widens the sidewalk with more space for people walking
- Reduces the distance for people walking across Archer
- Improved visibility between people walking and cars & trucks
- Reduces turning car speeds



- Reduces the number of people riding bikes and scooters on the sidewalk
- Promotes a safer, calmer, and better organized street by providing more space between people walking and driving
- Provides a low-stress route for people biking
- Reduce parking and loading in the bike lane

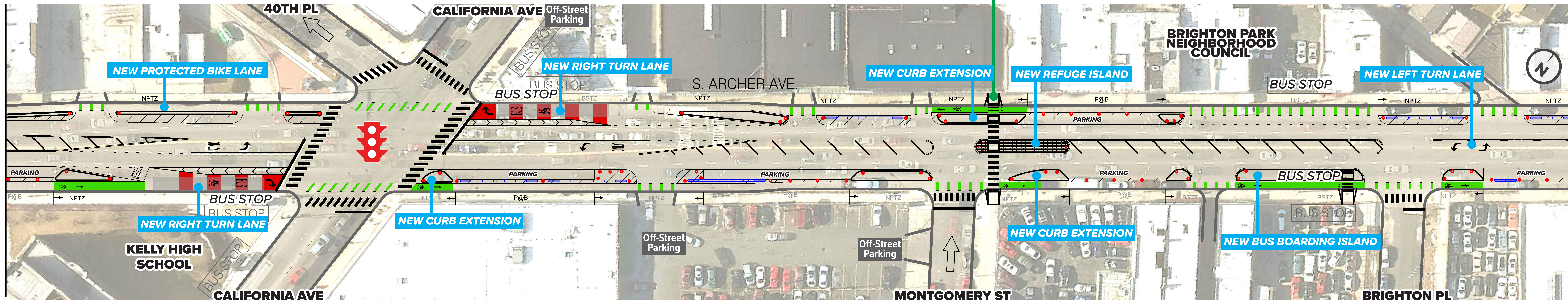


- Reduces bus travel time by minimizing boarding time
- Provides dedicated space to wait, away from busy sidewalks
- Improved bus operations
- Improved visibility between people walking and cars & trucks



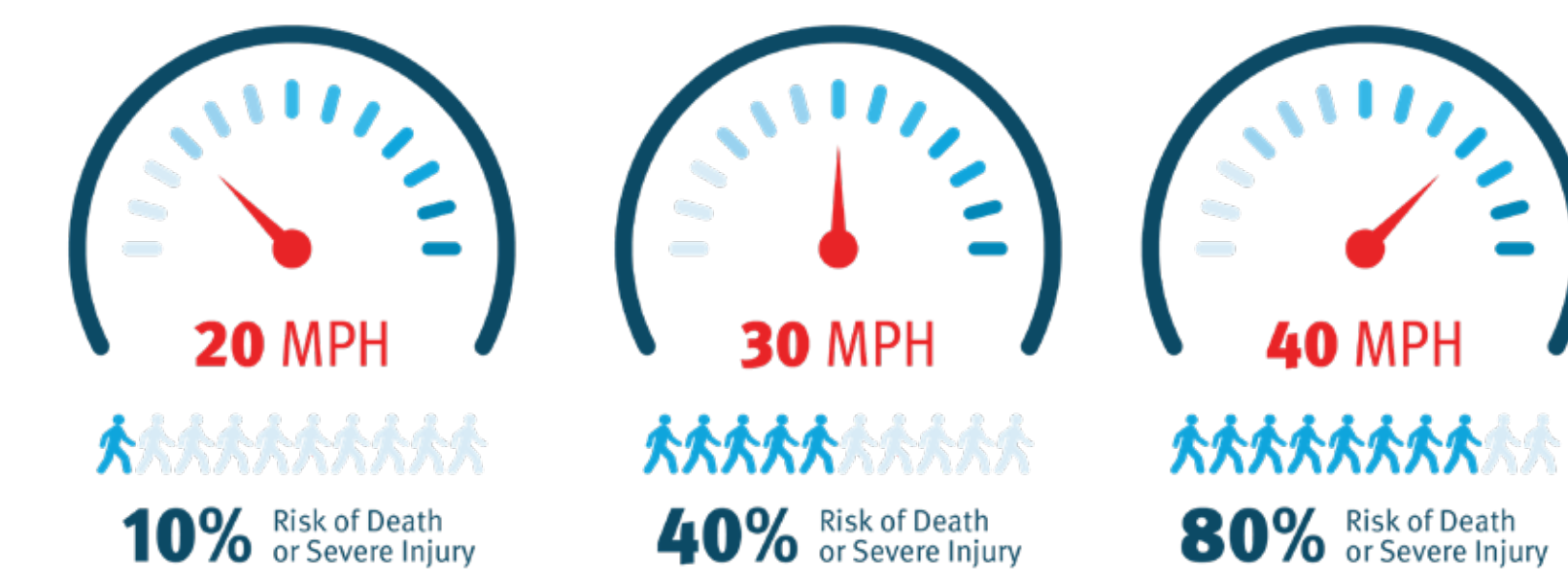
- Dedicated turn lanes to improve safety and organization
- Reduced number of lanes having to turn across
- Provides a dedicated lane for through traffic
- Reduces cars weaving in and out of lanes
- Creates consistent and predictable travel lanes that will eliminate disruptions from turning cars

## NEW PEDESTRIAN CROSSING





# SAFETY IMPROVEMENTS: ARCHER: 47TH TO WESTERN



## SAFETY ELEMENTS ON THIS PAGE:



REFUGE ISLAND

- Provides a shorter distance for people walking across Archer
- Allows people walking to navigate one direction of traffic at a time
- Improved visibility of people walking
- Encourages safer, more consistent vehicle travel speeds



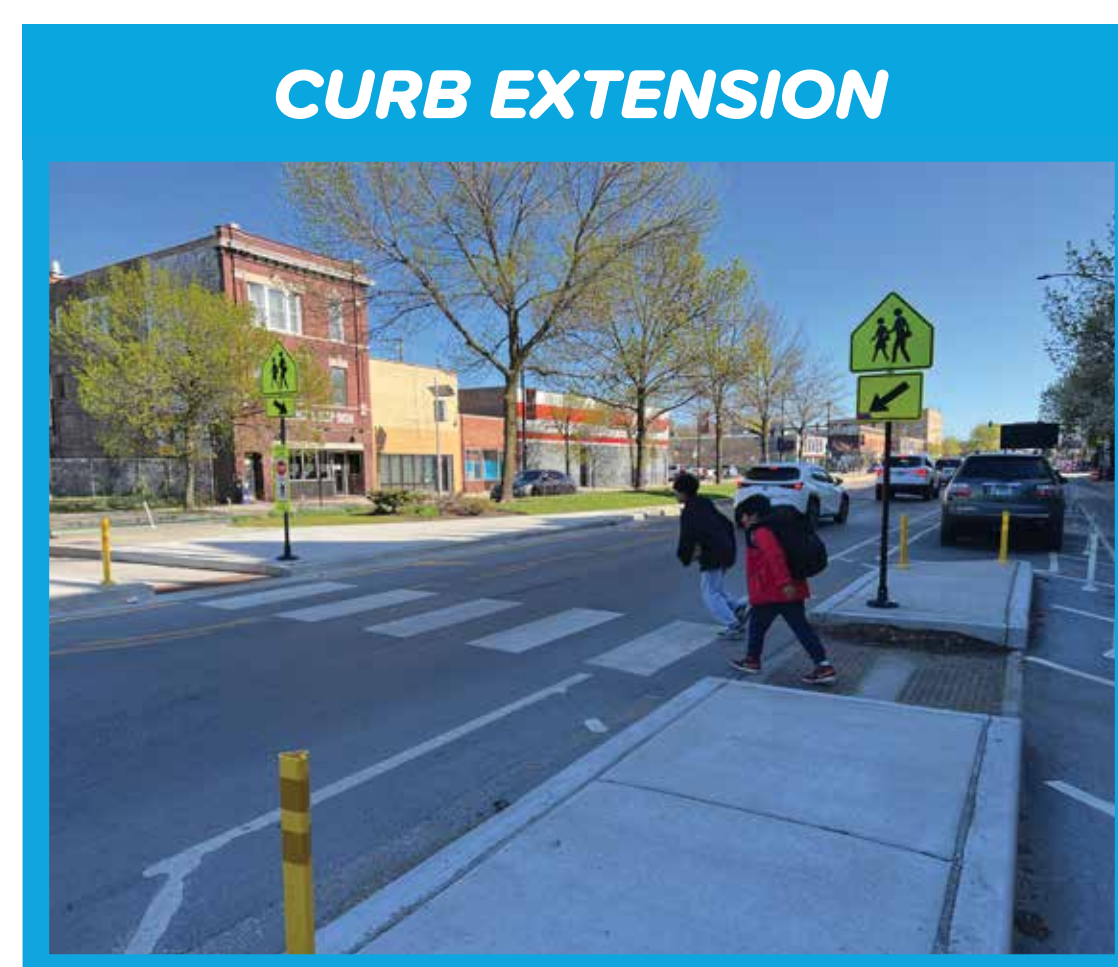
PROTECTED BIKE LANE

- Reduces the number of people riding bikes and scooters on the sidewalk
- Promotes a safer, calmer, and better organized street by providing more space between people walking and driving
- Provides a low-stress route for people biking
- Reduce parking and loading in the bike lane



BUS BOARDING ISLAND

- Reduces bus travel time by minimizing boarding time
- Provides dedicated space to wait, away from busy sidewalks
- Improved bus operations
- Improved visibility between people walking and cars & trucks



CURB EXTENSION

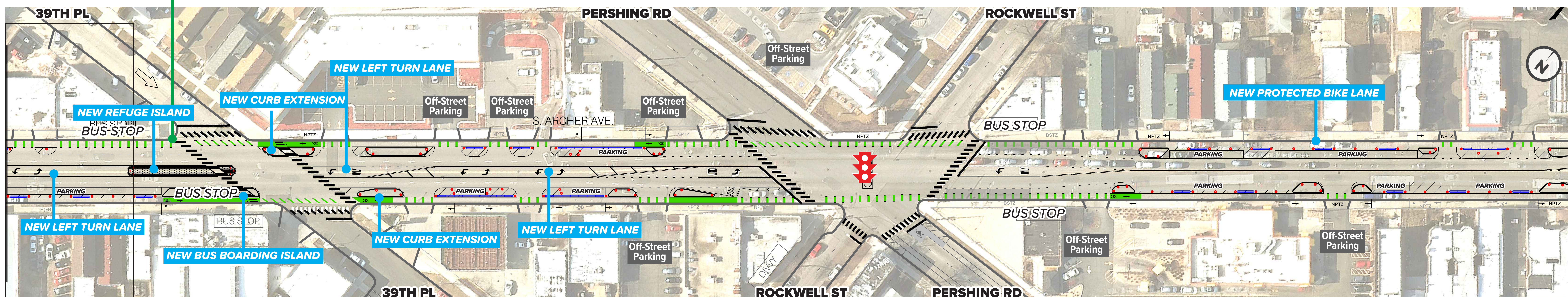
- Widens the sidewalk with more space for people walking
- Reduces the distance for people walking across Archer
- Improved visibility between people walking and cars & trucks
- Reduces turning car speeds



LEFT TURN LANE

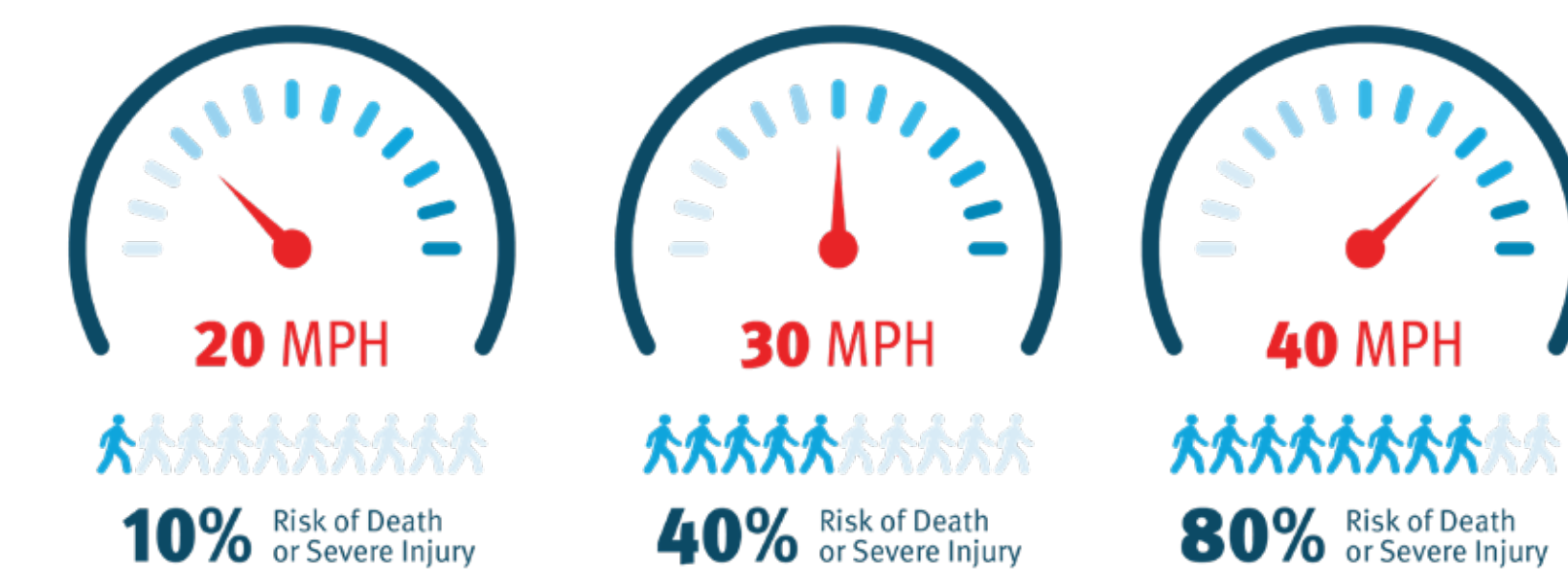
- Dedicated turn lanes to improve safety and organization
- Reduced number of lanes having to turn across
- Provides a dedicated lane for through traffic
- Reduces cars weaving in and out of lanes
- Creates consistent and predictable travel lanes that will eliminate disruptions from turning cars

## NEW PEDESTRIAN CROSSING

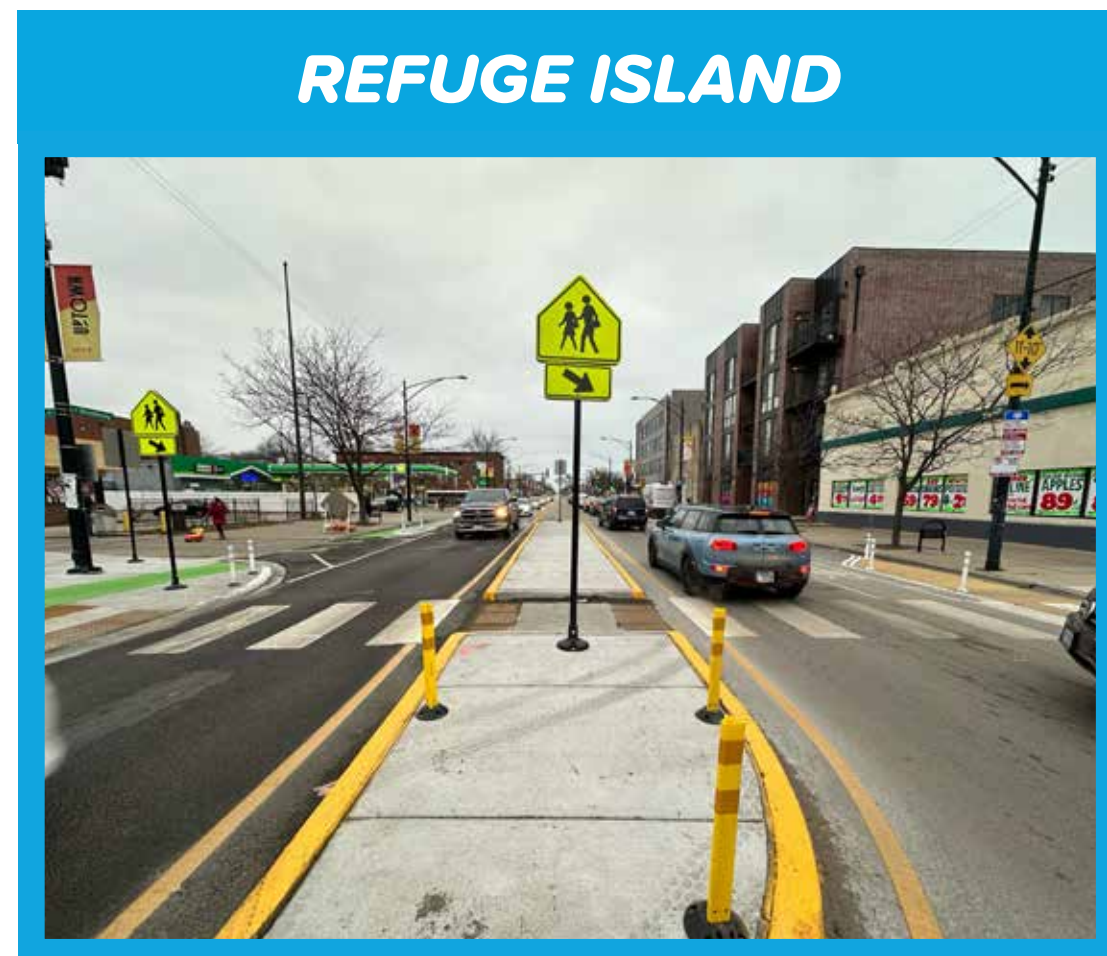




# SAFETY IMPROVEMENTS: ARCHER: 47TH TO WESTERN



## SAFETY ELEMENTS ON THIS PAGE:



REFUGE ISLAND

- Provides a shorter distance for people walking across Archer
- Allows people walking to navigate one direction of traffic at a time
- Improved visibility of people walking
- Encourages safer, more consistent vehicle travel speeds



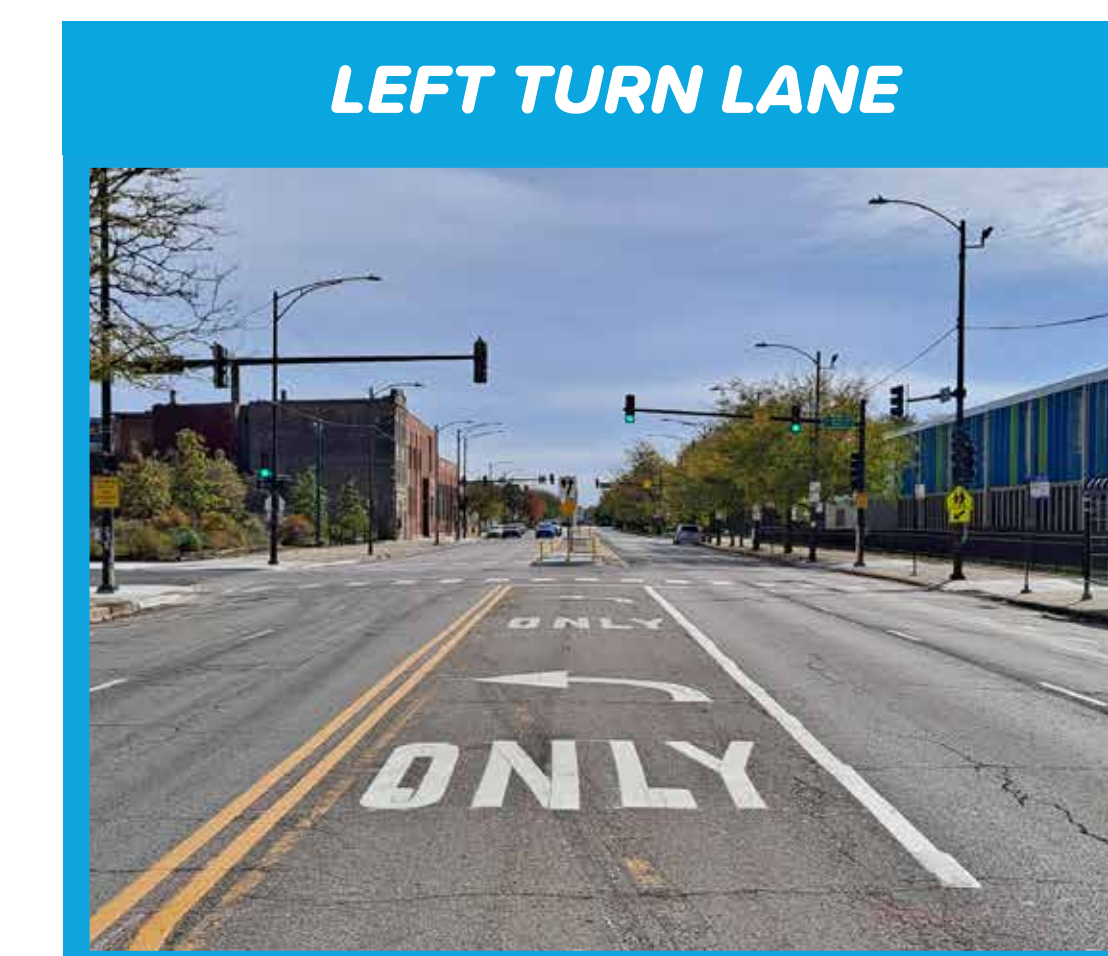
PROTECTED BIKE LANE

- Reduces the number of people riding bikes and scooters on the sidewalk
- Promotes a safer, calmer, and better organized street by providing more space between people walking and driving
- Provides a low-stress route for people biking
- Reduce parking and loading in the bike lane



SLIP LANE CLOSURE

- Simplifies the intersection
- Reduces conflicts between cars and people walking
- Provides more space for people walking



LEFT TURN LANE

- Dedicated turn lanes to improve safety and organization
- Reduced number of lanes having to turn across
- Provides a dedicated lane for through traffic
- Reduces cars weaving in and out of lanes
- Creates consistent and predictable travel lanes that will eliminate disruptions from turning cars

