



Syndemic Infectious Disease Bureau Provider Conference

Syndemics: Intersecting Challenges and Integrated Solutions

Dave Kern, Deputy Commissioner (he/him)

June 27, 2024

Defining Syndemic

- Synergistically interacting epidemics / population-level clustering of social and health problems.
 - 2 or more diseases or health conditions cluster within a population.
 - Contextual and social factors create conditions for clustering, like those associated with SDoH.
 - Results in adverse disease / health condition interactions – biological, social, or behavioral – increasing health burden of the affected population.

Disclosure

Disclosure:

Presenter has no financial interest to disclose. This continuing education activity is managed by The St. Louis STI/HIV Prevention Training Center and accredited by Missouri State Medical Association (MSMA) in cooperation with the Chicago Department of Public Health.

Data / Epi Context – People Matter

- In Chicago, cisgender males who engage in male-to-male sexual contact accounted for a plurality of new HIV diagnoses (56.5%), prevalent HIV cases (60.3%), and P&S cases (33.4%) in 2021, and of mpox cases (75%) in 2022.
- National data suggest persons who inject drugs account for most new acute HCV diagnoses and a large proportion of HBV diagnoses.

Data / Epi Context – HIV Co-infection, Chicago, 2021

Syndemic ID	# of Cases	# Co-I with HIV	% Co-I with HIV	% Co-I with HIV who are cis male	% Co-I with HIV who are cis MSM
TB	97	4	4.1%	N/A	N/A
HCV (new)	960	60	6.3%	96.7%	68.3%
HCV (prevalent)	21,498	1,006	4.7%	77.7%	35.0%
Chlamydia	27,404	1,524	5.6%	93.1%	82.1%
Gonorrhea	13,451	1,671	12.4%	96.2%	83.7%
P&S Syphilis	794	239	30.1%	97.1%	84.5%
Mpox	1,116	488	43.7%	93.0%	78.0%

HIV/HBV co-infection data are not available. Research suggests 5-10% of PLWH are co-infected with HBV.

<https://www.ncbi.nlm.nih.gov/pubmed/20158604>

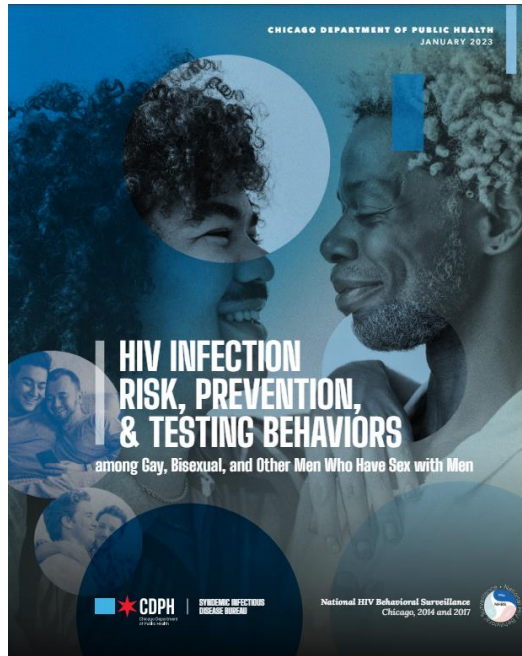
Data / Epi Context – HIV Co-infection, Chicago, 2021

Syndemic ID	# of Cases	# Co-I with HIV	% Co-I with HIV	% Co-I with HIV who are cis male	% Co-I with HIV who are cis MSM
TB	97	4	4.1%	N/A	N/A
HCV (new)	960	60	6.3%	96.7%	68.3%
HCV (prevalent)	21,498	1,006	4.7%	77.7%	35.0%
Chlamydia	27,404	1,524	5.6%	93.1%	82.1%
Gonorrhea	13,451	1,671	12.4%	96.2%	83.7%
P&S Syphilis	794	239	30.1%	97.1%	84.5%
Mpox	1,116	488	43.7%	93.0%	78.0%

HIV/HBV co-infection data are not available. Research suggests 5-10% of PLWH are co-infected with HBV.

<https://www.ncbi.nlm.nih.gov/pubmed/20158604>

Data / Epi Context – Other Conditions/Contexts



Healthy Chicago **data**book

Lesbian, Gay, Bisexual & Transgender Health

Chicago Department of Public Health
March 2018



Thank You!



@ChiPublicHealth



/ChicagoPublicHealth



HealthyChicago@CityofChicago.org



www.CityofChicago.org/Health