



# **Common Purpose:** **Enhancing Public Health Surveillance for a Safe Democratic National Convention (DNC)**

**Peter Ruestow, PhD**  
**Director of Epidemiology**  
**Disease Control / Health Protection**  
**Chicago Department of Public Health**  
**September 10, 2024**

## Learning Objectives

Upon completion of this seminar, you should be able to:

- Describe the planning structure for a national special security event.
- List elements to consider when developing an enhanced public health surveillance plan.
- Identify critical partners for public health threat detection during large-scale events.





**“To succeed in their mission, leaders of the new department [U.S. Department of Homeland Security] must change the culture of many diverse agencies -- directing all of them toward the principal objective of protecting the American people.”**

*- George W. Bush during remarks at the Signing of H.R. 5005 - the Homeland Security Act of 2002 (November 2002)*

# ★ 2024 Democratic National Convention



**When:** Monday 8/19/2024 - Thursday 8/22/2024

**Who:** Roughly 50,000 visitors, 20,000 media members, 5,500 delegates/guests

**Where:** Three primary areas within a five-mile radius:

- United Center – official proceedings and primetime programming
- McCormick Place – daytime party business
- Downtown hotels – for delegates



**The DNC was classified as a National Special Security Event (NSSE)**

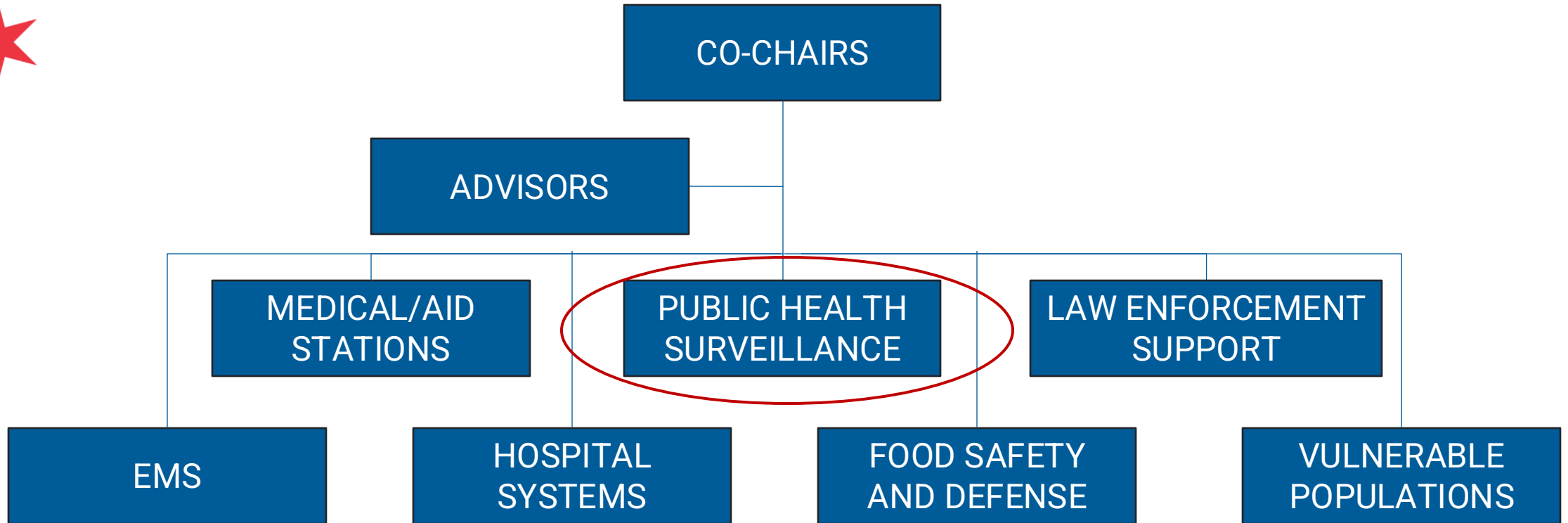
These are events that possess national or international significance and represent highly symbolic targets for terrorism.

# NSSE Planning Structure for the DNC



- SUBCOMMITTEES:**
- Airport
  - Airspace Security
  - Consequence Management
  - Counter Surveillance
  - Counter UAS
  - Credentialing
  - Crisis Management
  - Critical Infrastructure
  - Crowd Management
  - Explosive Device Response
  - Fire Life Safety HAZMAT
  - Geospatial
  - **Health and Medical**
  - Intelligence, Counter Terrorism
  - Interagency Communication
  - Legal
  - Logistics and Budget
  - Maritime Security
  - Community Impact
  - Public Affairs
  - VIP Hotels
  - Spectrum Deconfliction
  - Tactical
  - Training
  - Transportation and Traffic
  - Venues
  - VIP Protection

# DNC Health and Medical Subcommittee



## Health and Medical Subcommittee Mission Statement

To deliver a comprehensive plan to address all aspects of public health and medical services, to include the deployment of resources and contingency plans for a scalable response to any critical incident, while maintaining essential services to the public.



# DNC Public Health Surveillance Workgroup

## Purpose:

To establish an enhanced public health surveillance plan that describes systems and processes for detecting and assessing health threats to attendees and community members before, during, and after the DNC, ensuring timely and comprehensive response through effective data communication and dissemination.



**“Plans are worthless, but planning is everything.”**

*- referenced by **Dwight D. Eisenhower** during remarks at the National Defense Executive Reserve Conference*



# What assets and capabilities do we have, and where are the gaps?



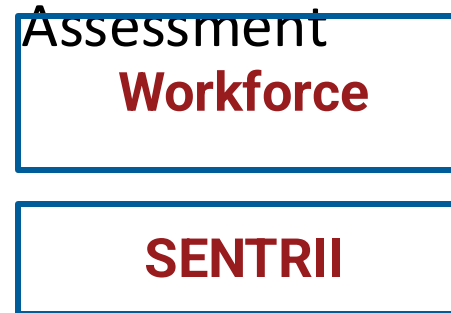
## Input

Data Sources



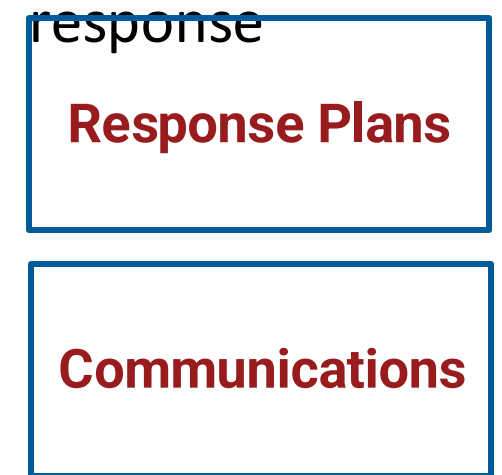
## Analysis

Threat



## Action

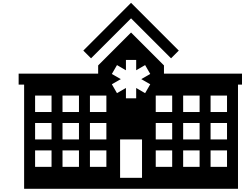
Public health



## Partnerships



# ★ Data Sources: Syndromic Surveillance



- 911 dispatch
- CHI 311 restaurant complaints
- IL Poison Center calls

- Venue medical stations (Cognito forms)

- EMS runs
- EMResource
- EMTrack

- ESSENCE/BioSense

# ★ Data Sources: ESSENCE/Biosense

Message to healthcare partners:

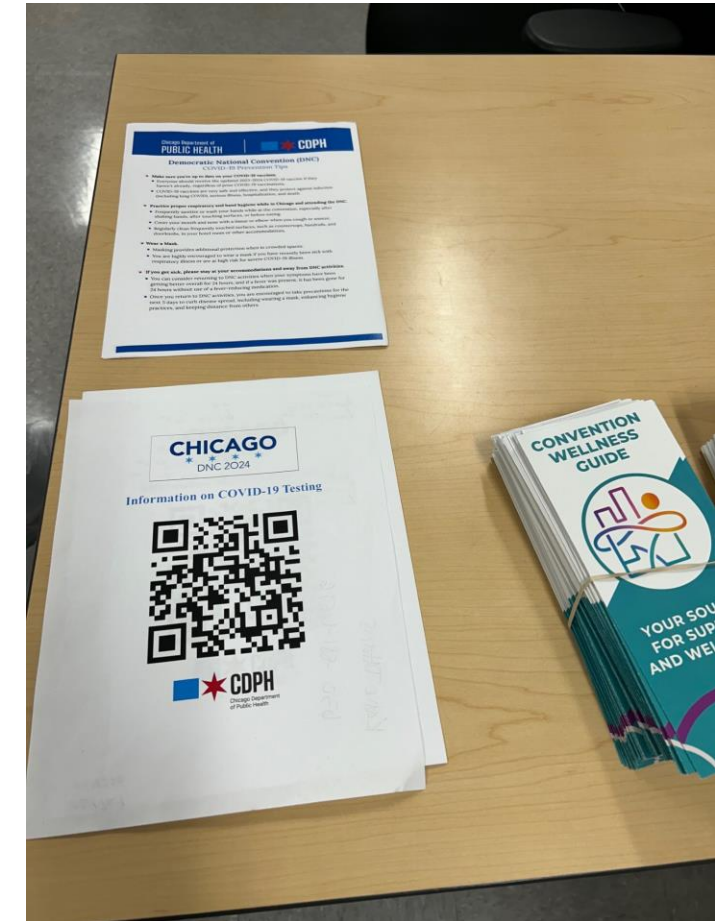
<p>★ Please tag/type 'DNC' in the triage note for any patient presenting from the Democratic National Convention</p> <p>Include convention attendees, staff, volunteers, protestors, anyone visiting Chicago to participate in DNC-related activities</p> <p>Utilize this triage tag from: 0700 Sunday 8/18/2024-1900 Friday 8/23/2024</p> <p><b>THANK YOU!</b></p>	<p>★</p> <div data-bbox="1523 549 1880 892"></div> <p>Scan for <b>EMResource Trainings</b></p> <div data-bbox="2058 549 2415 892"></div> <p>Scan for <b>EMTrack Trainings</b></p> <p>Or visit <a href="https://chscpr.org/educational-and-training-resources-library/">https://chscpr.org/educational-and-training-resources-library/</a></p> <p>If you need to update or change usernames or passwords, please contact Brandon Paetznick (<a href="mailto:brandon.paetznick@cityofchicago.org">brandon.paetznick@cityofchicago.org</a>) and IHA (<a href="mailto:chscpr@team-ihc.org">chscpr@team-ihc.org</a>)</p>
---	---

# Data Sources: Venue Medical Stations



## Objectives of Onsite Public Health Surveillance Teams

- Observe activity at medical stations for potential threats of public health concern
- Liaise between venues and PHEOC
- Initiate investigation and response if public health threat suspected
- Notify medical teams of public health threats (in coordination with PHEOC)
- Provide public health guidance
- Support EMTrack activities

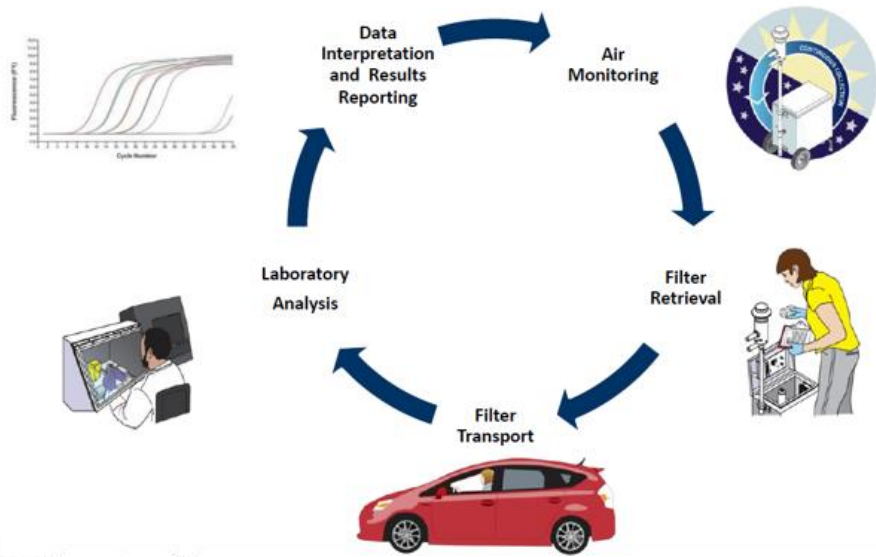


# Data Sources: Environmental Surveillance



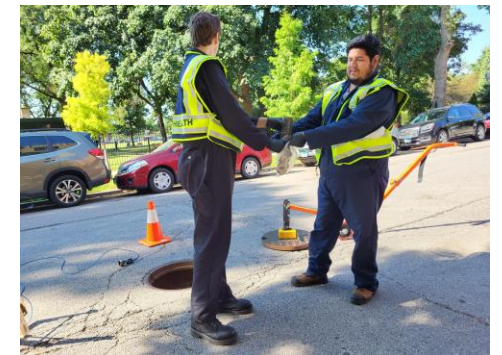
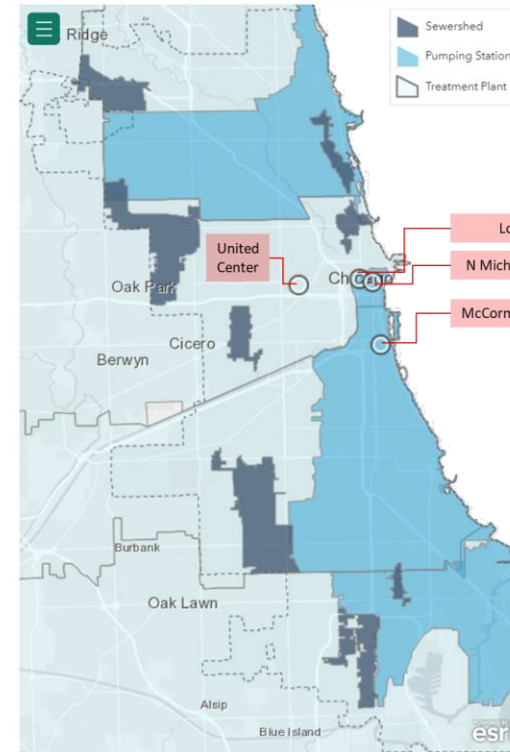
## BioWatch Program

Homeland Security – Office of Health Affairs (OHA)  
counter terrorism program started in 2003 by  
presidential initiative



Nationwide air monitoring system for select biological agents  
Federally managed but locally operated  
Collaboration with local and state officials

## Wastewater Testing



Two new DNC venue-adjacent sites selected  
New targets: norovirus, Salmonella, Shiga toxin-producing E. Coli  
Sampling cadence increased to once per day during the DNC

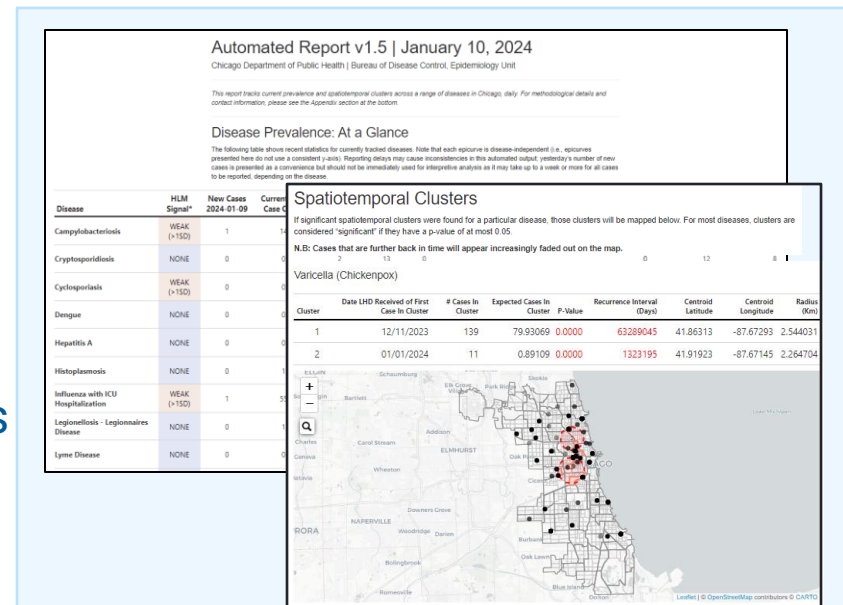
# Threat Assessment: SENTRII

(Surveillance for Emerging and Novel Threats and Reportable Illnesses and Injuries)



Purpose of this system is to generate situational awareness and intelligence around acute health threats in Chicago to facilitate decision-making at CDPH

- Centralized surveillance data
- Standardized data processing
- Interactive data summaries
- Insights through routine analytics



- Web-based, easy-to-use interface
- Embeds dashboards and summary
- Must be on City network to access
- Flexible, scalable design

**System mitigates the following gaps observed during the COVID-19 pandemic:**

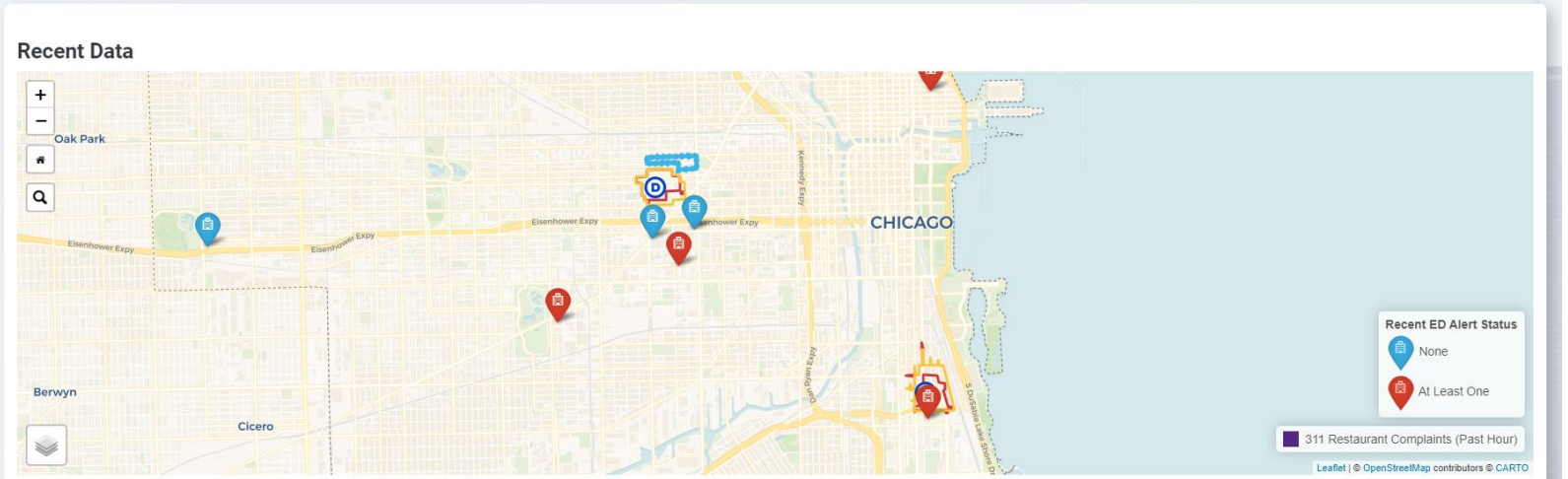
- Epidemiologists having to spend too much time on routine data processing and cleaning
- Lack of analysis and data insights (beyond simple summary) to inform decision-making
- Delays in detection of acute health threats due to lack of staff bandwidth to monitor data

# Threat Assessment: SENTRII

(Surveillance for Emerging and Novel Threats and Reportable Illnesses and Injuries)

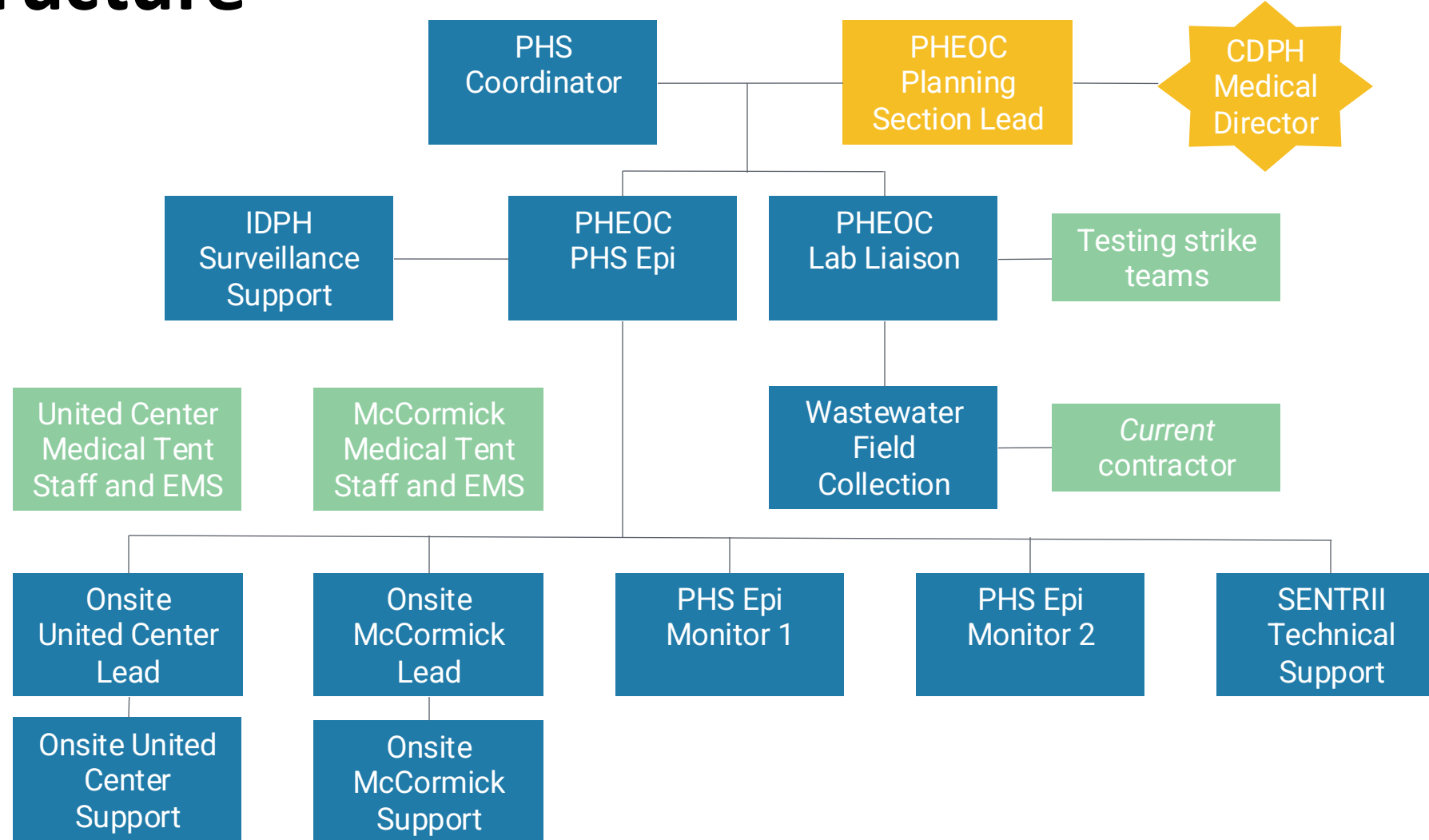


- SENTRII Home
- West Nile Virus Surveillance
- DNC 2024**
- Epi investigations
- Syndromic Surveillance
- CluDet view - INEDSS Linelist
- Medical Aid Tents
- Healthcare Capacity
- Mortality Dashboard
- Wastewater
- Poison Center
- Global Surveillance
- Enteric Diseases
- Respiratory Surveillance
- About SENTRII



©2024  
CDPH  
Disease Control Bureau  
Epidemiology Program

# DNC Public Health Surveillance Staffing Structure







# Communications: Internal Across Surveillance Teams

- Microsoft Teams

DP DNC Public Health Surveillance

General

Activation

Discussion - Medical Stations

Discussion - SENTRII System Support

SME - EMTrack

SME - ESSENCE

SME - Lab\_Wastewater

SME - Poison Center Calls

SME - Reportable Conditions

SME - WindyGrid (911, 311)

Training

[See all channels](#)

DP Activation Posts Files Notes +

Peter Dejonge 8/2 10:52 AM Edited

DATE (mmddyyyy), TIME (24h) - [your initials] - title of incident with REDCap ID

Include a brief description of the incident here along with the data source used to identify the incident. Be sure to include the REDCap ID in the title of the post.

Peter Dejonge 8/2 10:55 AM Edited

DATE(mmddyyyy), TIME (24h) - [your initials] - Here, you can include follow-up details about the incident as it is investigated (e.g., new information, personnel changes, other departments involved, etc.). The priority is to include follow-up details within the corresponding REDCap incident (use the **Record Status Dashboard** in REDCap to add follow-up information).

*This message has been deleted.*

PR Reply

- REDCap

CDPH  
SENTRII

Epi investigations

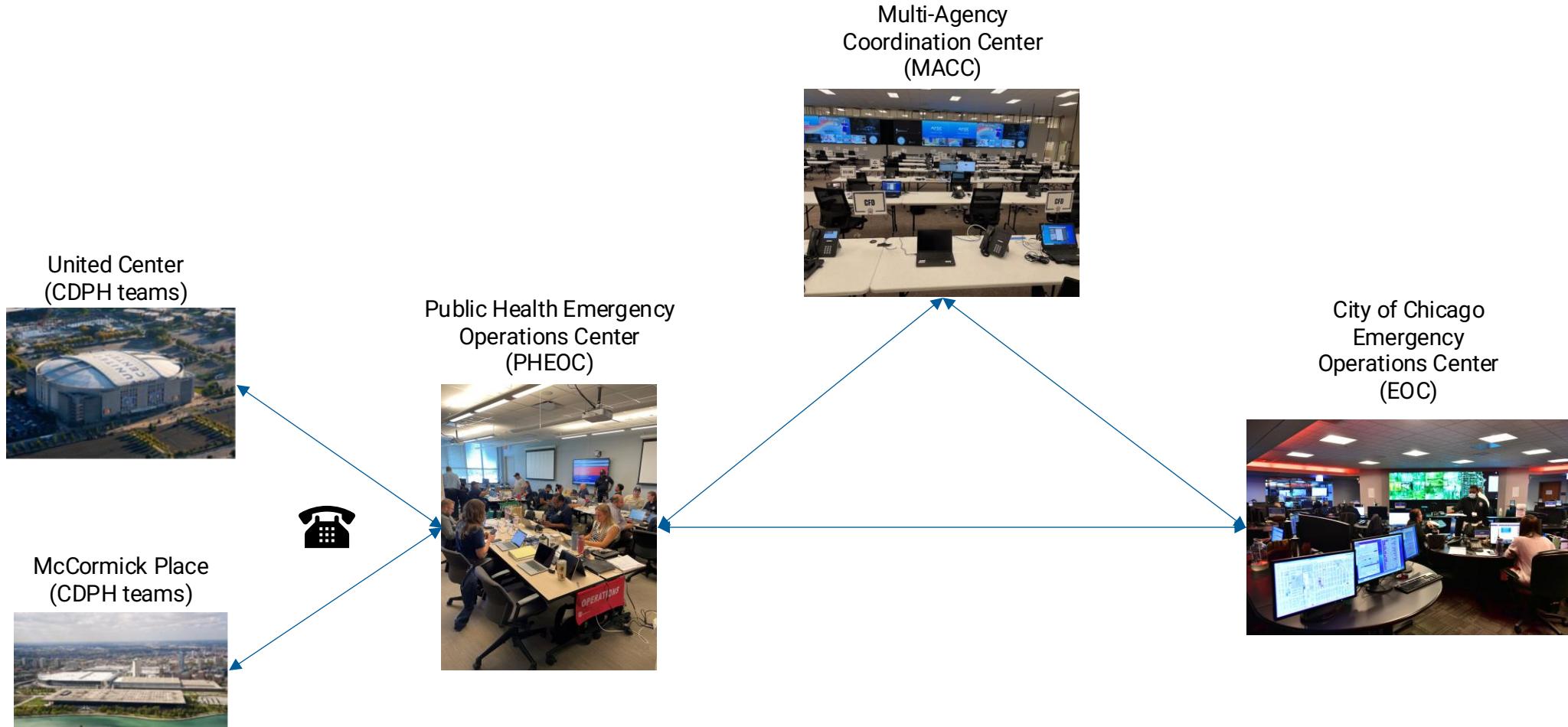
Report Incident

CDPH  
Chicago Department of Public Health

Initial Incident Report

Please complete the following questions to establish a record for an incident of interest during the 2024 Democratic National Convention response.

# ★ Communications: External Across Partners



# Response: CBRN



PHILIS: Portable High-throughput Integrated Laboratory Identification System

- On-site analysis for:
  - Chemical, biological, radiological, and nuclear (CBRN) incident response actions
  - Accidental chemical releases
  - Natural disasters



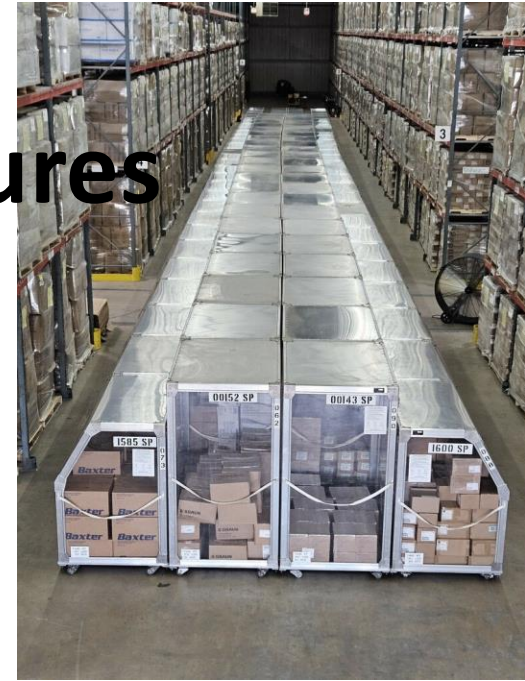
Toolkits for rapid investigation

Assessment of Chemical Exposures (ACE) Program



# ★ Response: Medical Countermeasures

**ASPR** Administration for Strategic Preparedness & Response



# Training and Exercise



## Healthcare System

- Radiation and Chemical Annex Seminar: 1/16/24
- Chemical Tabletop Exercise: 4/16/24
- Radiation Full-Scale Exercise: 6/6/24

## Public Health Surveillance Workshop Series

- Foodborne illness threats
- Bioterrorism Category A threats
- Non-communicable (heat-related, chemical) threats
- Communications systems

## Other

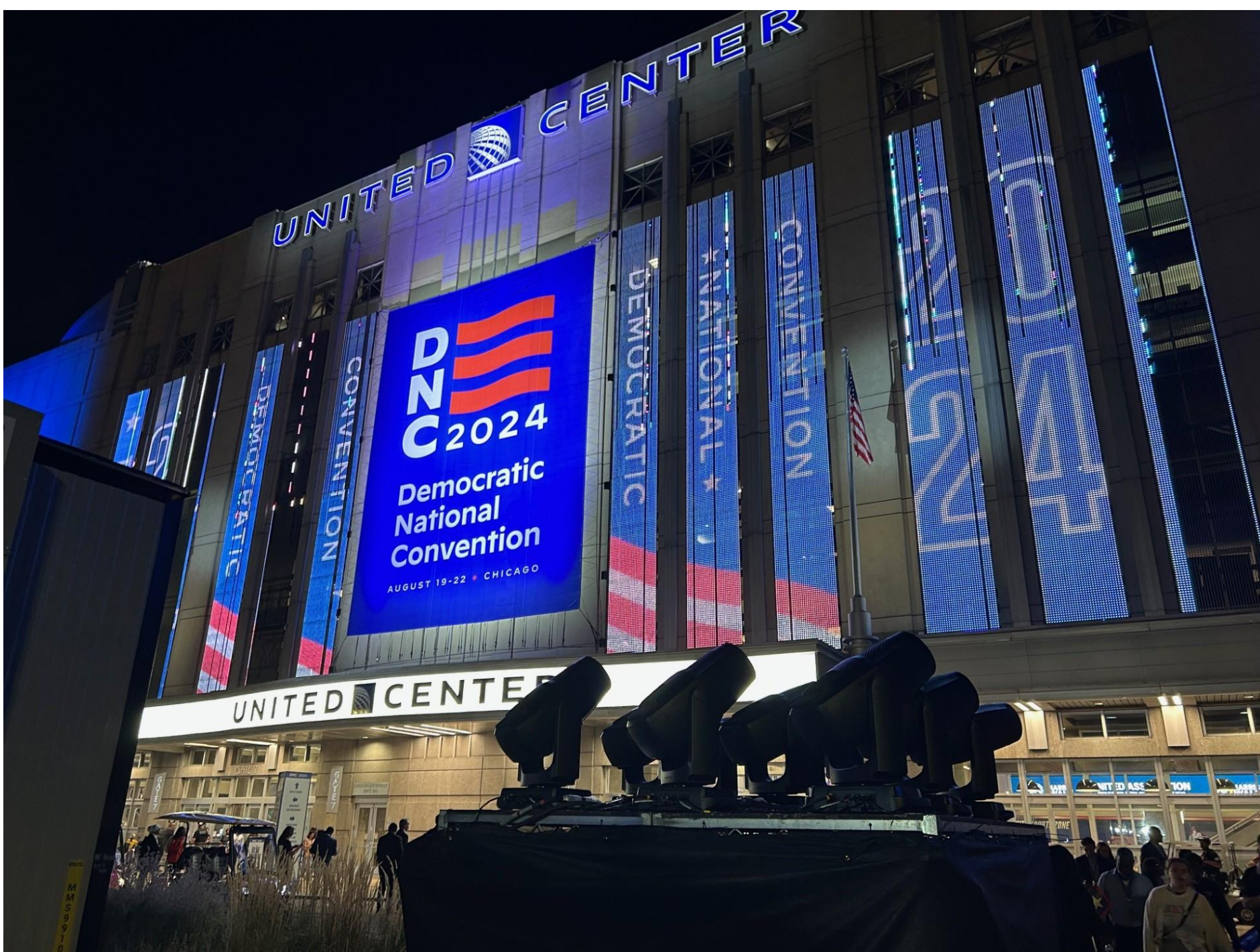
- Category A Bioterrorism Agents/Disease webinar for frontline providers: 7/18/24
- EPA Public Health Unit Tabletop Exercise: 8/1/24





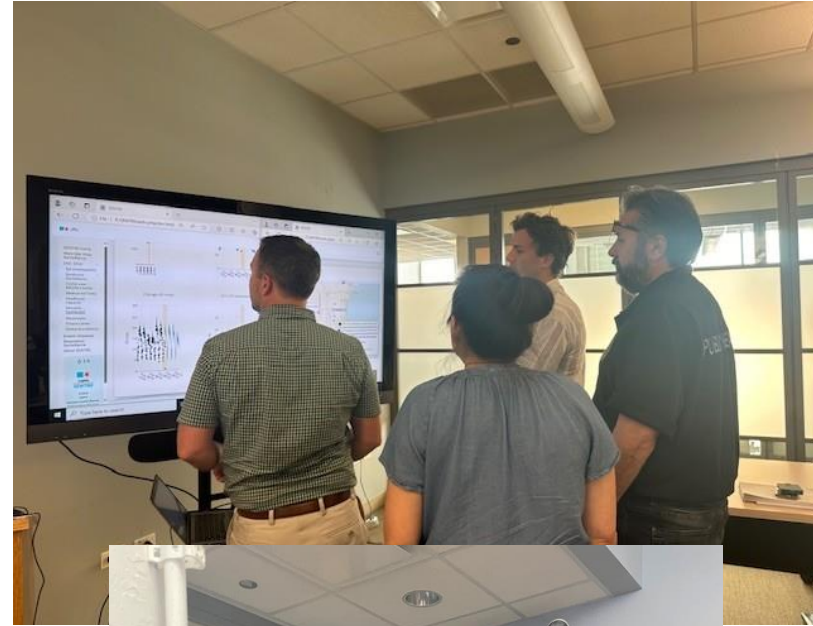
**“For to reach a port, we must sail—sail, not tie at anchor—sail, not drift.”**

*- remarks made by **Franklin D. Roosevelt** during a “fireside chat,” April 1938*



# PHEOC In Action

Strong communications across partners



Reviewing data displayed in SENTRII



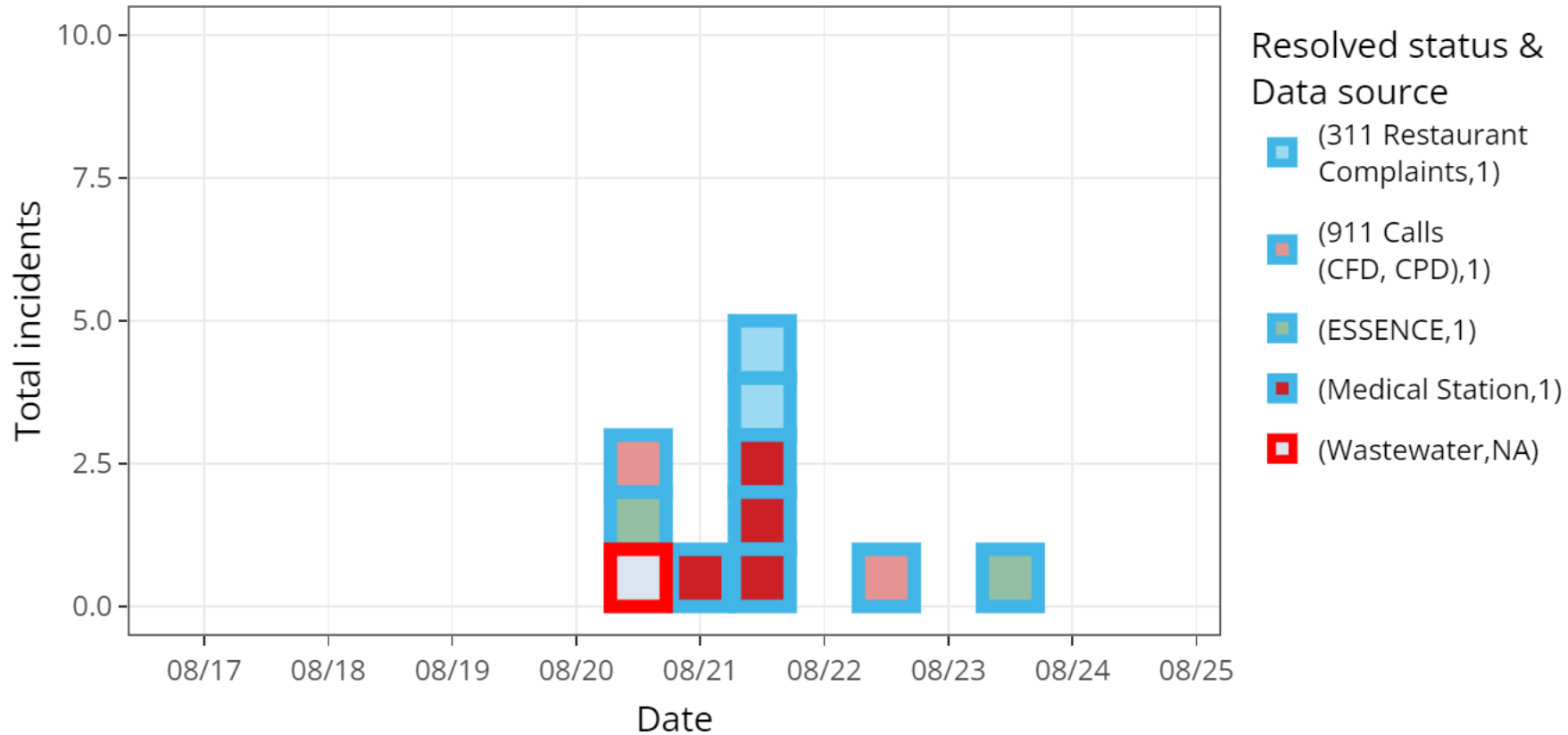
Field teams returning from the United Center





# Some Signals Investigated, No Public Health Threats Detected

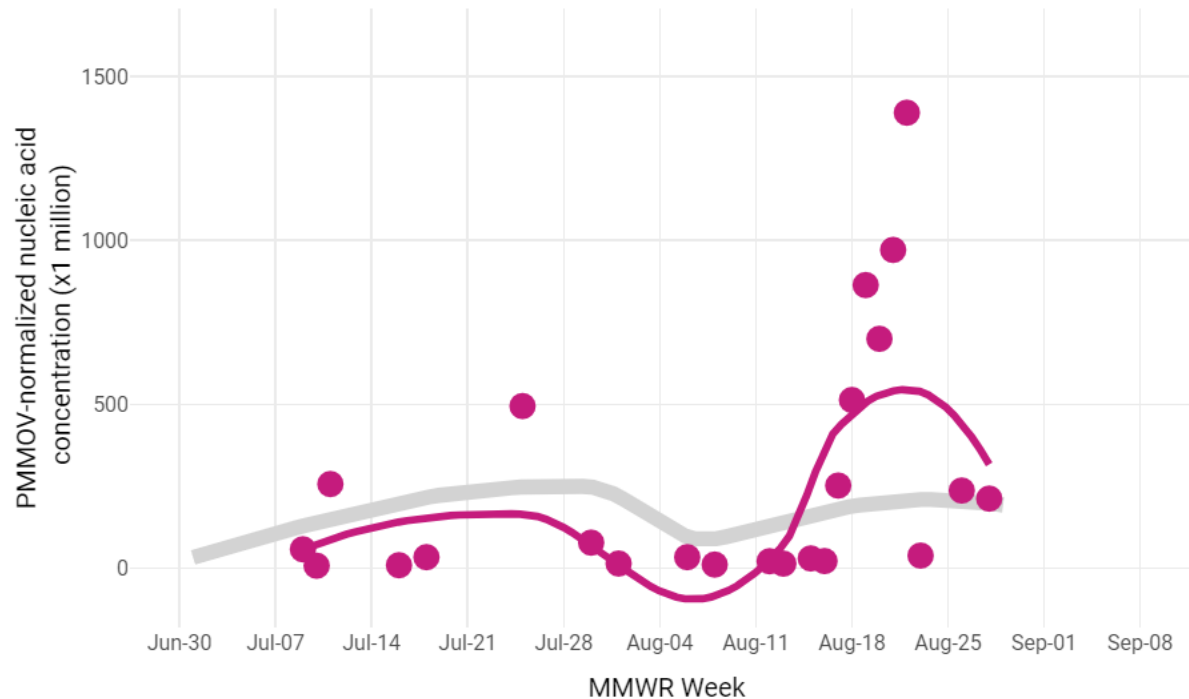
Epidemiologic investigations - DNC 2024





# Salmonella concentration increased at the McCormick sampling site from the weekend prior through Wednesday (with a sharp dropoff on the last day of the event, Thursday)

Detected Concentrations of Salmonella in Weekly Wastewater Samples



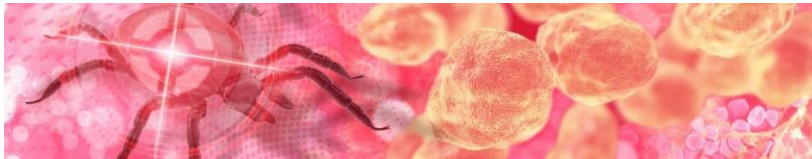
- No clinical indicators corroborate this increase
- Samples sent to the Regional Innovative Public Health Laboratory (RIPHL) for genetic sequencing
- Investigating the role of environmental contamination (e.g., food preparation) in these findings

# ★ Other Excitement

## Chicago Tribune

### Police investigating maggots in breakfast for Indiana's DNC delegates

Police are investigating an incident where maggots were dropped Wednesday into the breakfast at the Fairmont Chicago, where the 88 Indiana delegates were invited to eat ahead of the day's events at the Democratic National Convention.





**“We are the ones we've been waiting for. We are the change that we seek.”**

*- remarks made by **Barack Obama** during a campaign speech, February 2008*

# Acknowledgements



## Public Health Surveillance Planning and Operations

- Peter DeJonge, CDC
- Kimberly Gressick, CDC
- Amy Nham, CDC
- Karrie-Ann Toews, CDC
- Aleksa Anderson, CDPH
- Kendall Anderson, CDPH
- Keenan Bailey, CDPH
- Rachel Berkowitz, CDPH
- Brandon Bernhardt, CDPH
- Stephanie Black, CDPH
- Isabel Chung, CDPH
- Cathy Cortes, CDPH
- Paul Davis, CDPH
- Saadeh Ewaidah, CDPH
- Joel Flax-Hatch, CDPH
- Alexandra Gagner, CDPH
- Janna Kerins, CDPH
- Alyse Kittner, CDPH
- Katie Kleimola, CDPH
- Jepchumba Koech, CDPH
- Colin Korban, CDPH
- Aaron Krusniak, CDPH
- Veronica McSorley, CDPH
- Quentin Moore, CDPH
- Dolores Nobles-Knight, CDPH
- Palak Panchal, CDPH
- Tulsiram Prathapam, CDPH
- Peter Ruestow, CDPH
- Usha Samala, CDPH
- Yaa Simpson, CDPH
- Alexander Sloboda, CDPH
- Shamika Smith, CDPH
- Daphne Smith, CDPH
- Bethlehem Solomon, CDPH
- Karrie-Ann Toews, CDPH
- Deniz Yuce, CDPH
- Graham Briggs, IDPH
- Matthew Leslie, IDPH
- Jesse Nuss, IDPH
- Ann Wiringa, IDPH



# Acknowledgements



## NSSE Health and Medical Subcommittee Workgroup Leads

- Anthony Pugliese NRP, USSS
- Chief Juan Hernandez, CFD
- Chief Gregory Stinnett, CFD
- Christopher Shields, CDPH
- Molly Gabaldo, CDPH
- KC Booth, IMMC
- Tony Voirin, ASPR
- Derek Sakris, ASPR
- Todd Stankewicz, ASPR
- Peter Ruestow, CDPH
- Veronica (Eloesa) McSorley, CDPH
- Nicholas Cozzi, RUSH
- George Chiampas, Northwestern
- Virginia Castenedas, CDPH
- Anita Brazil, CDPH
- Frankie Shipman-Amuwo, DFSS

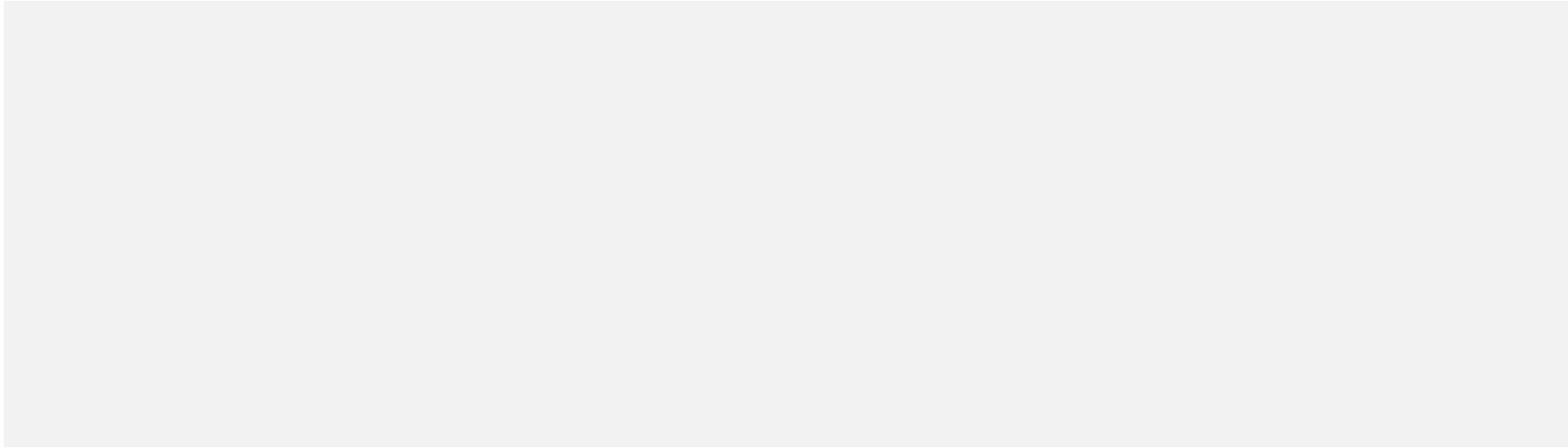
## NSSE Public Health Surveillance Workgroup

- Stephanie Black, CDPH
- Graham Briggs, IDPH
- Peter DeJonge, CDC
- Joanne Farrell, CFD
- Stacey Hoferka, IDPH
- Janna Kerins, CDPH
- Alyse Kittner, CDPH
- Chol Mabil, CDPH
- Veronica (Eloesa) McSorley, CDPH
- Massimo Pacilli, CDPH
- Peter Ruestow, CDPH
- Faye Thanas, CDPH

## Special thanks to:

- Christopher Shields, CDPH
- Maribel Chavez-Torres, CDPH
- Molly Gabaldo, CDPH
- Michelle Funk, CDPH
- Brandon Paetznik, CDPH
- Dorothy Foulkes, CDPH
- Emma Weber, CDPH
- Rachel Beham, CDPH
- Sarah Murray, CDPH
- Emily Zaran, CDPH
- Micah Burkey, CDPH
- Rachel Poretzky, UIC
- Carrie Carlson, OEMC
- Mark Kiely, CFD
- Michael Wahl, IL Poison Center
- Joshua Geltz, IDPH Laboratory





[Chicago.gov/Health](https://Chicago.gov/Health)



[HealthyChicago@cityofchicago.org](mailto:HealthyChicago@cityofchicago.org)



[@ChicagoPublicHealth](https://www.facebook.com/ChicagoPublicHealth)



[@ChiPublicHealth](https://twitter.com/ChiPublicHealth)