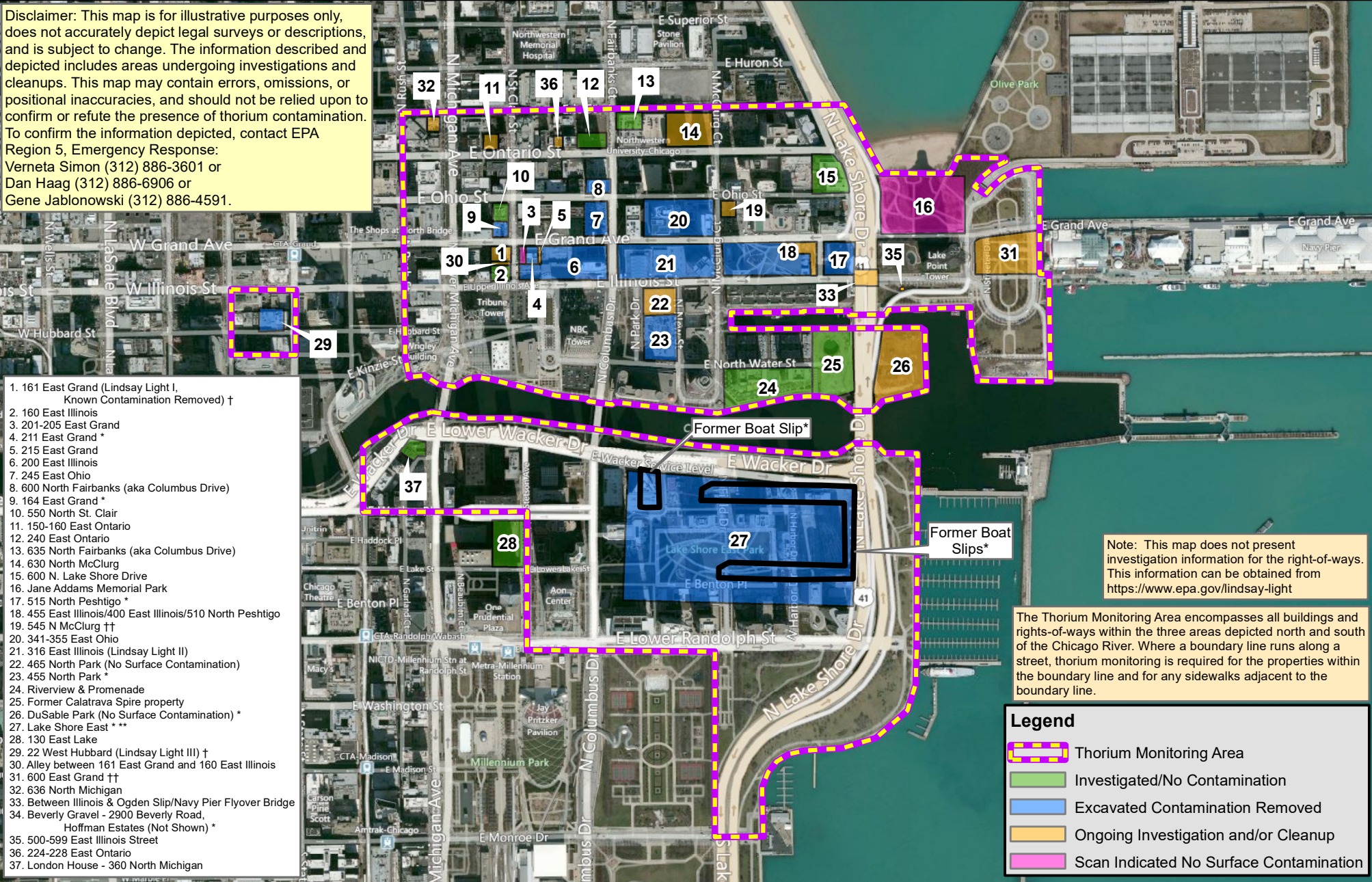


# Lindsay Light Streeterville Thorium Monitoring Area

Disclaimer: This map is for illustrative purposes only, does not accurately depict legal surveys or descriptions, and is subject to change. The information described and depicted includes areas undergoing investigations and cleanups. This map may contain errors, omissions, or positional inaccuracies, and should not be relied upon to confirm or refute the presence of thorium contamination. To confirm the information depicted, contact EPA Region 5, Emergency Response: Vernetta Simon (312) 886-3601 or Dan Haag (312) 886-6906 or Gene Jablonowski (312) 886-4591.

1. 161 East Grand (Lindsay Light I, Known Contamination Removed) †
2. 160 East Illinois
3. 201-205 East Grand
4. 211 East Grand \*
5. 215 East Grand
6. 200 East Illinois
7. 245 East Ohio
8. 600 North Fairbanks (aka Columbus Drive)
9. 164 East Grand \*
10. 550 North St. Clair
11. 150-160 East Ontario
12. 240 East Ontario
13. 635 North Fairbanks (aka Columbus Drive)
14. 630 North McClurg
15. 600 N. Lake Shore Drive
16. Jane Addams Memorial Park
17. 515 North Peshtigo \*
18. 455 East Illinois/400 East Illinois/510 North Peshtigo
19. 545 N McClurg ††
20. 341-355 East Ohio
21. 316 East Illinois (Lindsay Light II)
22. 465 North Park (No Surface Contamination)
23. 455 North Park \*
24. Riverview & Promenade
25. Former Calatrava Spire property
26. DuSable Park (No Surface Contamination) \*
27. Lake Shore East \*\*\*
28. 130 East Lake
29. 22 West Hubbard (Lindsay Light III) †
30. Alley between 161 East Grand and 160 East Illinois
31. 600 East Grand ††
32. 636 North Michigan
33. Between Illinois & Ogden Slip/Navy Pier Flyover Bridge
34. Beverly Gravel - 2900 Beverly Road, Hoffman Estates (Not Shown) \*
35. 500-599 East Illinois Street
36. 224-228 East Ontario
37. London House - 360 North Michigan

\*Deed restriction required due to uninvestigated or known contamination areas.  
 \*\*All surface contamination removed. Multiple properties within area have been cleaned up.  
 †Demolition monitoring required.  
 ††Thorium and Asbestos contamination present.

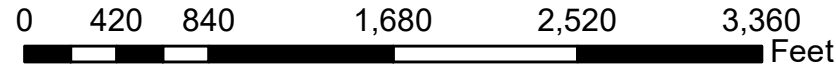


Note: This map does not present investigation information for the right-of-ways. This information can be obtained from <https://www.epa.gov/lindsay-light>

The Thorium Monitoring Area encompasses all buildings and rights-of-ways within the three areas depicted north and south of the Chicago River. Where a boundary line runs along a street, thorium monitoring is required for the properties within the boundary line and for any sidewalks adjacent to the boundary line.

**Legend**

- Thorium Monitoring Area
- Investigated/No Contamination
- Excavated Contamination Removed
- Ongoing Investigation and/or Cleanup
- Scan Indicated No Surface Contamination



July 1, 2016



D:\Rebot\_GIS\Projects\Lindsay\_Light\Dave\Streeterville Thorium Investigation Map\_20160701.mxd