

Packers Recycling and Transfer Summary of Design and Operations

8/18/2022



Civil & Environmental
Consultants, Inc.



LRS

Lakeshore Recycling Systems

LRS differentiates itself through aggressive and innovative diversion and recycling programs, technological advances, and protection of the environment.

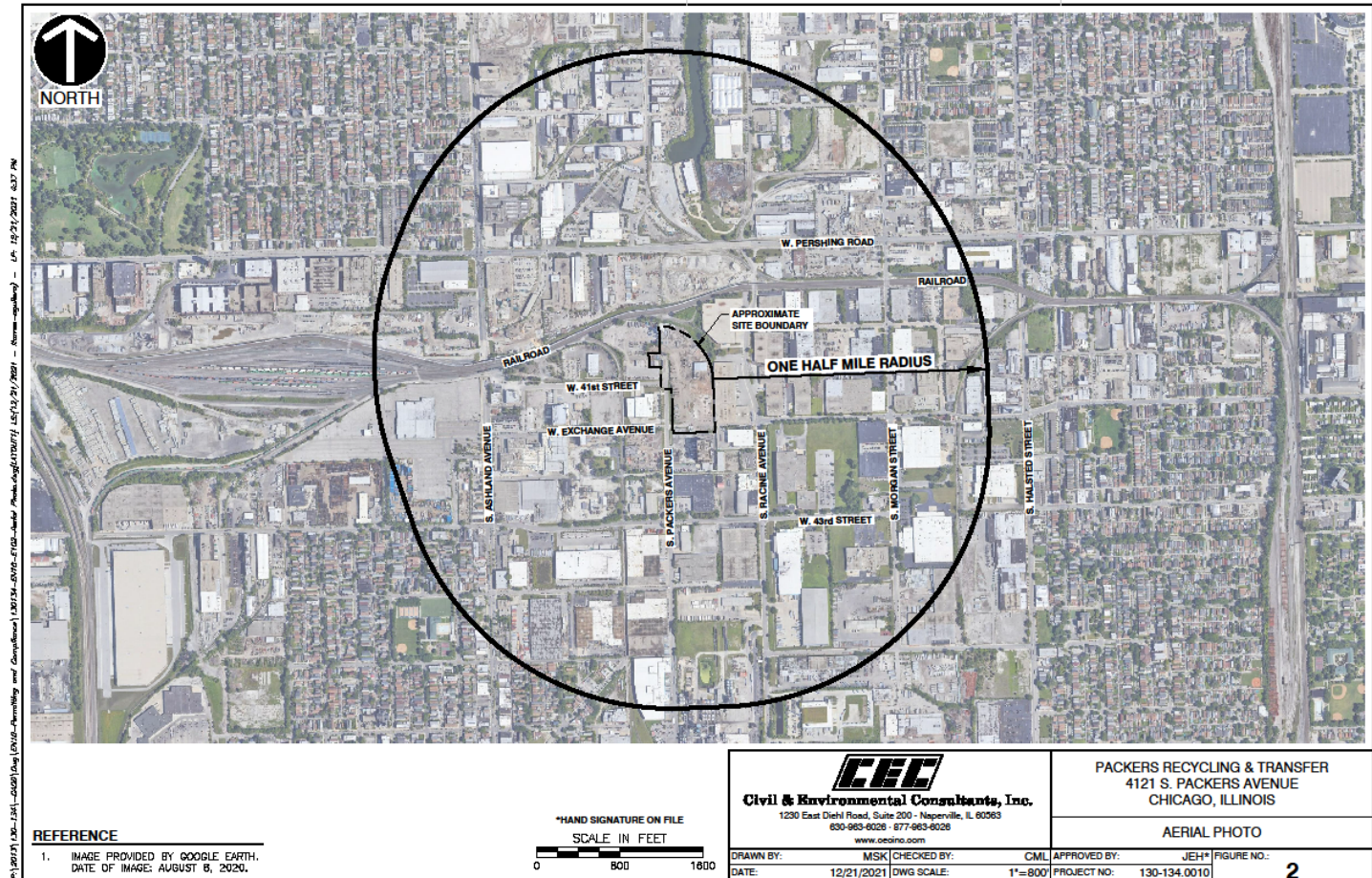
LRS

- 62 facilities located throughout Illinois and the Midwest
- 6 sites in the City of Chicago employing 258 people
- Diverted/recycled 328,997 tons from Chicago facilities in 2021

Packers Recycling and Transfer (PRT)

The Stockyards
Industrial Park

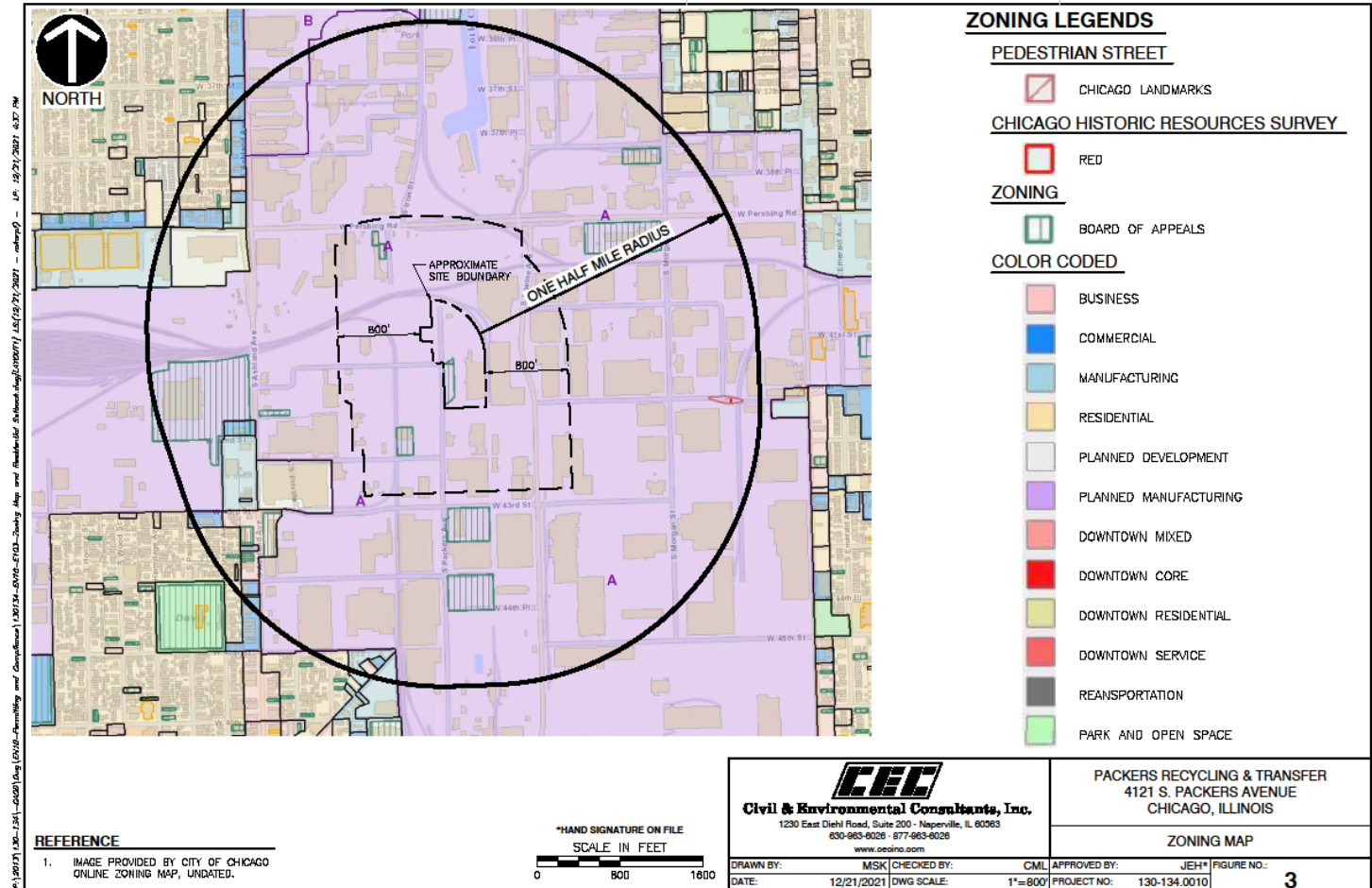
9.8-acre property
east of Ashland
Avenue



PRT

Long-term commercial and industrial uses

Closest residence 2,000+ feet away



Existing Facility

- Site has been operating as a transfer station for approximately ten years
- Currently permitted to process and transfer general construction or demolition debris (C&D) and, upon construction of an additional building, to transfer municipal solid waste (MSW)

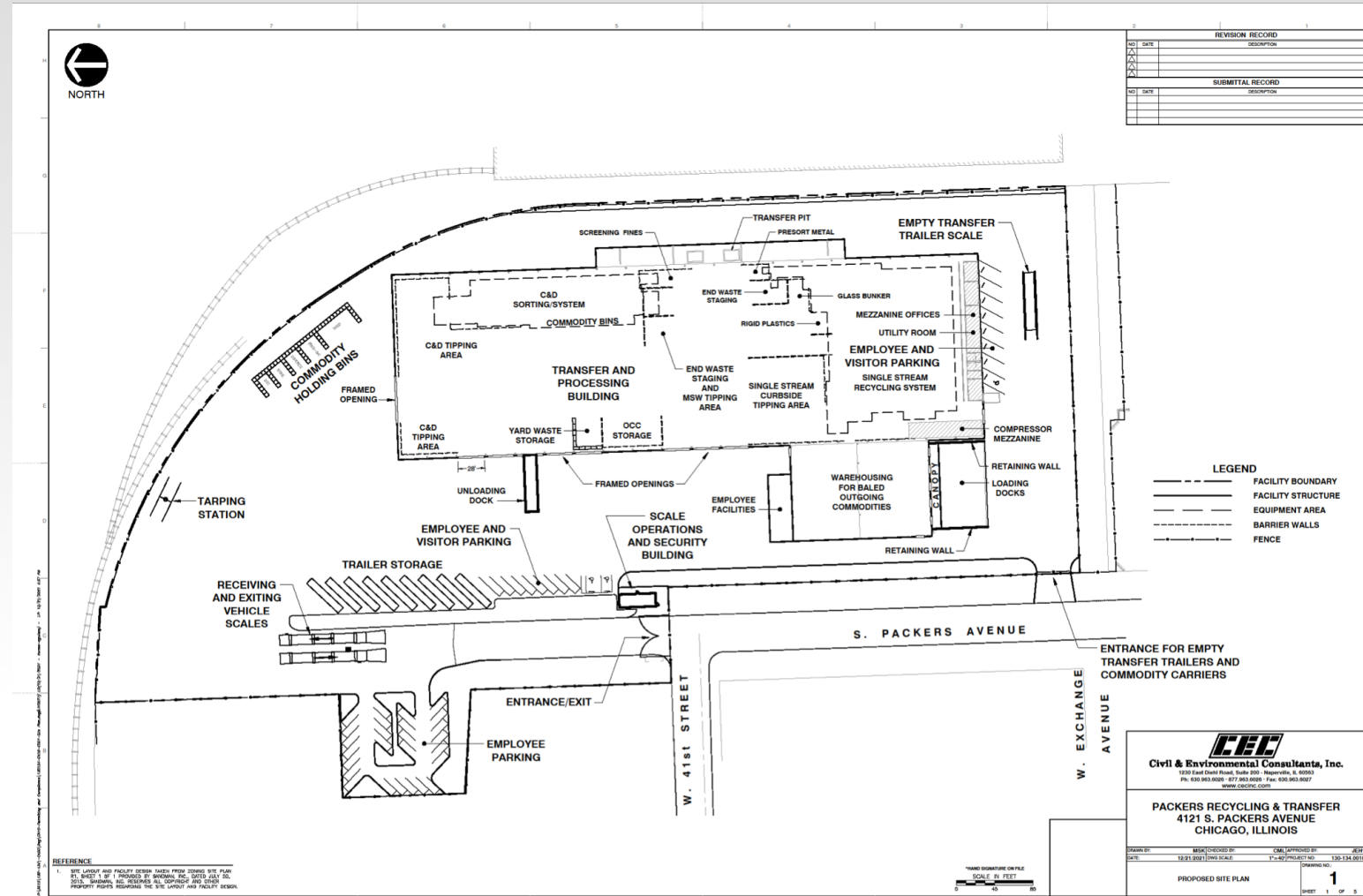
Proposed Facility - Site Layout

3.2-acre state-of-the-art transfer, recycling and sorting building

Scale/security building

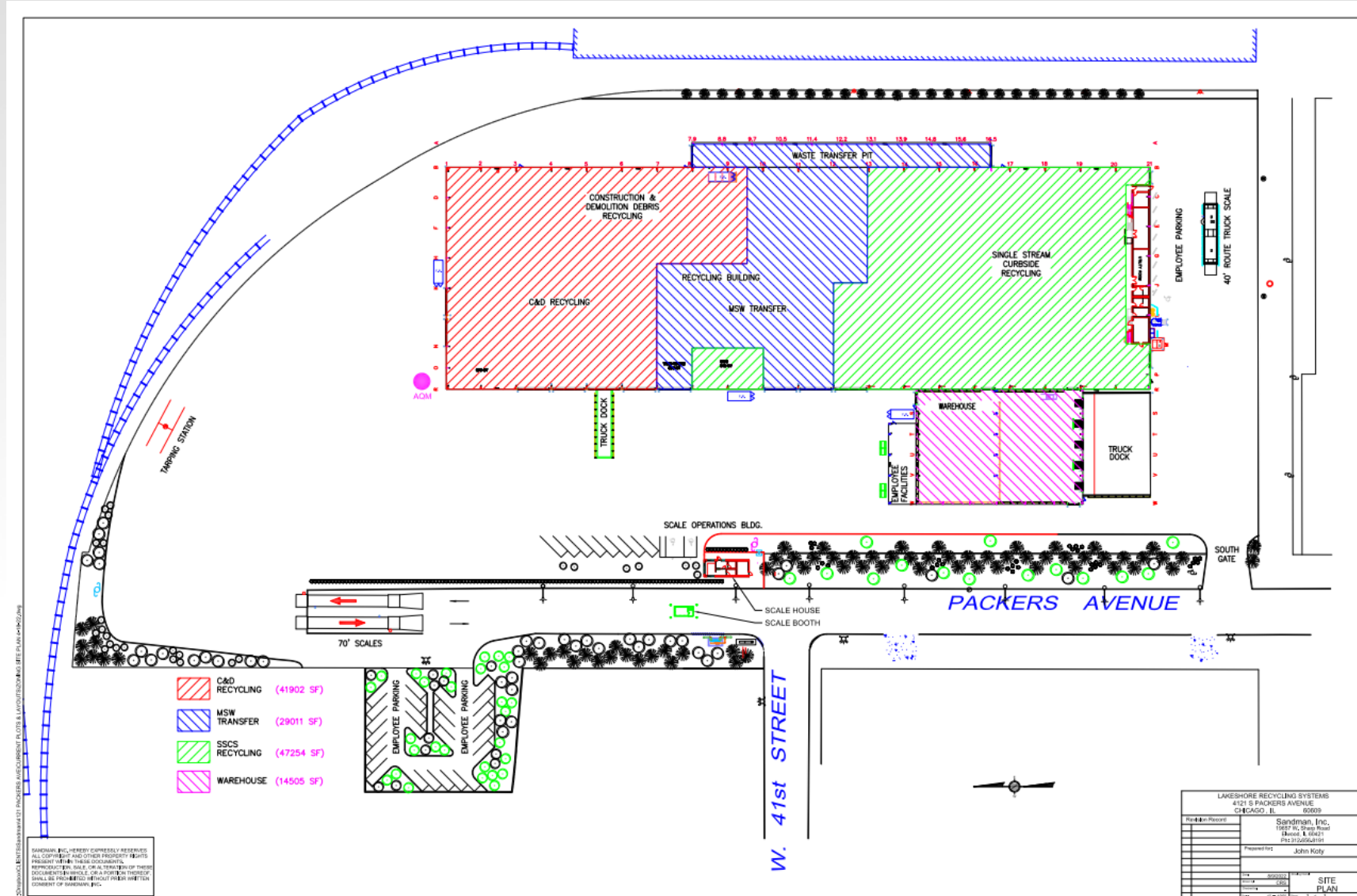
Below-grade stormwater detention structure

Parking and trailer staging



Industrial Building Operations

1. C&D recycling
2. MSW transfer
3. SSR sorting
4. Warehousing of separated/baled recyclable material



Onsite Traffic Flow

All inbound disposal vehicles weighed and billed at entrance



Vehicles proceed in a counter-clockwise direction

Why is this facility necessary?

1. Cook county has no active landfills
2. The City of Chicago aims to improve recycling access and diversion rates, which requires a state-of-the-art for sorting of single-stream recyclable
3. LRS collects recyclables from the City of Chicago Blue Cart Program and Chicago Public Schools

Traffic Evaluation

Reduce truck traffic, air pollution, and greenhouse gas emissions

- LRS operates an adjacent vehicle maintenance facility
- Collection vehicles depart in the morning, collect MSW/ recyclables, and return to PRT to unload and park overnight
- Eliminates extra fuel consumption

Litter Control

1. Enclosed or tarped trucks
2. All loading, unloading, and handling occur inside the industrial building
3. Daily site patrol for any litter

Odor Control

1. Minimize odors by removing MSW on a first-in-first-out basis
2. Building doors located at all vehicle ingress/egress locations and closed when not in use
3. Pressure washer cleaning of tipping floor areas
4. Odor neutralizing misting system

Summary

- PRT conveniently located in a historic industrial park
- Coordinated operations to efficiently manage C&D, MSW, and SSR in a state-of-the-art facility
- Assists the City of Chicago in achieving the State of Illinois' performance standards for recycling mandates and the reduction of landfill waste
- Employs 140 people

Thank you!

Questions?

John Hock P.E.— Jhock@cecinc.com

Natalie Grimaldi— NGrimaldi@LRSrecycles.com

Rich Golf— RGolf@LRSrecycles.com

Joy Rifkin— JRifkin@LRSrecycles.com



Civil & Environmental
Consultants, Inc.

