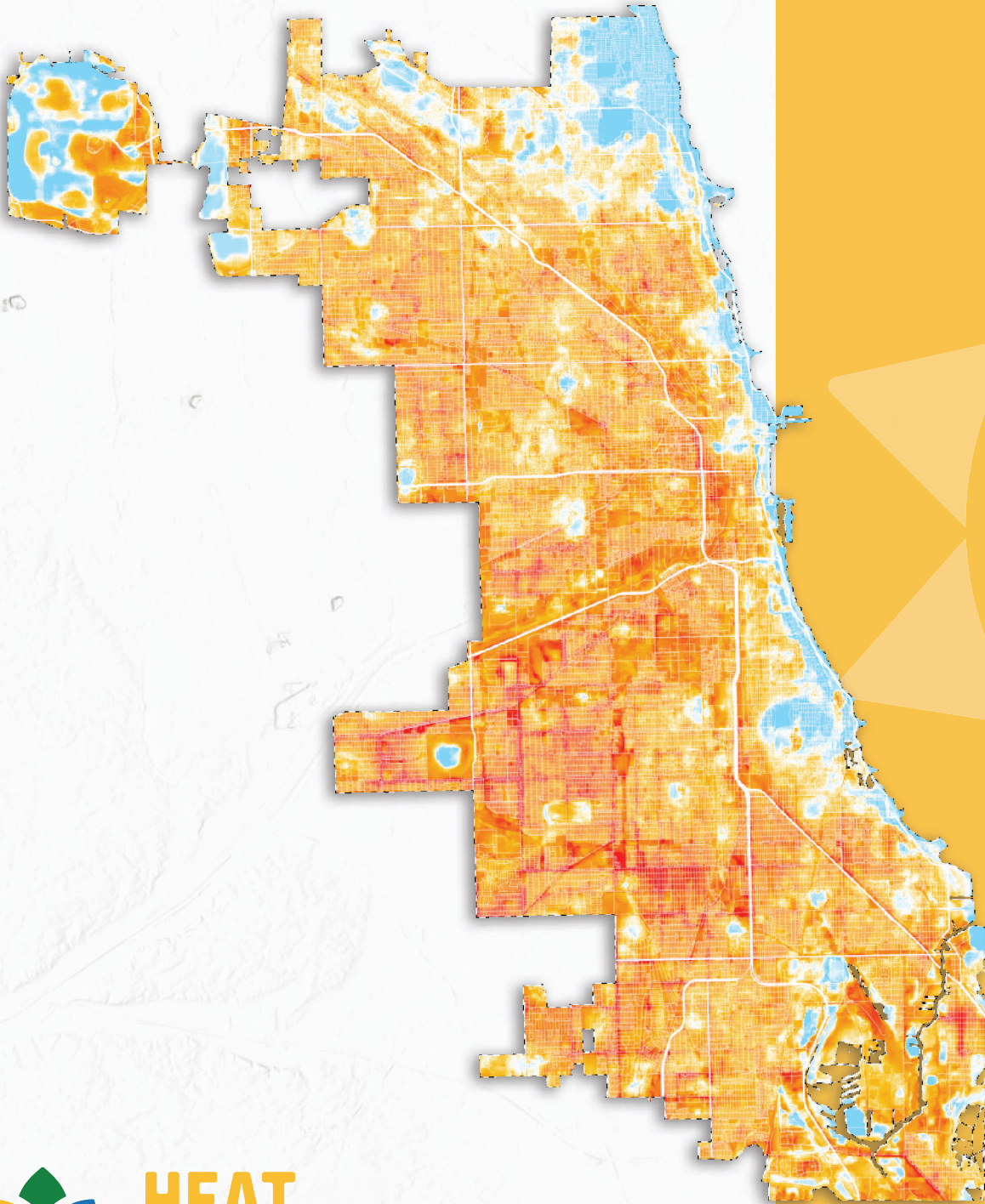


Chicago

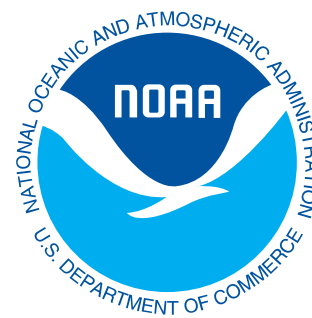
Illinois



**HEAT
WATCH**
Report

Acknowledgements

The CAPA Heat Watch program, equipment, and all related procedures referenced herein are developed through a decade of research and testing with support from national agencies and several universities. Most importantly, these include our partners at the National Integrated Heat Health Information System, the National Oceanic and Atmospheric Administration's (NOAA's) Climate Program Office, and National Weather Service, including local weather forecast offices at each of the campaign sites, The Science Museum of Virginia, and U.S. Forest Service (USDA). Past support has come from Portland State University, the Climate Resilience Fund, and the National Science Foundation. We are deeply grateful to these organizations for their continuing support.



Heat Watch Chicago was conducted as part of the CAPA-NIHHIS 2023 Heat Mapping Campaign. Learn more about the campaign and this public-private partnership [here](#).



Table of Contents

4	Executive Summary	
6	Welcome	
7	Process	
8	Maps	
17	Modeling Method	
18	Technical Notes	
19	Media	
24	Next Steps	
27	Frequently Asked Questions (FAQ)	
8	About the Maps	
9	Morning Traverse Points	
10	Morning Area-Wide	
11	Afternoon Traverse Points	
12	Afternoon Area-Wide	
13	Evening Traverse Points	
14	Evening Area-Wide	
15	Average Area-Wide	
16	Initial Observations	

We know that extreme heat is the most deadly of all natural disasters and that its impacts are not evenly distributed across people and places. Location matters. Those who live in historically disinvested neighborhoods, with limited access to resources and greenspace, and those struggling with additional health concerns are all at greater risk when it comes to the impacts of extreme heat. Our infrastructure systems (e.g. energy, transportation) are also at risk, which can further compromise a region's capacity to provide essential cooling resources. Heat Watch provides a new level of detail about where heat is most concentrated across cities, improving on coarse satellite-derived descriptions and better describing the human experience of heat.

Accomplishing this high level of detail and spatial coverage is only made possible by the efforts of campaign organizers and local volunteer data collectors, who co-designed a mobile monitoring study with CAPA to measure heat across the diverse land uses and geographical features of your region. Heat-focused partnerships emerged between local stakeholders like residents, municipal staff, health officials, emergency responders, researchers, and non-profit organizations. Throughout the process, teams learned about the Urban Heat Island (UHI) effect in their area and raised awareness of the issue through training, discussions, and media coverage.



Heat Watch is one step in the journey towards adaptation to extreme heat. By bridging innovations in community climate action, sensor technology, and spatial analytics, together we have achieved two main objectives:

- 1 Developed high resolution descriptions of the distribution of ambient (air) temperature and humidity (heat index) across your region; and
- 2 Engaged local communities to create partnerships to better understand and address the inequitable risks posed by extreme heat.

The results provide a snapshot in time of how urban heat varies across neighborhoods and how local landscape features affect temperature and humidity. In this report we present the process, mapping outputs, media coverage and photographs from Heat Watch, as well as next steps for how to build on the results.



Executive Summary

Study Date

July 28th, 2023

The results presented in this report are the traverse point data - the heat measurements collected by participants - and 'area-wide models' which are generated through analysis of the traverse points and their surrounding landscape features. We focus primarily here on temperature to establish a baseline of the results, while relative humidity and heat index results are available separately.

In reviewing the results, please note that while absolute temperatures (e.g. 90.1°F) are provided, we recommend focusing on the distribution of temperatures (e.g. top 20% hottest areas) within each time period. As temperatures rise, the hottest places are likely to remain the hottest. The report also includes an 'Average Model' combining all three time periods as well as a Frequently Asked Questions section with further detail on the data, models and visuals produced.

228 mi²
Study Area

100
Volunteers

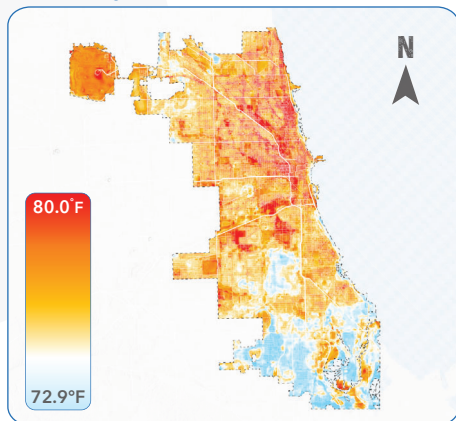
29
Routes

139,433
Measurements

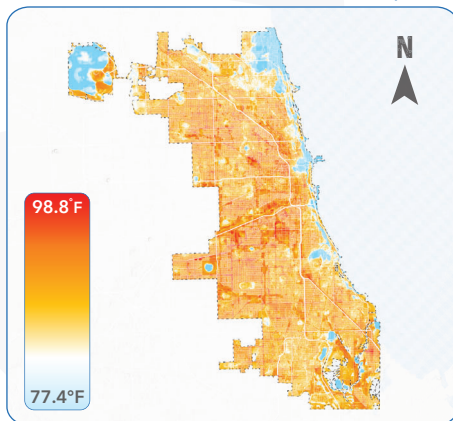
99.1°
Max Temperature

22°
Max Temperature
Differential

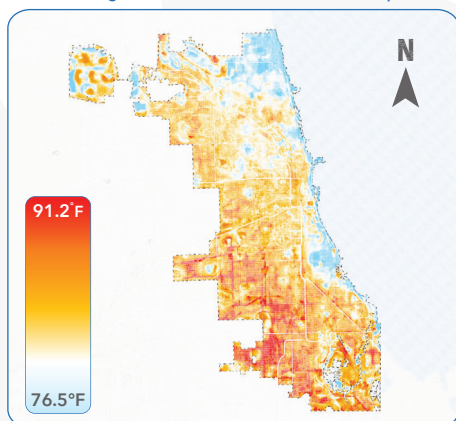
Morning Area-Wide Predictions (6 - 7 am)



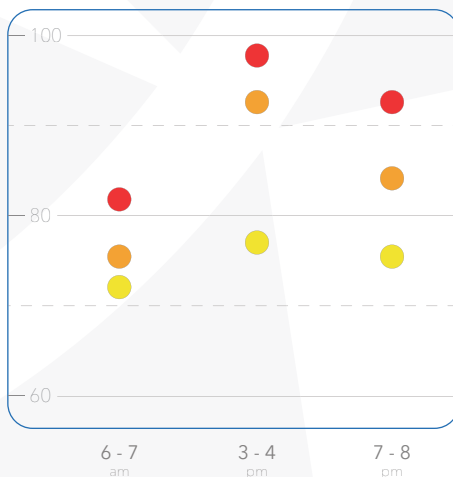
Afternoon Area-Wide Predictions (3 - 4 pm)



Evening Area-Wide Predictions (7 - 8 pm)



Traverse Points (°F)



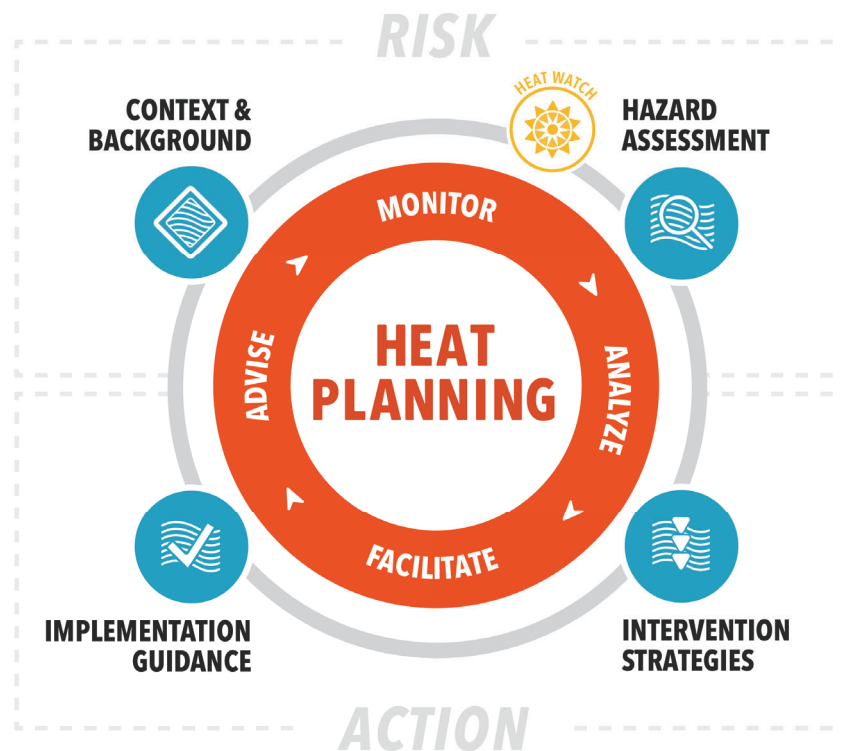


Welcome

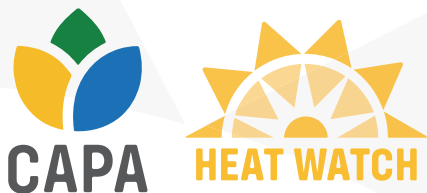


Congratulations and thank you to all of the organizers and participants of Heat Watch Chicago! After weeks of planning and coordination, local partners successfully completed their heat mapping campaign by collecting thousands of temperature and humidity data points in the morning, afternoon and evening of a long, hot day on July 28th, 2023. Using this information, CAPA analysts were able to generate highly detailed models of urban heat across the study region and throughout the day.

With this new information, local decision makers will be better equipped to safeguard human life against the growing impacts of extreme heat. Heat Watch serves as an essential part of a broader 'heat planning' framework that provides a comprehensive approach for adaptation to heat. When situated with local contextual information that describes social, physical and economic conditions, Heat Watch data can help to identify people and places at highest risk to extreme heat and drive appropriate intervention strategies and policies.



CAPA Strategies is a team of analysts, planners and social scientists who recognize the need for holistic, data-driven, and equity-focused approaches to climate action. Heat Watch is one tool in a systematic process for identifying risks and advancing actions for local adaptation to our warming planet. Through collaborative and community-based approaches such as this, we envision a more connected, informed and climate resilient region.



Process

CAPA Strategies has developed the Heat Watch campaign process over several iterations, with methods well established through peer-reviewed publications¹, testing, and refinement.

The current campaign model requires leadership by local organizers, who engage community groups, new and existing partner organizations, and the media in generating a dialog about effective solutions for understanding and addressing extreme heat.

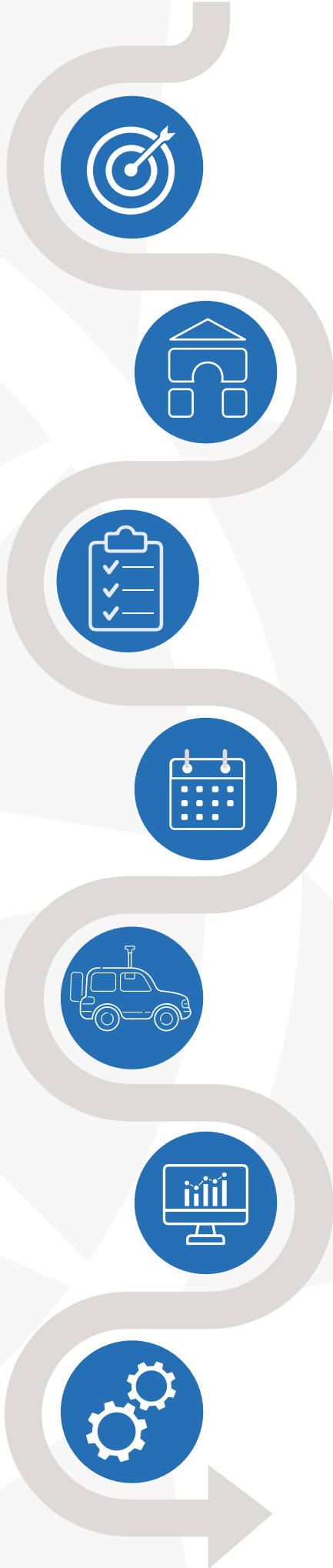
CAPA provides training, equipment, and support to the recruited community groups as they endeavor to collect primary temperature and humidity data across a metropolitan region.

The seven main steps of the campaign process are summarized to the right. An overview of the analytical modeling methodology is presented later in this report and described at full length in peer-reviewed publications.

¹ The most relevant and recent publications to the Heat Watch campaign process include:

Shandas, V., Voelkel, J., Williams, J., & Hoffman, J., (2019). Integrating Satellite and Ground Measurements for Predicting Locations of Extreme Urban Heat. *Climate*, 7(1), 5. <https://doi.org/10.3390/cli7010005>

Voelkel, J., & Shandas, V. (2017). Towards Systematic Prediction of Urban Heat Islands: Grounding Measurements, Assessing Modeling Techniques. *Climate*, 5(2), 41. <https://doi.org/10.3390/cli5020041>



1. Goal Setting

Campaign organizers determine the extent of their mapping effort, prioritizing areas experiencing environmental and social justice inequities. CAPA then divides this study area into routes, each containing a diverse set of land uses and land covers.

2. Engagement

Organizers recruit volunteers, often via non-profits, universities, municipal staff, youth groups, friends, family, and peers. Meanwhile, CAPA designs the data collection routes by incorporating important points of interest such as schools, parks, and community centers.

3. Training

Volunteers attend a training session to learn the why and how of the project, their roles as data collectors, and to share their personal interest in the project. Participants sign a liability and safety waiver, and organizers assign teams to each polygon and route.

4. Activation

With the help of local forecasters, organizers identify a high-heat, clear day (or as near to one as possible) and coordinate with their volunteer teams. Once confirmed, CAPA ships the sensor equipment and bumper magnets to be distributed to campaign participants.

5. Execution

Volunteer teams conduct the heat campaign by driving sensor equipment along pre-planned traverse routes at coordinated hour intervals. Each second the sensors collect a measurement of ambient temperature, humidity, longitude, latitude, speed and course.

6. Analysis

Organizers collect and return the equipment, and CAPA analysts begin cleaning the data, as described in the Mapping Method section below, and utilize machine learning algorithms to create predictive area-wide models of temperature and heat index for each traverse.

7. Implementation

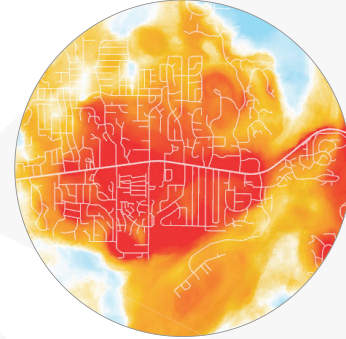
Campaign organizers and participants review the Heat Watch outputs (datasets, maps, and report), and campaign teams meet with CAPA to discuss the results and next steps for addressing the distribution of extreme heat in their community.

About The Maps

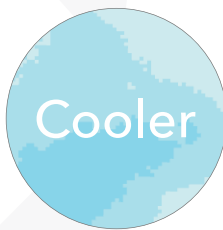
The following sections present results from the campaign: traverse point measurements and area-wide models at morning, afternoon and evening. Below are several key details to keep in mind as you view the results.



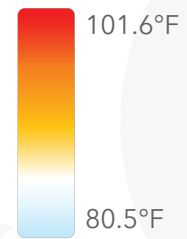
Traverse point maps present the near-surface air temperature measurements gathered during the campaign, filtered to usable data for modeling.



Area-wide maps present high resolution models of temperature across the study area based on the traverse points and Sentinel-2 spectral imagery.



The data are classified by natural breaks in order to clearly illustrate the variation between warmer (red) and cooler (blue) areas across the map.



Note that the scales are different between the traverse point and area-wide maps due to the predictive modeling process.

How does your own experience with heat in these areas align with the map?

Find your home, place of work, or favorite park on the maps and compare the heat throughout the day to your personal experience.

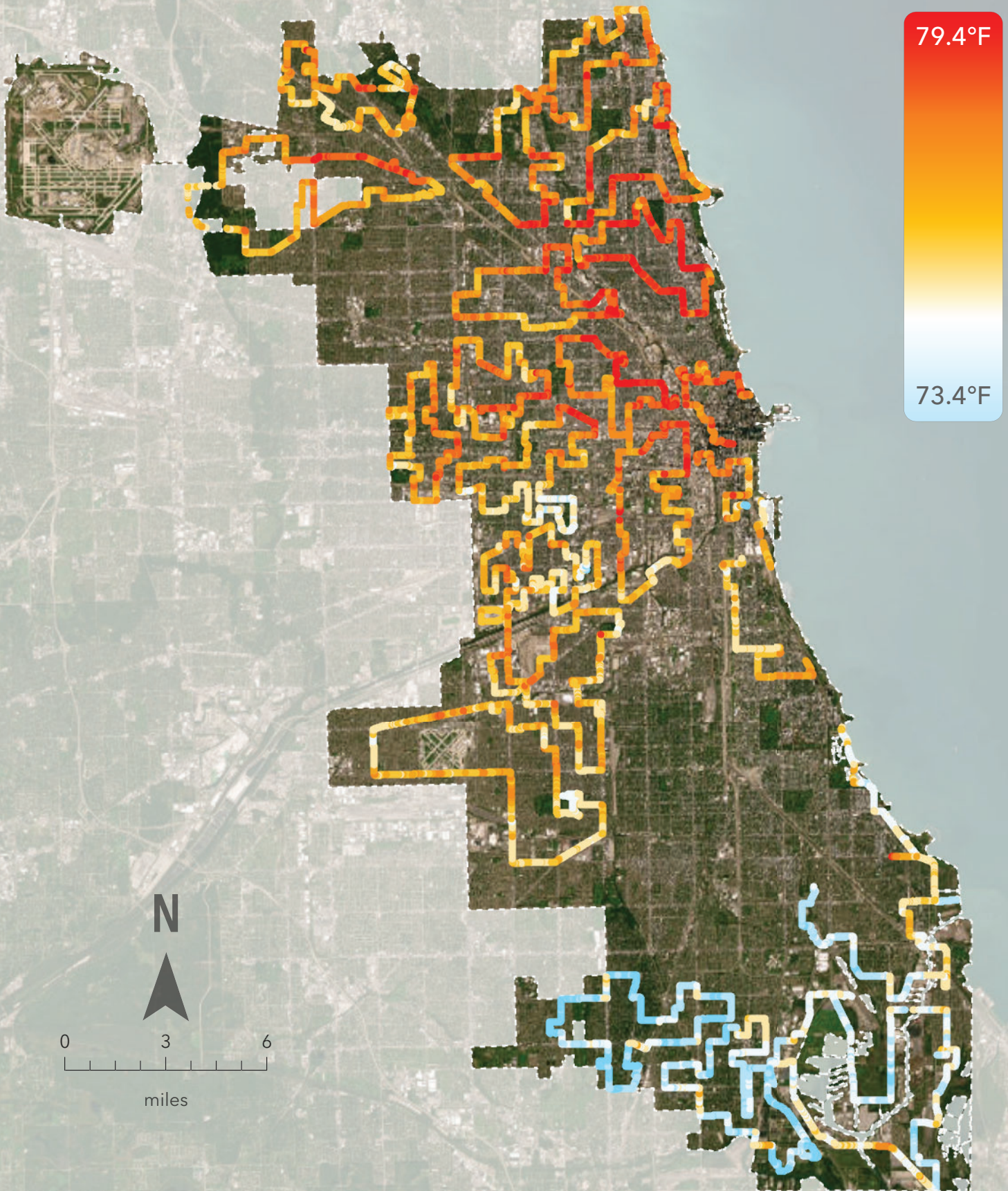


What about the landscape (trees, concrete buildings, riverside walkway) do you think might be influencing the heat in this area?



Morning Traverse Points

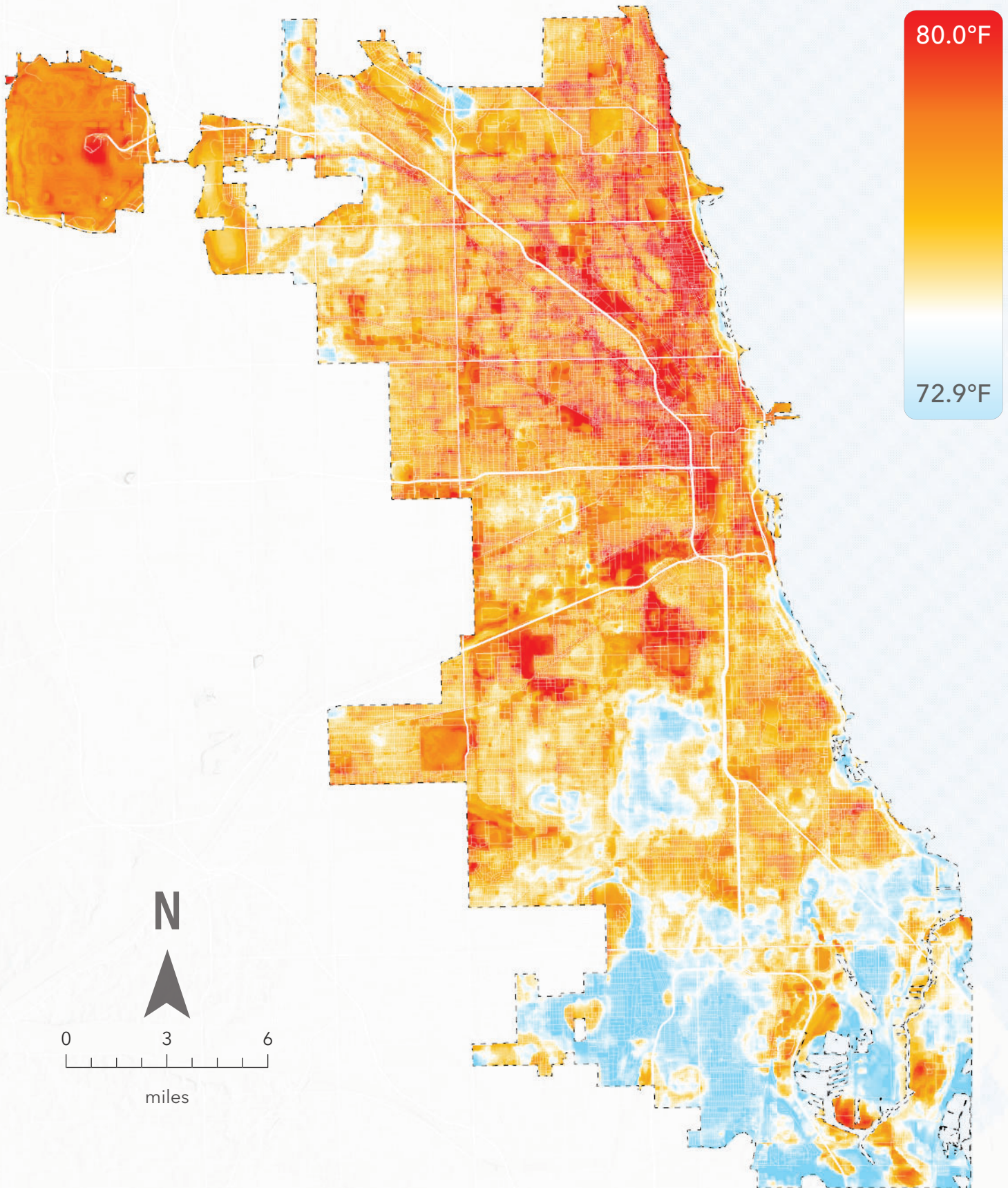
Temperature (6 - 7 am)





Morning Area-Wide Models

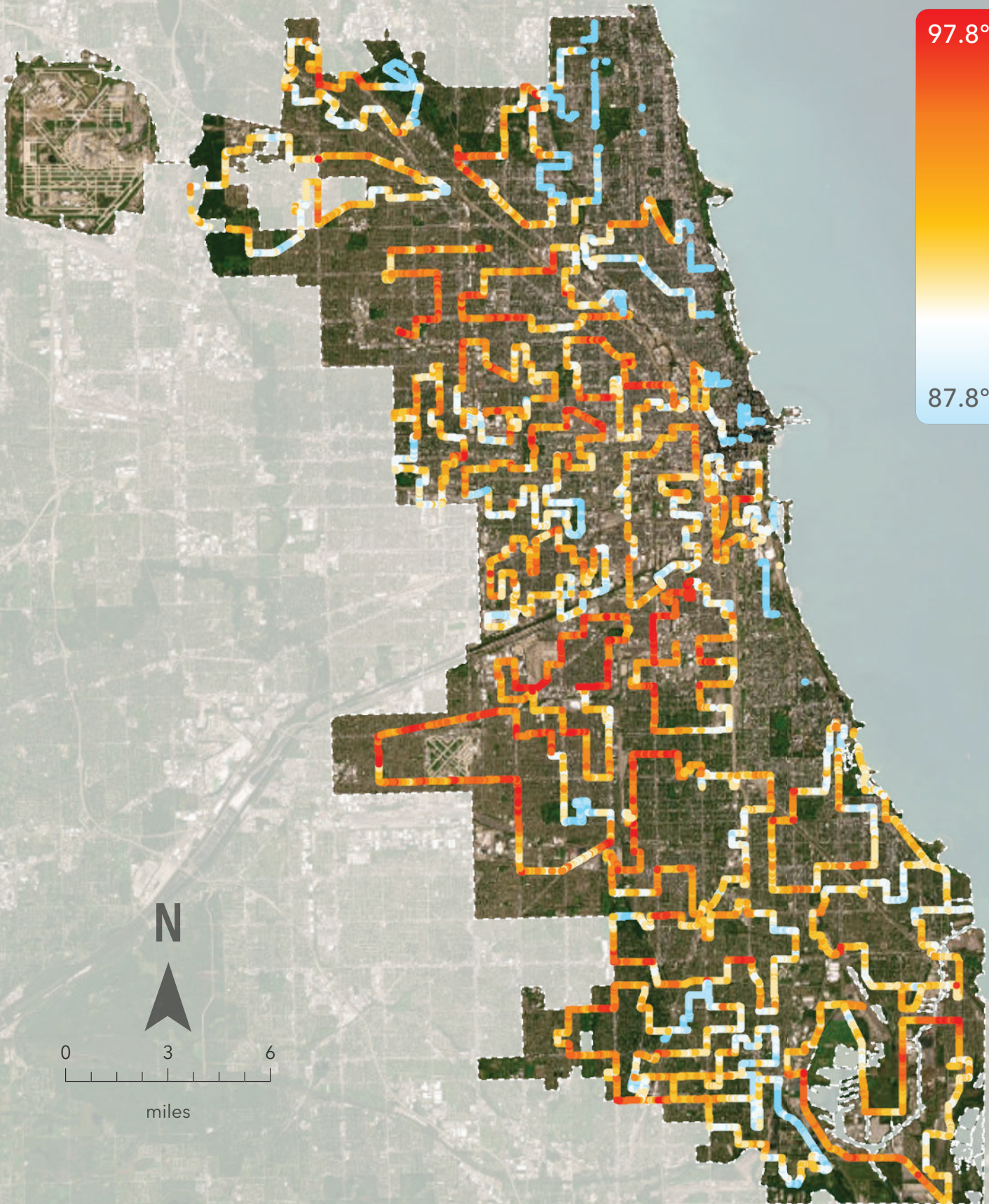
Temperature (6 - 7 am)





Afternoon Traverse Points

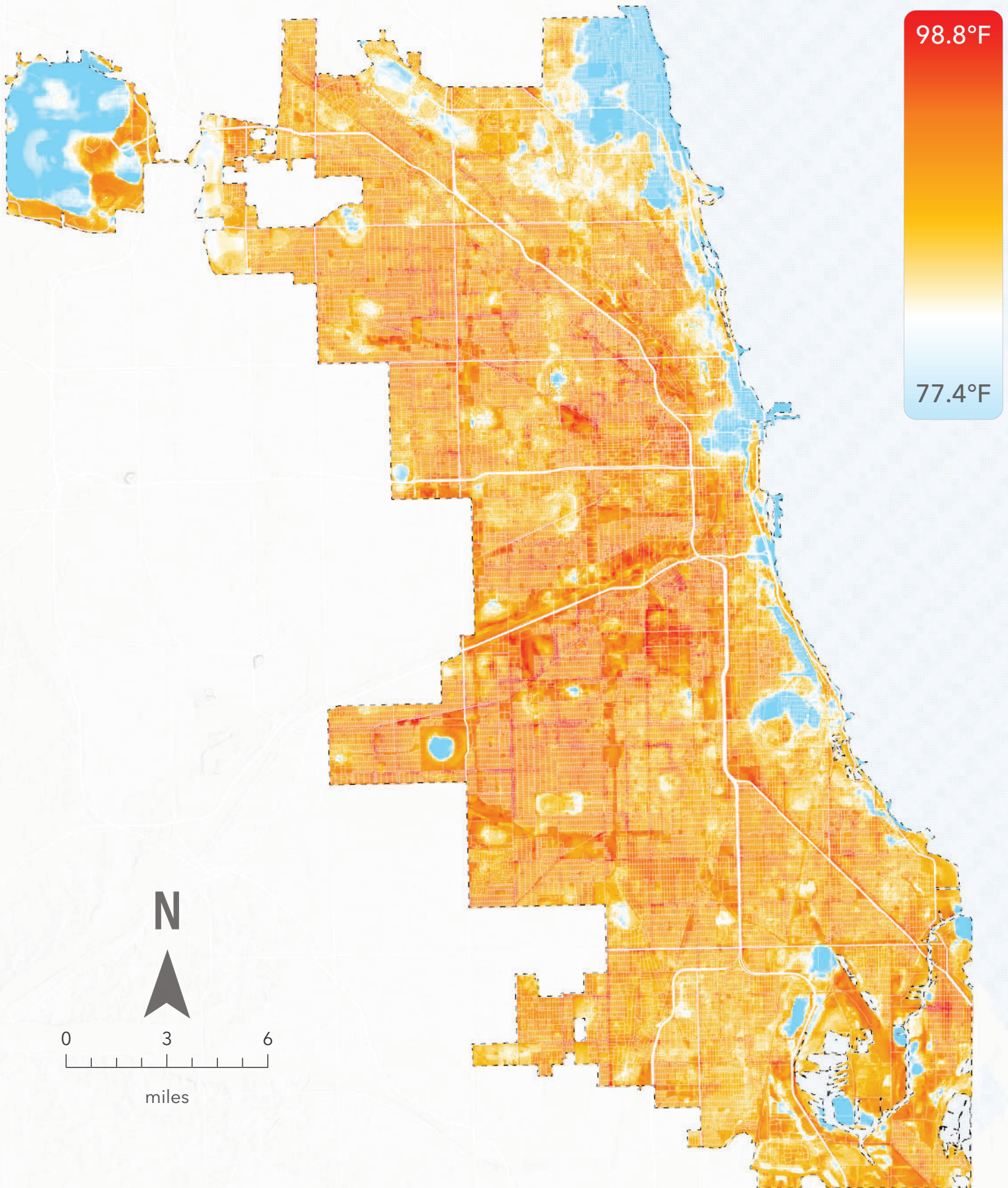
Temperature (3 - 4 pm)





Afternoon Area-Wide Models

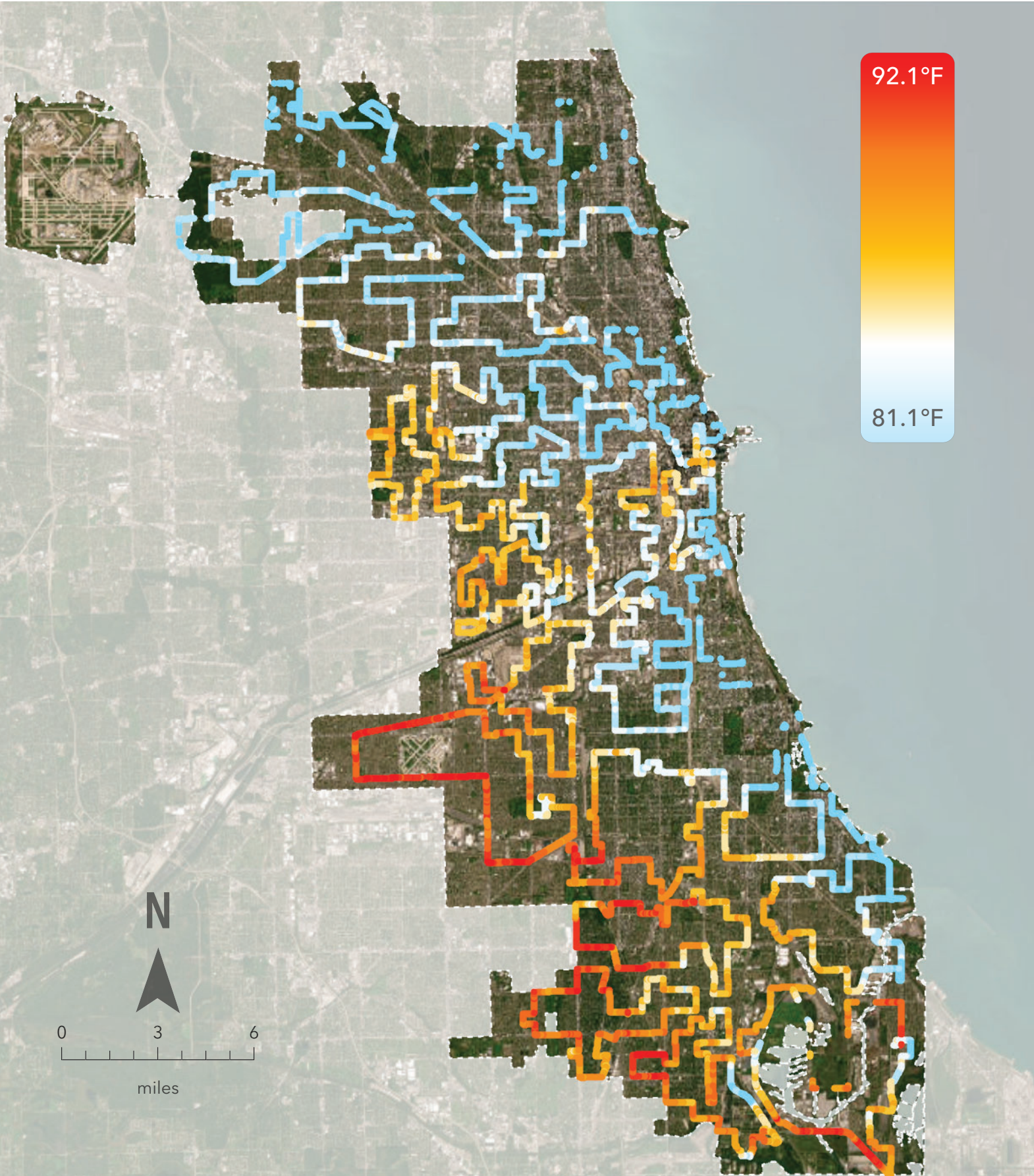
Temperature (3 -4 pm)





Evening Traverse Points

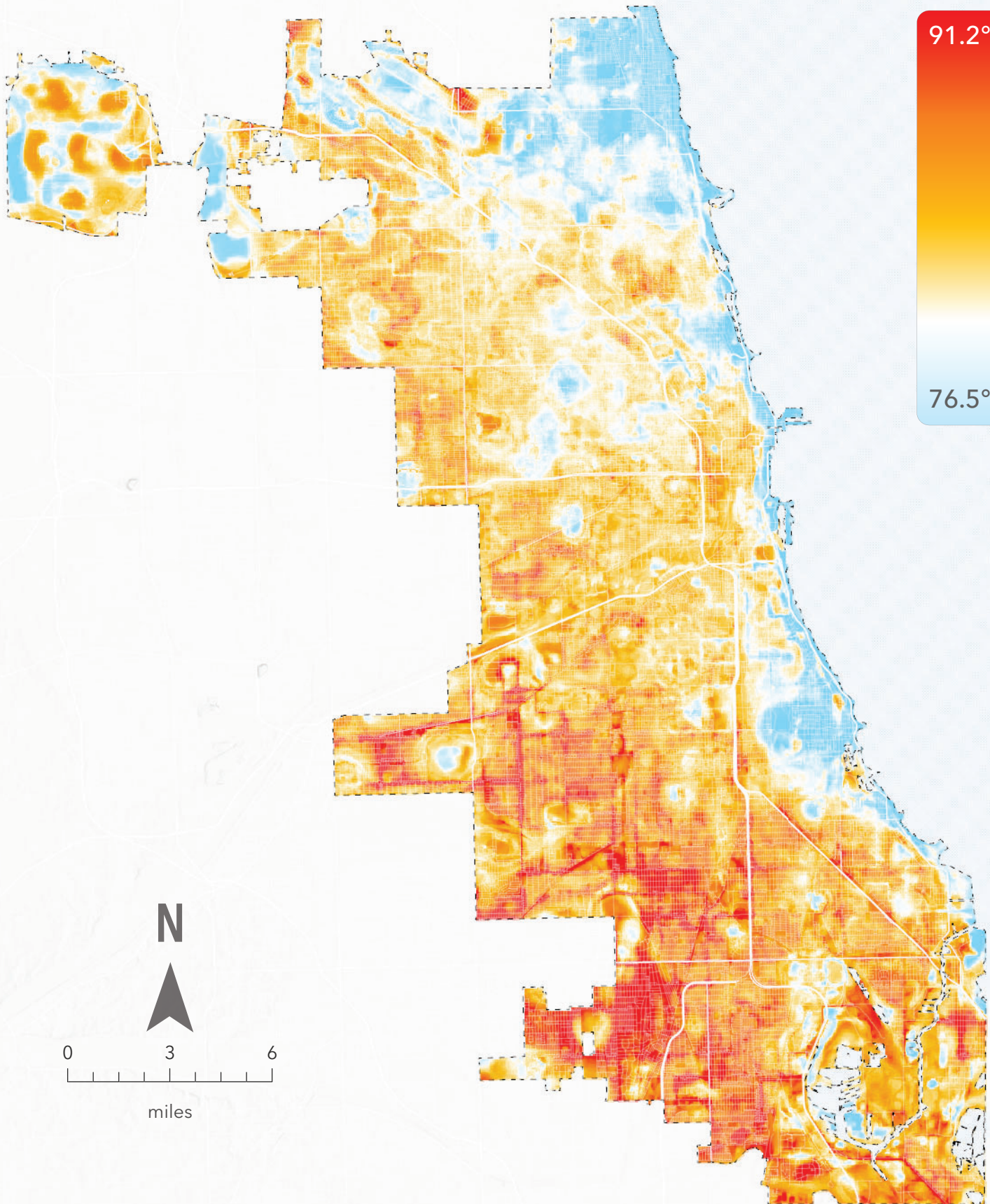
Temperature (7 - 8 pm)





Evening Area-Wide Models

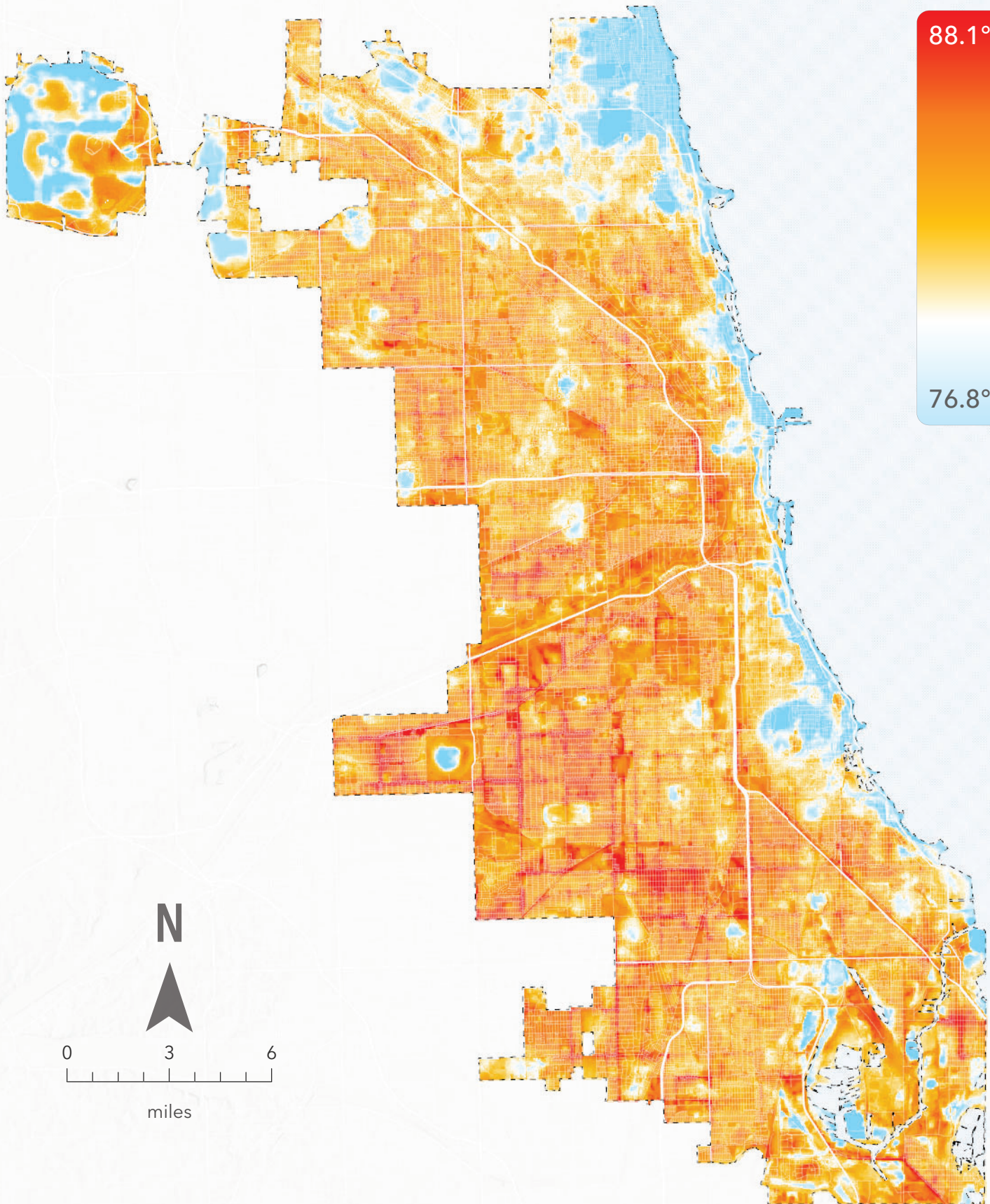
Temperature (7 - 8 pm)





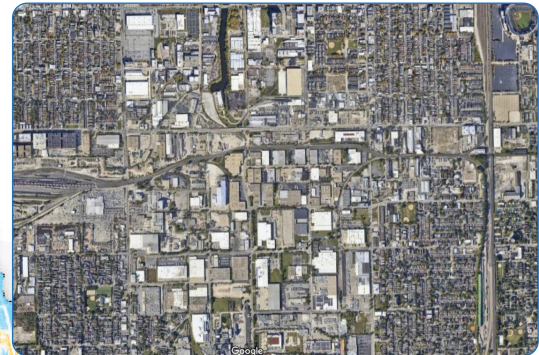
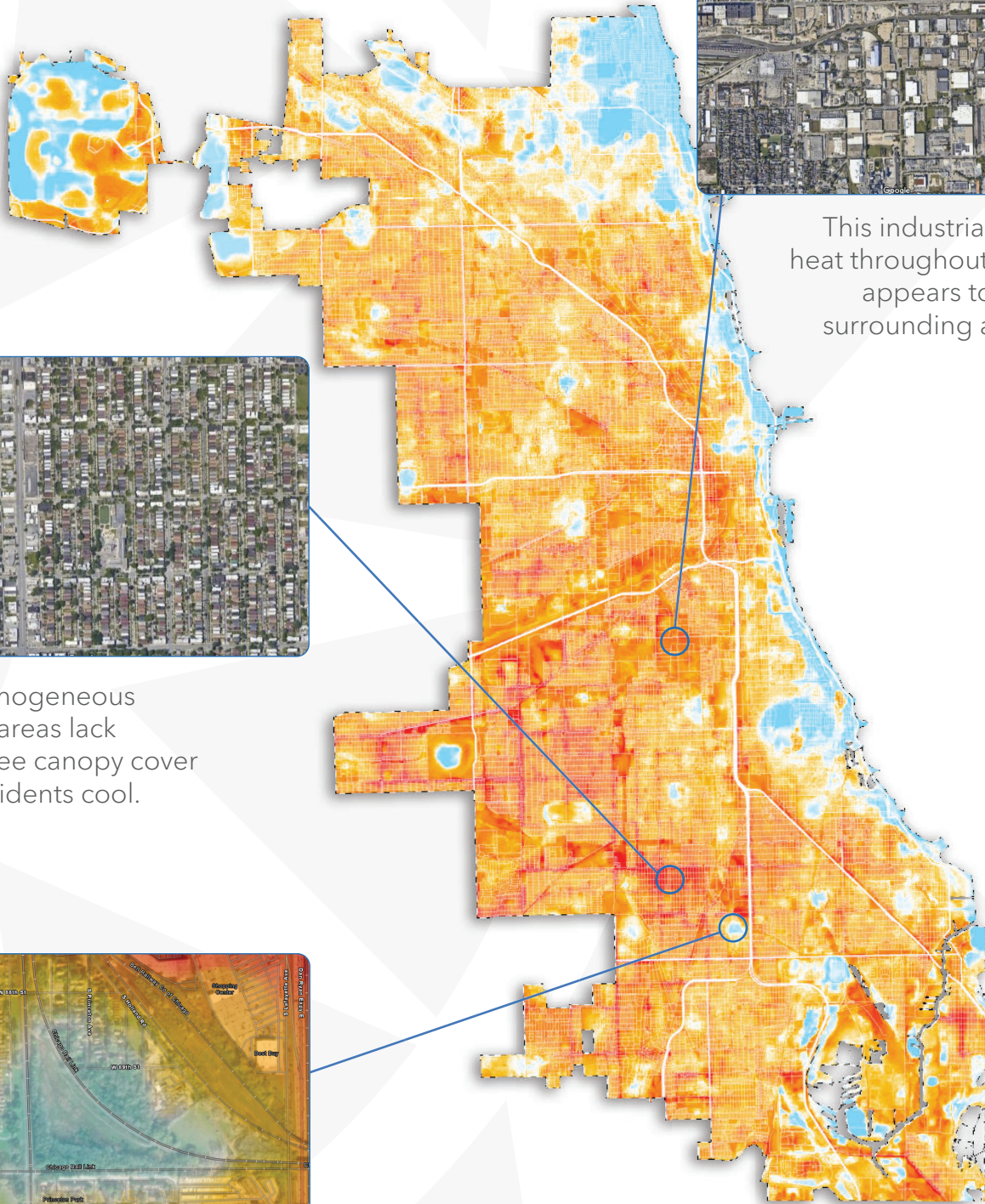
Average Area-Wide Model

The average model is produced by averaging together the morning, afternoon and evening models with equal weight.

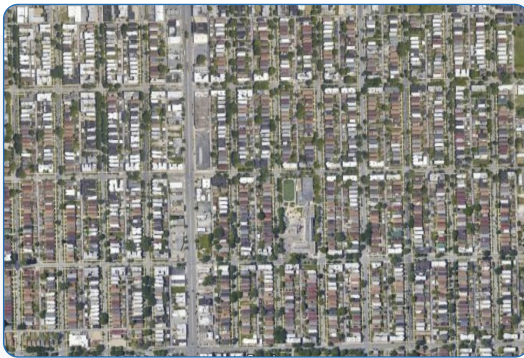


Initial Observations

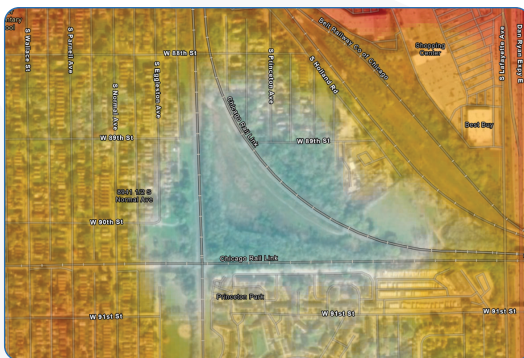
The distribution of heat across a region often varies by qualities of the land and its use. Here are several observations of how this phenomenon may be occurring in your region.



This industrial area retains heat throughout the day and appears to radiate into surrounding areas as well.



Dense, homogeneous residential areas lack sufficient tree canopy cover to keep residents cool.



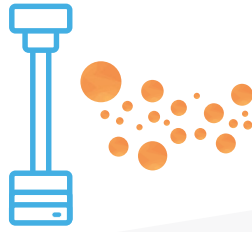
Preserved natural and open-space areas provide a cooling buffer between adjacent land uses.

Average Area-Wide Model

Modeling Method

The three key steps and geospatial processes that allow CAPA analysts to transform traverse point data into area-wide models of temperature.

1 Download & Filter



Download raw heat data from sensor SD cards

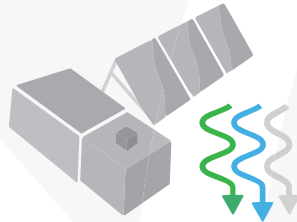


Compare data with field notes and debrief interview

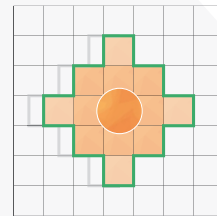


Trim data to proper time window, speed, and study area

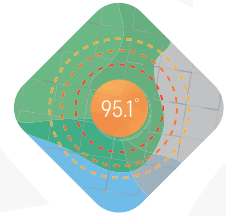
2 Integrate & Analyze



Download multi-band land cover rasters from Sentinel-2 satellite

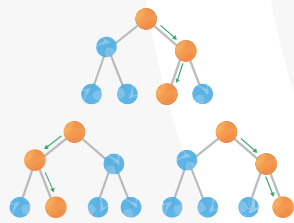


Transform land cover rasters using a moving window analysis

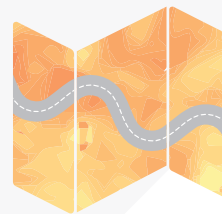


Calculate statistics of each land cover band across multiple radii

3 Predict & Validate



Combine heat and land cover data in Machine Learning model



Create predictive raster surface models of each period



Perform cross validation using 70:30 holdout method

The most relevant and recent publications include:

Shandas, V., Voelkel, J., Williams, J., & Hoffman, J., (2019). Integrating Satellite and Ground Measurements for Predicting Locations of Extreme Urban Heat. *Climate*, 7(1), 5. <https://doi.org/10.3390/cli7010005>

Voelkel, J., & Shandas, V. (2017). Towards Systematic Prediction of Urban Heat Islands: Grounding Measurements, Assessing Modeling Techniques. *Climate*, 5(2), 41. <https://doi.org/10.3390/cli5020041>

Accuracy Assessment*	
Model Period	Adjusted R-Squared
6 - 7 am	0.98
3 - 4 pm	0.96
7 - 8 pm	0.98

Accuracy Assessment

To assess the strength of our predictive temperature models, we employ a 70:30 "holdout cross-validation method," which consists of predicting 30% of the data with the remaining 70%, selected randomly. An 'Adjusted R-Squared' value of 1.0 is perfect predictability, and 0 is total lack of prediction. Additional information on this technique can be found at the following reference: Voelkel, J., and V Shandas, 2017. Towards Systematic Prediction of Urban Heat Islands: Grounding measurements, assessing modeling techniques. *Climate* 5(2): 41.

Field Data

Like all field campaigns, the collection of temperature and humidity data requires adherence to a specific set of protocols and experimental controls. In the event that unreported or undetected error is introduced during the data collection process, the accuracy of the resulting datasets and models may be compromised in quality. While our team has developed a multi-stage process for quality assurance and quality control (outlier removal), some errors can go unidentified and undetected, and thereby compromise the accuracy of the results. We suggest keeping this nature of field data collection in mind when reviewing the results.

Prediction Areas

The traverse points used to generate the areas wide models do not cover every square mile of the studied area -- rather, we take a sampling approach to gather representative measurements across the diversity of land-use, land-cover, and biophysical attributes of each study area. We suggest keeping this sampling and modeling approach in mind when reviewing the results.



Chicago heat data will help address urban heat islands; July on track to be hottest month on record



City of Chicago seeks volunteers to track heat and humidity for a national climate study



Chicago seeks volunteers to track heat and humidity for a national climate study

Chicago is one of 19 U.S. metro areas taking part in the study of extreme heat in urban areas.



Oh, Nature!

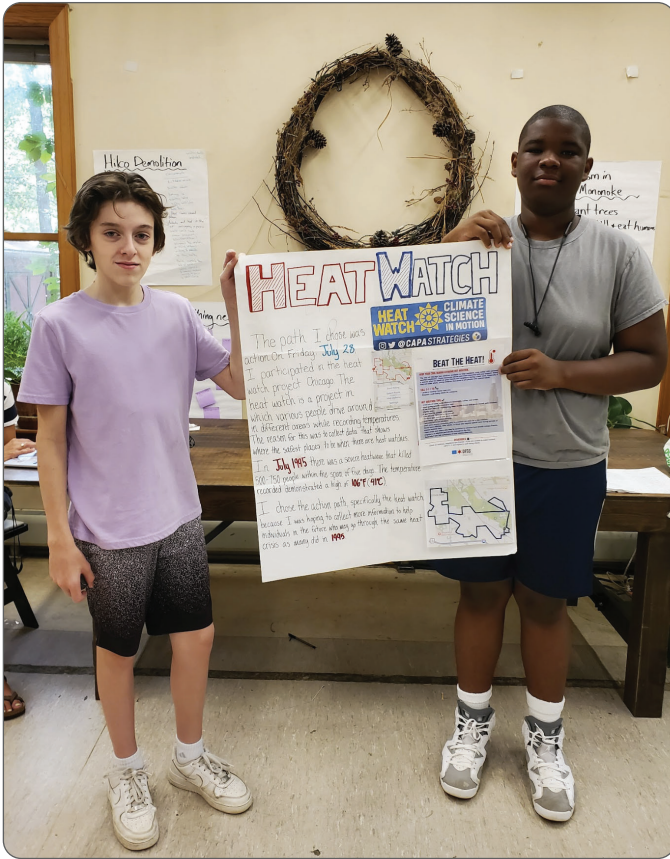
Chicago explores the role of trees in human health and heat mitigation



Chicago heat study aims to provide policy solutions for disparities, dangers related to extreme temperatures







1. Chicago Tribune: [Why do some parts of Chicago get hotter than others? Heat Watch program recruits volunteers to map temperatures](#)
2. Chicago Sun Times: [City of Chicago seeks volunteers to track heat and humidity for a national climate study](#)
3. Chicago Fox News 32: [Heat Watch 2023: Volunteers, heat sensors uncover Chicago's hottest spots](#)
4. CDPH Press Release: [Chicago Department of Public Health To Collaborate With Community Partners, Resident Scientists To Map Hottest Places In The City](#)
5. WBEZ Chicago: [City of Chicago seeks volunteers to track heat and humidity for a national climate study](#)
6. WTTW News: [Chicago Has a New Way To Beat the Heat: Mapping the City's Urban Heat Islands](#)
7. Block Club Chicago: [How Do Heat Waves Affect Your Neighborhood? City Wants Volunteers For Study On Climate Change Impact](#)
8. WGN Radio 720: [Chicago to map the hottest places in the city](#)
9. Northwestern Buffett Institute for Global Affairs Press Release: [Northwestern Buffett Global Working Group launches heat-mapping collaboration with City of Chicago](#)
10. Axios Chicago: [1 big thing: Sizzling summer in the city](#)
11. Chicago Fox News 32: [Chicago seeks volunteers to study impact of rising temps, climate change](#)
12. Chicago Sun-Times Op-Ed: [To prepare for extreme heat, let's collaborate and learn from our communities](#)
13. Univision: [Ayuda a medir la temperatura en vecindarios de Chicago y trazar un mapa sobre las áreas más calurosas / Help measure temperatures in Chicago neighborhoods and map over the hottest areas](#)
14. Financial Times: [How heat discrimination divides US cities – right down to the trees](#)
15. Inside Climate News: [New York, LA, Chicago and Houston, the Nation's Four Largest Cities, Are Among Those Hardest Hit by Heat Islands](#)
16. CDPH Press Release: [City of Chicago And Community Partners Announce Heat Watch 2023 Activation Day](#)
17. Chicago Tribune: [Chicago weather: Gusty storms with tornado potential move through area Friday night](#)
18. AccuWeather: [Volunteers mapping the heat effects of 'urban heat islands' in Chicago](#)
19. WBEZ Chicago Reset with Sasha-Ann Simons: [How to stay cool during Chicago's heat wave](#)
20. ABC7 News: [Chicago heat data will help address urban heat islands; July on track to be hottest month on record](#)
21. CBS2 News: [Another day of dangerous heat and humidity; Friday may be hottest of 2023 so far](#)
22. CBS2 News: [Researchers measure how some Chicago neighborhoods are more vulnerable to heat](#)
23. The Tribe: [Are all Chicago residents equipped to handle the summer heat?](#)
24. WBEZ Chicago Reset with Sasha-Ann Simons: [Meet the citizen scientists mapping Chicago's heat inequities](#)
25. WBUR NPR Here & Now: [As cities sizzle, mapping projects pinpoint the perils of hot neighborhoods](#)
26. ABC7 News: [Cook County summers expected to get even hotter by 2050, according to ABC7 heat analysis](#)
27. The Daily Line: [Chicago heat study aims to provide policy solutions for disparities, dangers related to extreme temperatures](#)
28. WTTW Chicago Tonight: Black Voices: [How Extreme Heat Impacted Chicago's Black Communities](#)
29. Chicago Health Magazine: [Oh, Nature! Chicago explores the role of trees in human health and heat mitigation](#)
30. Austin Weekly News: [Heat, pollution take toll on West Side residents health, report shows](#)



Next Steps



Heat Watch data provides new and valuable descriptions of how heat can be distributed across Chicago neighborhoods. With these new datasets in-hand, there are several short- and long-term next steps with partners from residents, community based organizations, non-profits, Northwestern University's Roberta Buffett Institute for Global Affairs' Defusing Disasters Working Group together with the Chicago Department of Public Health, the Department of Environment and other City departments and agencies will follow to build upon this work. We will be validating the information with local stakeholders, generating interpretations and meanings through further analysis, and/or employing the data across a myriad of applications for heat mitigation and heat preparedness.

Consider [studying this map](#) first to see how different communities and sectors are affected by these results. The collaboration between partners and community volunteers who planned and conducted this campaign will also serve as a strong network for future efforts on heat.

Using more technical methods, we will investigate relationships between heat and the built environment using land use, canopy cover and impervious surface data; assess social vulnerability factors like age, health, and income; and investigate impacts in specific sectors such as housing. Heat Watch data may guide us to identify as well as to help confirm more priority areas for equitable tree planting in [Our Roots Chicago](#), an initiative to plant 75,000 parkway trees by 2026, This data may also help identify where resilience hubs could be located in high-need areas, or understanding how much heat is present along railyards, industrial corridors, public transportation routes, and schools.

These new datasets have also prompted and supported further research needs into the intersection of heat with overlapping natural hazards like air quality as well as the indoor experience of residents during heat waves, and future projections of heat based on models of emissions levels and climate change. We know that increased temperatures will also lead to increased energy use and grid vulnerability. In fact, nearly all sectors of urban life are likely to be affected by rising temperatures and at inequitable rates of impact to our cities' populations.



Next Steps



A key need for the development of a Heat Action Plan is the identification of residents that are particularly vulnerable to extreme heat. A Heat Vulnerability Index (HVI) is one such tool that cities often develop to help assist with this task. HVIs use exposure, susceptibility, and adaptive capacity data to map city-wide heat vulnerabilities. To develop an HVI for Chicago, the city recently launched a partnership with the [Defusing Disasters Global Working Group \(DD\)](#) - a multidisciplinary collaborative established and supported by [Northwestern University's Roberta Buffett Institute for Global Affairs](#). DD also helped fund a portion of Heat Watch, ensuring all 77 community areas were mapped and provided the stipends to all the volunteers that made Heat Watch possible.

The group includes local university researchers with expertise in a broad range of disciplines, from emergency medicine and disaster management to Earth and environmental sciences, as well as leaders of government agencies like the Chicago Department of Public Health and the Chicago Department of Environment. In addition to Northwestern University researchers, experts from a host of institutions have joined the effort, including the University of Illinois Chicago, University of Chicago, Rush University, Illinois Institute of Technology, and Argonne and Pacific Northwest National Labs.

To ensure that these extreme heat preparedness efforts are inclusive and consider the needs of all Chicago communities, DD partially funded the Heat Watch campaign to ensure that the temperature and relative humidity measurements had city-wide coverage. With Heat Watch heat exposure data now in hand, DD will begin the process of formalizing a community-based participatory research project to create Chicago's HVI. This effort involves engaging with culturally, ethnically, politically, and socially diverse community stakeholders in the process of problem solving and knowledge co-creation. Through this collaborative work, public health officials, health systems, and emergency management teams will gain foreknowledge of those within their communities that are most vulnerable to extreme heat, thereby laying the foundation for the development of more effective, potentially life-saving mitigation strategies.

A significant longer-term application of Heat Watch results and the HVI is to add to existing plans to address the many physical, social and economic threats of extreme heat facing our communities. Developing a "Heat Action Plan" is essential for situating heat data within current conditions and stakeholder interests, defining local risk to extreme heat, and assembling actionable and place-based intervention strategies.

Visit chicago.gov/CoolChi to stay up-to-date on events and activities and email coolchi@cityofchicago.org to learn more on how to get involved in the next steps.



CAPA
strategies



HEAT WATCH

Frequently Asked Questions (FAQ)

A. Data and Access

A1. How can I access the data from Heat Watch?

All Heat Watch data (traverses, models and metadata) are available on the Open Science Framework (OSF). When first delivered to campaign leaders, the OSF page is provided as a view-only link; once the results are approved by the local team, CAPA will update the OSF page to be publicly accessible. All Heat Watch data, this summary report, and metadata will then be available for download and use by the public.

A2. In what format are the data provided?

The traverse point data from each time period (morning, afternoon and evening) are provided as vector shapefiles. The models from each time period are provided as geo-tiff rasters at 10-meter resolution. In order to view and manipulate these data, GIS software is needed.

A3. What is the accuracy of the traverse point temperature measurements?

The Heat Watch sensor includes a temperature probe that is accurate to $\pm 0.5^{\circ}\text{C}$. The response time (the amount of time it takes for the sensor to accurately measure a change in temperature) is 1 second.

B. Relative Humidity and Heat Index

B1. Where are the relative humidity and heat index results, and why are only the temperature results displayed in this report?

The relative humidity measurements and heat index calculations are provided in the traverse shapefiles for each time period; heat index models are provided with the rasters. We focus on temperature data in the report because it is the most plainly understood variable and based more on direct measurements of the environment. Temperature then provides the basis for incorporating relative humidity to calculate heat index.

B2. What is the accuracy of the relative humidity measurements?

The accuracy of the relative humidity sensor is $\pm 3\%$.

Frequently Asked Questions (FAQ)

B3. What is heat index and how is it calculated?

Heat index is an approximation of the heat felt when the presence of humidity is felt in combination with temperature. We calculate heat index by combining the measured traverse point temperature with its corresponding relative humidity measurement using the same equations as advised by the National Weather Service. Note that there are multiple ways of calculating heat index at various thresholds. To learn more, visit <https://www.weather.gov/safety/heat-index>.

B4. Where can the relative humidity and heat index data be accessed?

All results are available through OSF, and the relative humidity and heat index data can be viewed and manipulated using GIS software.

C. Maps and Visualization

C1. How can I visualize the data and make maps similar to the report?

You can extract and print any map from this pdf report to use in media and other products. If you wish to visualize the data in similar style (colors, breaks, etc.) using a GIS tool, please see the CAPA Heat Watch Style Guide.

C2. Why do the maps show the temperature range of just that period (e.g. morning minimum temperature to morning maximum temperature), instead of the entire day (i.e. overall minimum to overall maximum)? Wouldn't this allow better visualization of how heat shifts throughout the day?

The temperature range of each time period is used in order to emphasize the distribution of heat within that specific time period. While the data can be visualized differently with the range from the entire day, the differences across the area then become much less apparent in the maps.

C3. Why are the ranges between traverses and models slightly different?

You may notice that for instance the maximum temperature in a traverse point dataset is 94.1°F, whereas the maximum temperature from its corresponding area-wide model is 94.5°F. The reason for this slight discrepancy is inherent to predictive modeling - all models introduce some degree of uncertainty and error. The best-fit model consists of many input variables that may produce a slightly higher or lower prediction of temperatures than measured by the traverses.